

Table of Content

Booklet 1 of 3: Master Plan Design Principles and Ideas

Booklet 2 of 3: Villa Design Ideas and Types

Booklet 3 of 3: Mixed Use Building Design Ideas and Drawings

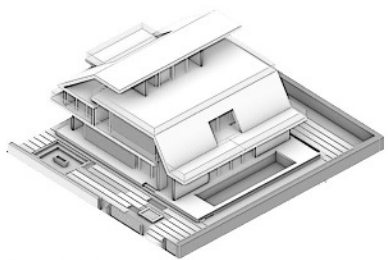
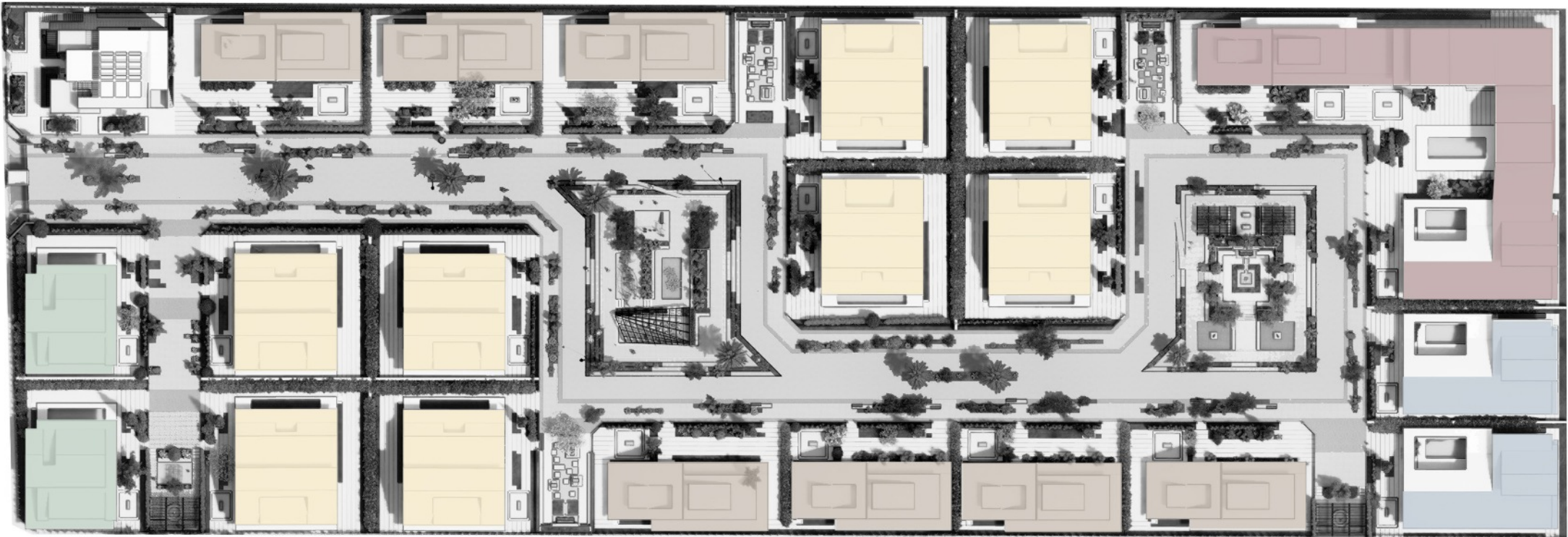
بدلیل محدودیت حجم در آپلود فایل، سه دفترچه فوق در قالب سه فایل پی دی اف مجزا بارگذاری شده است

Booklet 2 of 3:

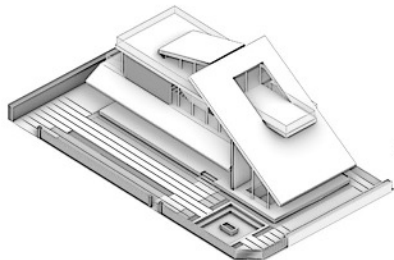
Villa Design Ideas and Types

با توجه به نکات مطرح شده در جلسه کرکسیون، موارد زیر در طراحی ویلاها لحاظ شدند:

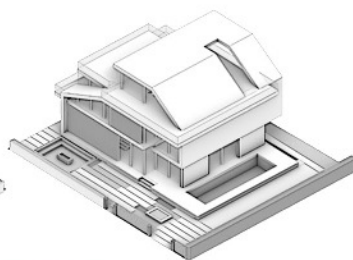
- تمامی ویلاها مورد بازطراحی قرار گرفتند.
- استفاده از الگوهای بومی منطقه با بیانی مدرن و انعکاس روح و اتمسفر فضایی مناطق شمالی ایران در طرح ویلاها
- طراحی ویلاها به نحوی صورت گرفت که ضمن آن که نماهای اصلی آن ها به سمت معابر است، تهویه طبیعی هوا در آن به خوبی صورت پذیرد.
- بهره گیری از ویژگی های اقلیمی منطقه به نحو مطلوب



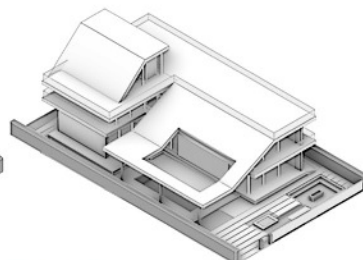
Type A



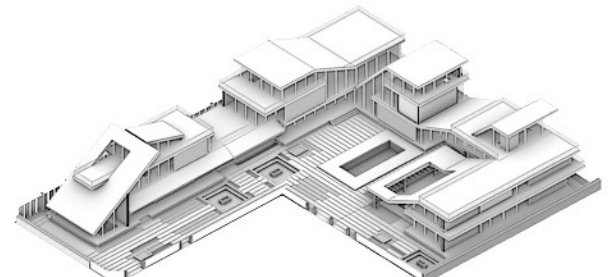
Type B



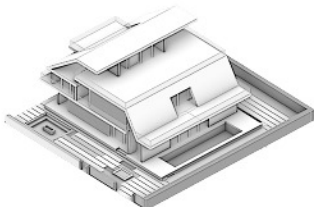
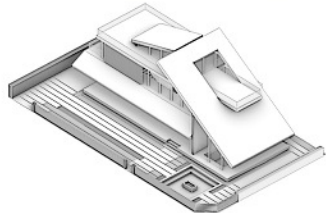
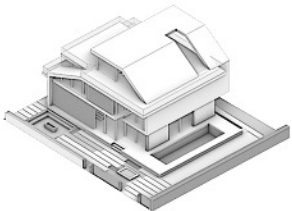
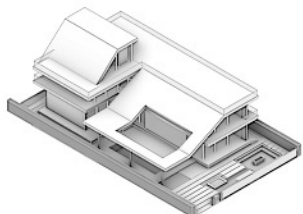
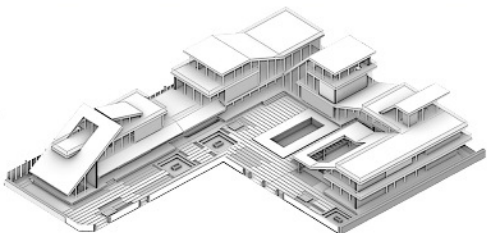
Type C



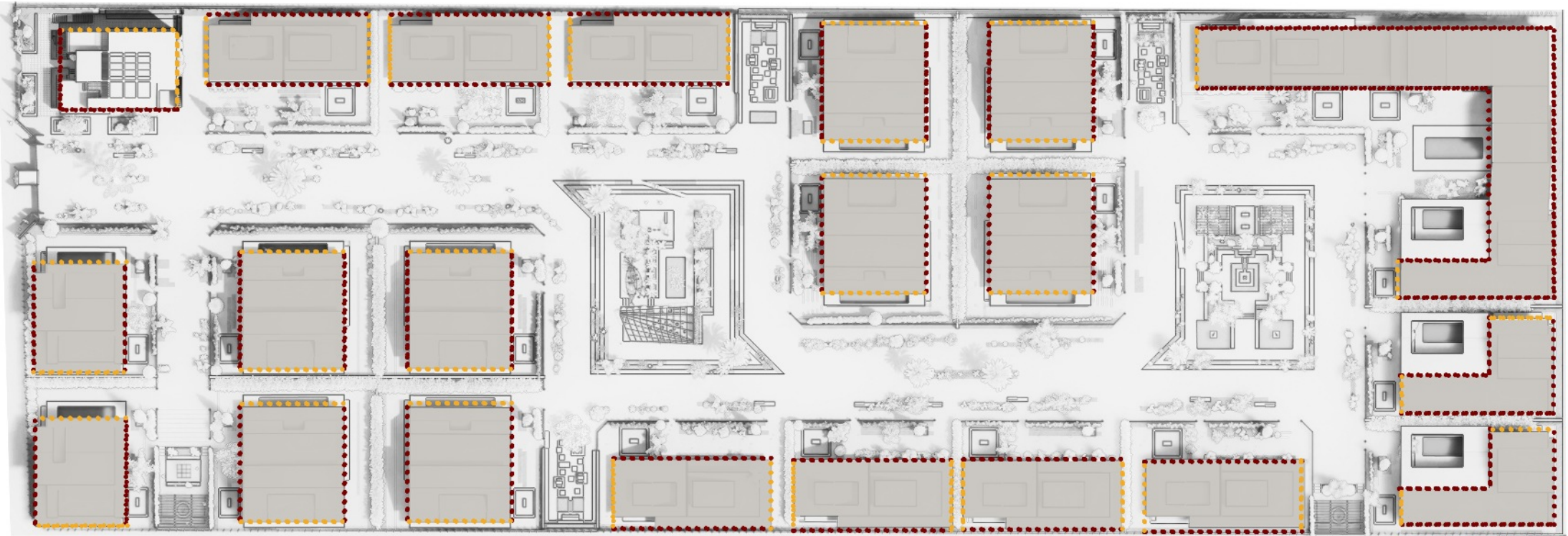
Type D



Type E

		Total Number of This Type	Footprint (Square Meter)	The Number of Floors above Ground	The Number of Underground Floors	Total Floors Area (Square Meter)
Type A		8	315	2	1	720
Type B		7	230	2	1	550
Type C		2	245	2	1	580
Type D		2	260	2	1	610
Type E		1	1100	2	1	2500

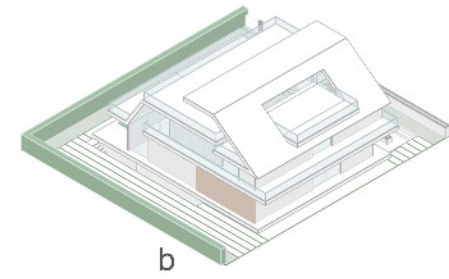
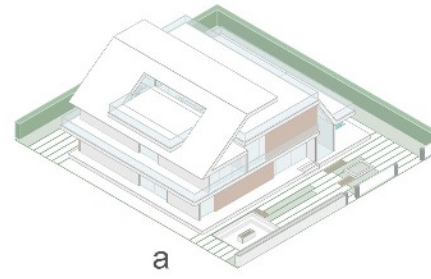
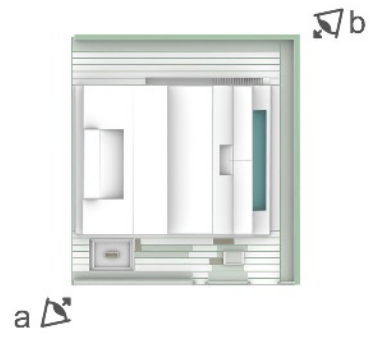
Design Idea: all-side view villas



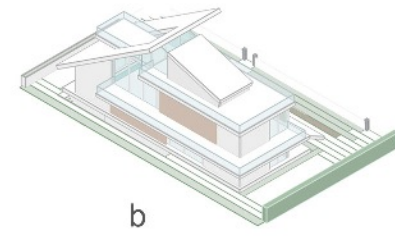
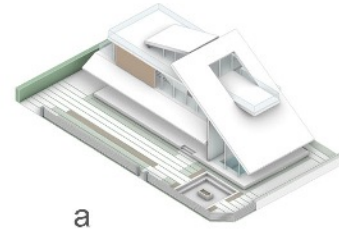
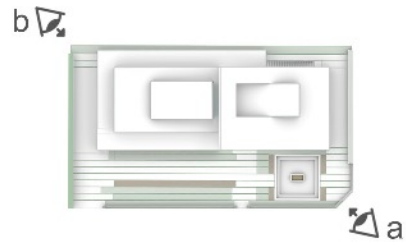
Main Facades

Secondary Facades

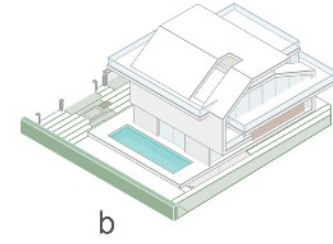
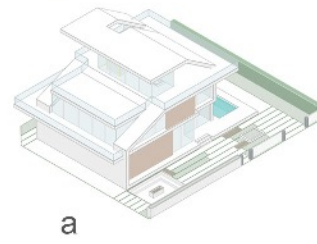
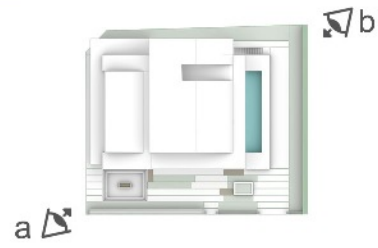
Type A



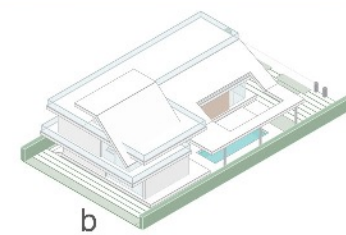
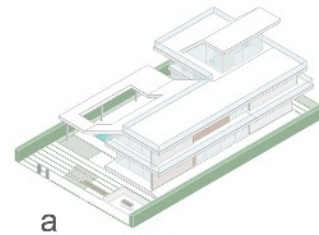
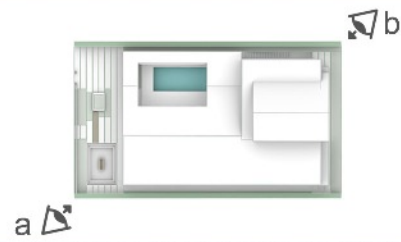
Type B



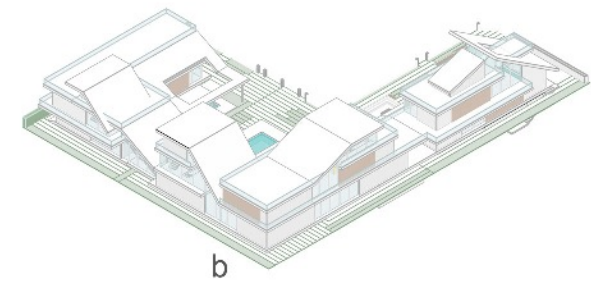
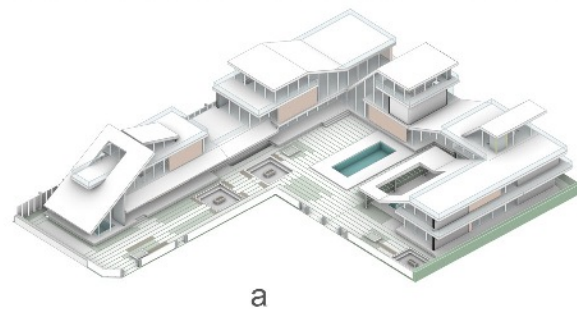
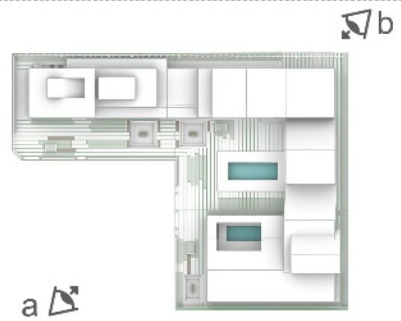
Type C



Type D



Type E



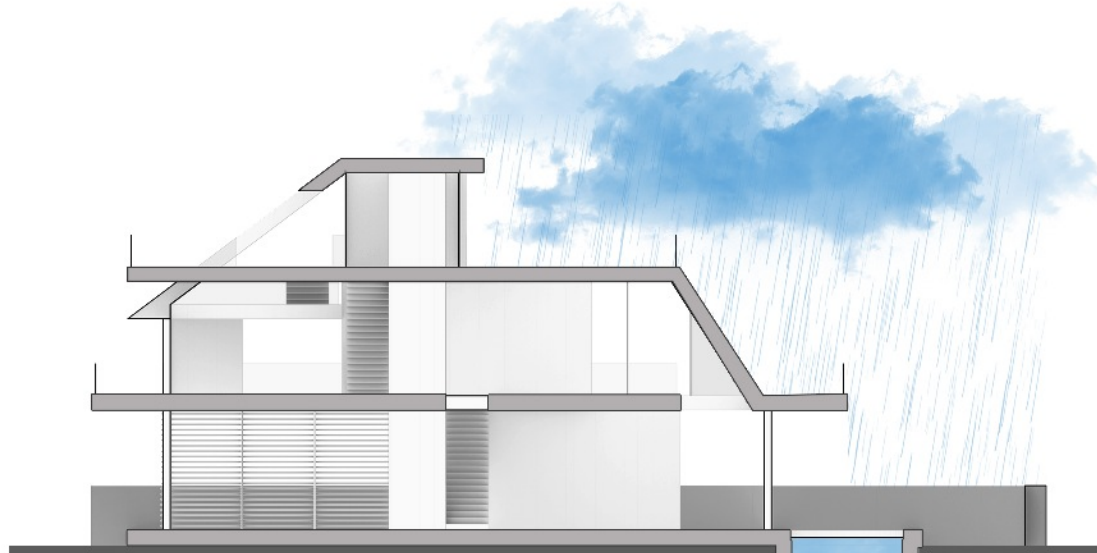
Design Idea: Inspired by Local Architecture

- In close connection with natural environment.
- Using Sloped Roof because of the intense rain
- Terrace as an interface element between outside and inside
- Locating windows in direction with prevailing winds (N to S)
- Having all sides views
- Using architectural elements that allow visual continuity such as green and wooden fences, textured wooden fences and ...

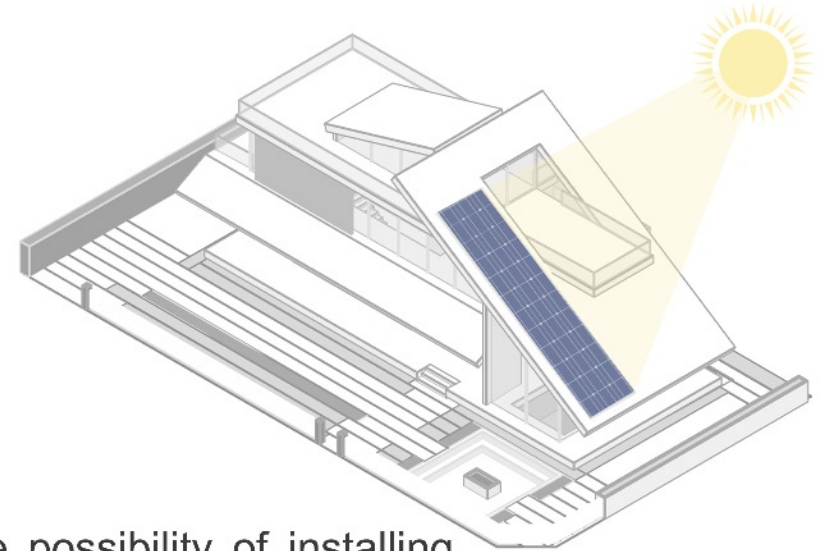
- در ارتباط نزدیک با طبیعت
- استفاده از سقف شیبدار با در نظر گرفتن شرایط اقلیمی
- تراس های سرتاسری به عنوان مرز میان داخل و خارج
- جانمایی بازشوها در جهت بادهای غالب
- داشتن ۴ نما جهت حداکثر بهره گیری از نور، تهویه طبیعی و منظر
- استفاده از عناصر معماری که امکان تداوم دید را در محوطه فراهم می کند، همچون پرچین های گیاهی و چوبی، نرده های چوبی



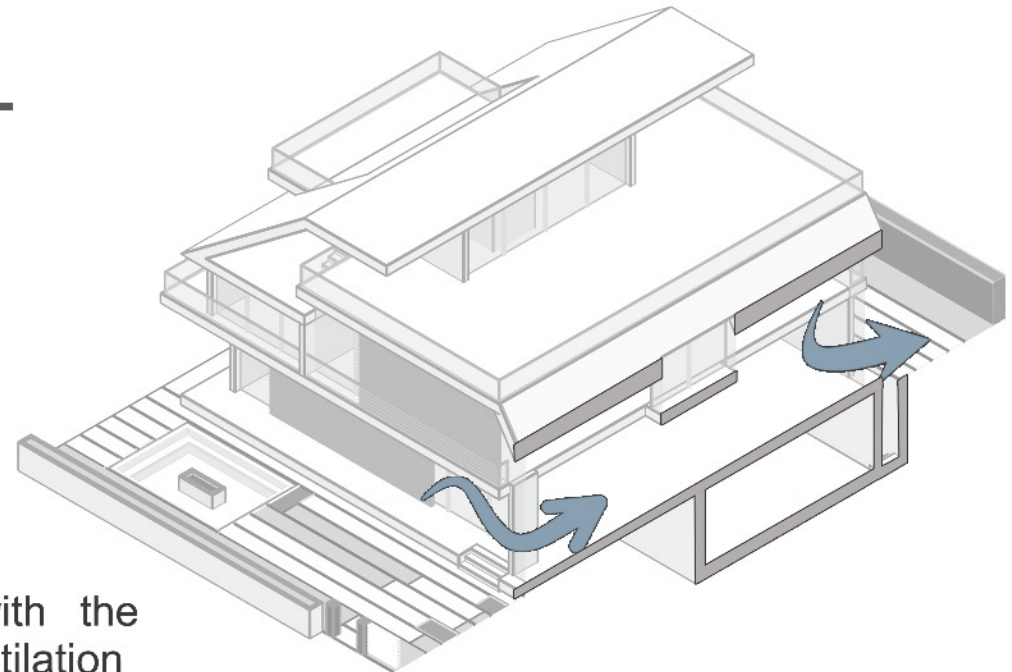
Design Idea: adoptability with climate features



The use of sloping roofs and protruded terraces to deal with heavy rains



The possibility of installing solar cells on sloping roofs

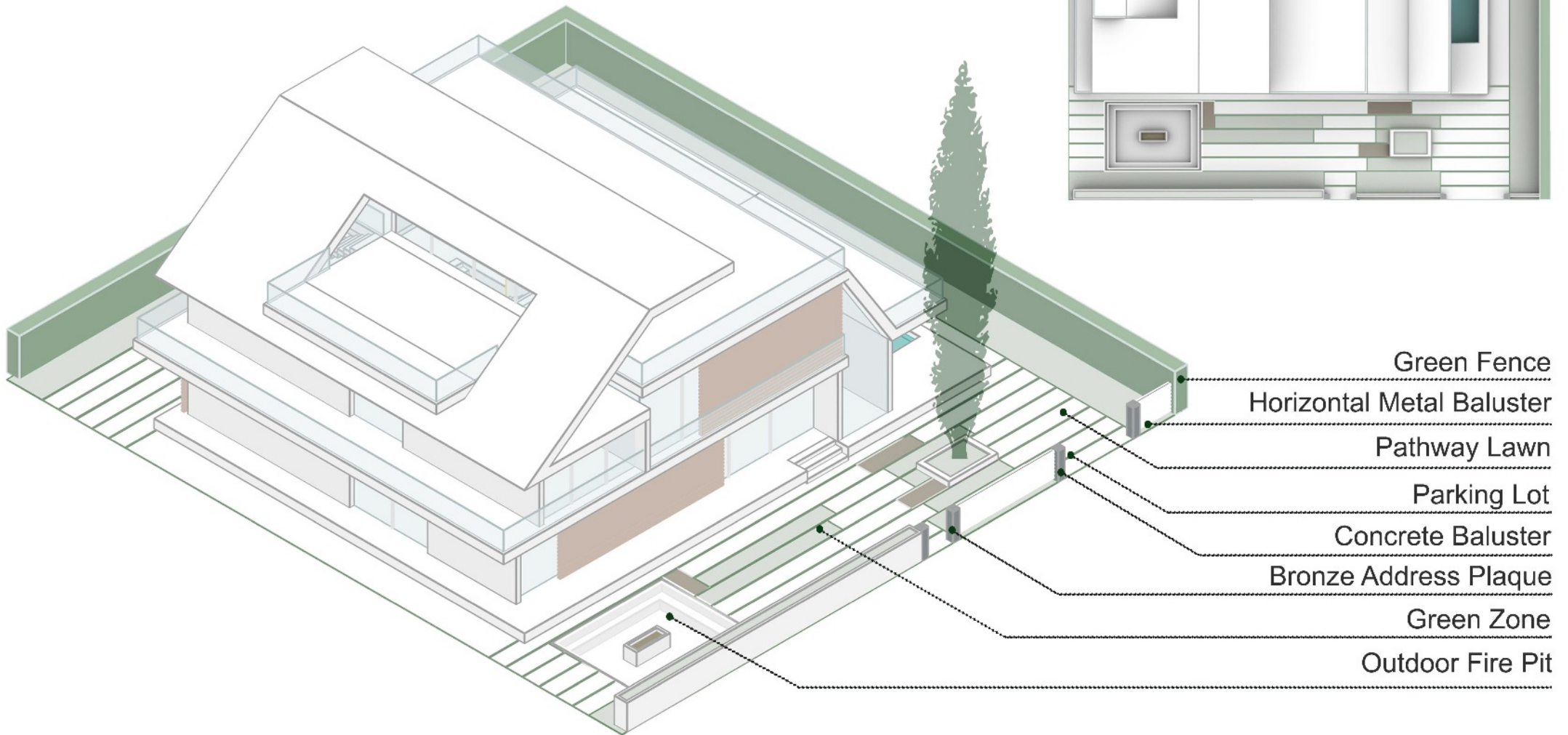


The location of windows along with the prevailing wind, facilitating natural ventilation

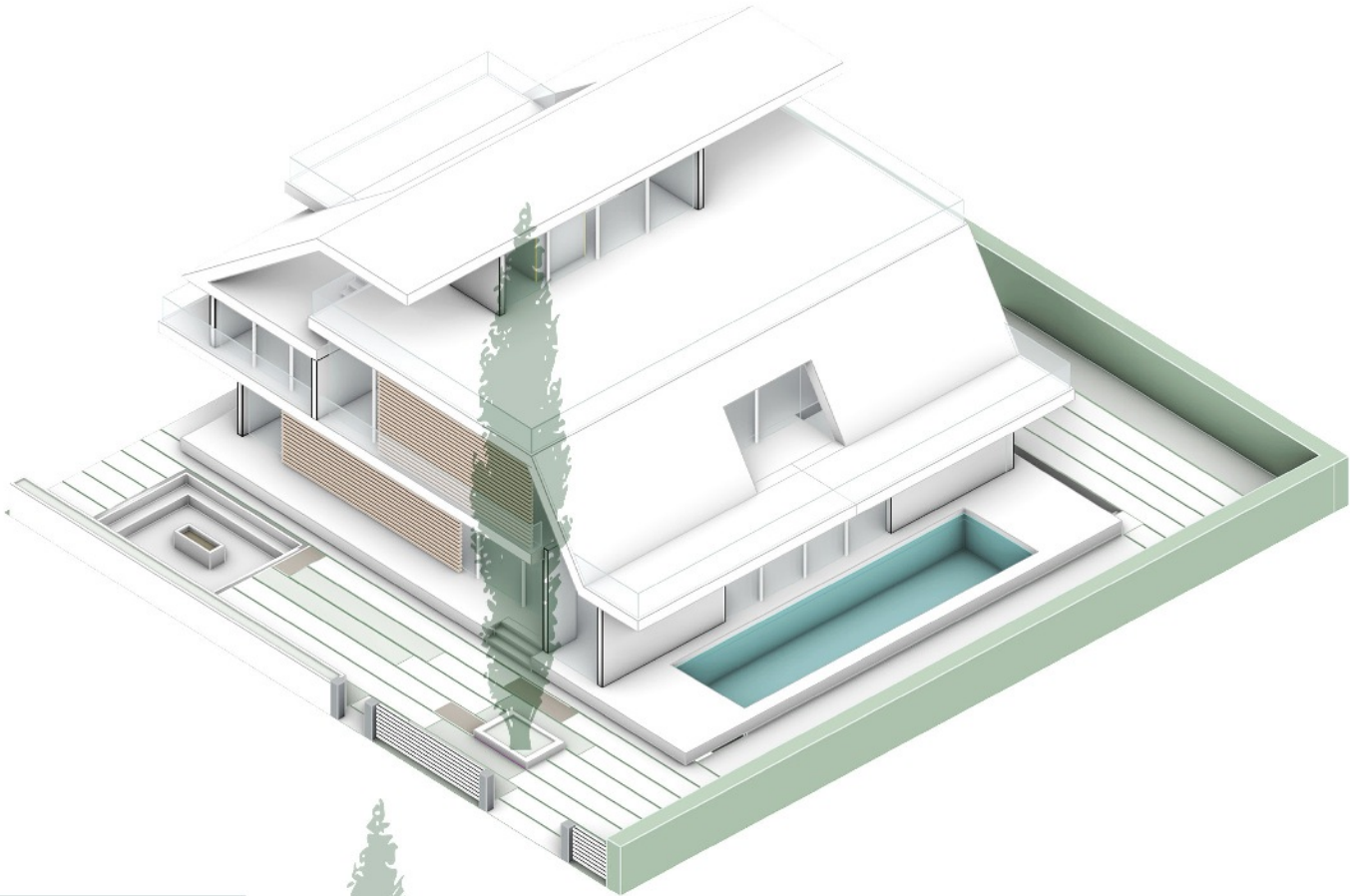


Villa A

Type A



Type A



+10.98

+7.92

+6.84

+4.32

+0.54

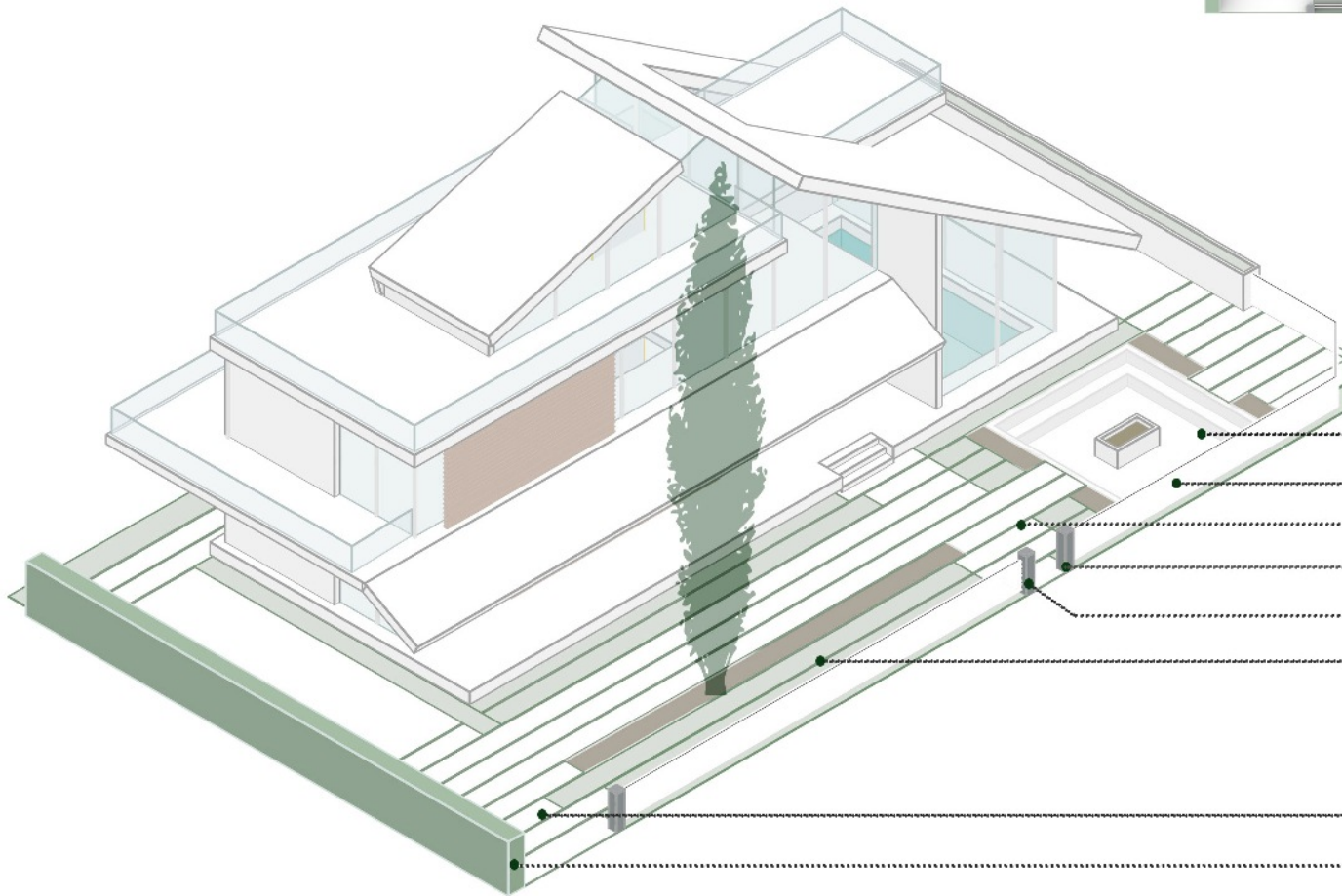
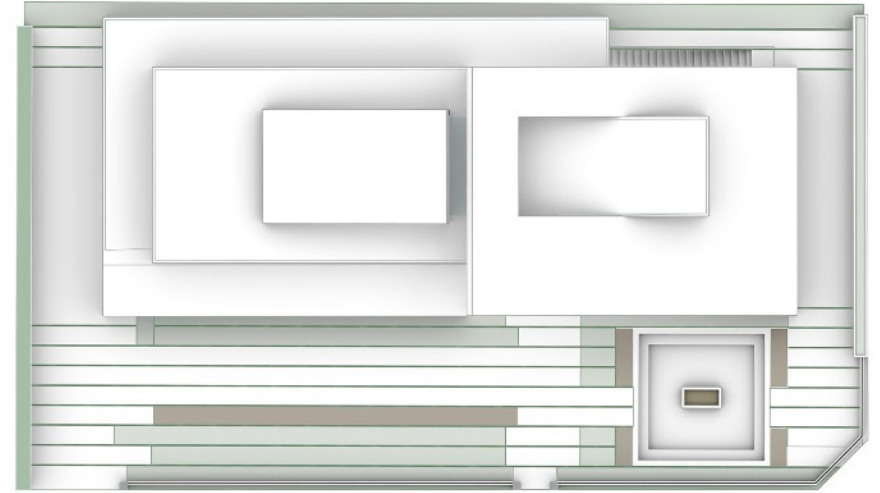
±0.00





Villa B

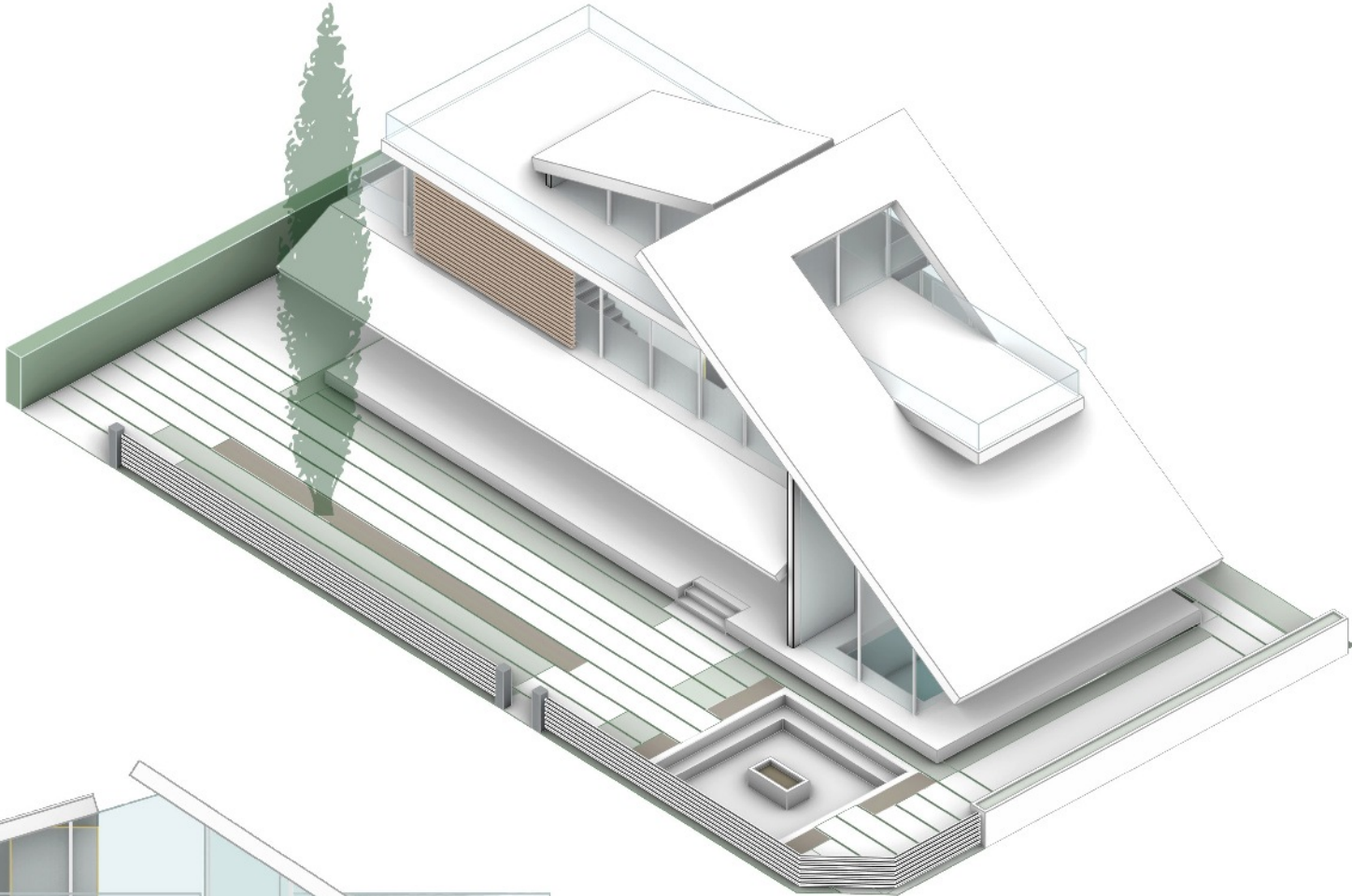
Type B



- Outdoor Fire Pit
- Horizontal Metal Baluster
- Pathway Lawn
- Bronze Address Plaque
- Concrete Baluster
- Green Zone

- Parking Lot
- Green Fence

Type B



+10.98

+7.38

+4.14

+0.54

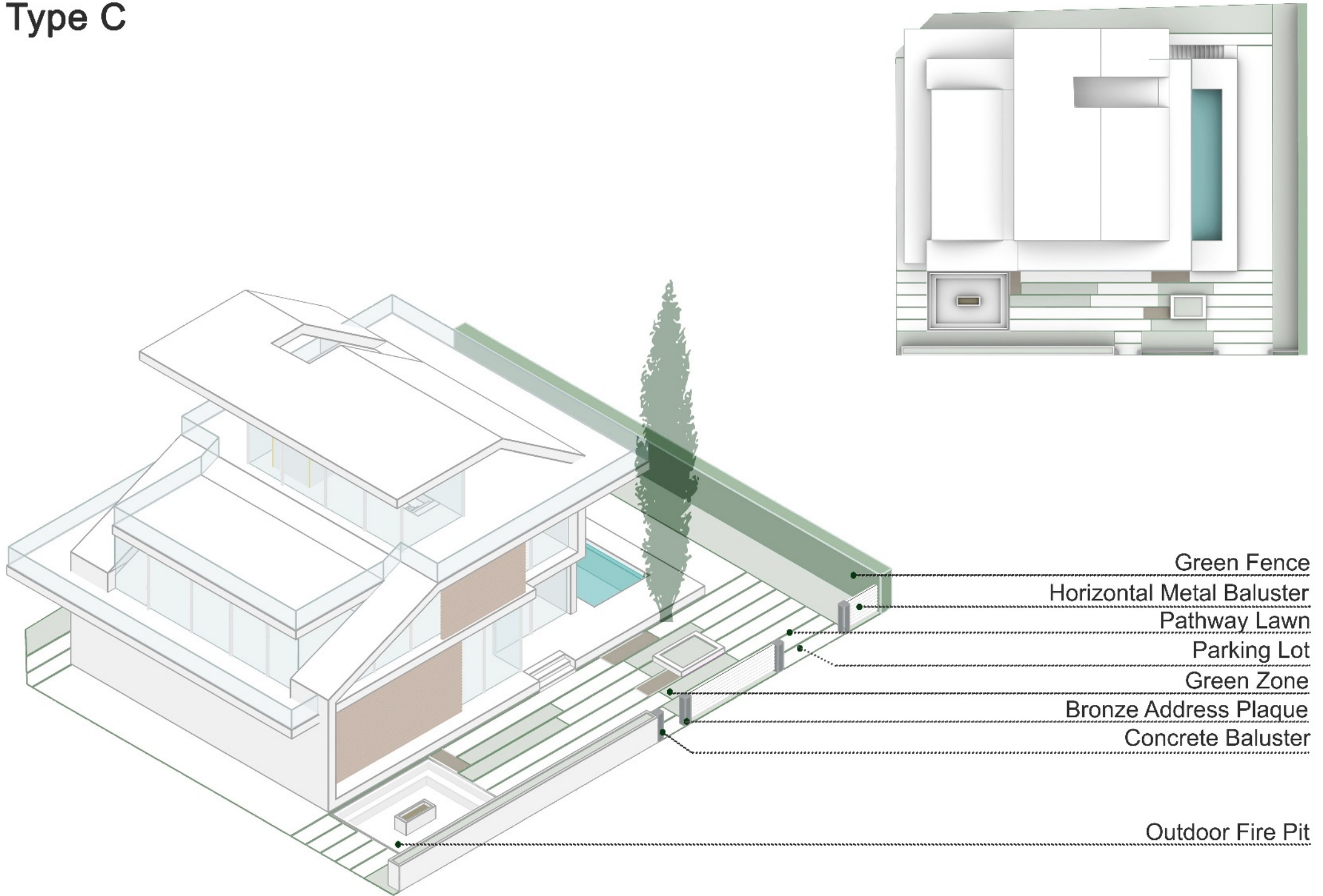
±0.00



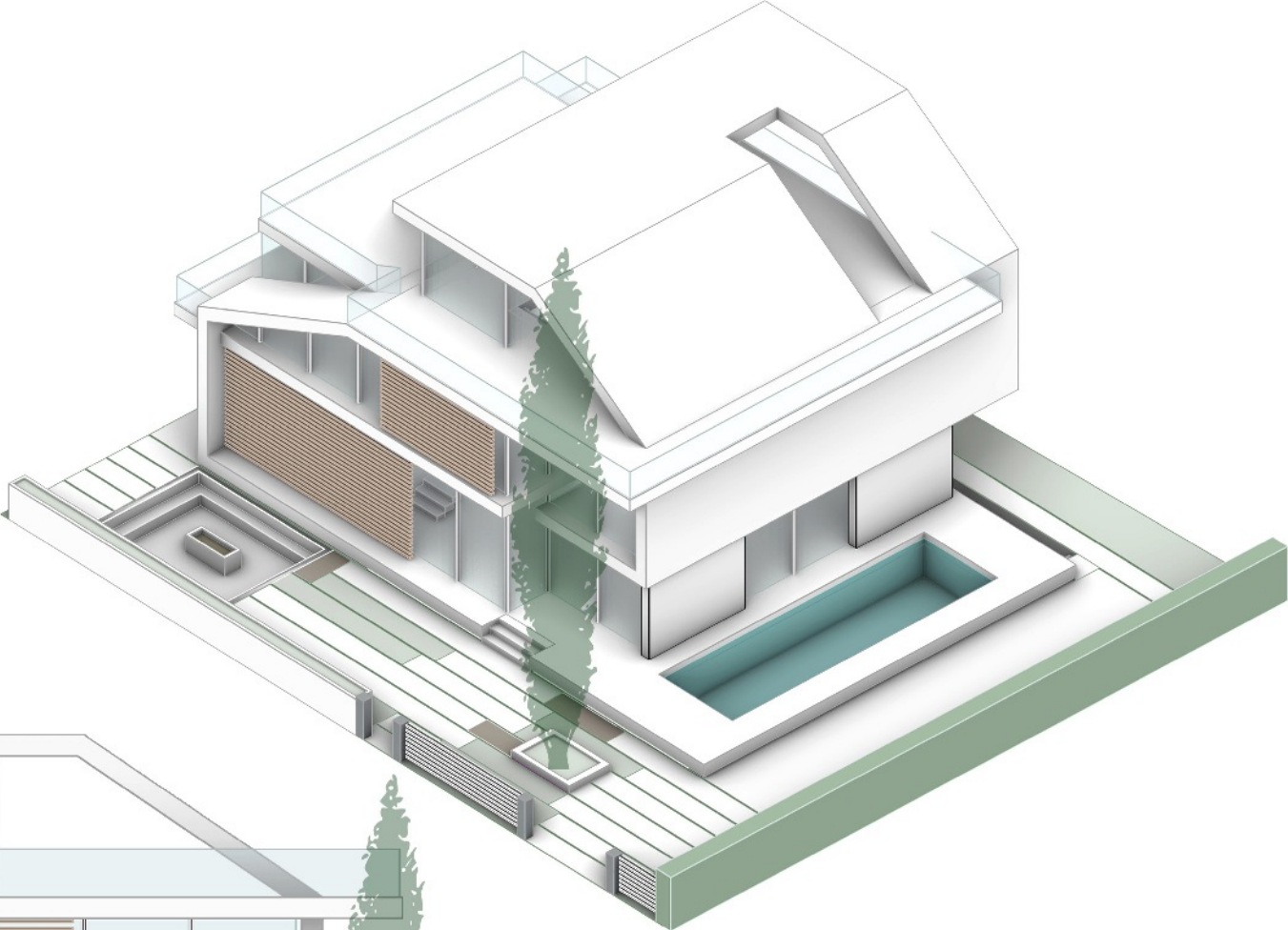


Villa C

Type C



Type C



+10.98

+7.92

+4.50

+3.60

+0.54

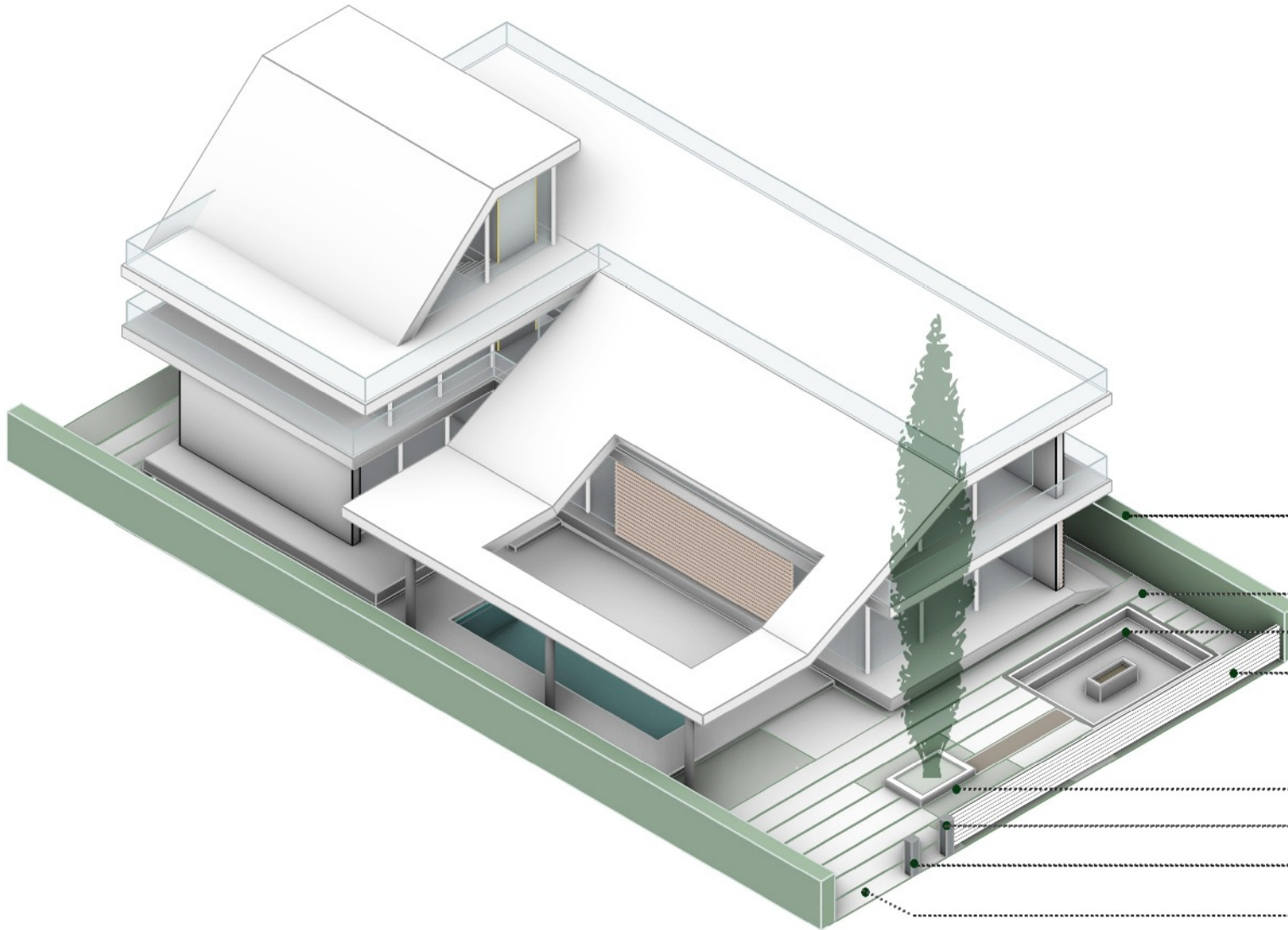
+0.00





Villa D

Type D



Green Fence

Pathway Lawn

Outdoor Fire Pit

Horizontal Metal Baluster

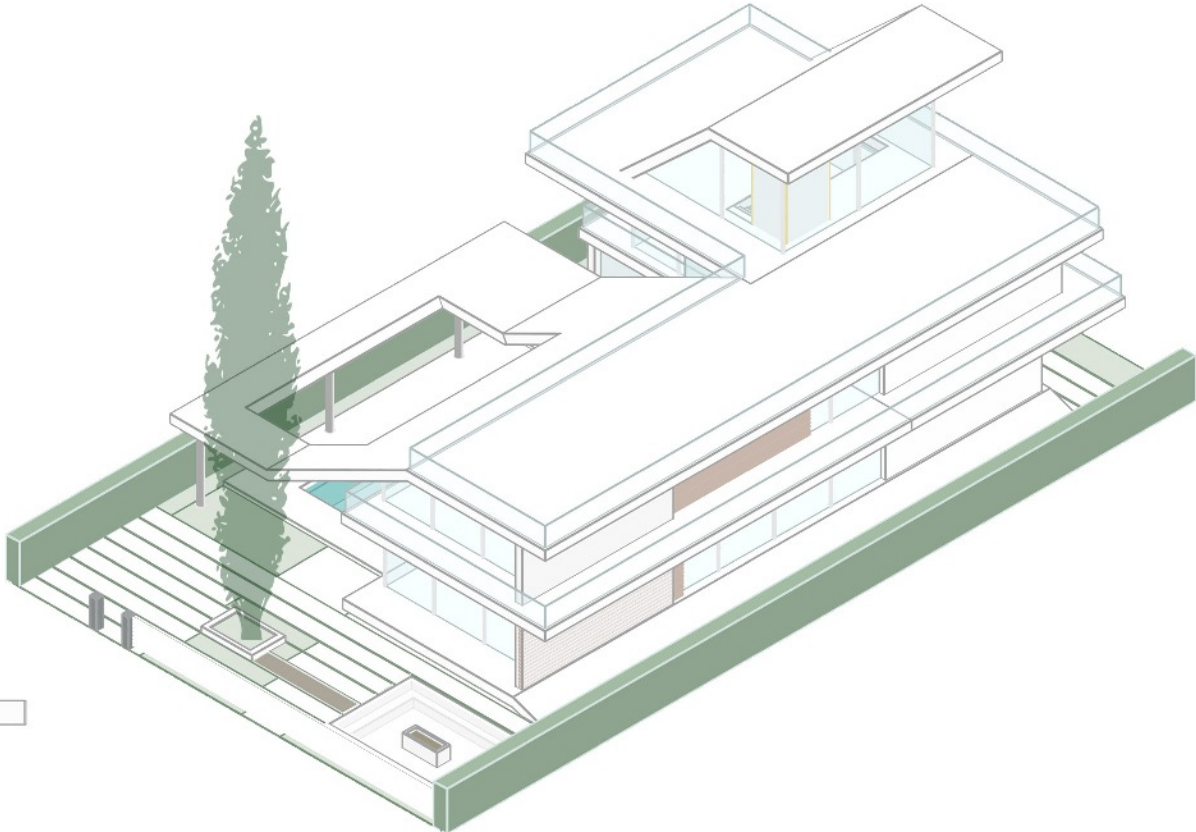
Green Zone

Bronze Address Plaque

Concrete Baluster

Parking Lot

Type D



+10.98

+7.38

+4.14

+0.72

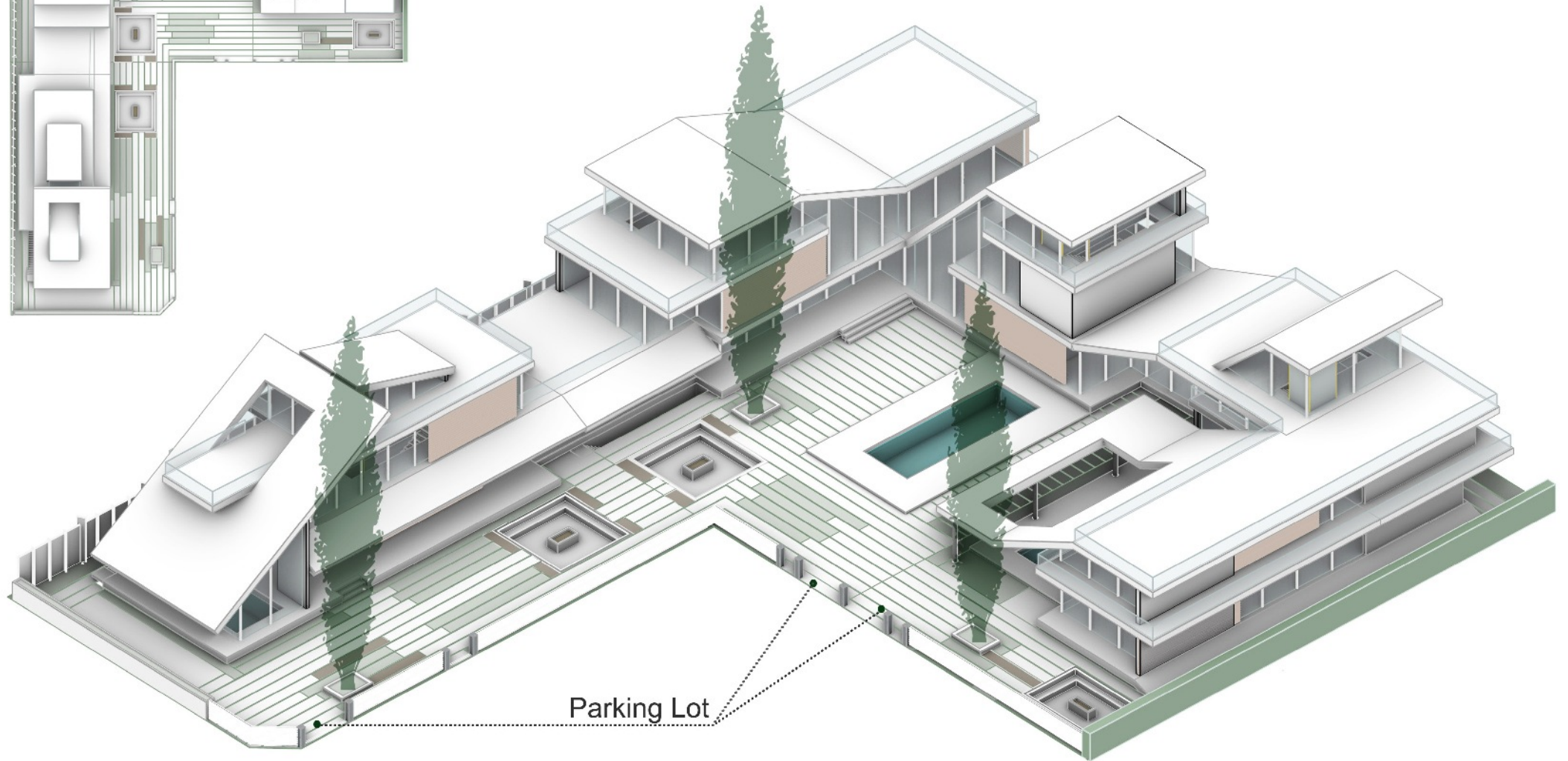
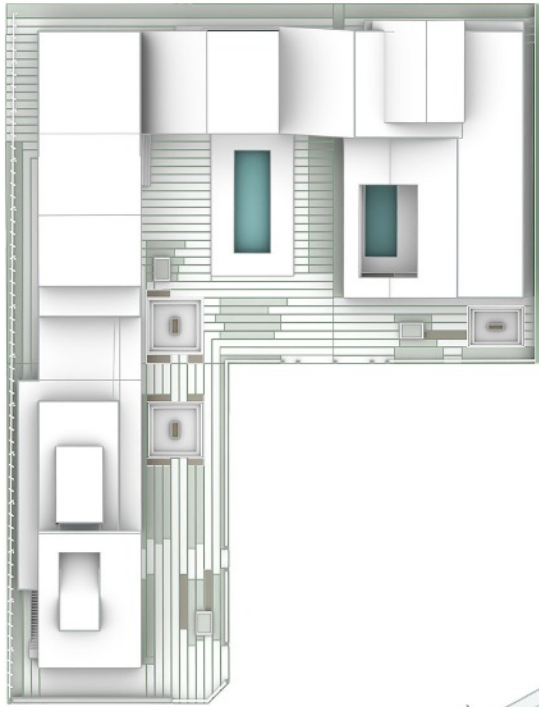
+0.00





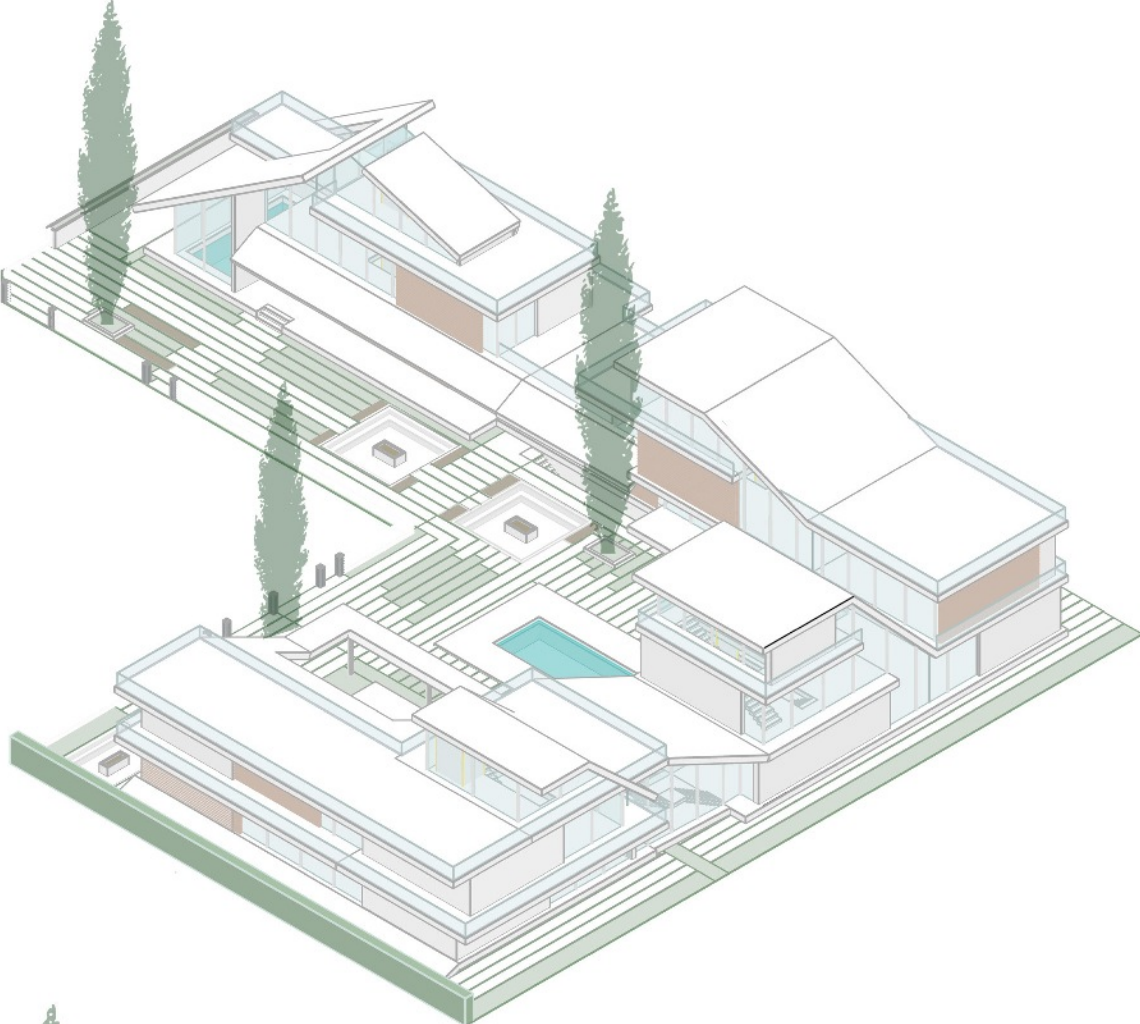
Villa E

Type E

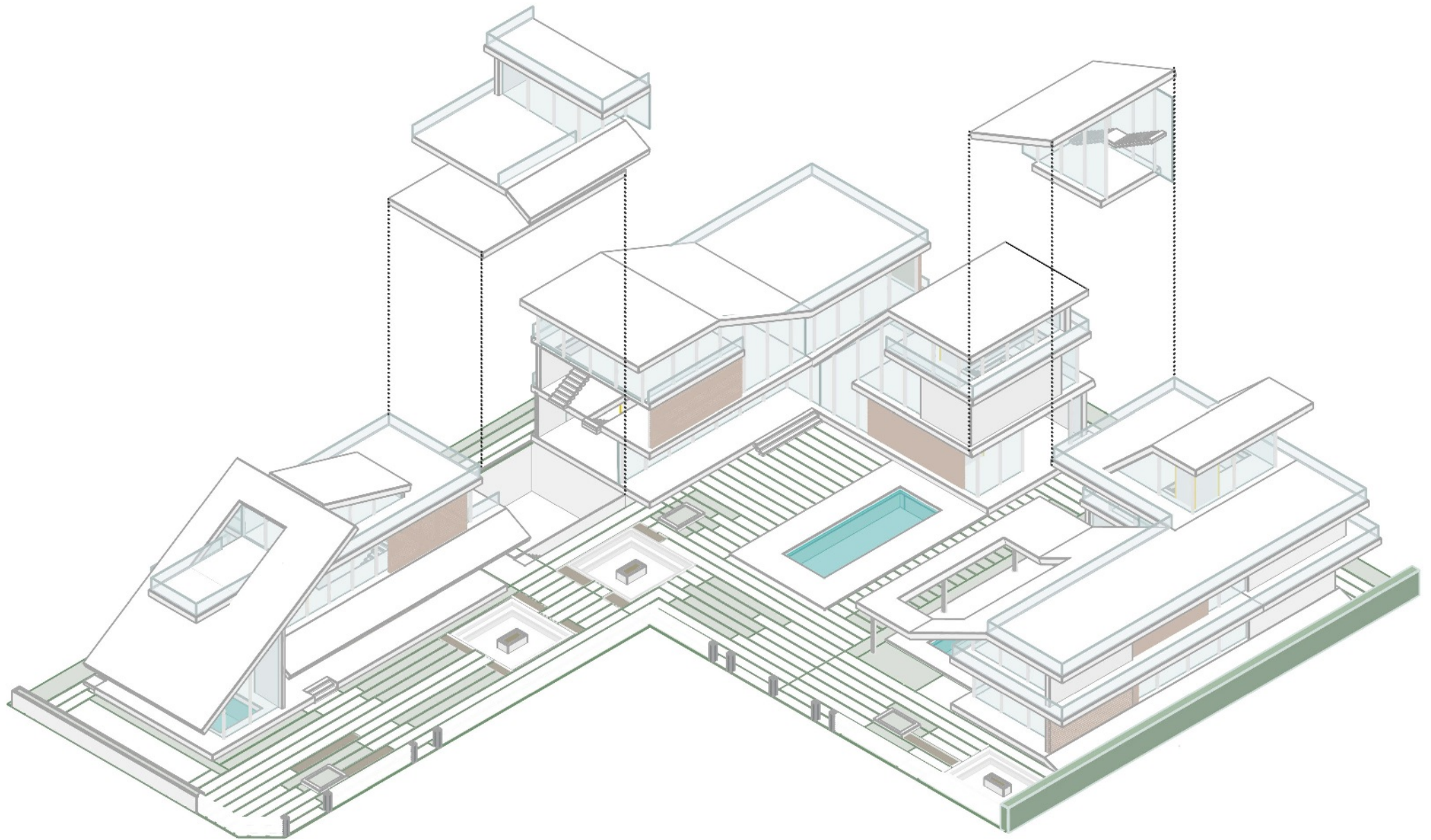




Type E



Type E



Proposed joints for Probable Connections Between the Villas Designed in Part 9, 10 & 11