

مجموعه مسکونی تنیا توان

گزارش اولیه طراحی شماتیک معماری

تاریخ: 02 / 02 / 16
کارفرما: تنیا کو . گروه طرح تو طرح مشاور: صدف علیخانی . مهدی فرقانی



- Case Study

- Site Analysis

- Design Proposal



Master Plan



Commercial building



Entrance

— **Case study**

Yujidao

General Information

Type : Landscape Design

Location : Nanchong ,China

Completed : 2021

Architect : BLVD International

Facilities : Park,Camping area ,Bicycle line ,walkpath

Area : 1000000 m²



Yujidao Park: Nanbu County, Nanchong is known as the "Second City of Chengdu-Chongqing Circle" in Sichuan."A history of the south, the love of water through the ages", for thousands of years, the water of the Jialing River has been rushing here, nourishing everything, and the people of northern Sichuan have thrived here and compose a glorious chapter. In the principle of respecting nature and advancing into the future, the design puts forward the concept of "Jialing Pearl, Brilliant Riverside". It introduces the Jialing River water into the site to create Nanbu Shuicheng where the city is on the water and the water is in the city, creating a closer and intuitive experience for people's water activities.

AREA :1000000 m²

PROGRAMS: Park ,Garden

Yujidao Landscape



Cradle Mountain Gateway

General Information

Type : Publicspace

Location : Cradle Mountain ,Australia

Completed : 2020

Architect : Cumulus Studio

Facilities : Park,Urbanscape



Cradle Gateway: Cradle Mountain Visitor Centre is a building of contrasts. It's imposing but harmonious. It's an abstract interpretation of nature. And it's modern with a rightness unrooted in time. Most surprising of all, perhaps, is how the raw exterior unwinds into a warm, soft, delicate timber lining.

PROGRAMS: Publicspace

Cradle Mountain Gateway

Landscape



Cradle Mountain Gateway

Landscape



Cradle Mountain Gateway

Landscape



Mason

General Information

Type : Resort suite

Location : Pattaya, Thailand

Completed : 2019

Architect : VaSLab Architecture

Facilities : Water sports facilities ,pool,restaurant, spa, garden,beach

Area : 9039 m²

Capacity : 35 suites

7Pines kempisik : Inspired by its local craftsmanship of stone masonry, Ang Sila community, concrete and stone has been carefully cut and crafted, forming a unique architectural design. Mason may well include having a positive impact on its context. A dying breed, the stonemasons of Ang Sila need projects like this if their craft is to stand a chance of survival. As a matter of fact, their generation may well be the last. Thus, the collaboration between the project owner, the architect and the local artisans makes Mason not only a retreat resort, but the architecture that helps local people and their community to have the new opportunities in their lives and careers.



AREA :9039 m2

CAPACITY: 35 suites

PROGRAMS: Resort

Mason
Residential Complex



Mason Residential Complex



Mason Residential Complex



X2 Oceanphere Villa

General Information

Type : Residential

Location : Pattaya ,Thailand

Completed : 2019

Architect : Creative Crews

Facilities : Accomodation

Area : 18000 m²

Capacity : 47 Villas



X2 Oceanphere : The X2 Pattaya Oceanphere is a villa resort situated in Pattaya, a well-developed beach town with cliché tourist destinations, hotels, and resorts chains. The site is located on the eastern seaboard of Thailand, facing the Gulf of Thailand where there are long stretches of beaches without much dramatic rocky or cliff terrain. The architectural language of the villa resort is derived from the aim to create man-made landscape with available materials and efficient construction methods.

AREA :18000m2

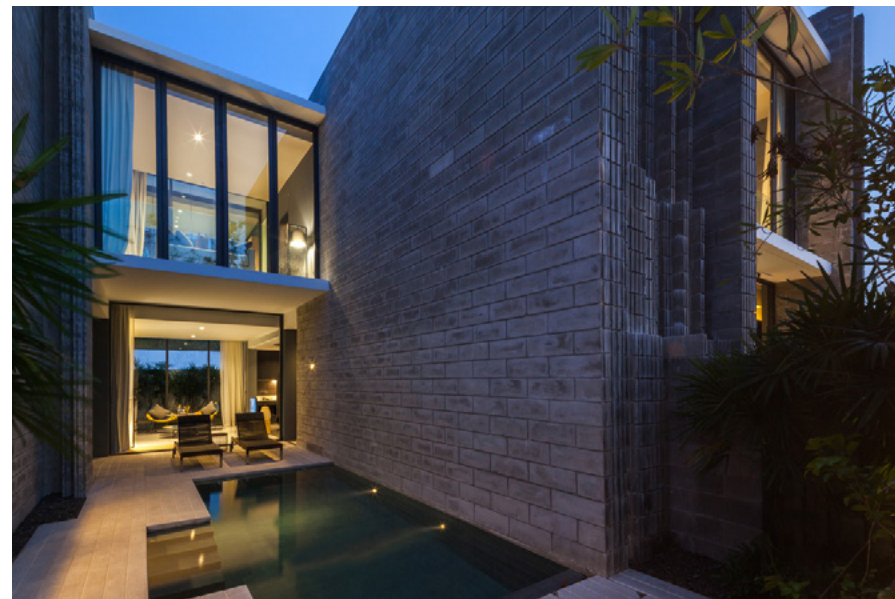
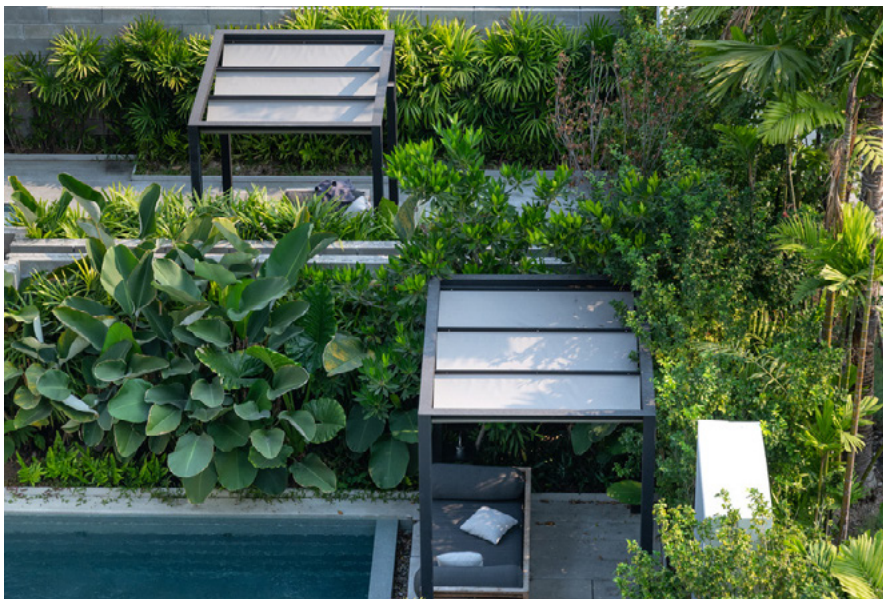
CAPACITY:47 Villas

PROGRAMS: Residentail

X2 Oceanphere Villa Residential Complex



X2 Oceanphere Villa Residential Complex



Site Analysis

Site Location

General Information

Distance From Tehran 

3Hours and 30 minutes ||| ||| Haraz road

4Hous and 25 minutes from Chalus Road

Distance From other cities

Namakabrud 7km

Motel QU 8 km

Chalus 20 km

Abbassabad 18.5 km



Site Location

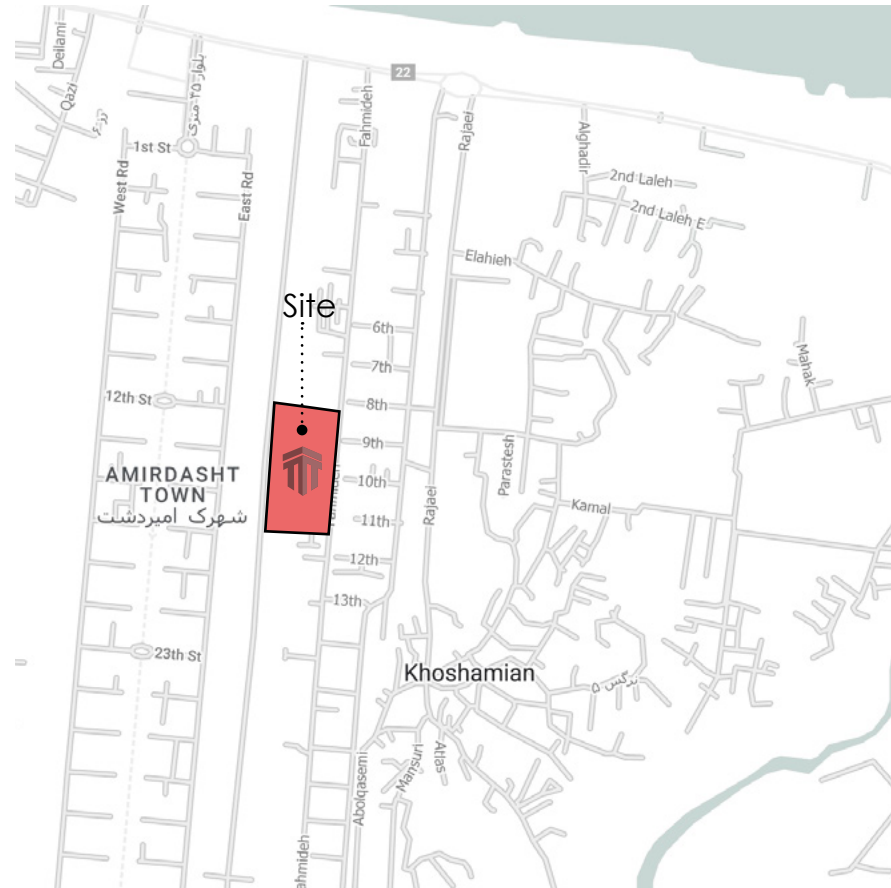
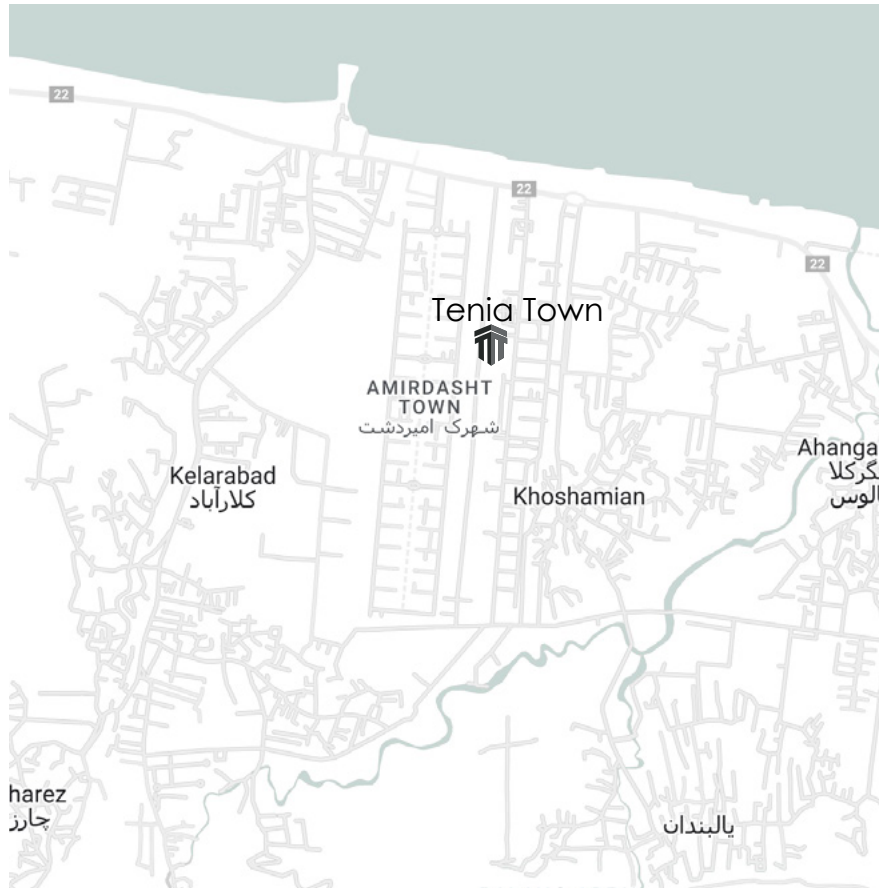
General Information

Tenia Twon

Total Area: 27000 m²

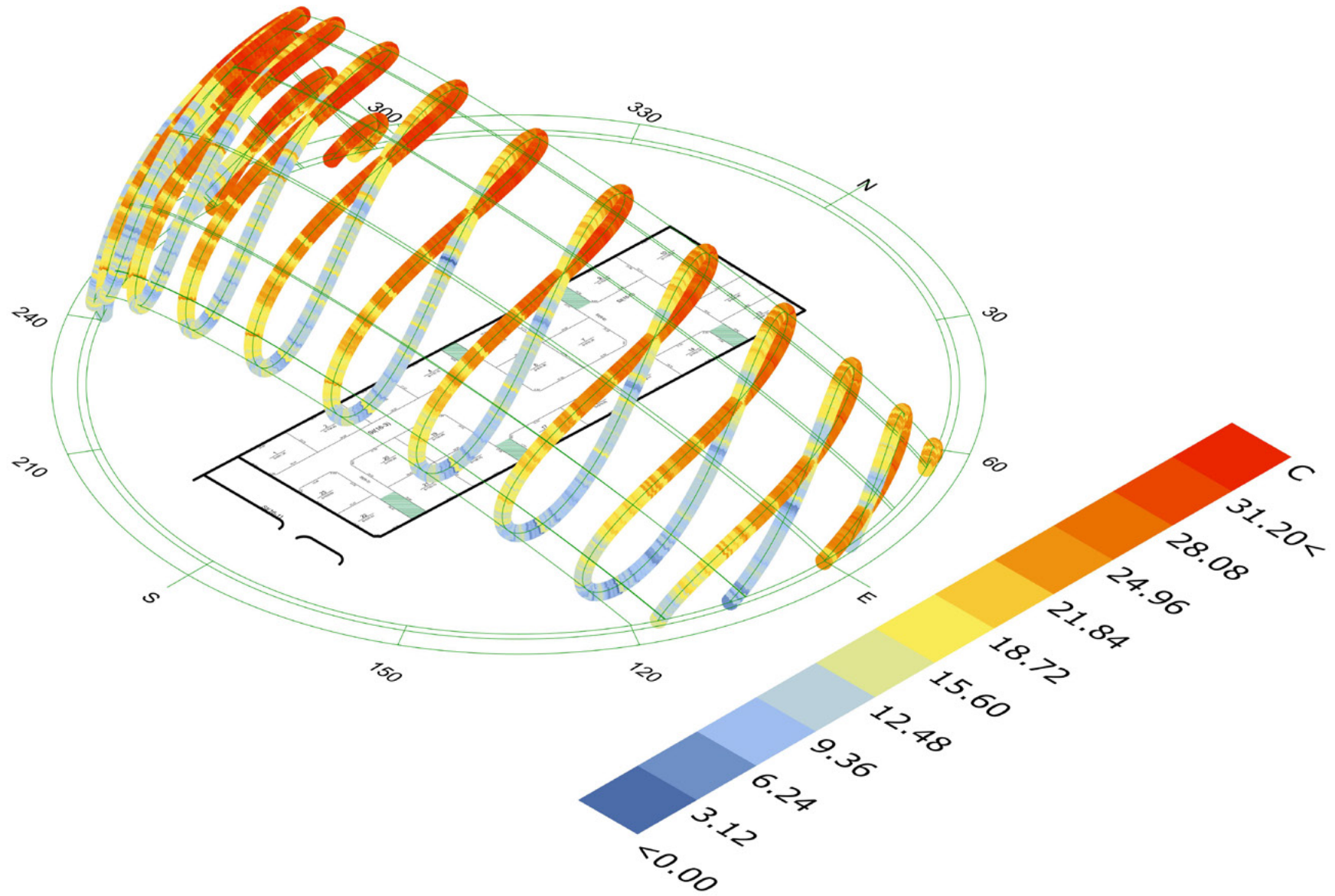
Total Blocks: 23 in 17000 m²

Total In Common Areat: 10000 m²



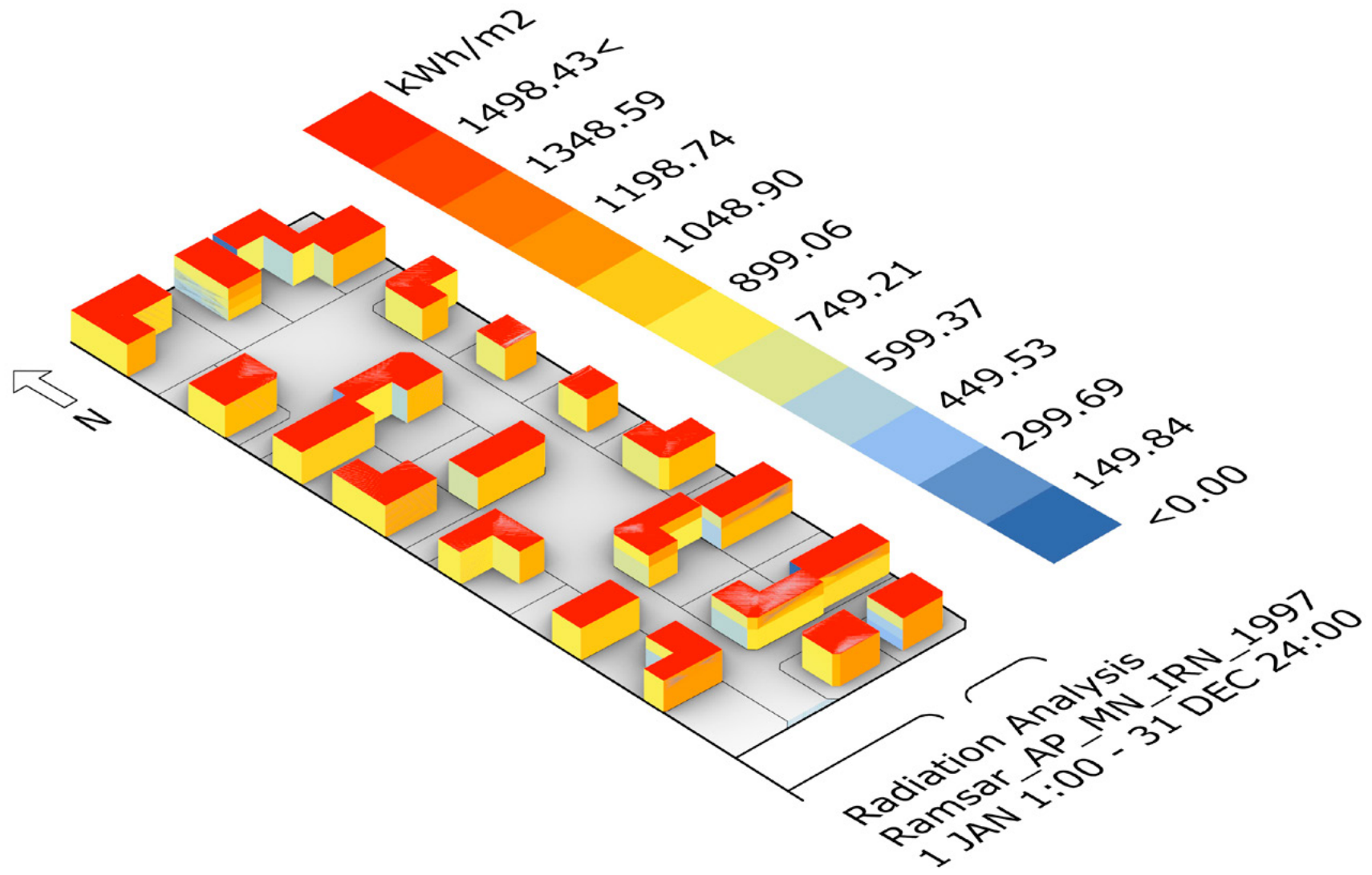
Site Aanalysis

Sun and temperature



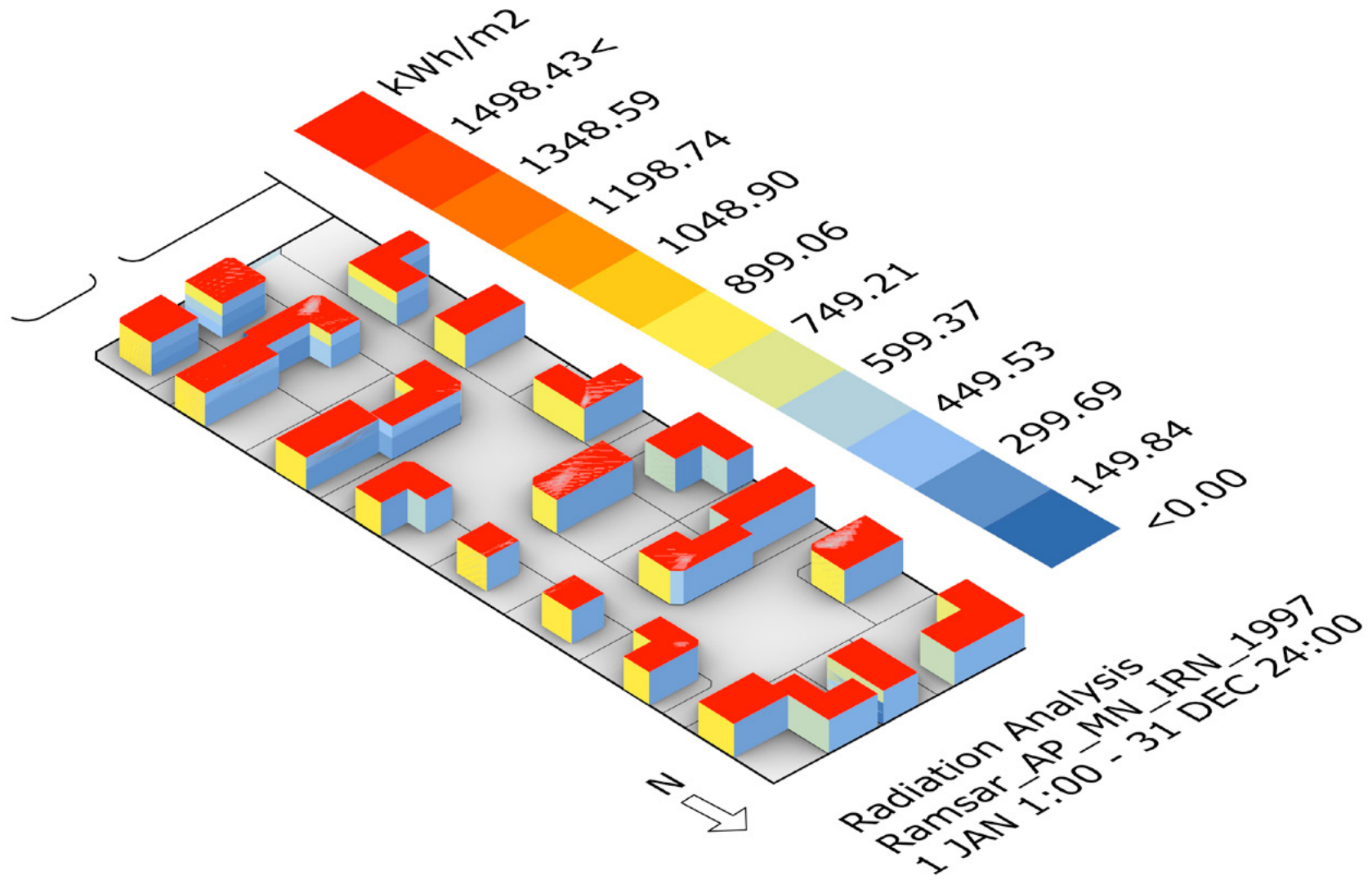
Site Aanalysis

Sun



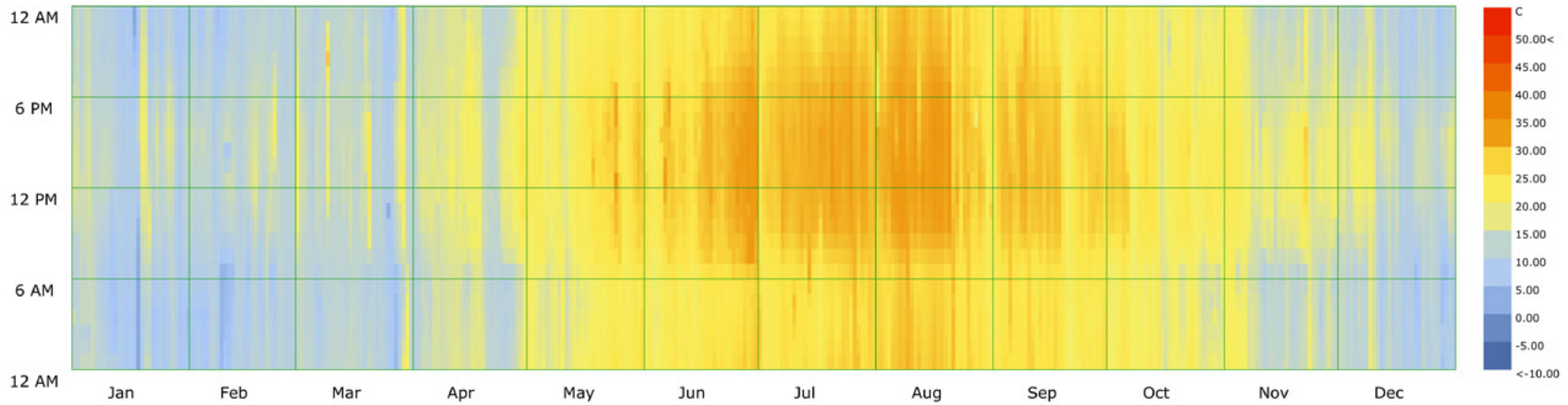
Site Aanalysis

Sun

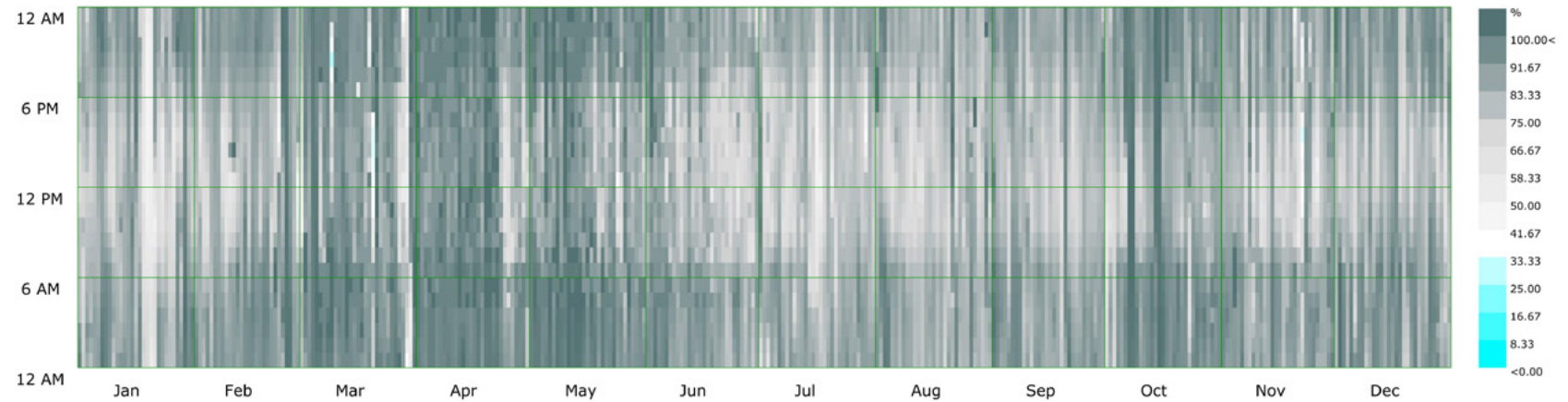


Site Analysis

Annual temperature and Humidity



Dry Bulb Temperature (C) - Hourly
Ramsar.AP_MN_IRN
1 JAN 1:00 - 31 DEC 24:00

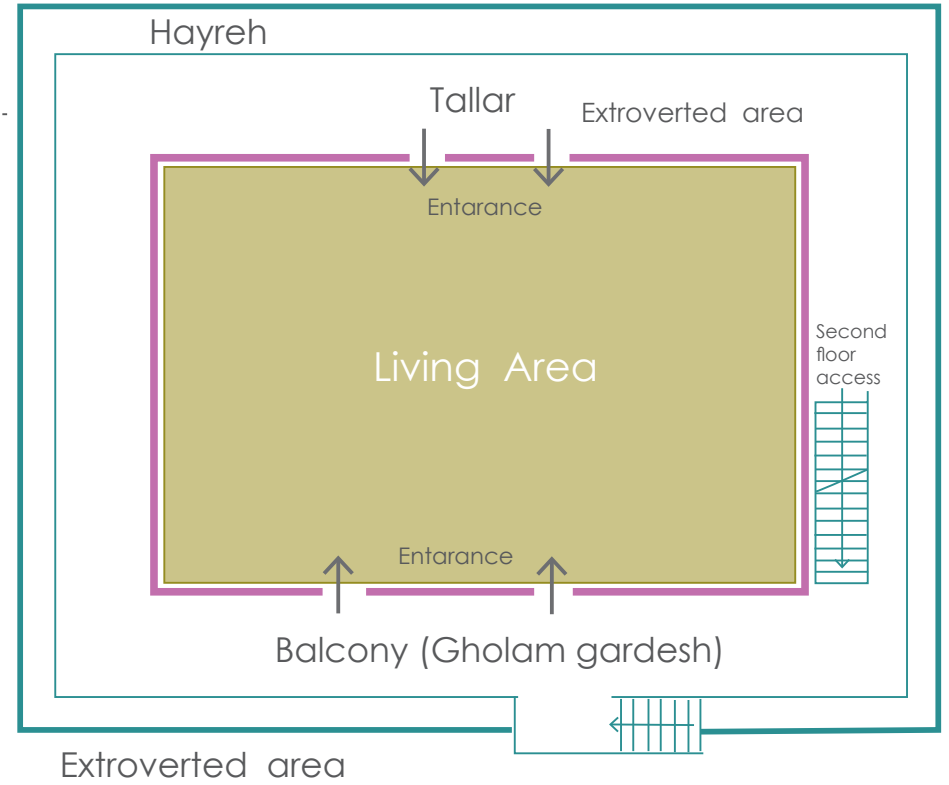
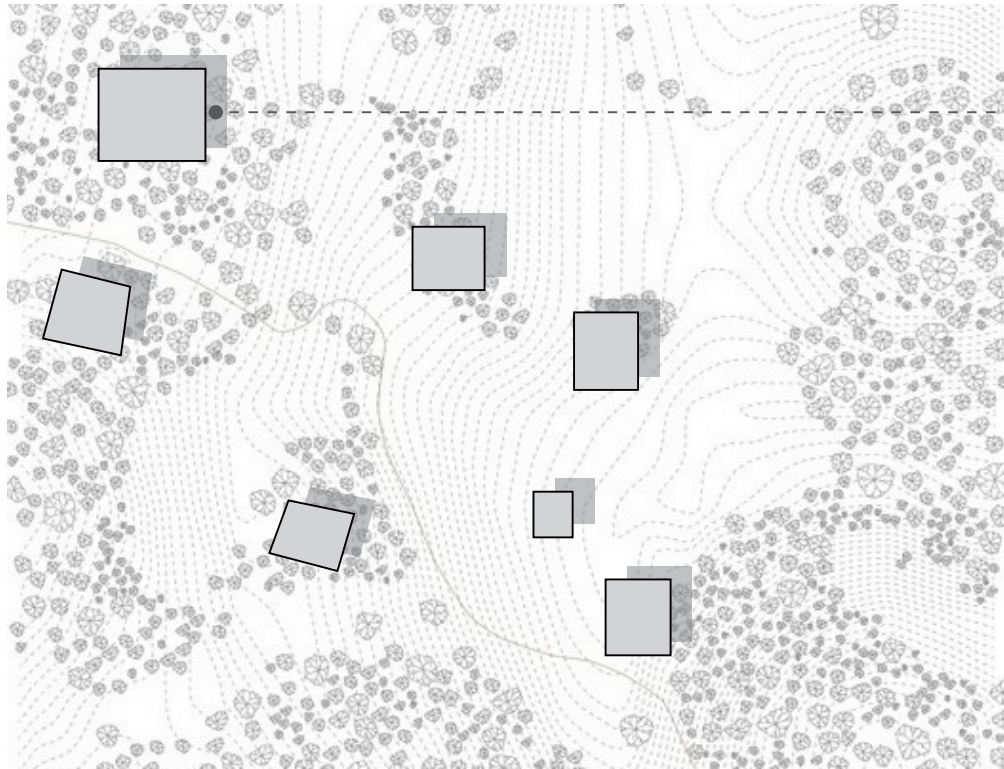


Relative Humidity (%) - Hourly
Ramsar.AP_MN_IRN
1 JAN 1:00 - 31 DEC 24:00

House Typology In North of Iran

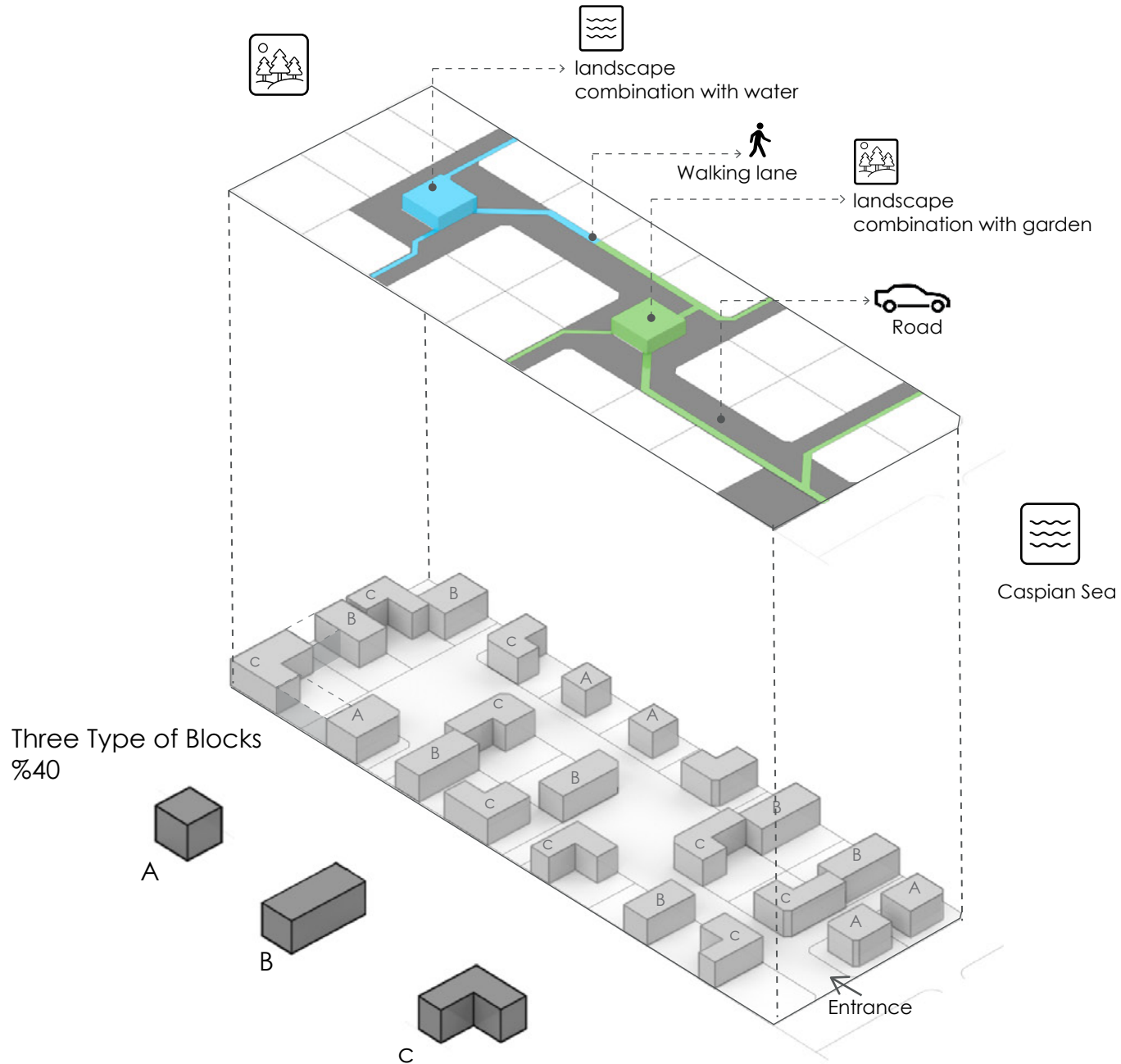


House Typology In North of Iran



Design

Landscape Design Idea

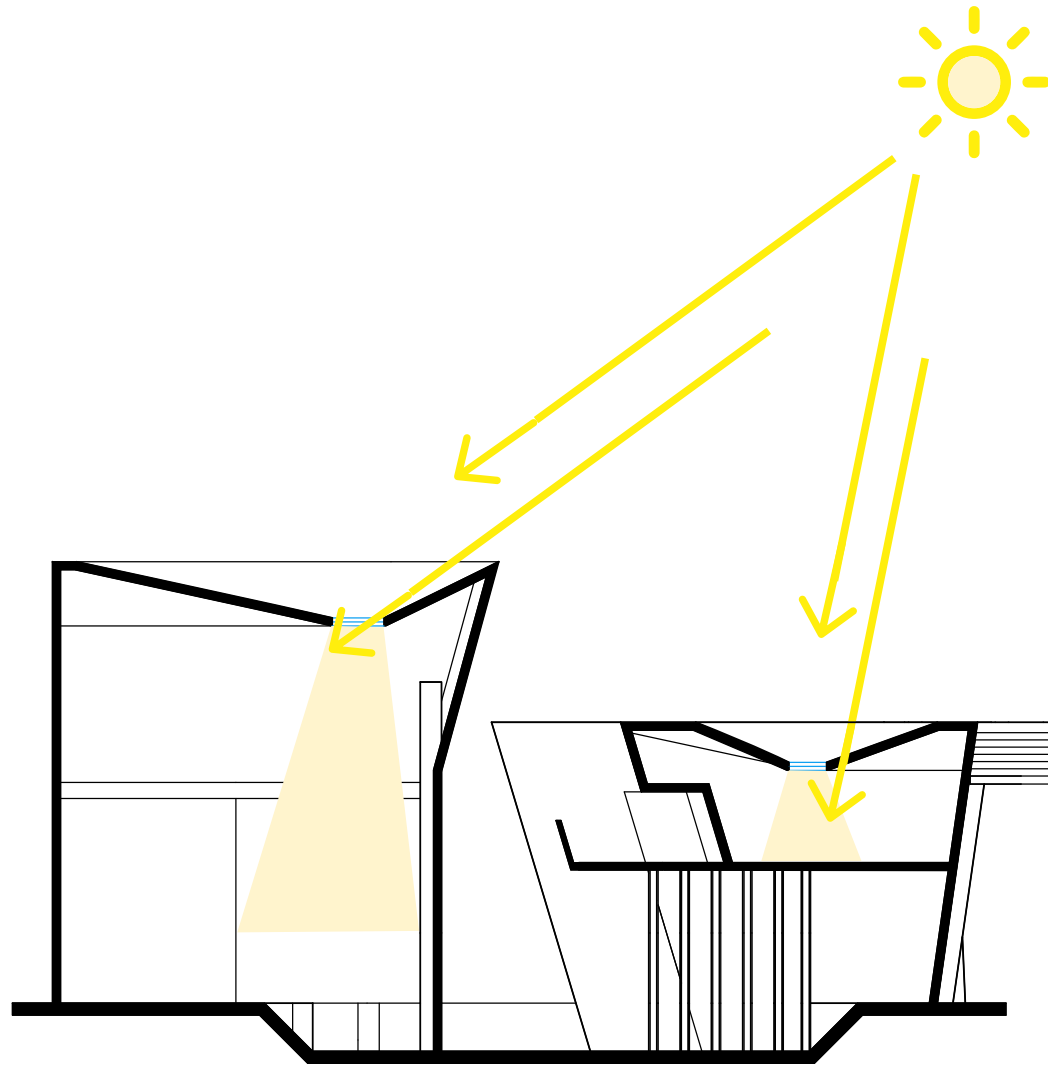








Alt 01
Section





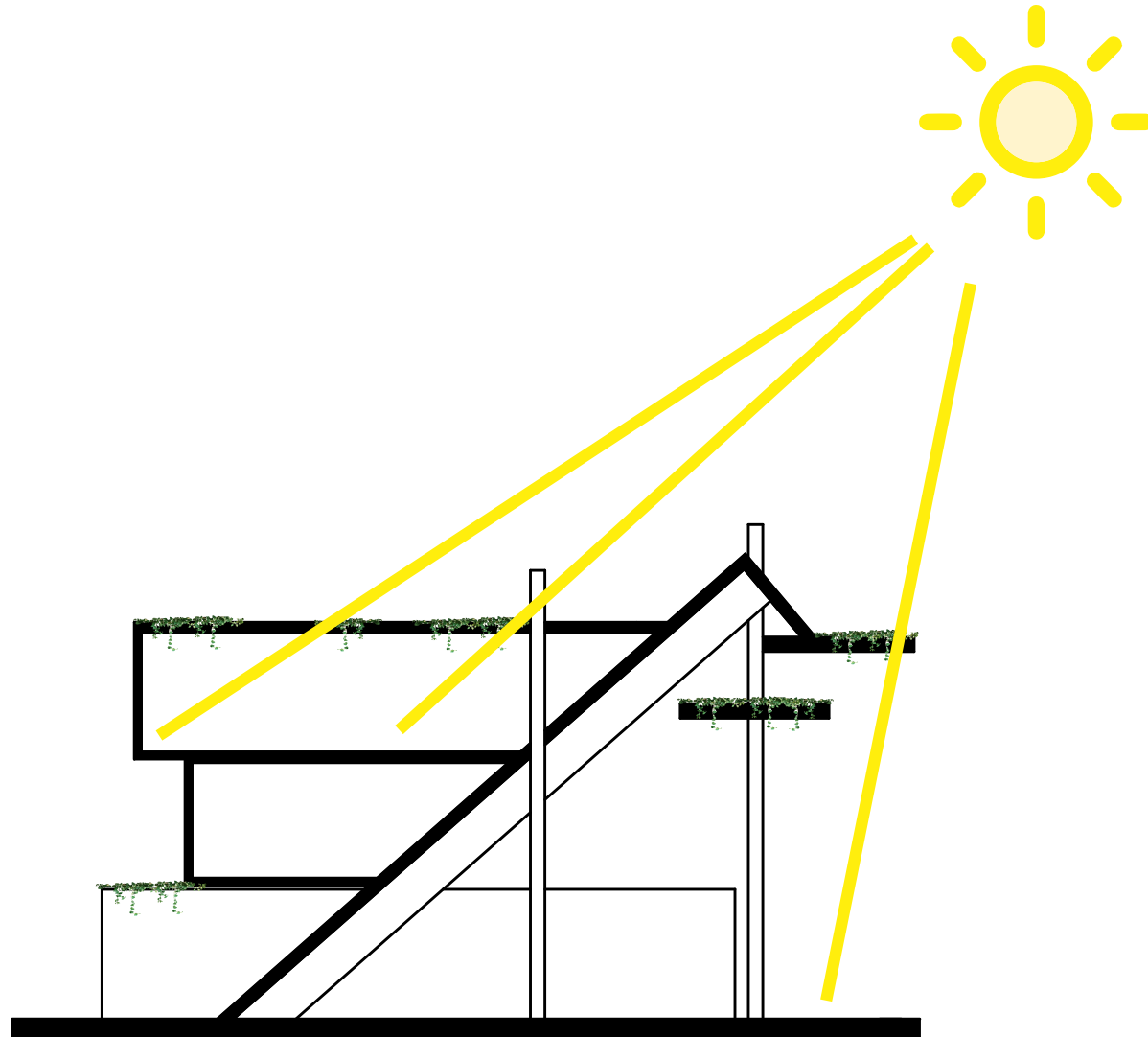
Alt 02







Alt 02
Section







SADAF
ALIKHANI
Architect