



TENIA
TOWN





TENIA
TOWN

TENIA
COMPLEX

Path

Villas

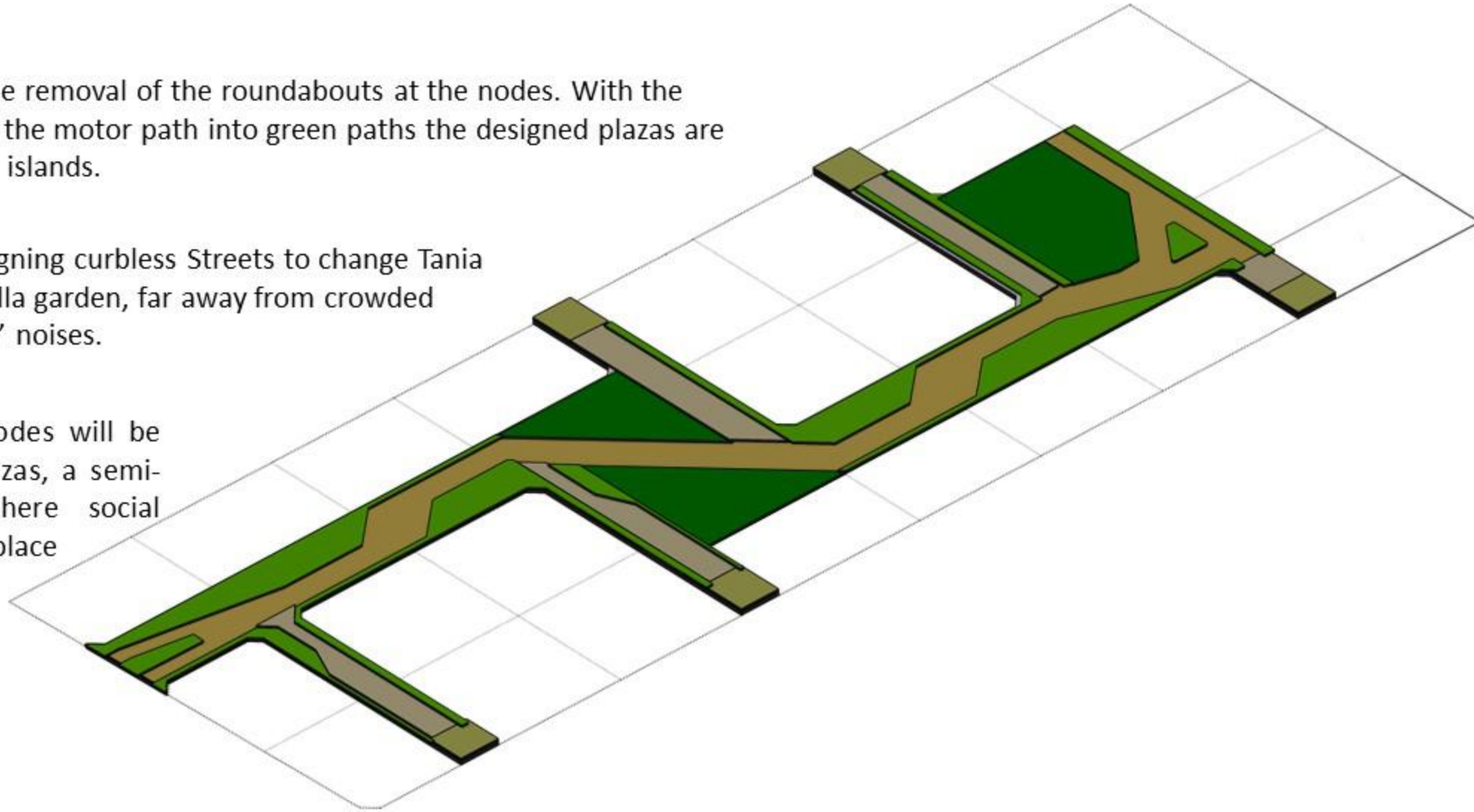
Plazas

Entrance & Complex

The main path: The removal of the roundabouts at the nodes. With the transformation of the motor path into green paths the designed plazas are no longer isolated islands.

Green Paths: Designing curbless Streets to change Tania Town as a quiet villa garden, far away from crowded cities and vehicles' noises.

Plazas: Existed nodes will be replaced with Plazas, a semi-public space where social interactions take place



Path

Villas

Plazas

Entrance & Complex



Curbless Path: The design of Tania Town as a villa garden with a green path in the middle. Villas and green paths will interact together and create the whole atmosphere of the town.

Path

Villas

Plazas

Entrance & Complex

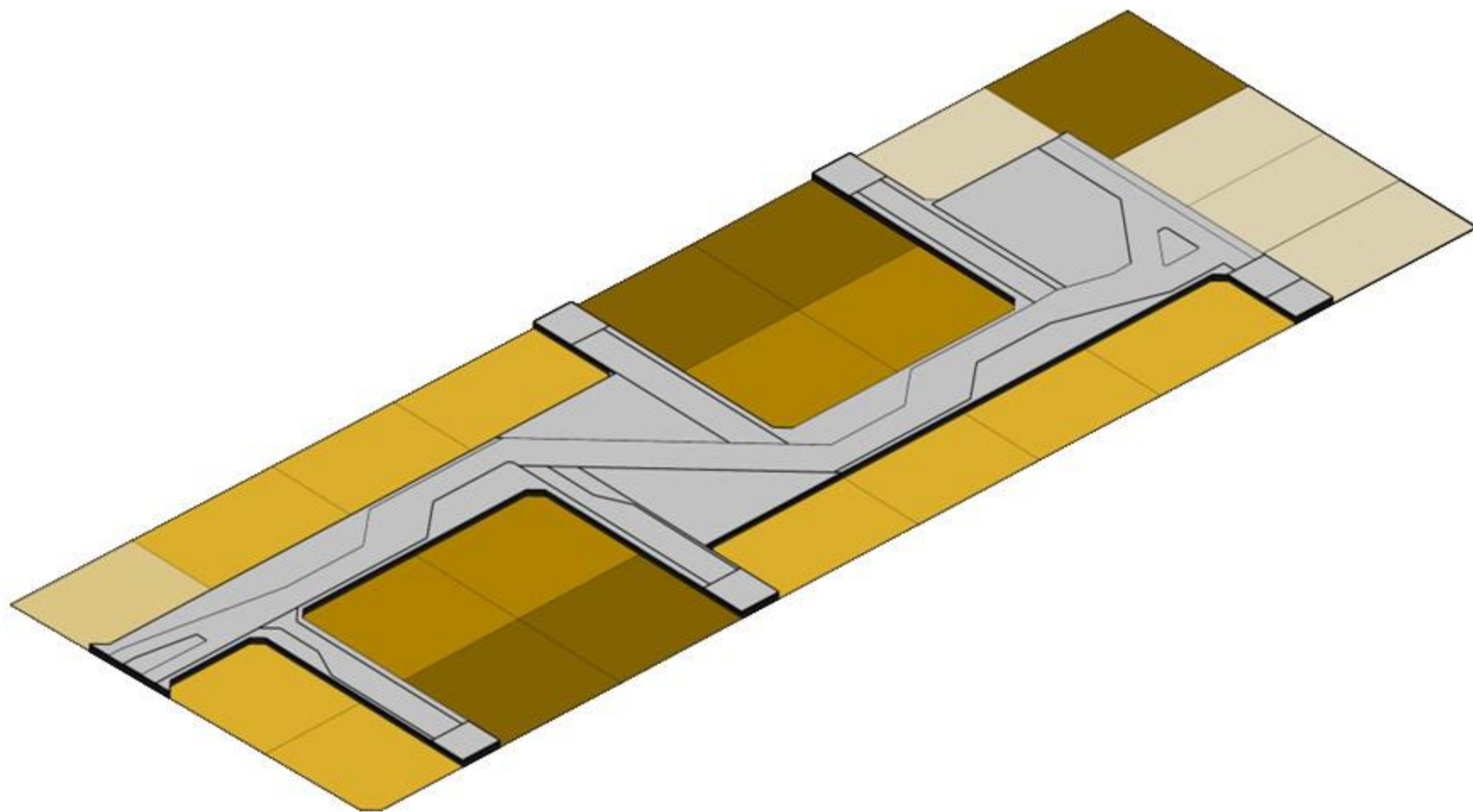
Complex

Type 1

Type 2

Type 3

Type 4



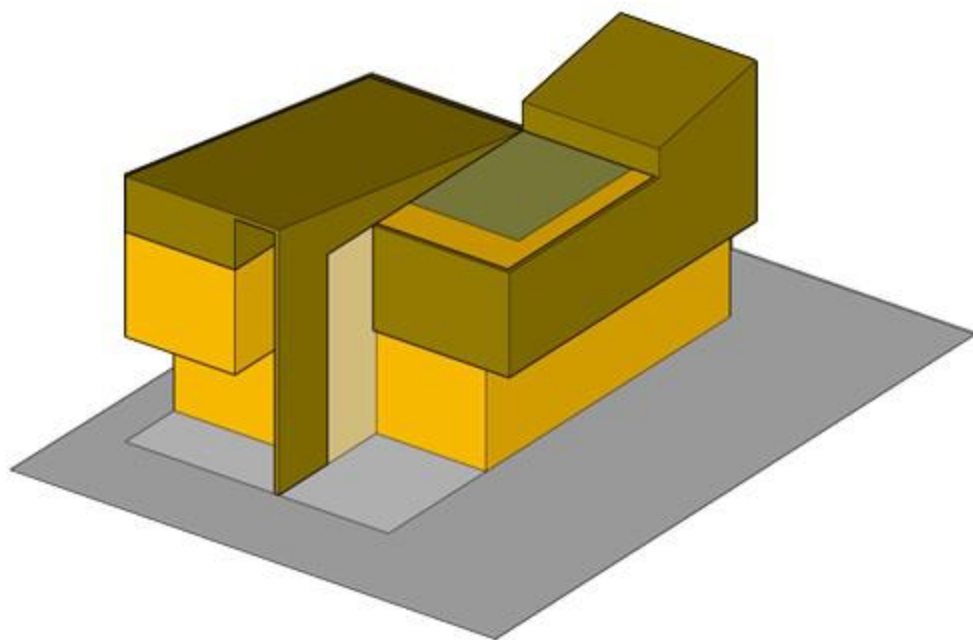
Path

Villas

Plazas

Entrance & Complex

- According to North of Iran's climate, slopping ceilings are chosen, resulting in designing a diverse skyline.
- The roof garden is created among these slopping volumes, contributing the integrity and identity of the villas. Finally, a shell covers all the forms of the villas.

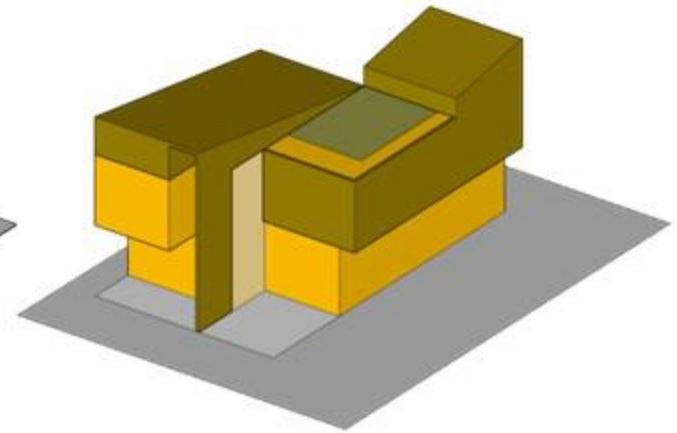
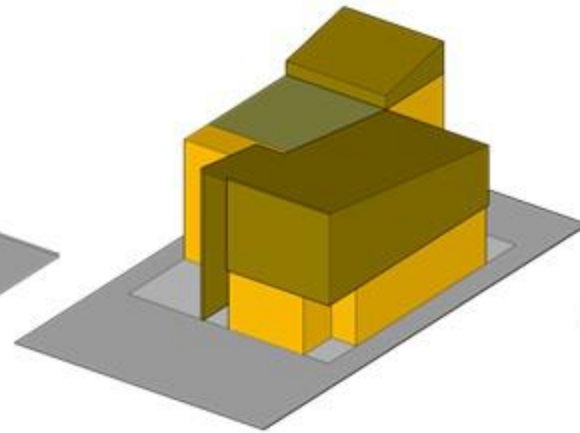
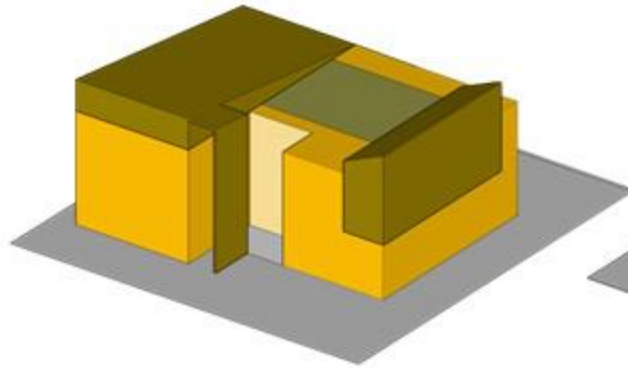
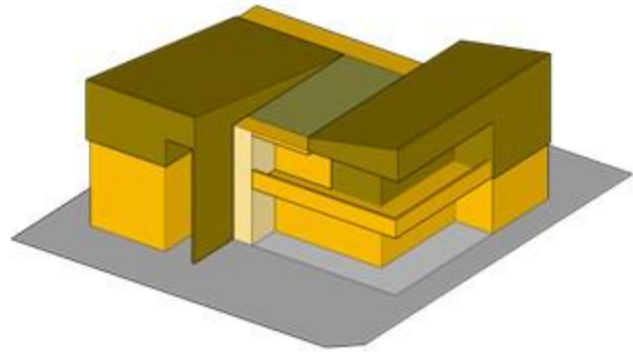


Path

Villas

Plazas

Entrance & Complex



- According to the subdivision of the land, the villas are classified to 4 different types.









Path

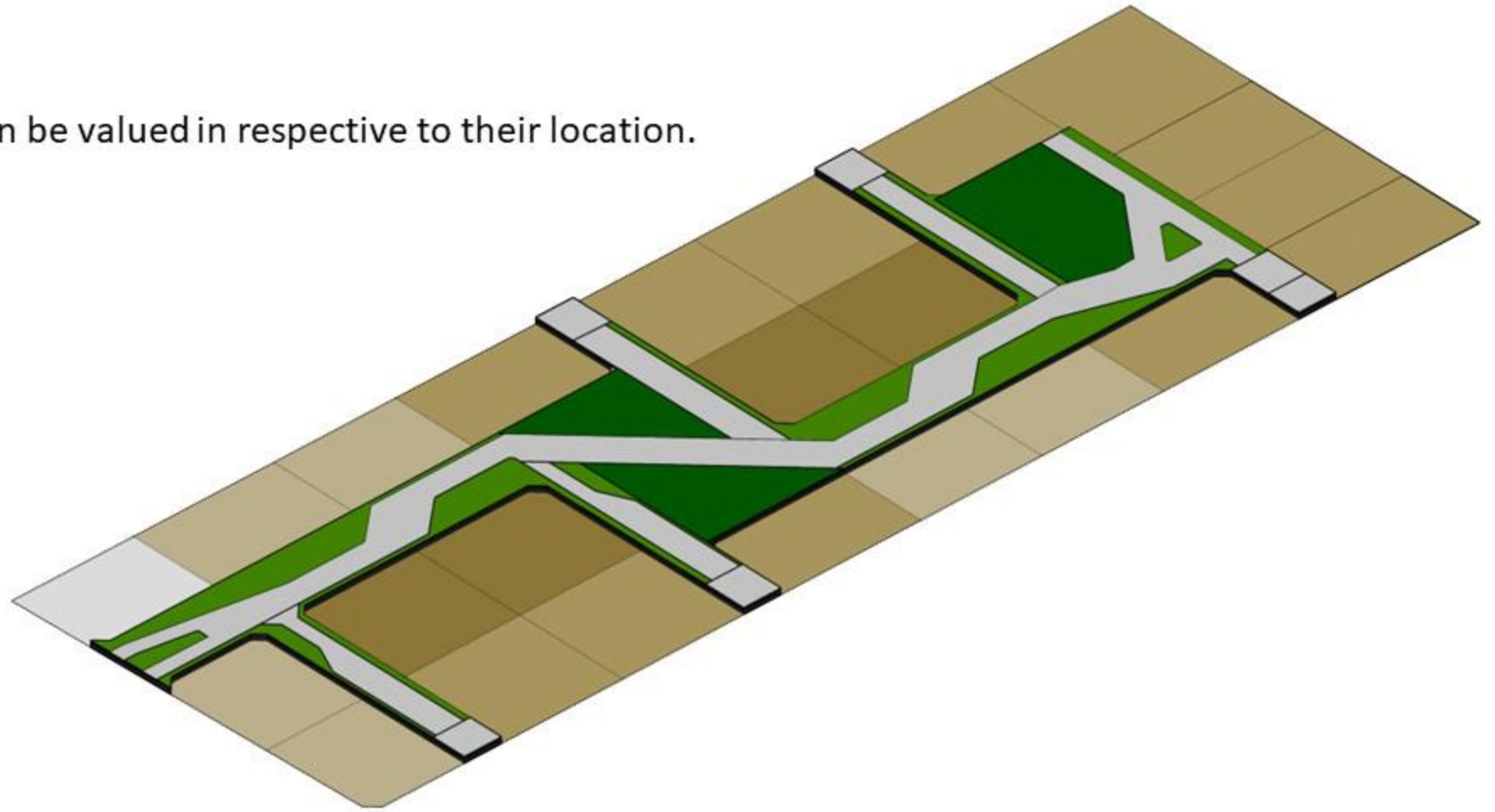
Villas

Plazas

Entrance & Complex

Each of the types can be valued in respective to their location.
(A⁺, A, B)

- A⁺
- A
- B



Path

Villas

Plazas

Entrance & Complex



A+ villas have large terraces facing the garden and a plaza, depending on their location.

Path

Villas

Plazas

Entrance & Complex

- Parcels 9, 10 and 11 are designed flexible
- There is a possibility of connecting up to 3 adjacent parcels with minimum impact to the design of the types themselves



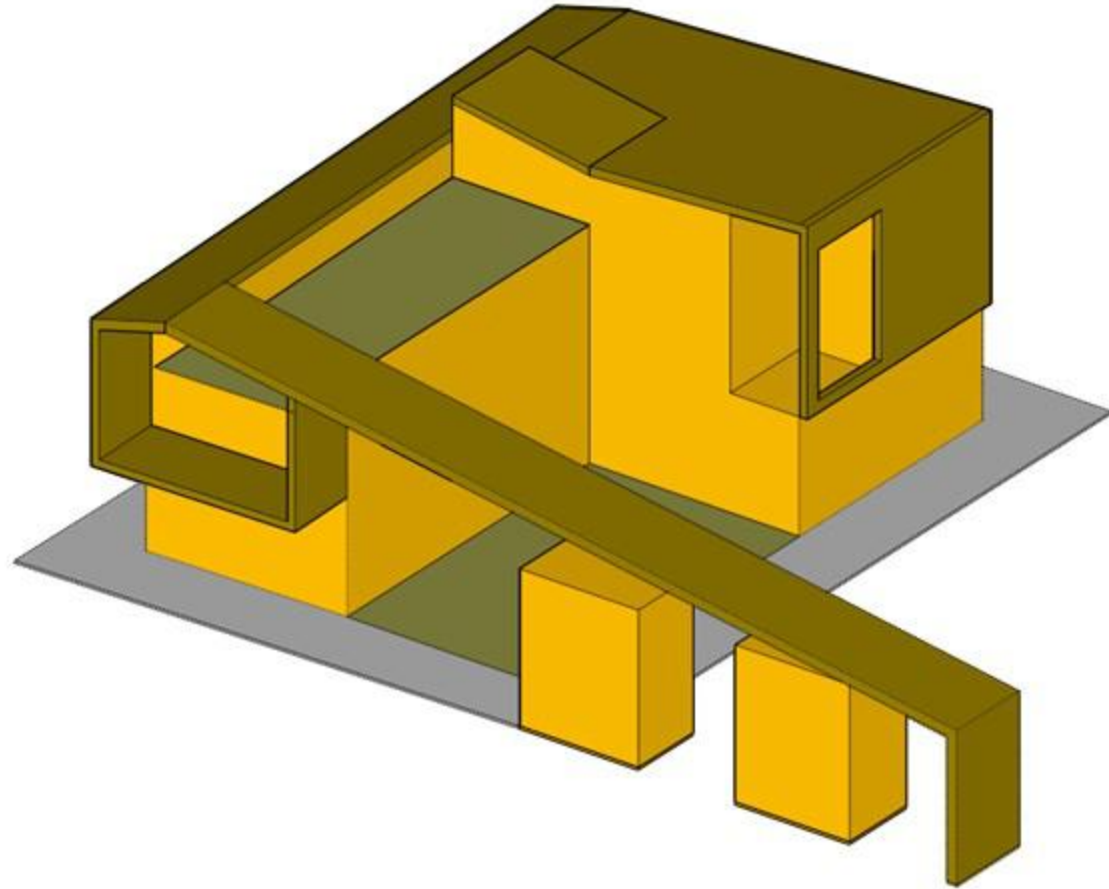
Path

Villas

Plazas

Entrance & Complex

- Sloping volumes and shells cause the entrance to combine with the complex.
- That causes to distinguish the entrance and the complex which are harmonized with villas and brings a unified identity to the town.





TENIA
TOWN

TENIA
COMPLEX





TENIA
TOWN





TENIA
TOWN

TENIA
COMPLEX

KID'S ROOM

CAFE



TENIA
COMPLEX

KID'S ROOM

CAFE



CAFE

CAFE
COMPLEX

CAFE

KID'S ROOM

INFORM





TENIA
TOWN

KIDS ROOM

CAFE





Path

Villas

Plazas

Entrance & Complex







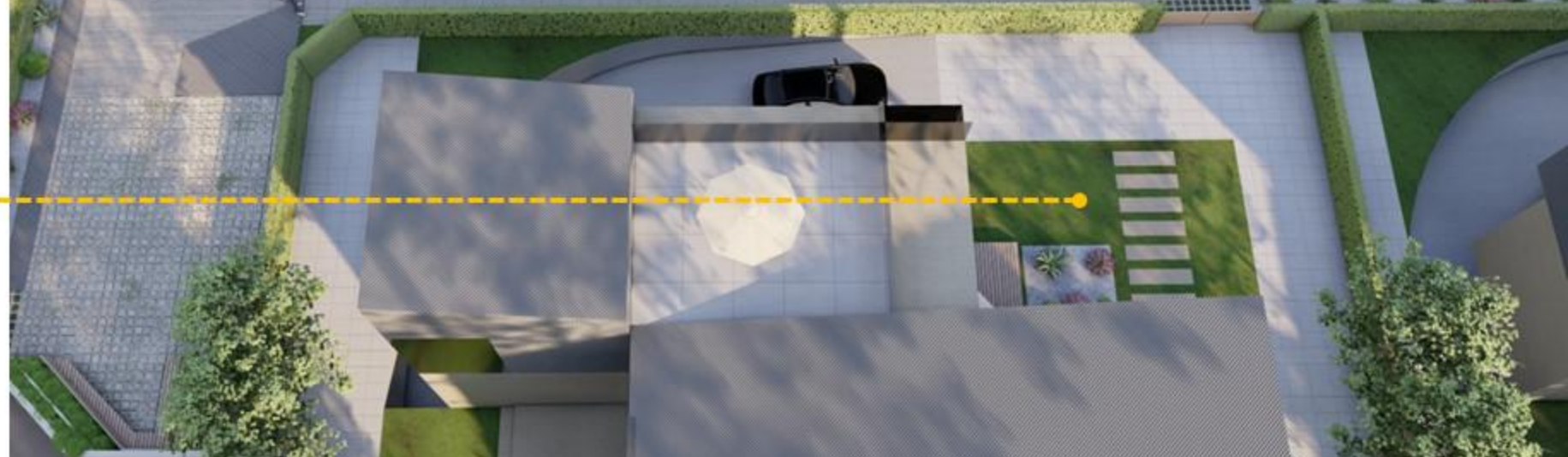




Semi Public Area

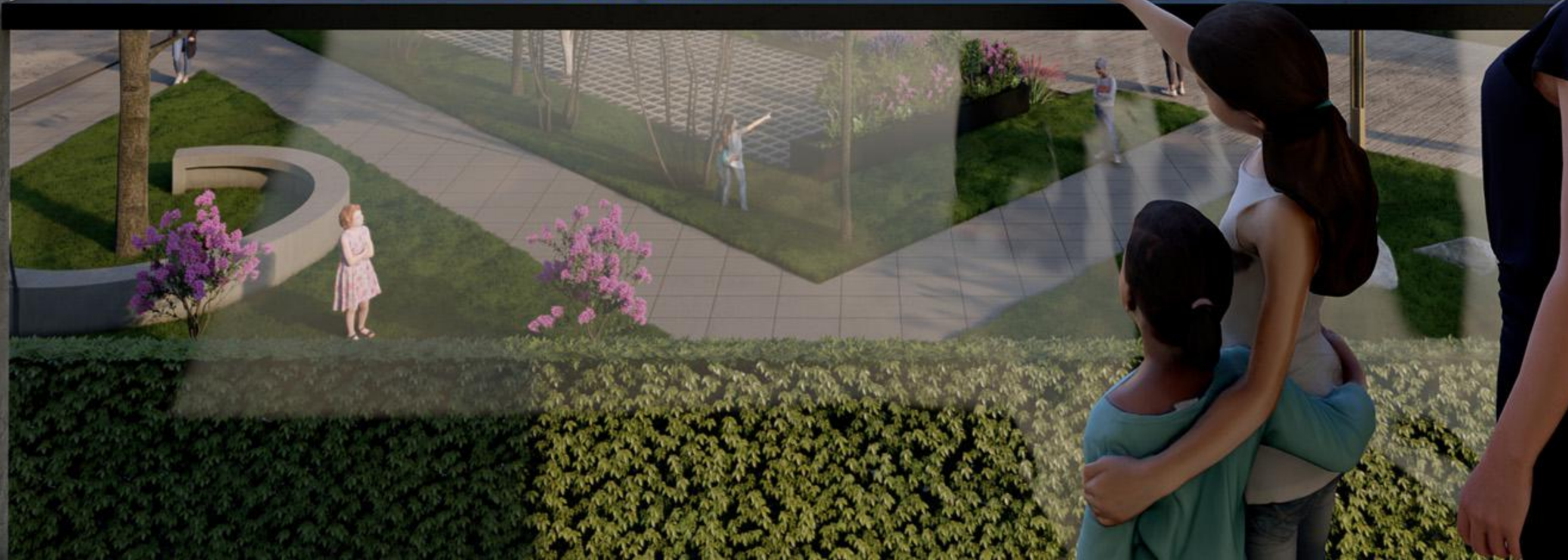


Semi Private Area



Private Area









Path

Villas

Plazas

Entrance & Complex











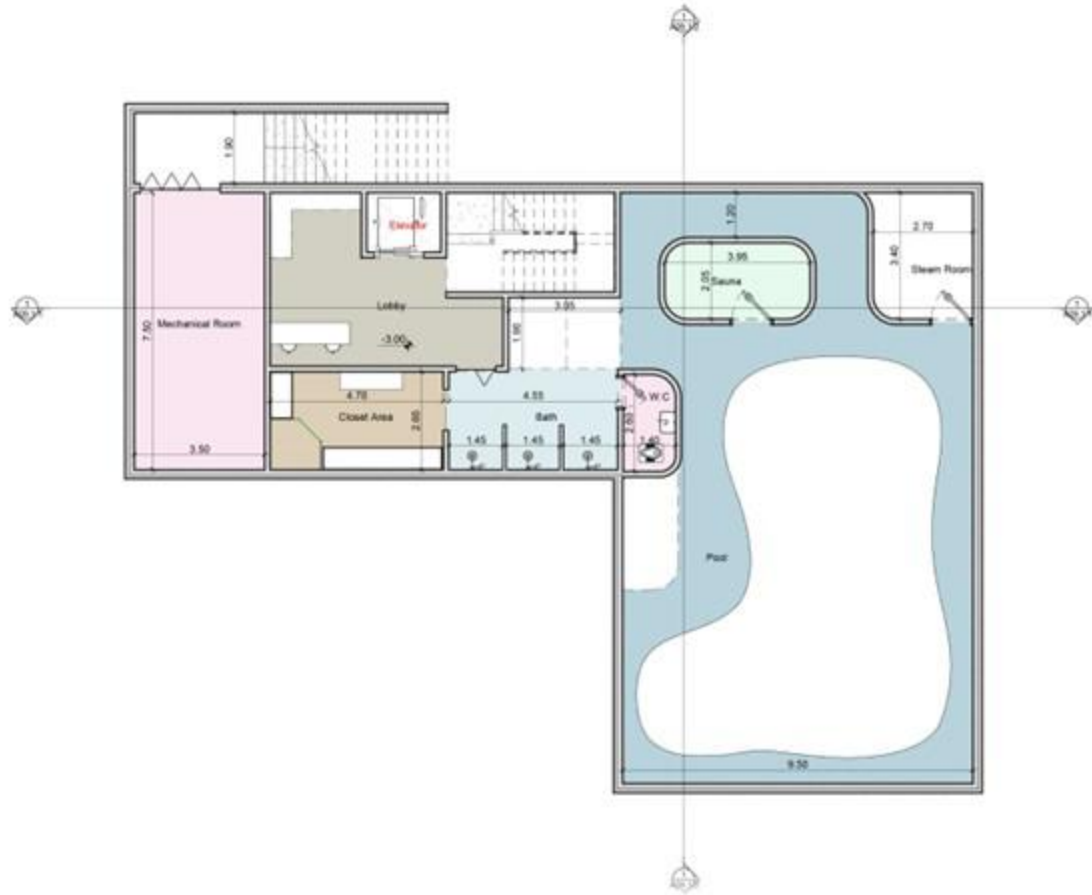




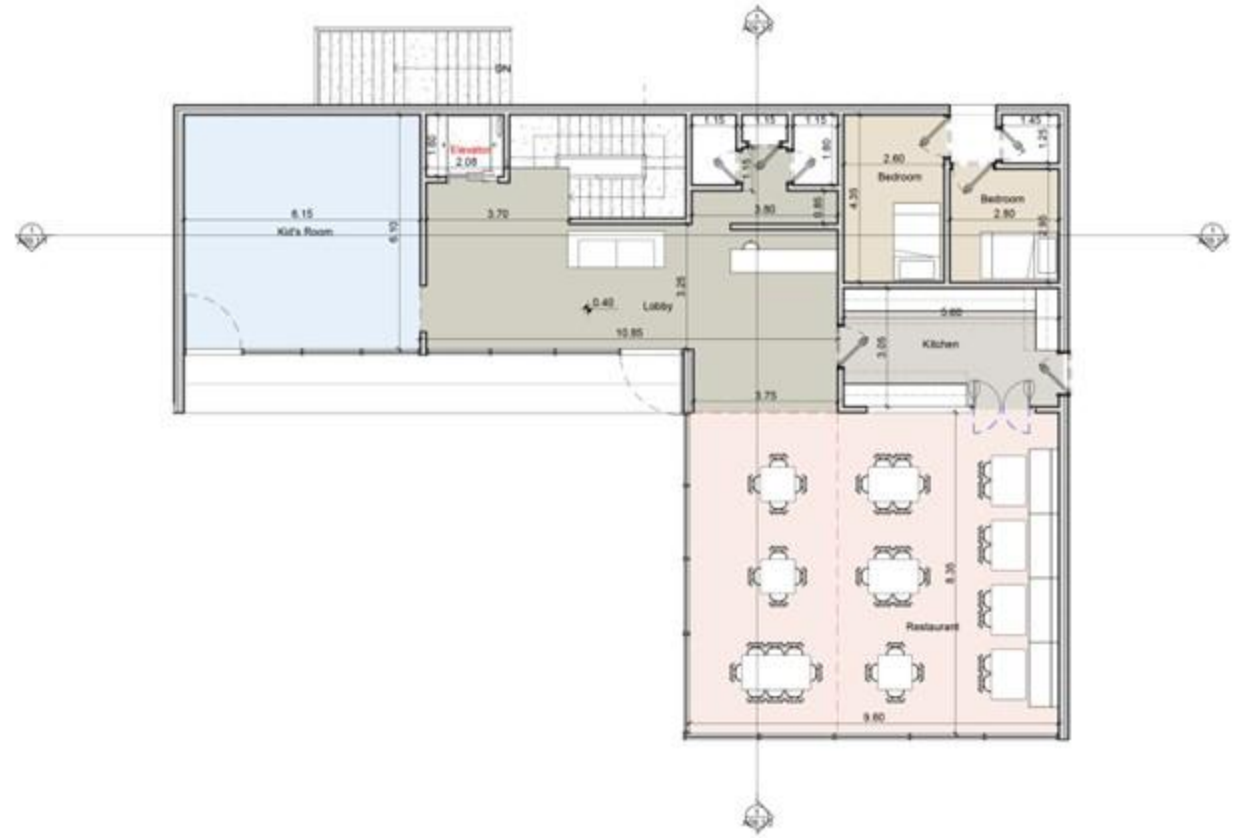
Plans

Sections

Materials



• Basement Floor Plan

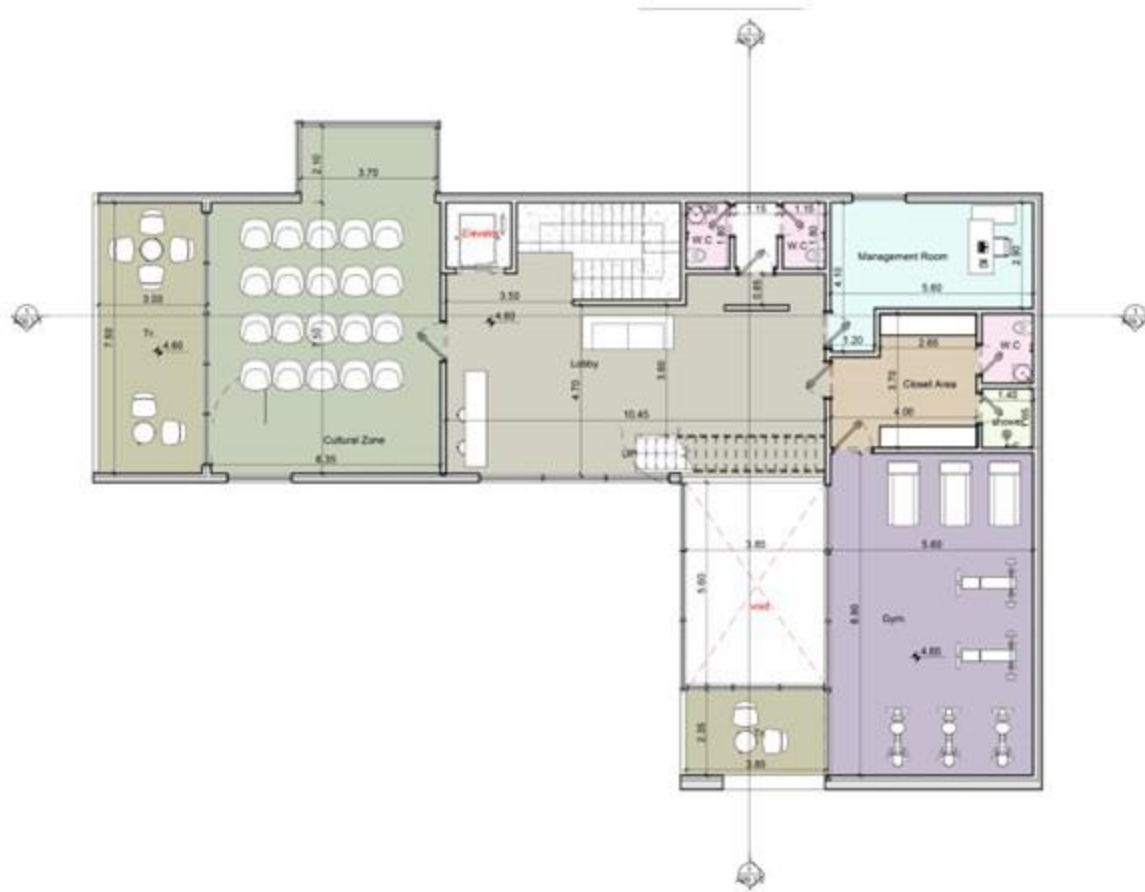


• Ground Floor Plan

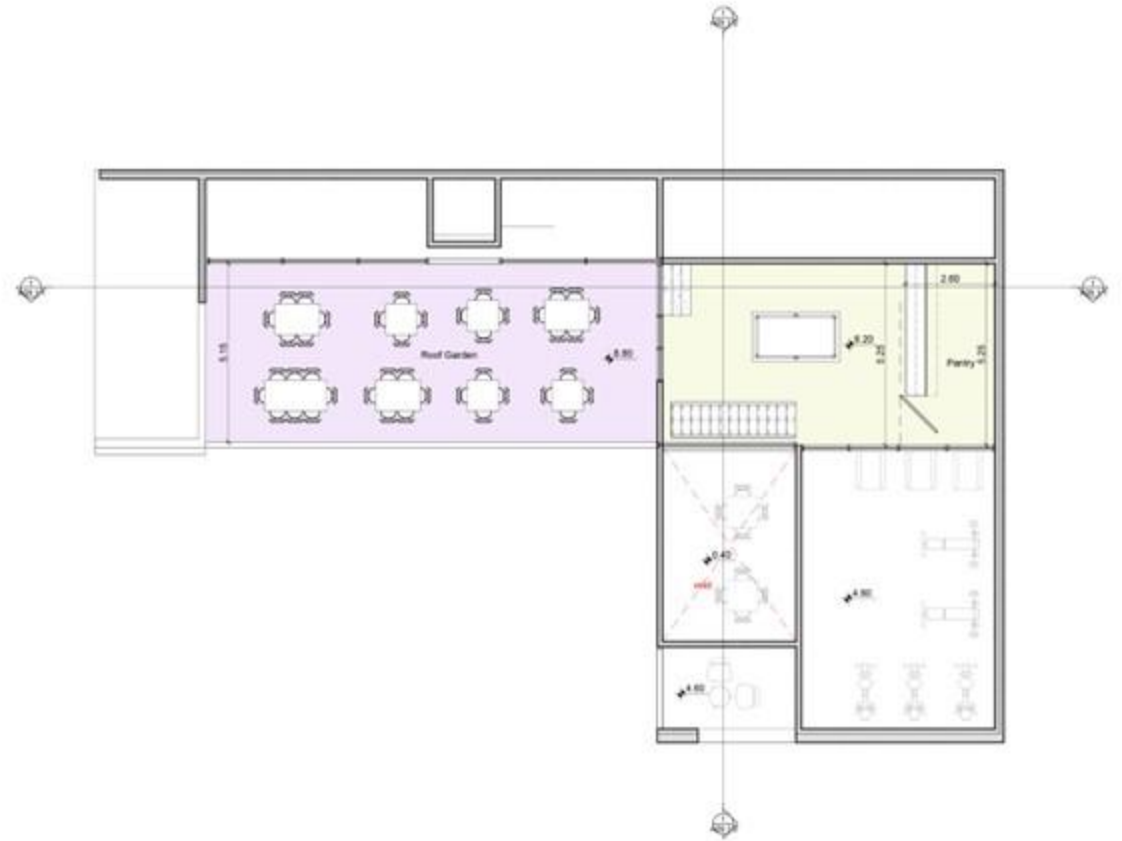
Plans

Sections

Materials



• First Floor Plan

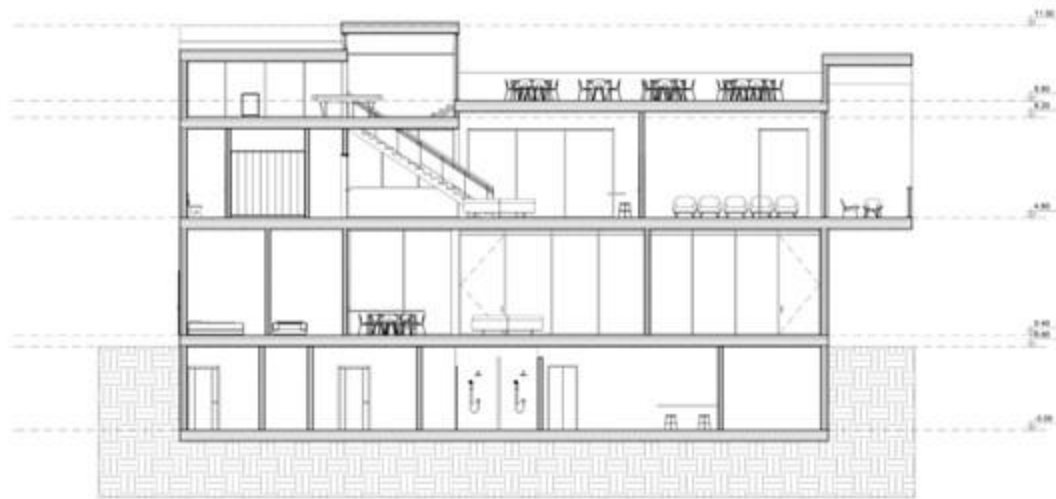


• Second Floor Plan

Plans

Sections

Materials



- Section A-A



- Section B-B

Plans

Sections

Materials

Stretch Metal

Concrete

Curtain Wall

Green Bushes

Brushed Concrete





