

# مجموعه مسکونی تنیا توان گزارش اولیه طراحی شماتیک معماری

تاریخ: 02 / 02 / 16  
کارفرما: تنیا کو . گروه طرح تو طرح مشاور: صدف علیخانی . مهدی فرقانی



- Case Study

- Site Analysis

- Design Proposal



Master Plan



Commercial building



Entrance

— **Case study**

# Yujidao

## General Information

**Type :** Landscape Design

**Location :** Nanchong ,China

**Completed :** 2021

**Architect :** BLVD International

**Facilities :** Park,Camping area ,Bicycle line ,walkpath

**Area :** 1000000 m<sup>2</sup>



**Yujidao Park:** Nanbu County, Nanchong is known as the "Second City of Chengdu-Chongqing Circle" in Sichuan."A history of the south, the love of water through the ages", for thousands of years, the water of the Jialing River has been rushing here, nourishing everything, and the people of northern Sichuan have thrived here and compose a glorious chapter. In the principle of respecting nature and advancing into the future, the design puts forward the concept of "Jialing Pearl, Brilliant Riverside". It introduces the Jialing River water into the site to create Nanbu Shuicheng where the city is on the water and the water is in the city, creating a closer and intuitive experience for people's water activities.

AREA :1000000 m<sup>2</sup>

PROGRAMS: Park ,Garden



Yujidao  
Landscape



# Cradle Mountain Gateway

## General Information

**Type :** Publicspace

**Location :** Cradle Mountain ,Australia

**Completed :** 2020

**Architect :** Cumulus Studio

**Facilities :** Park,Urbanscape



**Cradle Gateway:** Cradle Mountain Visitor Centre is a building of contrasts. It's imposing but harmonious. It's an abstract interpretation of nature. And it's modern with a rightness unrooted in time. Most surprising of all, perhaps, is how the raw exterior unwinds into a warm, soft, delicate timber lining.

PROGRAMS: Publicspace



# Cradle Mountain Gateway

## Landscape





# Cradle Mountain Gateway

## Landscape





# Cradle Mountain Gateway

## Landscape



# Mason

## General Information

**Type** : Resort suite

**Location** : Pattaya, Thailand

**Completed** : 2019

**Architect** : VaSLab Architecture

**Facilities** : Water sports facilities ,pool,restaurant, spa, garden,beach

**Area** : 9039 m<sup>2</sup>

**Capacity** : 35 suites

**7Pines kempisik** : Inspired by its local craftsmanship of stone masonry, Ang Sila community, concrete and stone has been carefully cut and crafted, forming a unique architectural design. Mason may well include having a positive impact on its context. A dying breed, the stonemasons of Ang Sila need projects like this if their craft is to stand a chance of survival. As a matter of fact, their generation may well be the last. Thus, the collaboration between the project owner, the architect and the local artisans makes Mason not only a retreat resort, but the architecture that helps local people and their community to have the new opportunities in their lives and careers.



AREA :9039 m2

CAPACITY: 35 suites

PROGRAMS: Resort



Mason  
Residential Complex





# Mason Residential Complex





# Mason Residential Complex



# X2 Oceanphere Villa

## General Information

**Type** : Residential

**Location** : Pattaya ,Thailand

**Completed** : 2019

**Architect** : Creative Crews

**Facilities** : Accomodation

**Area** : 18000 m<sup>2</sup>

**Capacity** : 47 Villas



**X2 Oceanphere** : The X2 Pattaya Oceanphere is a villa resort situated in Pattaya, a well-developed beach town with cliché tourist destinations, hotels, and resorts chains. The site is located on the eastern seaboard of Thailand, facing the Gulf of Thailand where there are long stretches of beaches without much dramatic rocky or cliff terrain. The architectural language of the villa resort is derived from the aim to create man-made landscape with available materials and efficient construction methods.

AREA :18000m2

CAPACITY:47 Villas

PROGRAMS: Residentail



# X2 Oceanphere Villa Residential Complex





# X2 Oceanphere Villa Residential Complex



## ■ Site Analysis

# Site Location

## General Information

Distance From Tehran 

3Hours and 30 minutes ||| ||| Haraz road

4Hous and 25 minutes from Chalus Road

Distance From other cities

Namakabrud 7km

Motel QU 8 km

Chalus 20 km

Abbassabad 18.5 km





# Site Location

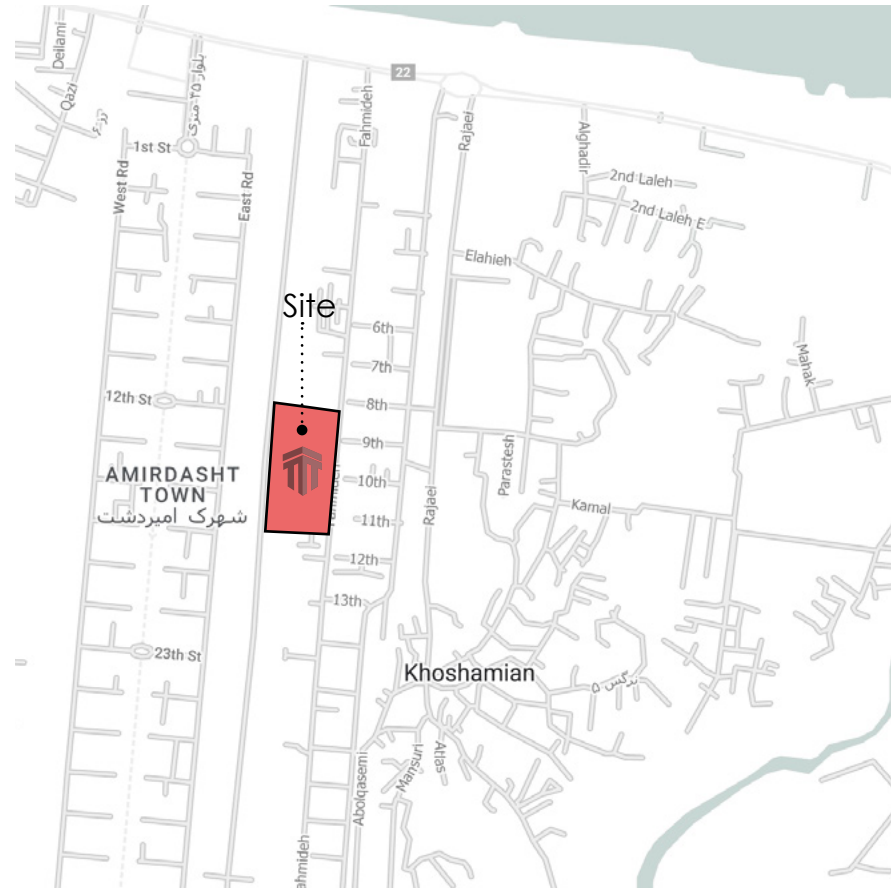
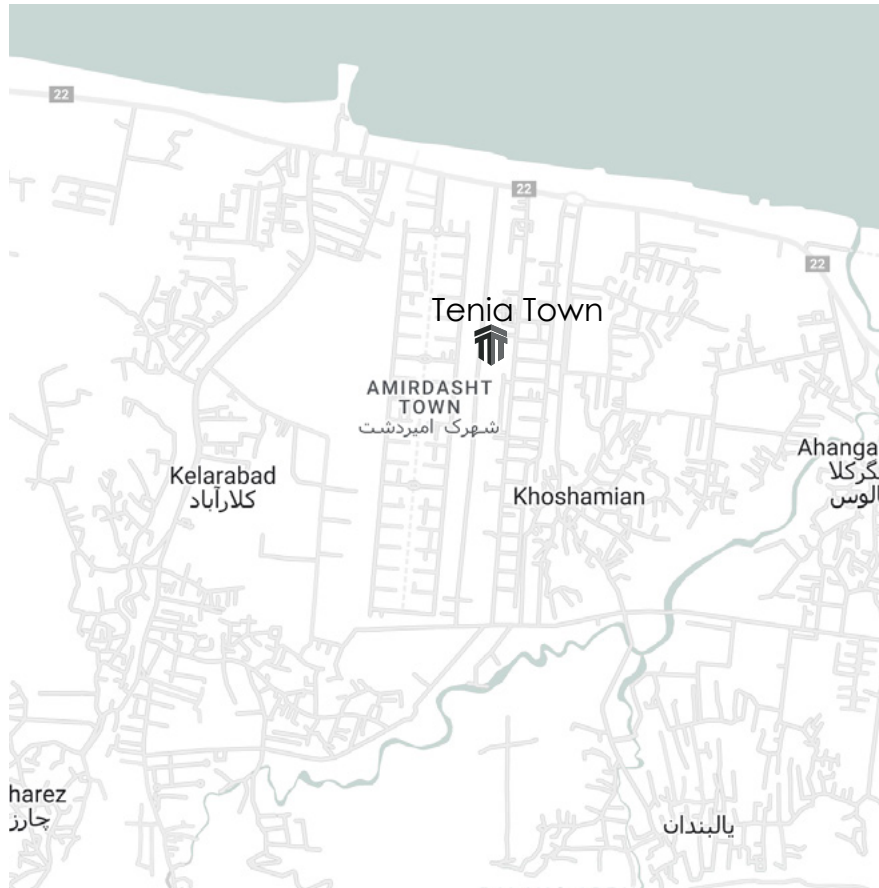
## General Information

Tenia Twon

Total Area: 27000 m<sup>2</sup>

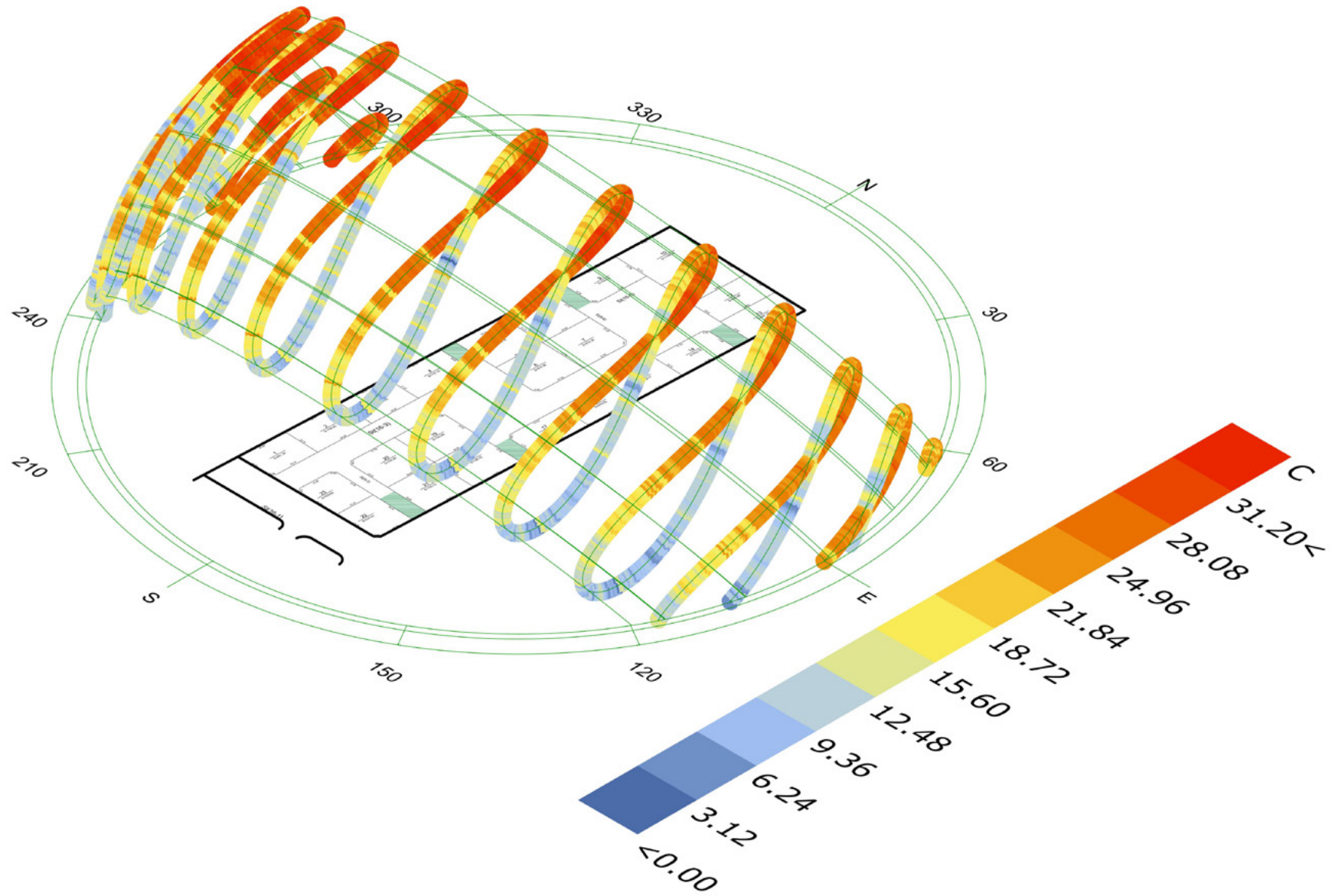
Total Blocks: 23 in 17000 m<sup>2</sup>

Total In Common Areat: 10000 m<sup>2</sup>



# Site Aanalysis

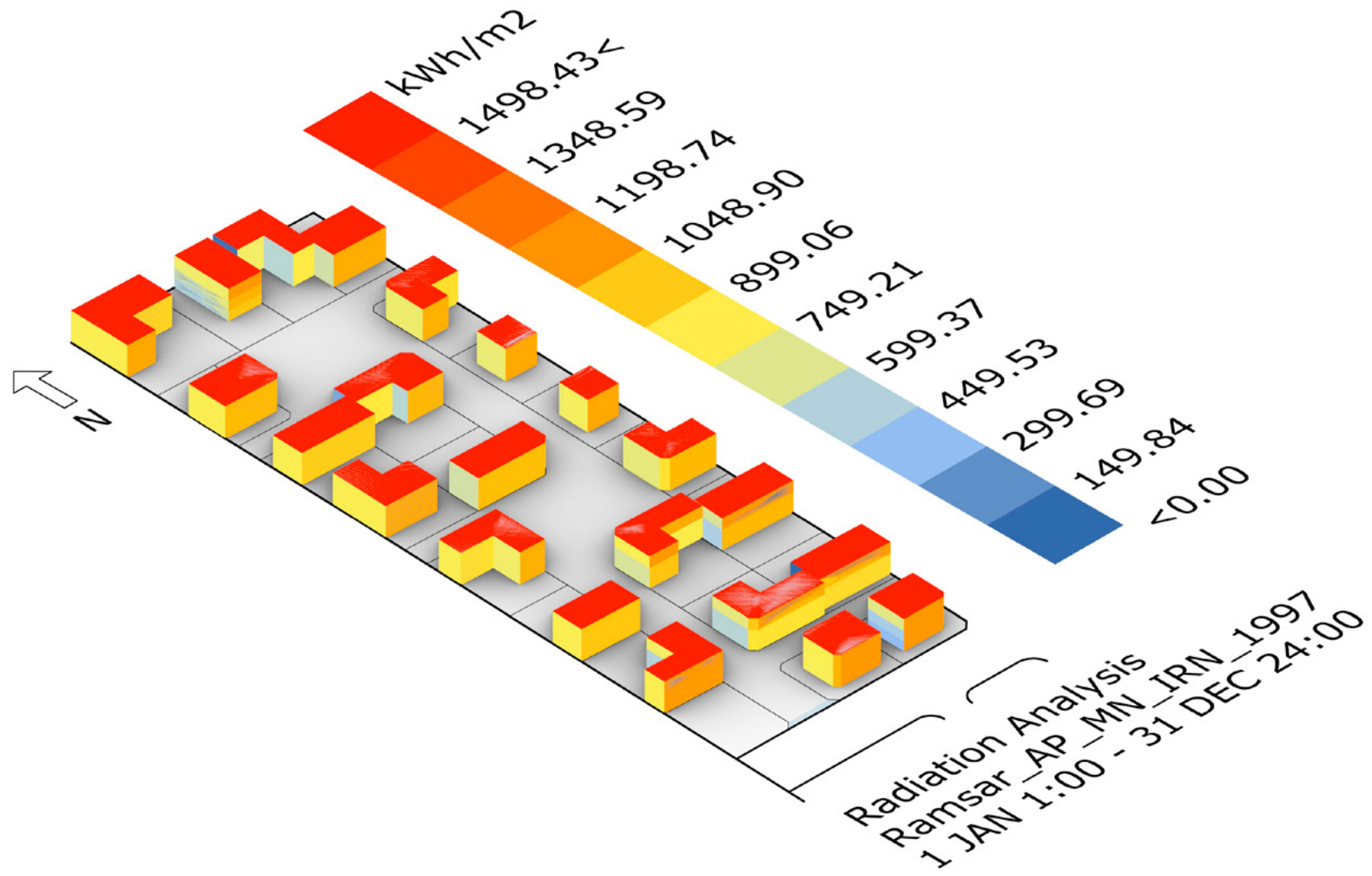
Sun and temperature





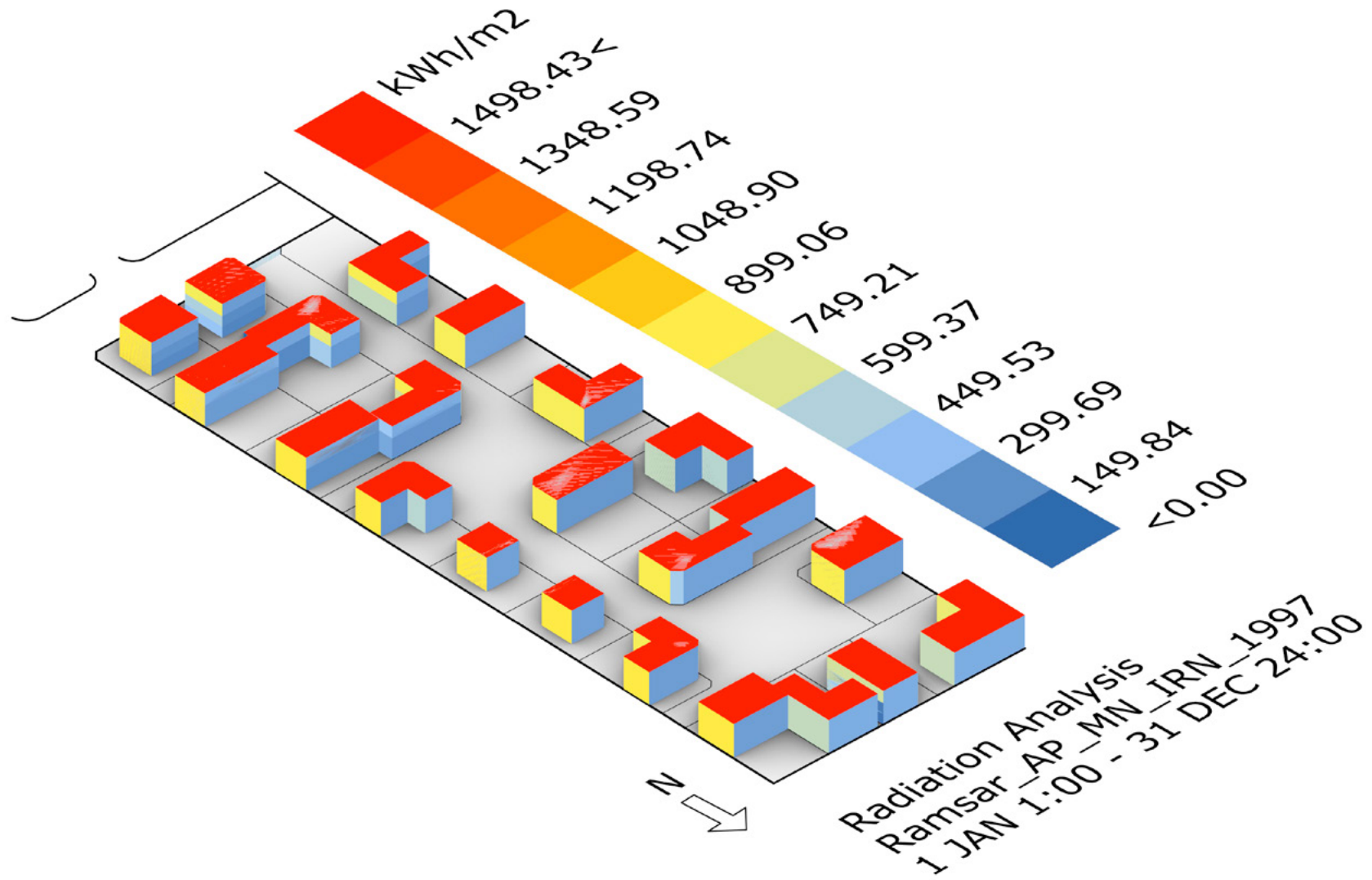
# Site Aanalysis

Sun



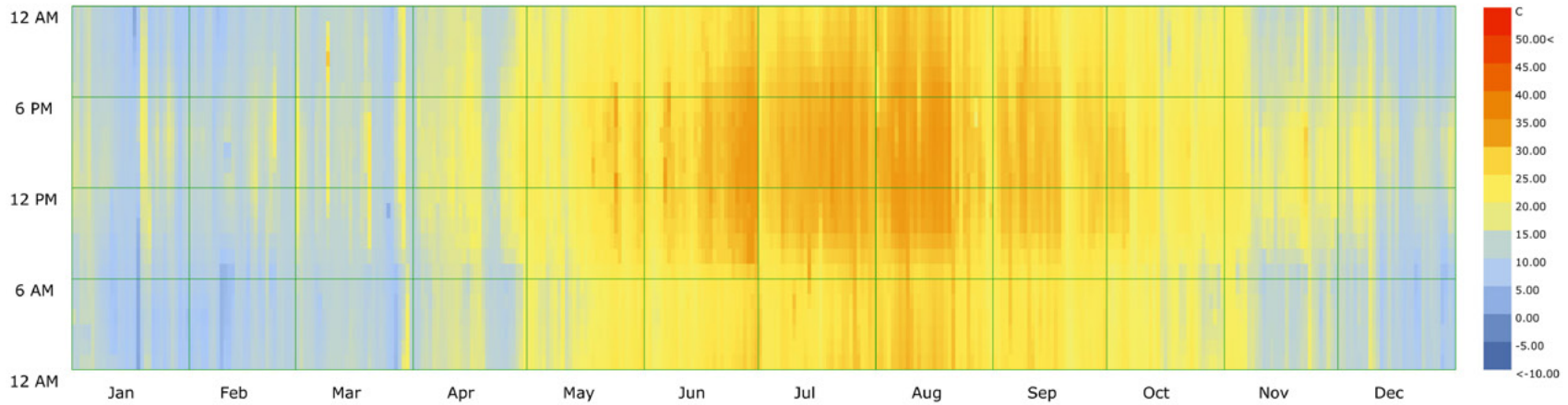
# Site Aanalysis

Sun

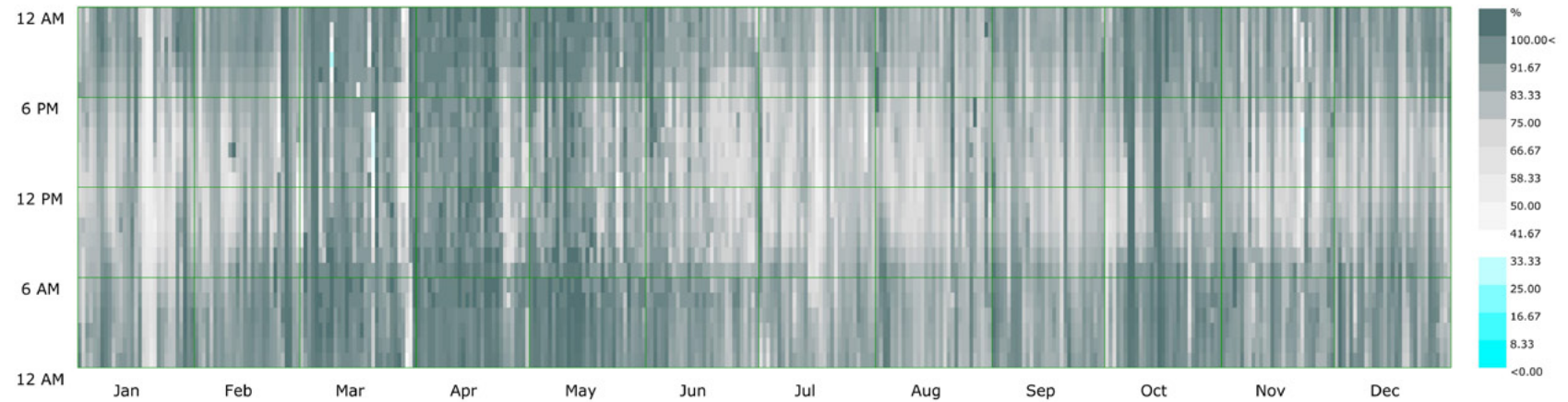


# Site Analysis

## Annual temperature and Humidity



Dry Bulb Temperature (C) - Hourly  
Ramsar.AP\_MN\_IRN  
1 JAN 1:00 - 31 DEC 24:00



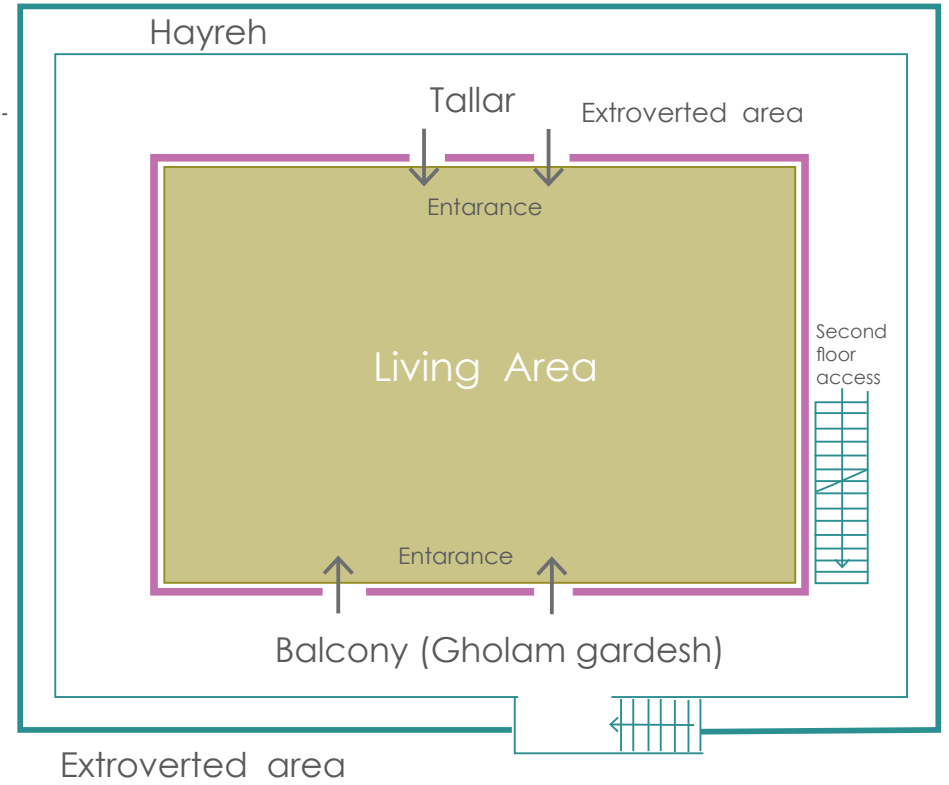
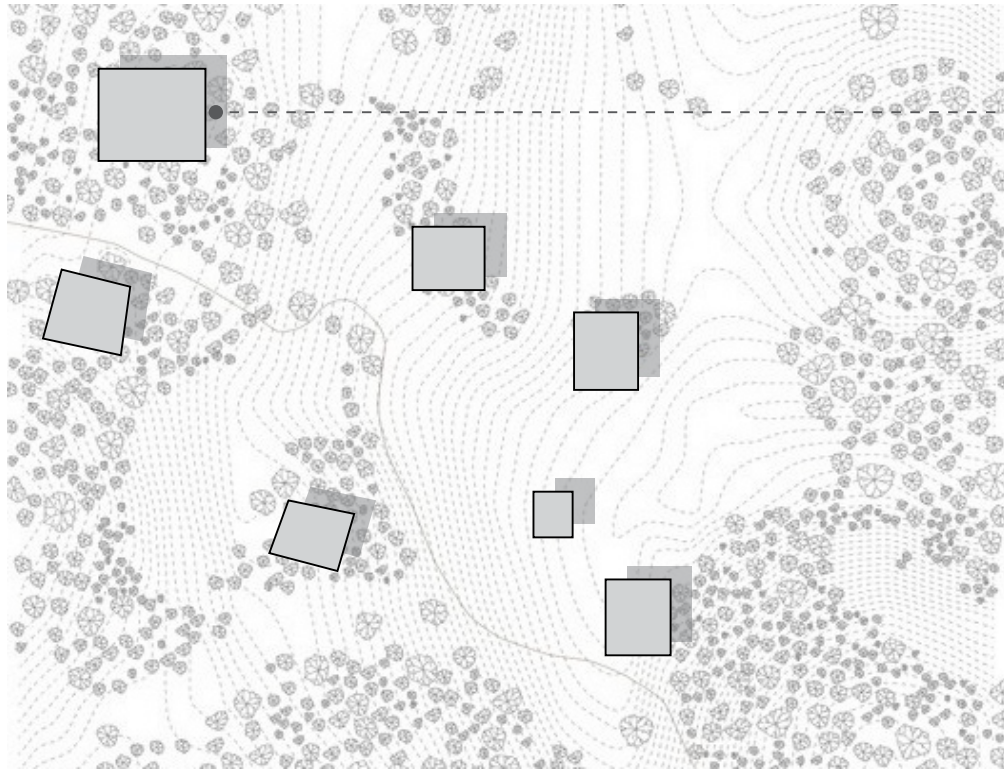
Relative Humidity (%) - Hourly  
Ramsar.AP\_MN\_IRN  
1 JAN 1:00 - 31 DEC 24:00

## House Typology In North of Iran



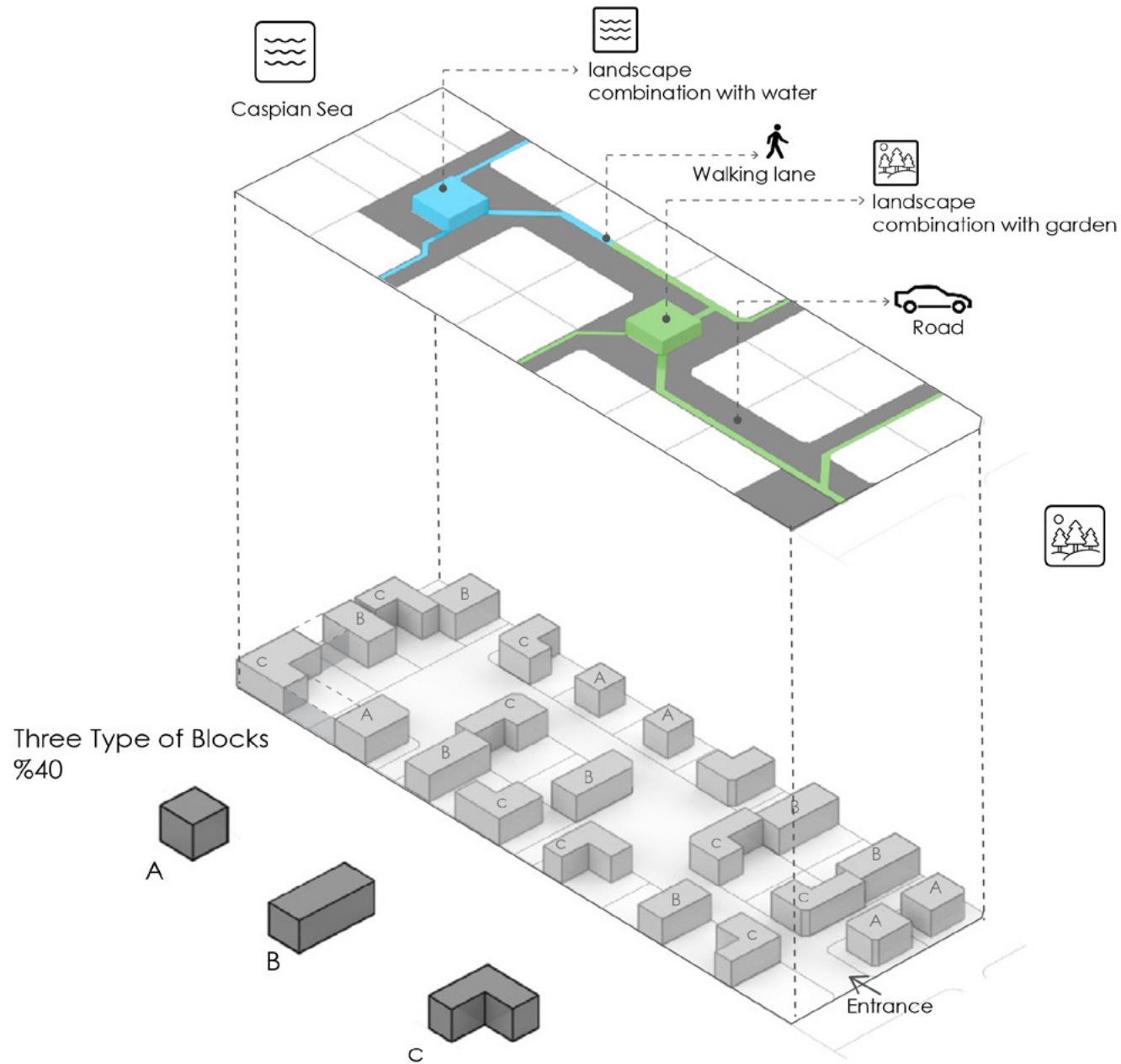


# House Typology In North of Iran



**Design**

# Landscape Design Idea



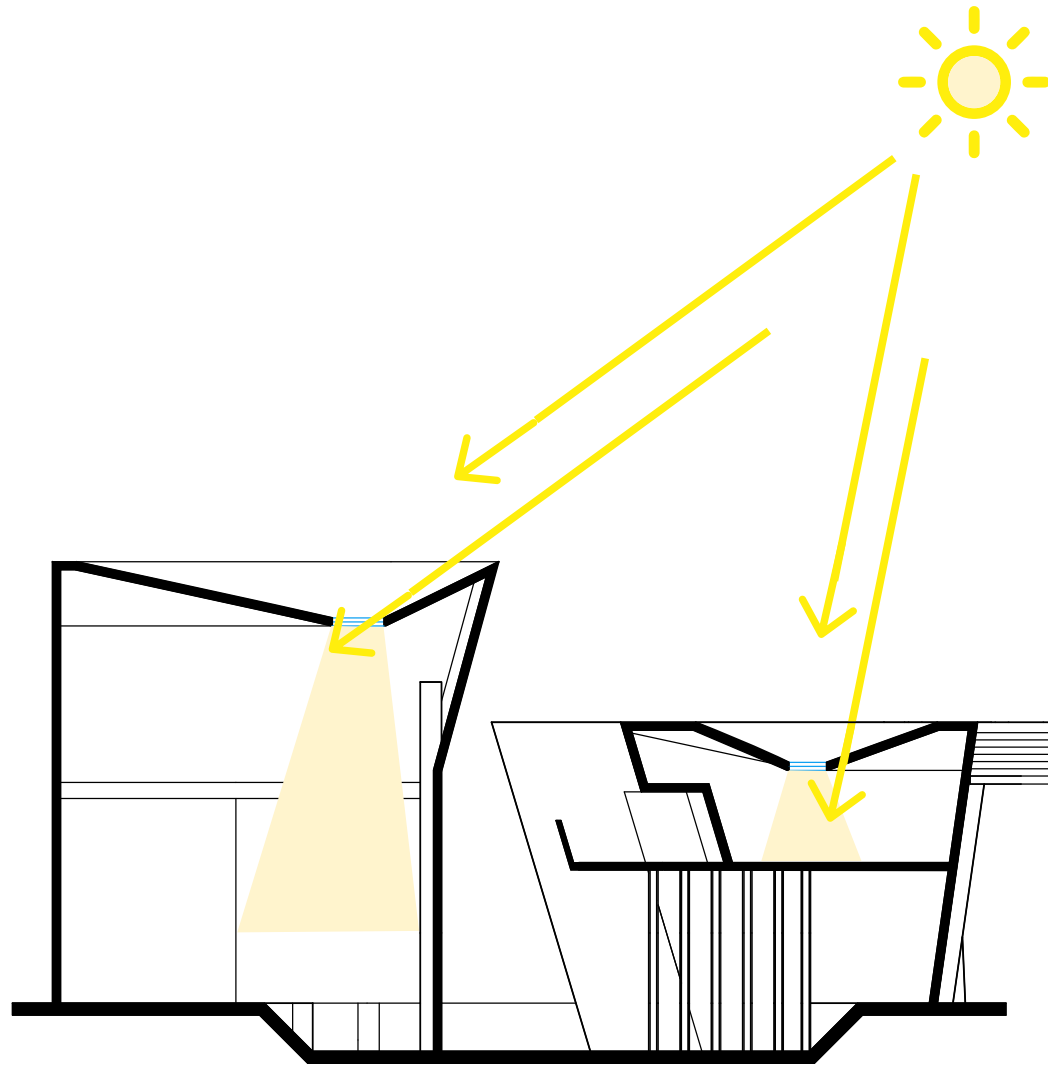








Alt 01  
Section







**Alt 02**



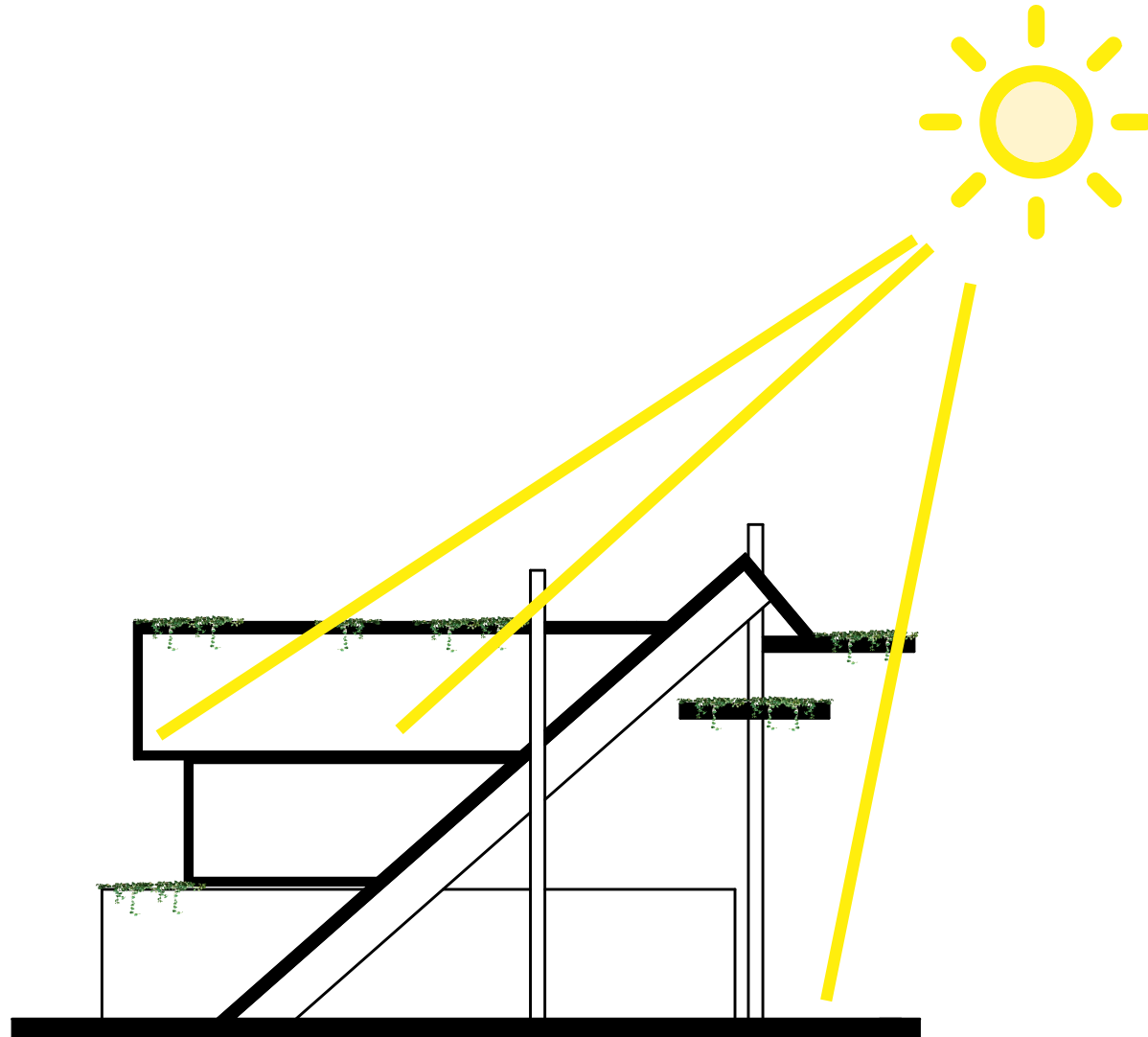








Alt 02  
Section







SADAF  
ALIKHANI  
Architect