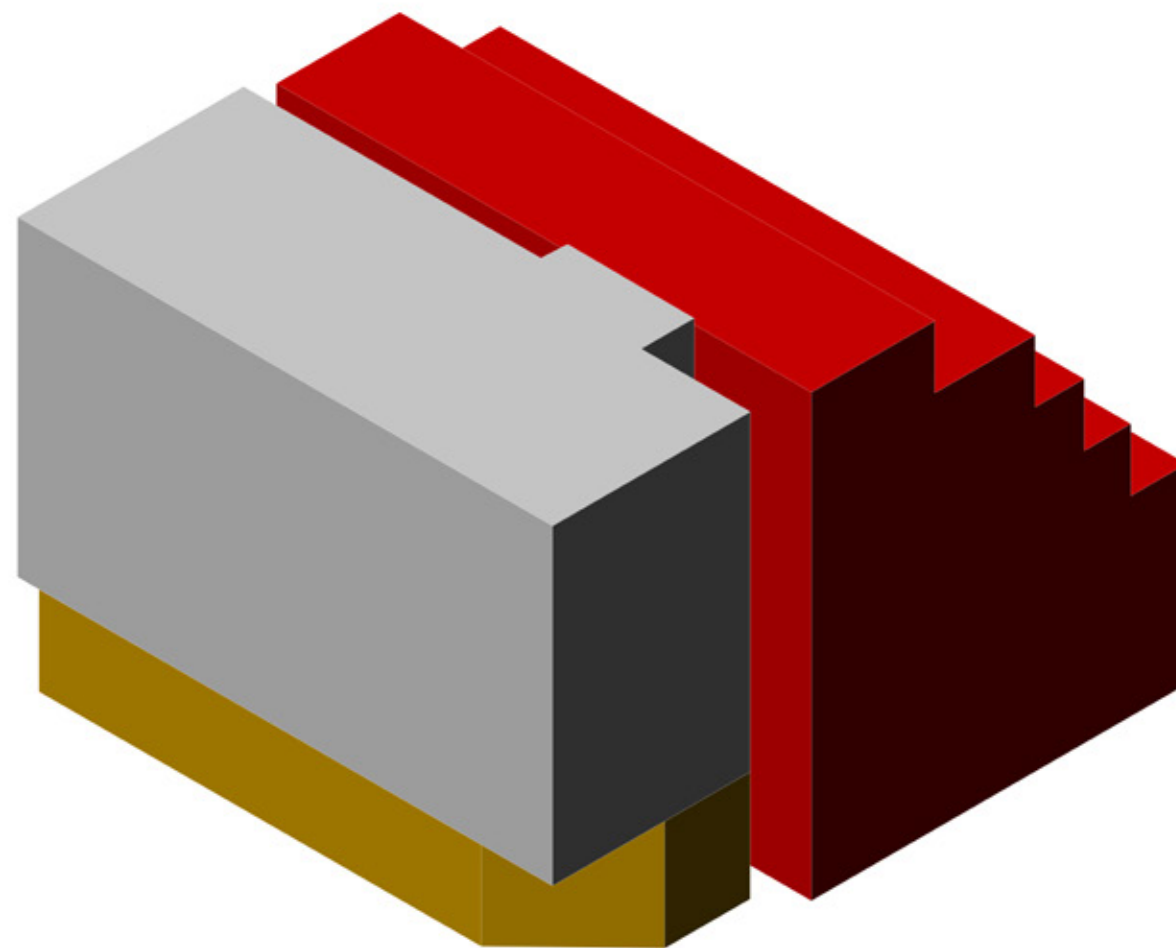
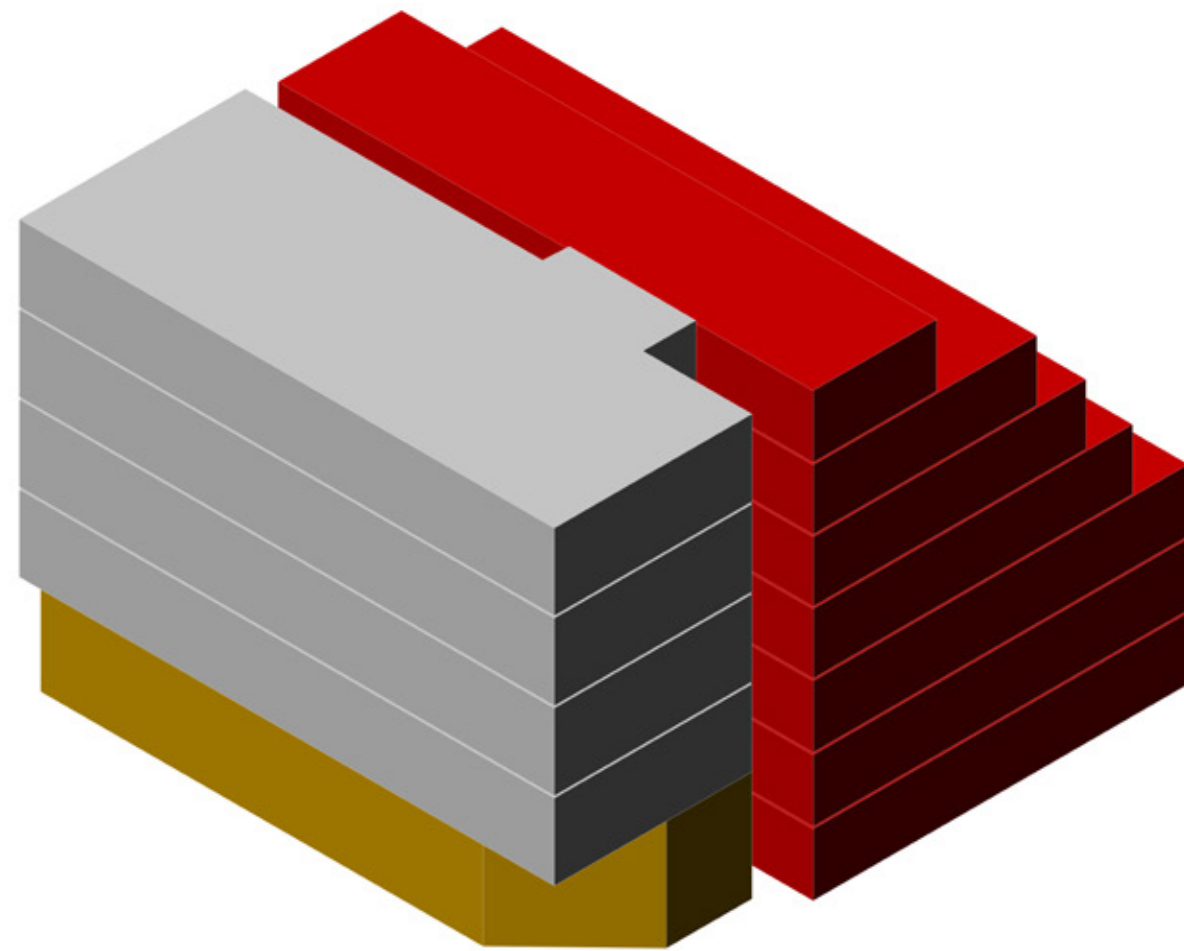


Royal Terrace

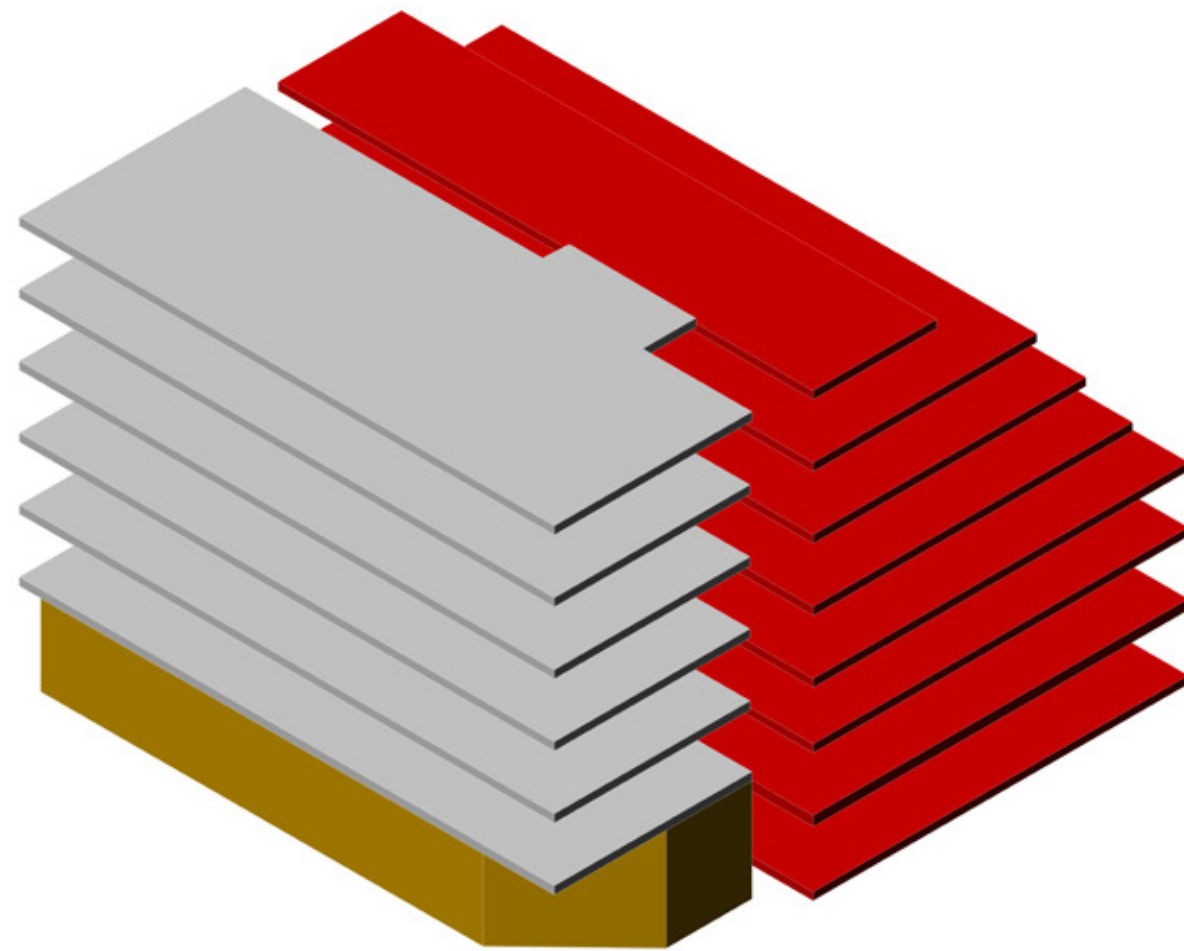
Diagram



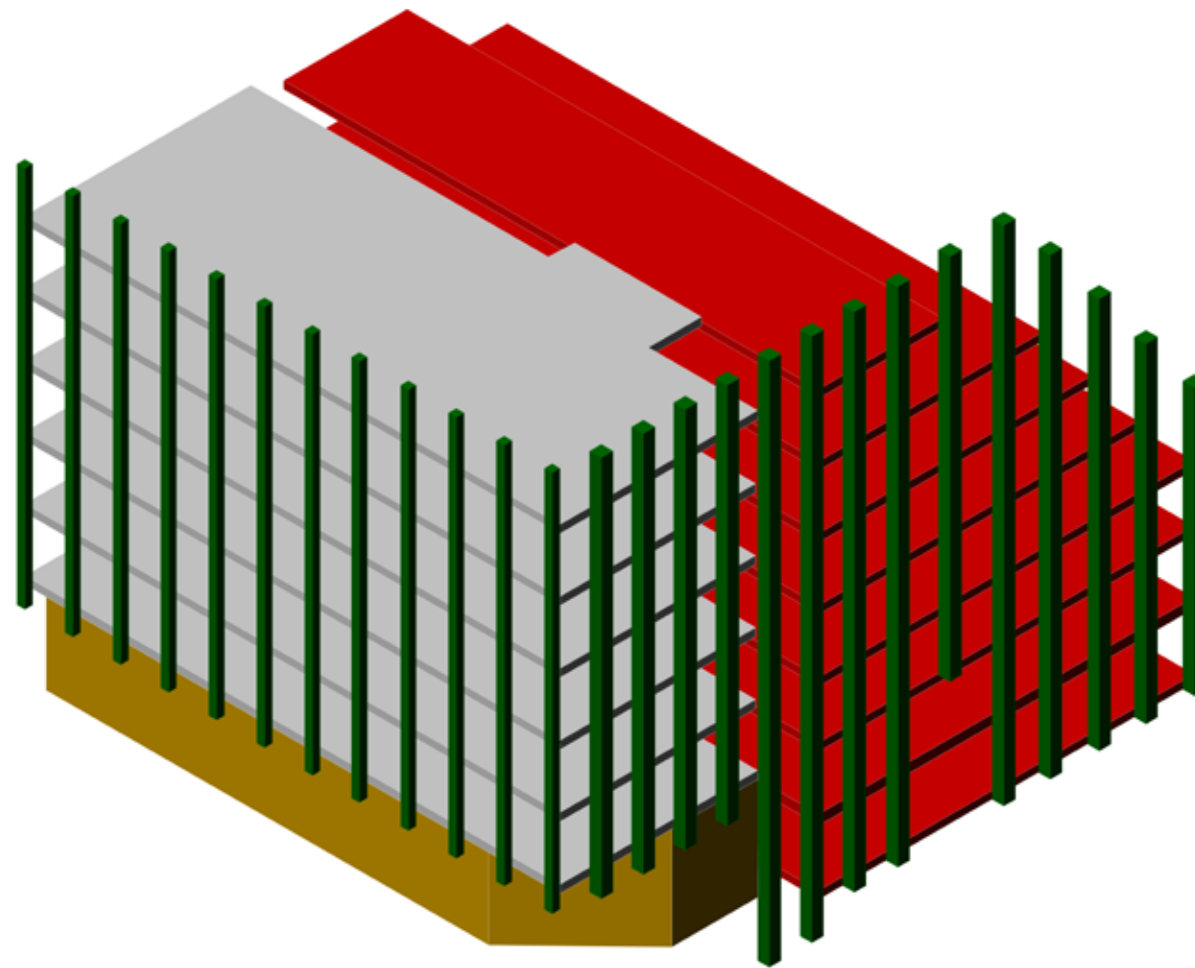
1 | Divide 3 box



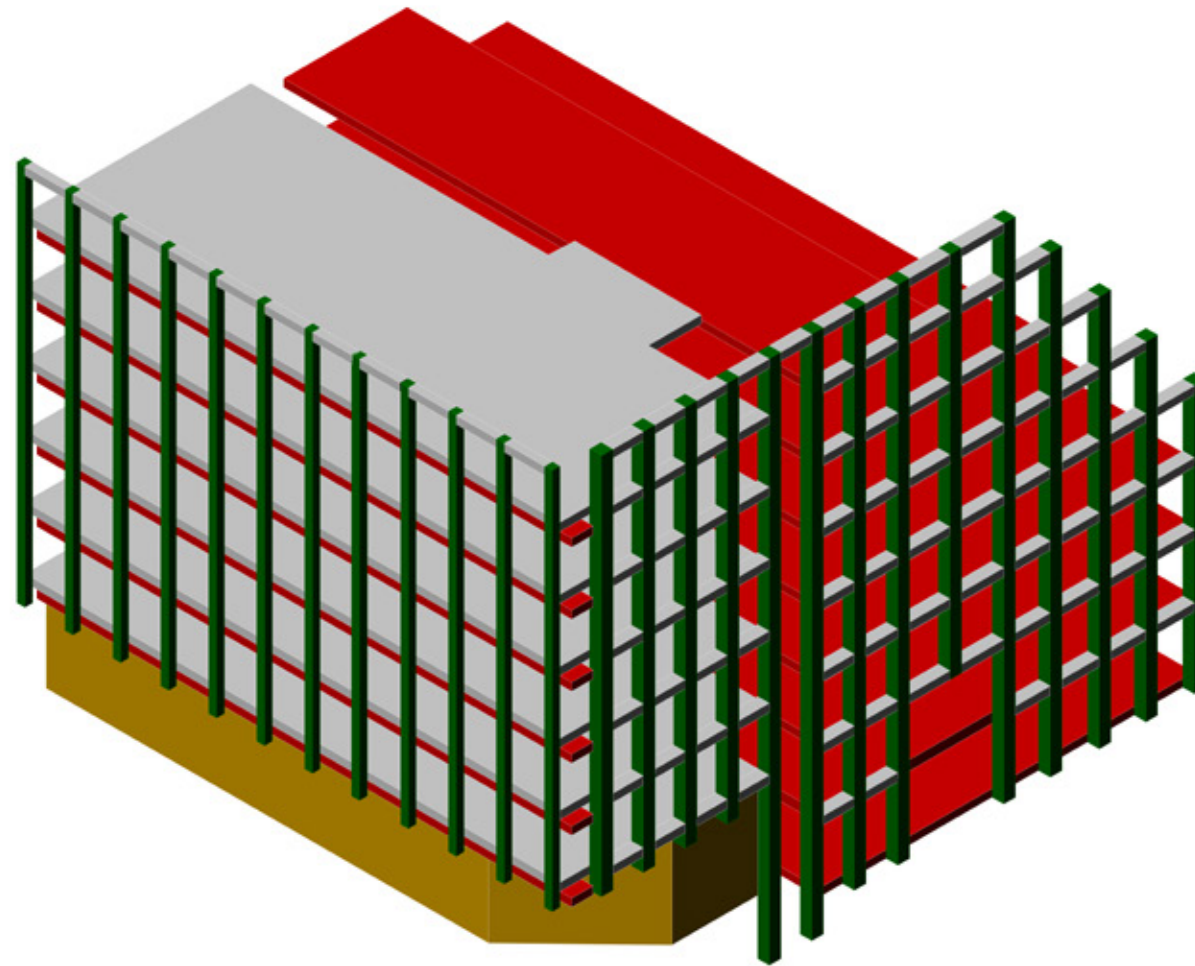
2 | Divide Slab



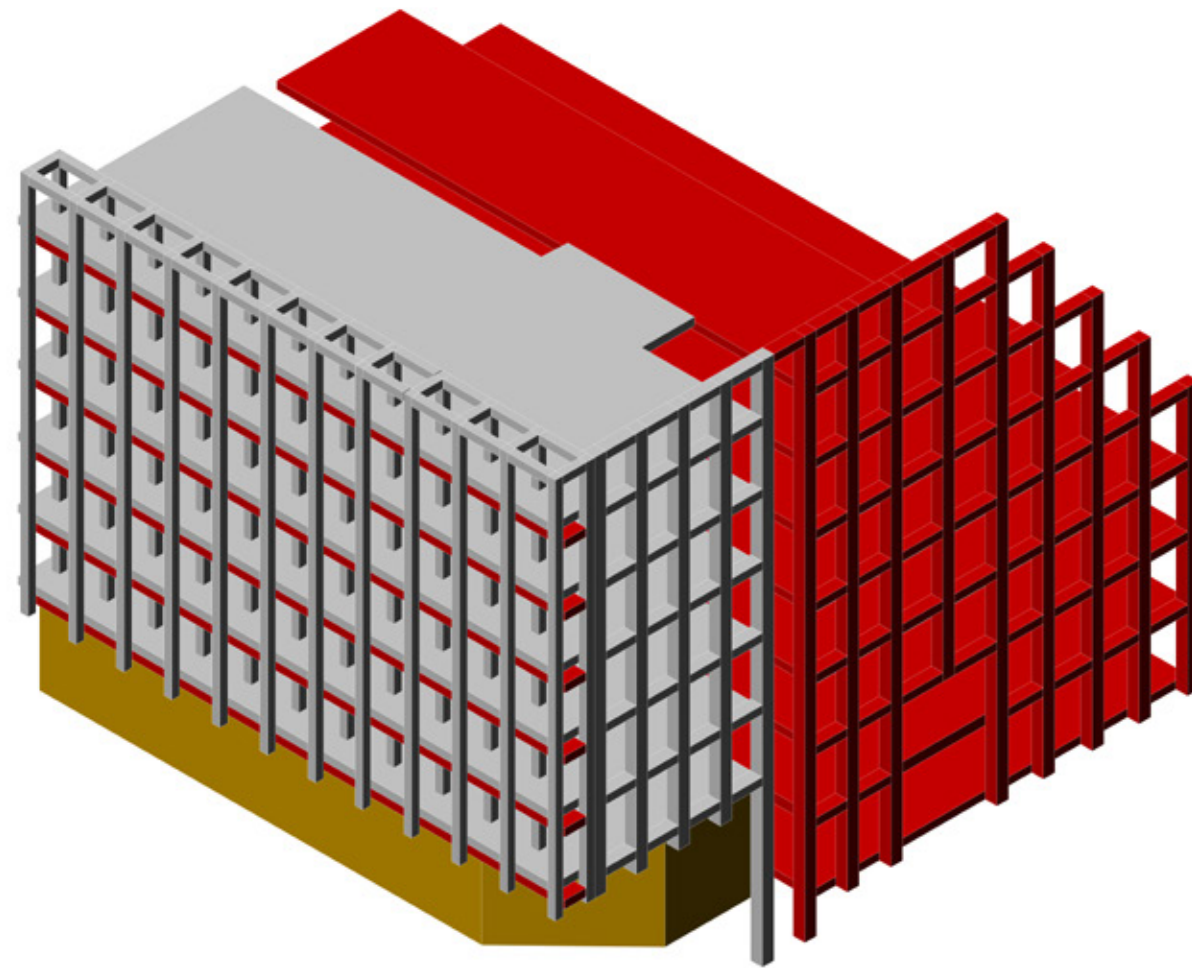
3 | Make Grid



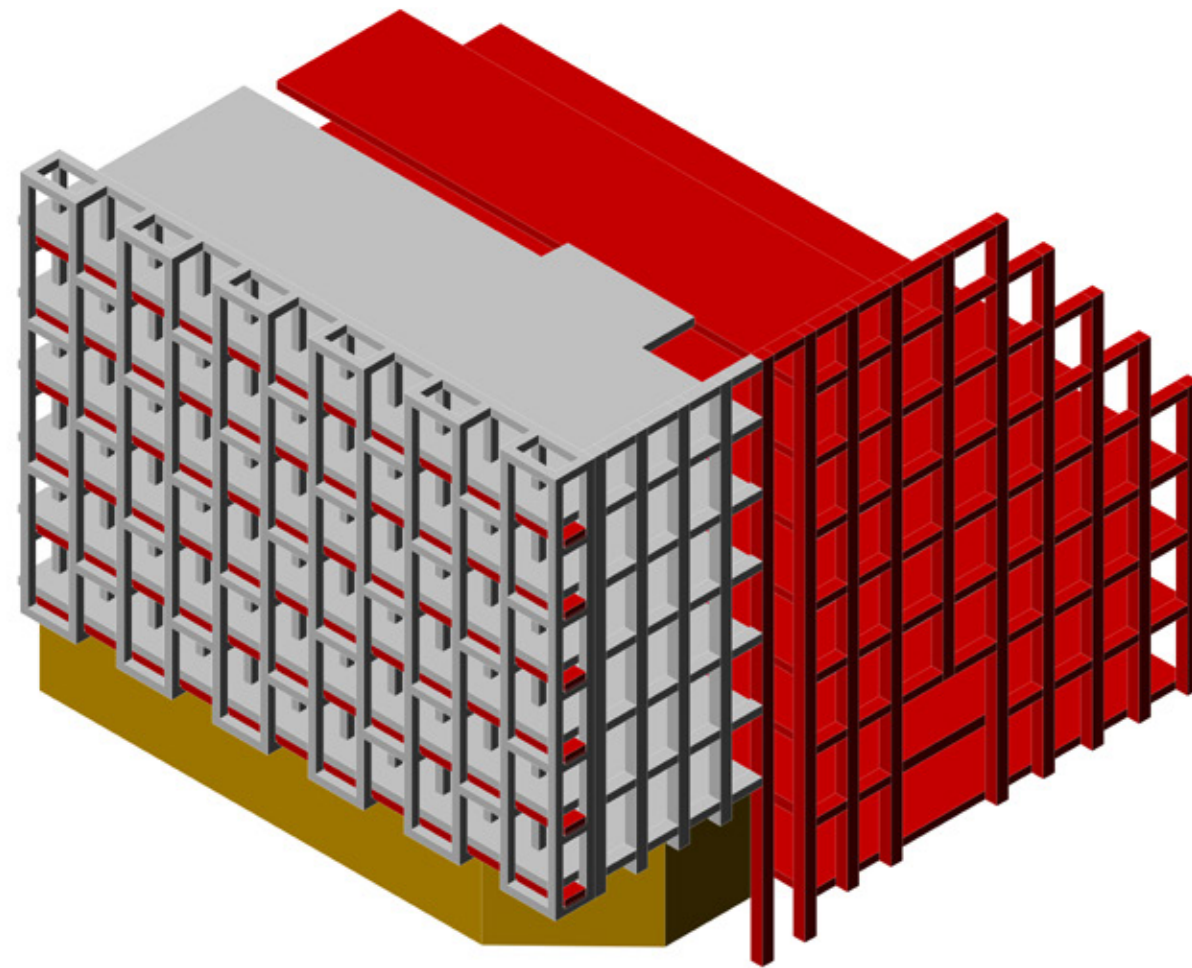
4 | Make Vertical Grid



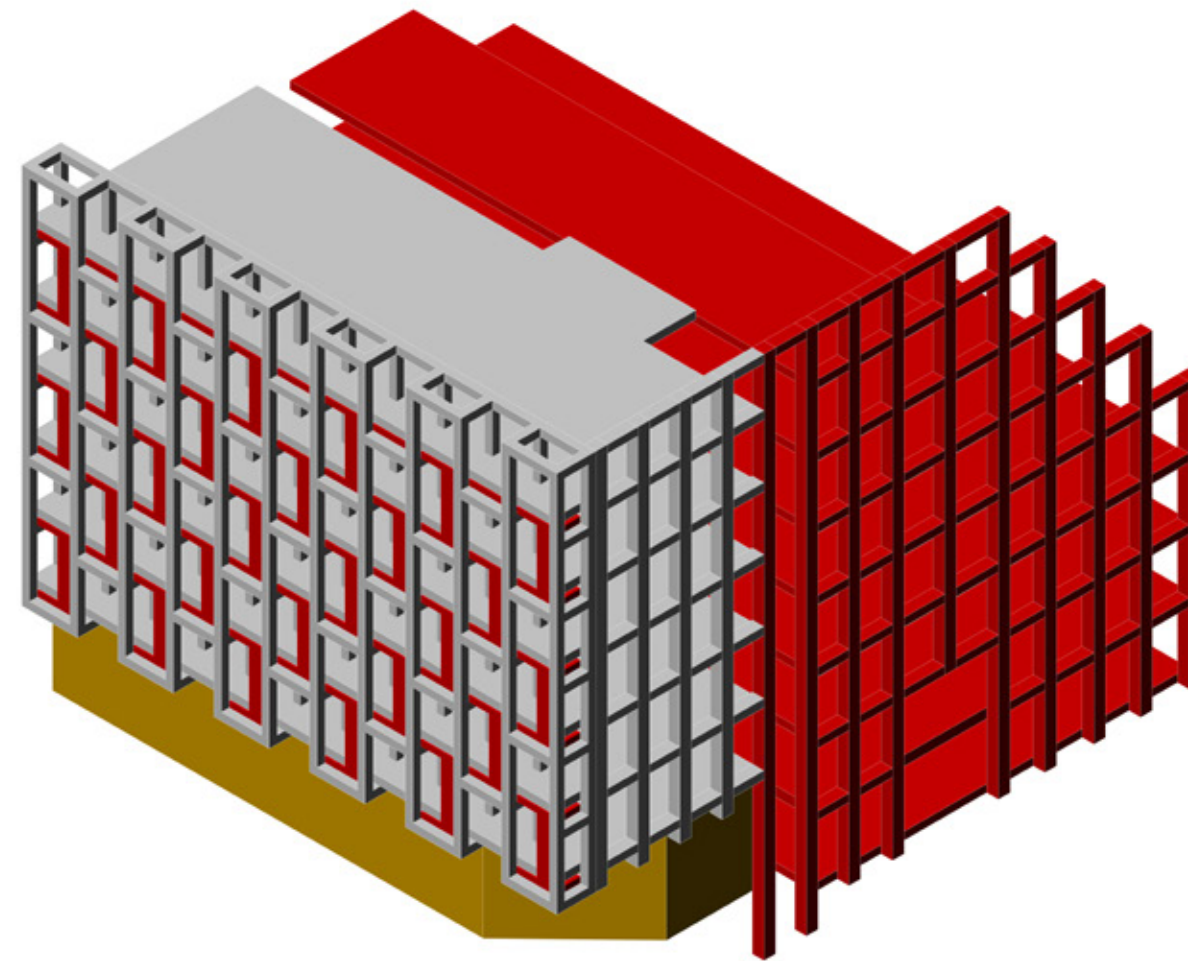
5 | Make Vertical Grid & Horizontal Grid



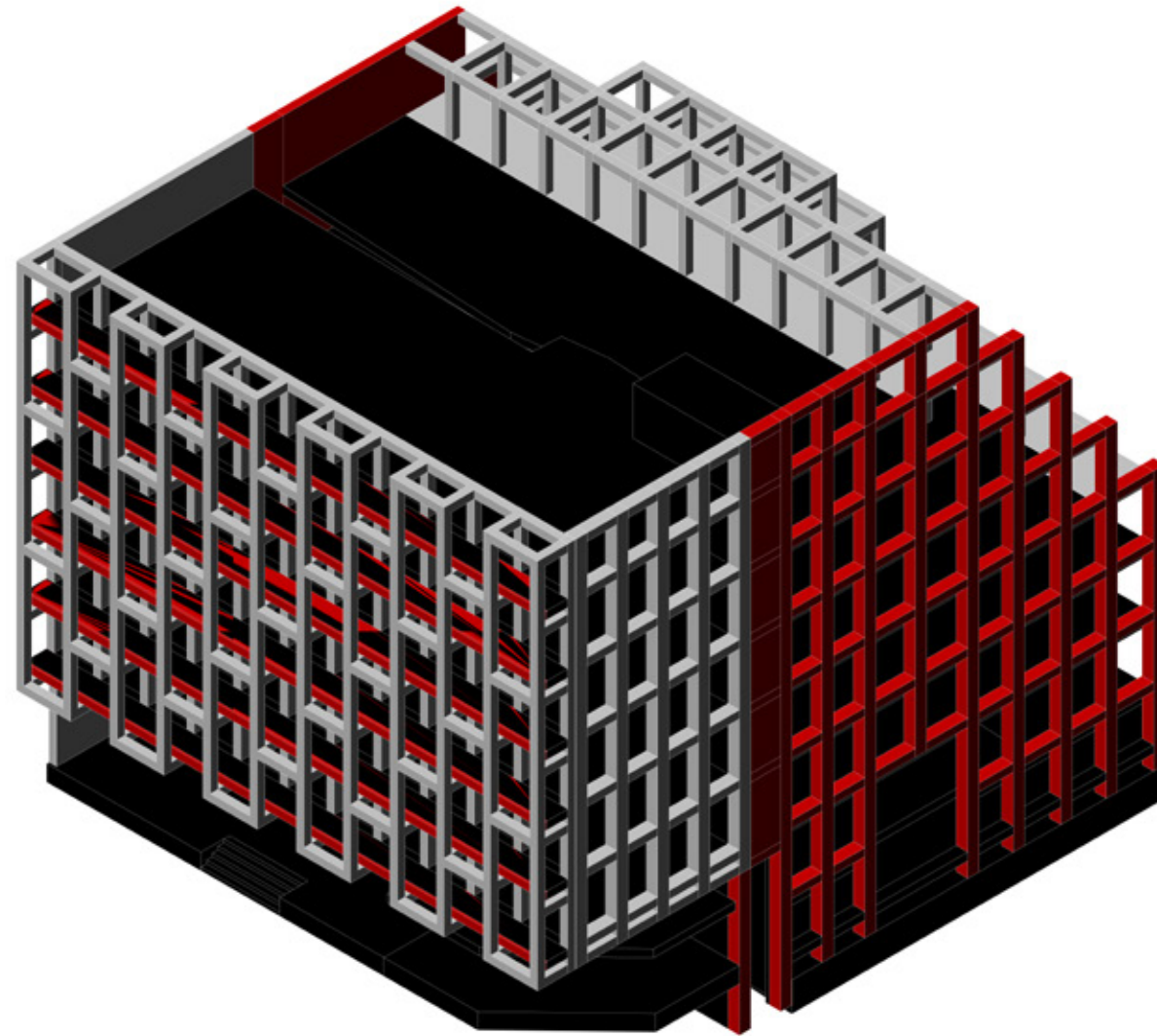
6 | Make Duplicate Grid



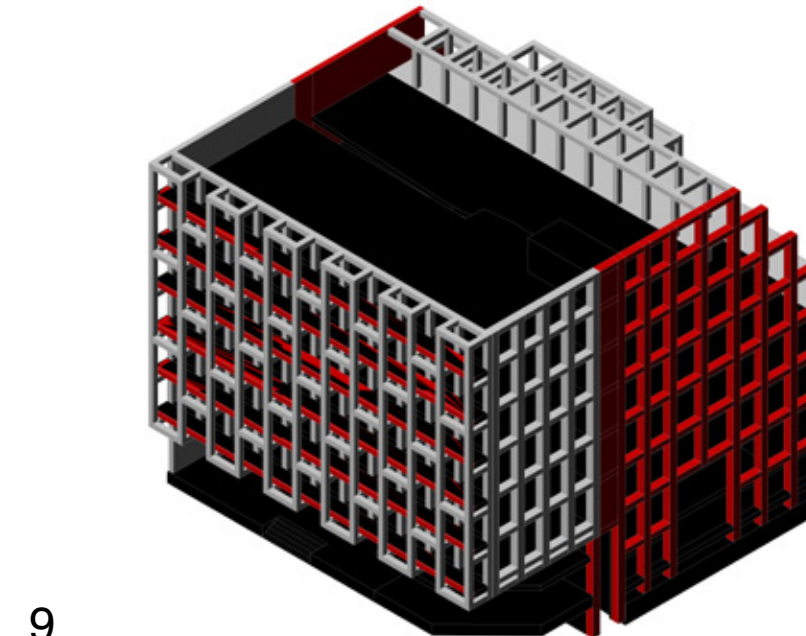
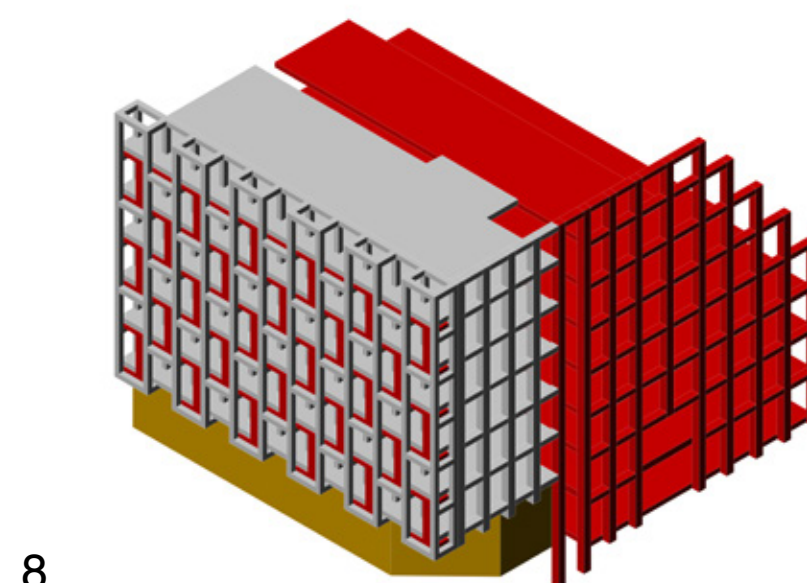
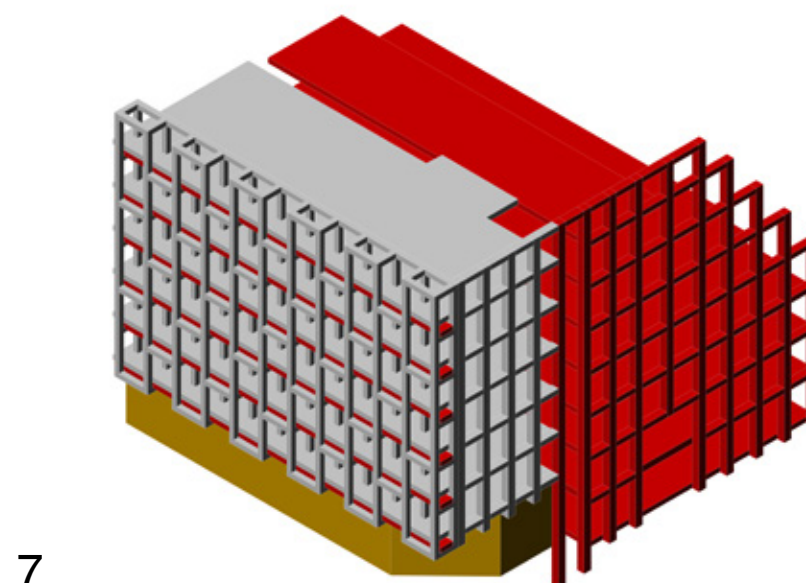
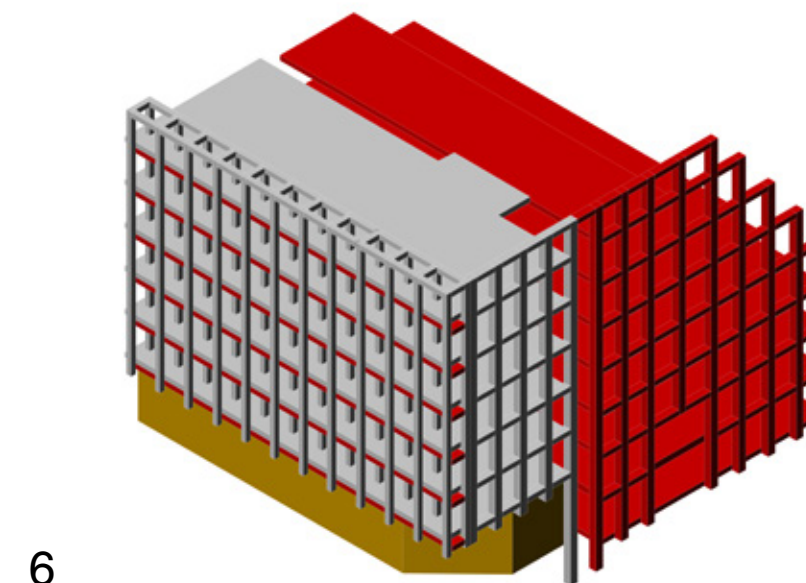
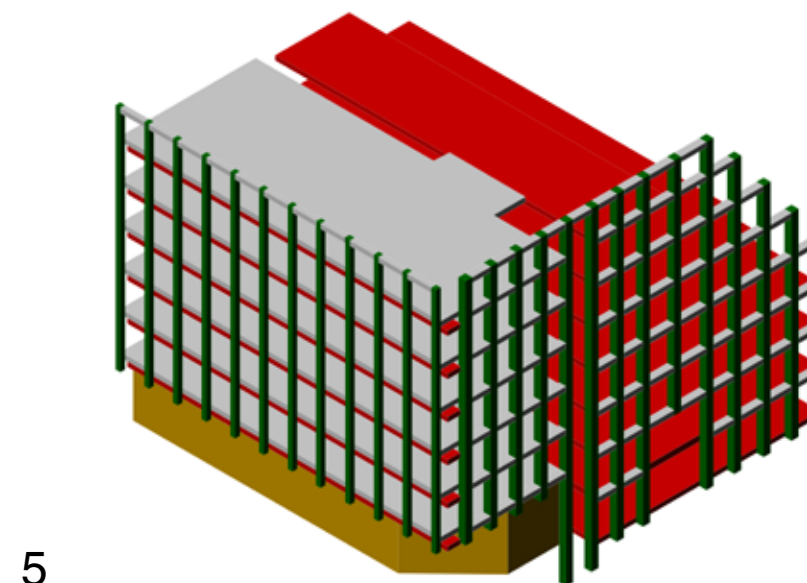
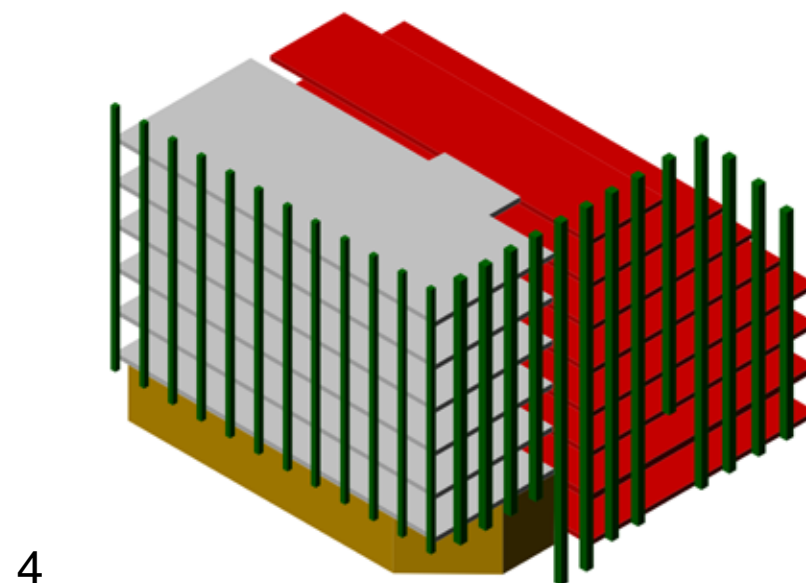
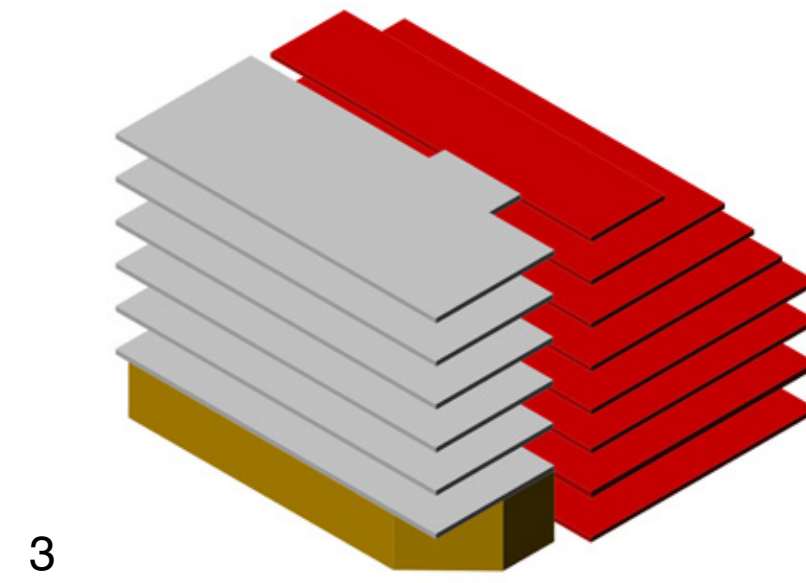
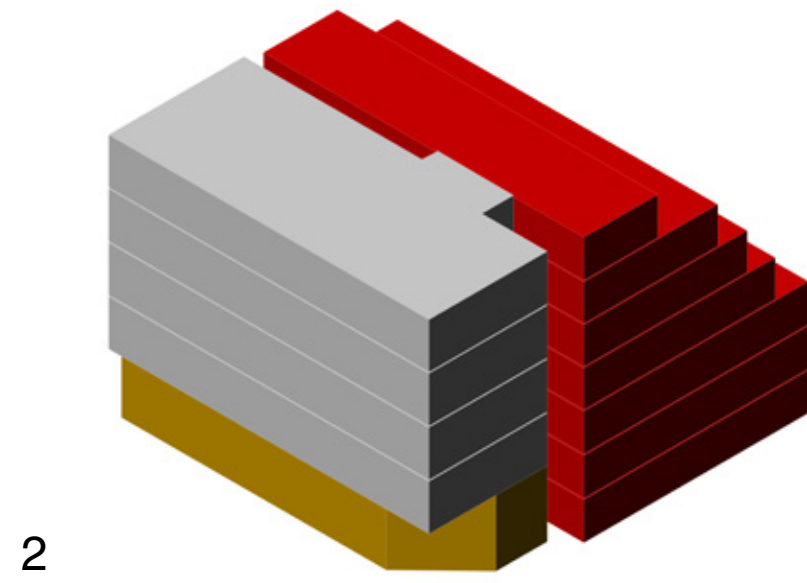
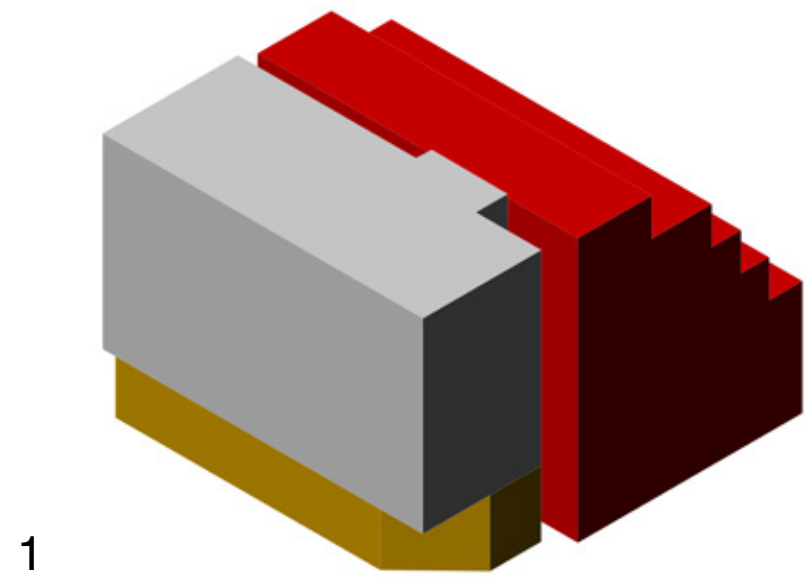
7 | Merg Grid



8 | Merg Grid & Make Surface



9 | Warp All Face of Building



image

Alt 1















Alt 2











Alt 3









Alt 4







Alt 5







Alt 6







Material | cost



Hand Made Brick | آجر دست ساز

Texture Cement Work | سیمان بافت دار

شماره	آیتم	به ازای هر متر مربع
۰۱	آجر دست ساز	۱/۰۰۰/۰۰۰
۰۲	سیمان بافت دار	۶۰۰/۰۰۰