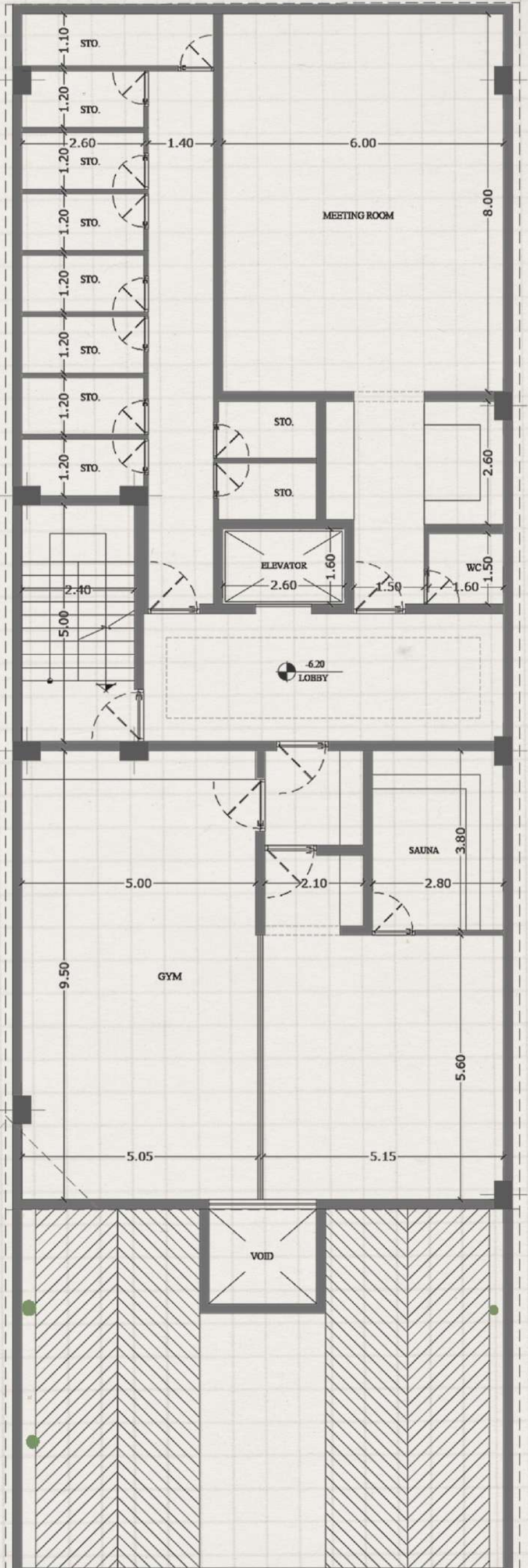
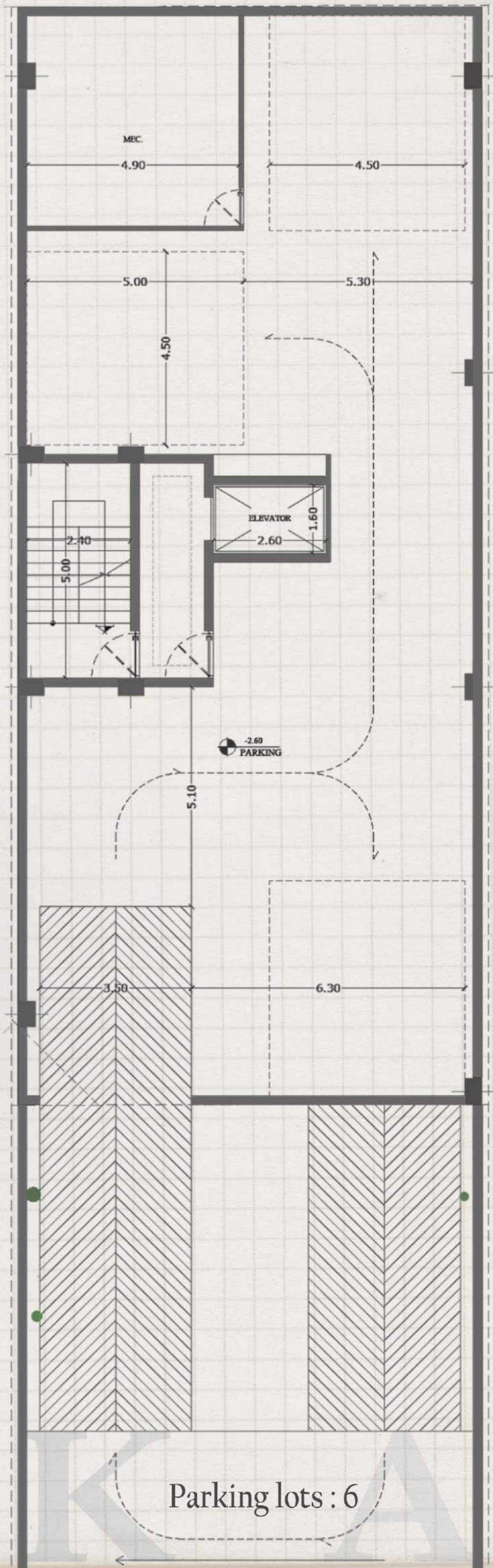
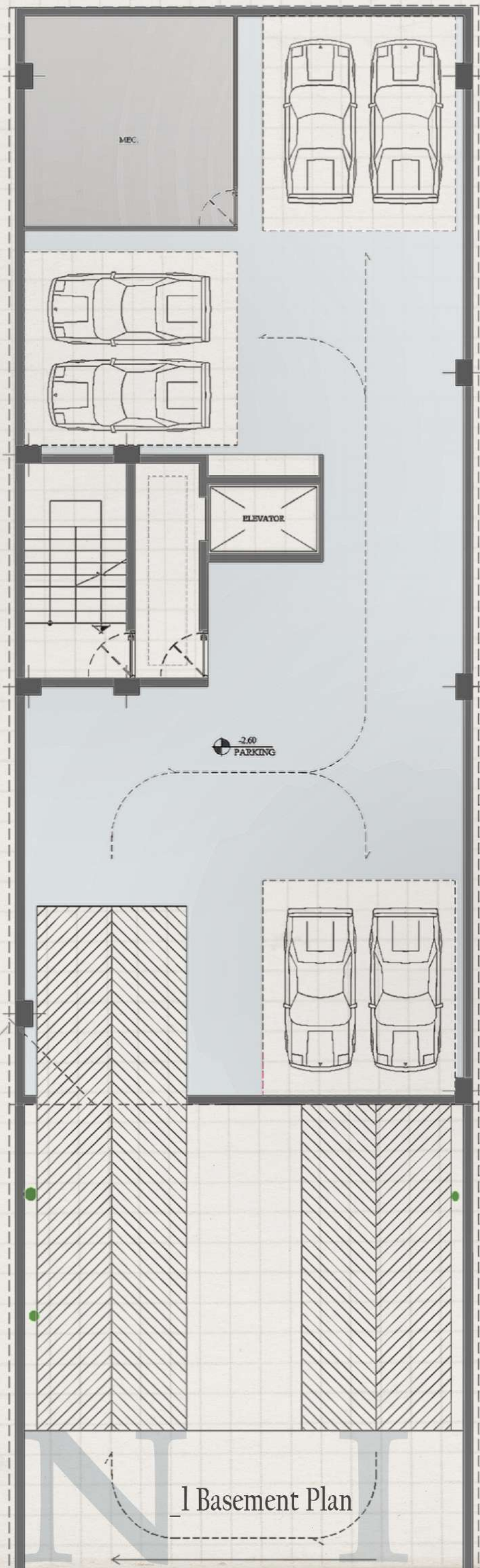


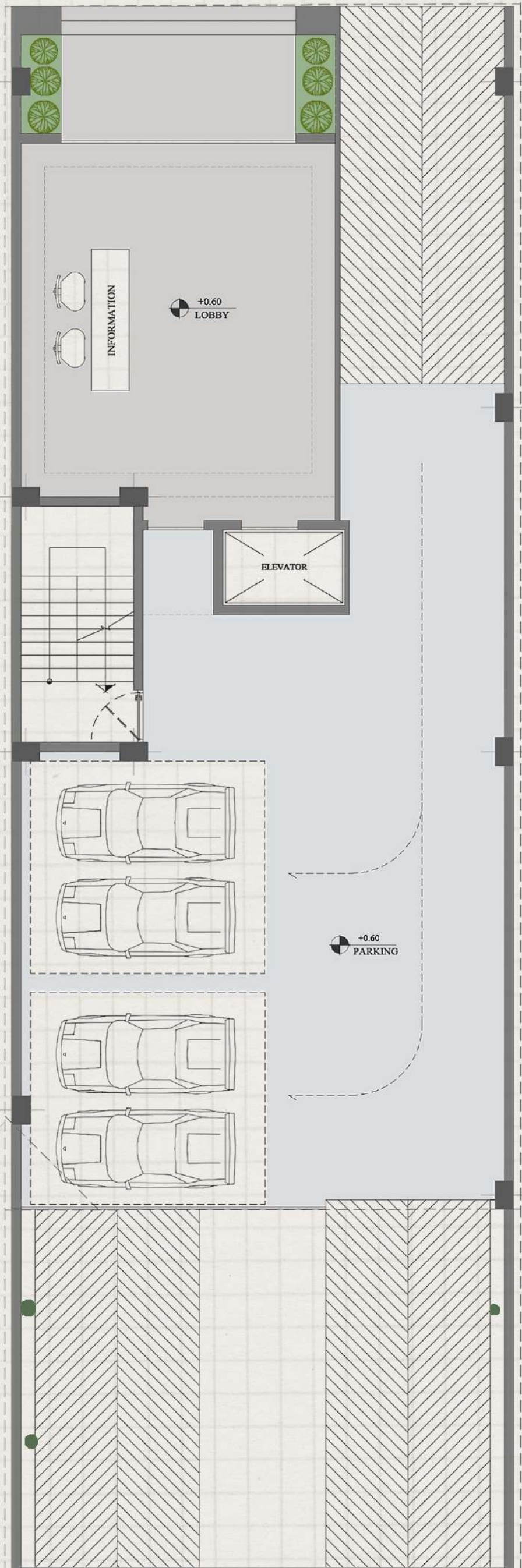
Cubic architecture is a modern-era architectural style that was commonly used at the end of the 1900s and into the early 2000s, but has a history that dates to the 1700s in Rotterdam, The Netherlands. Pictured below, the 28 innovative cube houses were built on Overblaak Street above the Blaak Subway Station by architect Piet Blom in 1967. Blom based the design of the homes on the concept of living as an urban roof – offering high density housing that offered enough space on the ground level. Related image Most cubic homes have an average of two stories and are currently gaining in new construction popularity once again, often in the tiny home segment because they are such efficient spaces. But cubic homes are also still popular in the luxury home market where modern building design always has a strong following. Unusual home-building materials including a mix of glass, steel and wood are often used to highlight the building's basic geometric shapes to create a unique appearance, no matter the size the of the home. Sharp, clean lines are also a prominent feature that can be further accentuated with a colour pallet comprising one dominant colour along with one or two complimentary colours. Asymmetrical balance, combined with unity in characteristics, such as colour and material as just mentioned, also distinguish exceptional cubic design from the ordinary. In the luxury market cubic architecture houses are often sprawling buildings with plenty of space for living and entertaining. But when it comes to tiny living, this design is most popular because the compact spaces are simple and able to provide all of the necessities of a home. Many pre-fabricated models are available and can look just as sharp on a small urban lot as on a rocky lakeside property where a cube design can offer exceptional views and an interesting juxtaposition between the property's natural beauty and the home's modern, industrial design.

NI KA

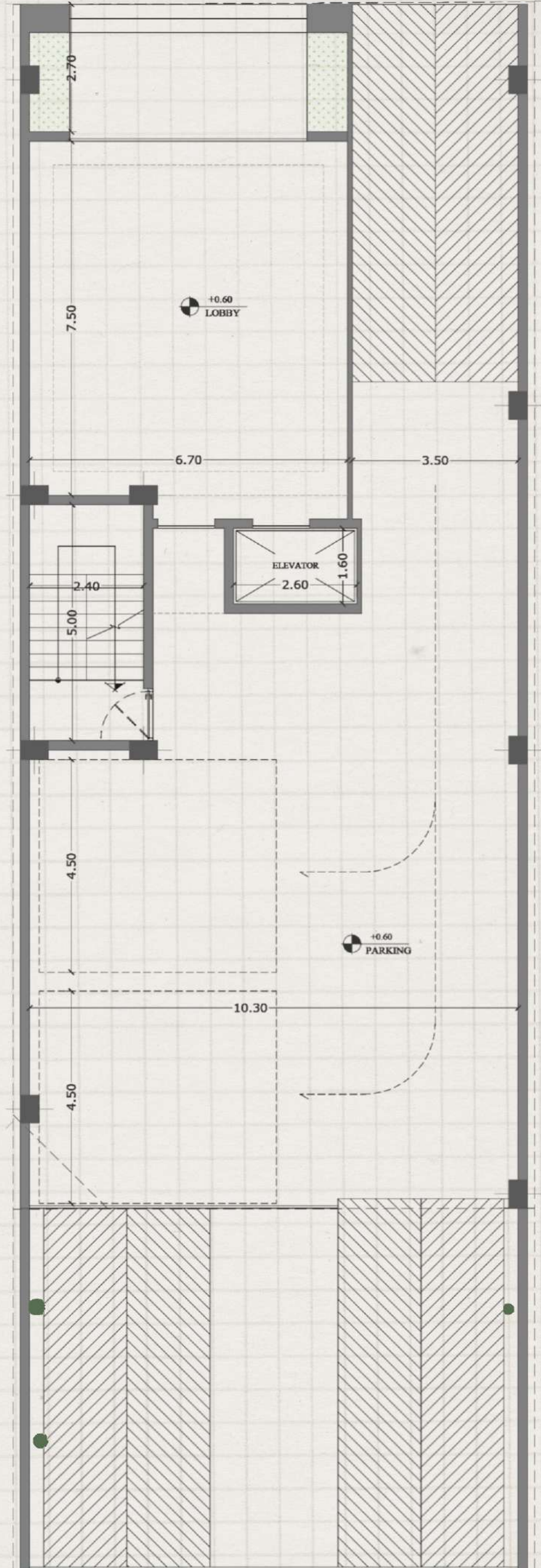


2 Basement Plan





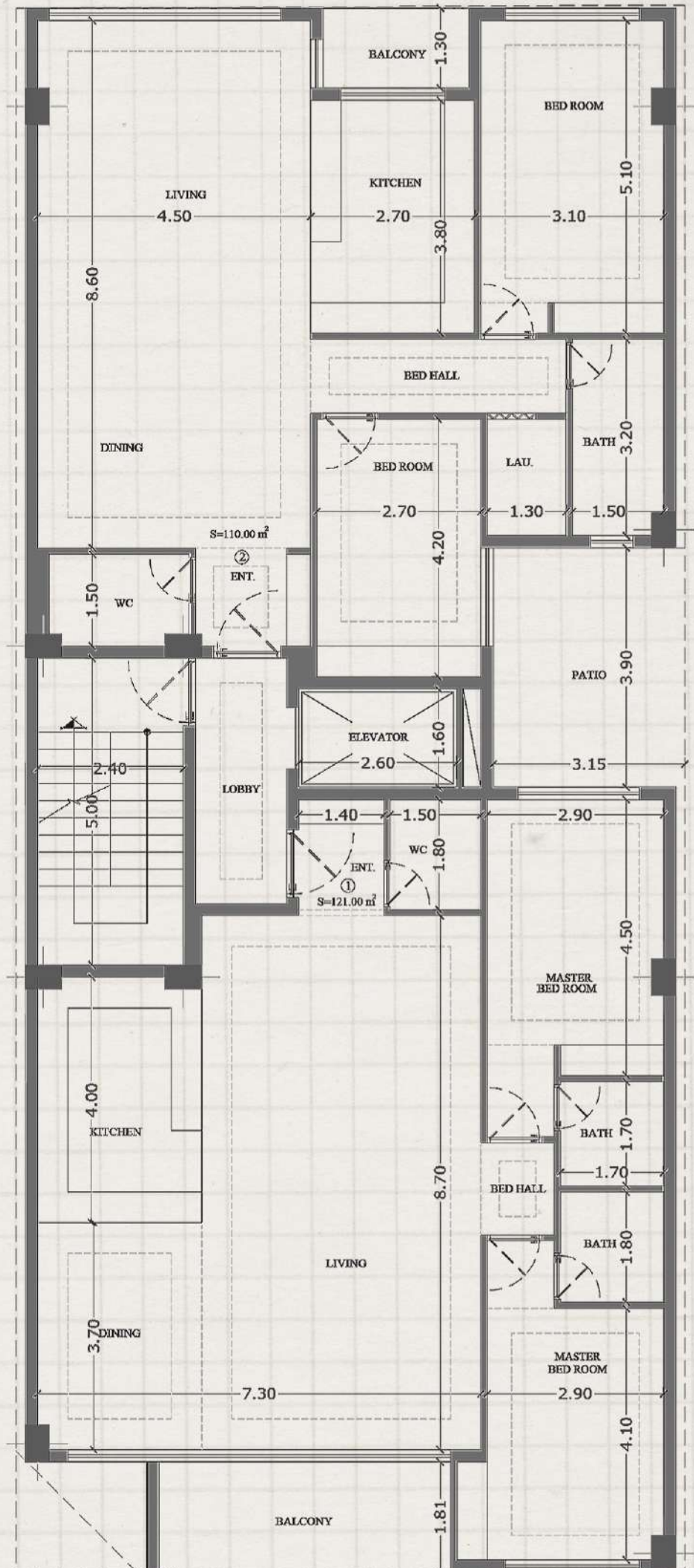
GR. Floor Plan



Parking lots : 4



1st. Floor Plan



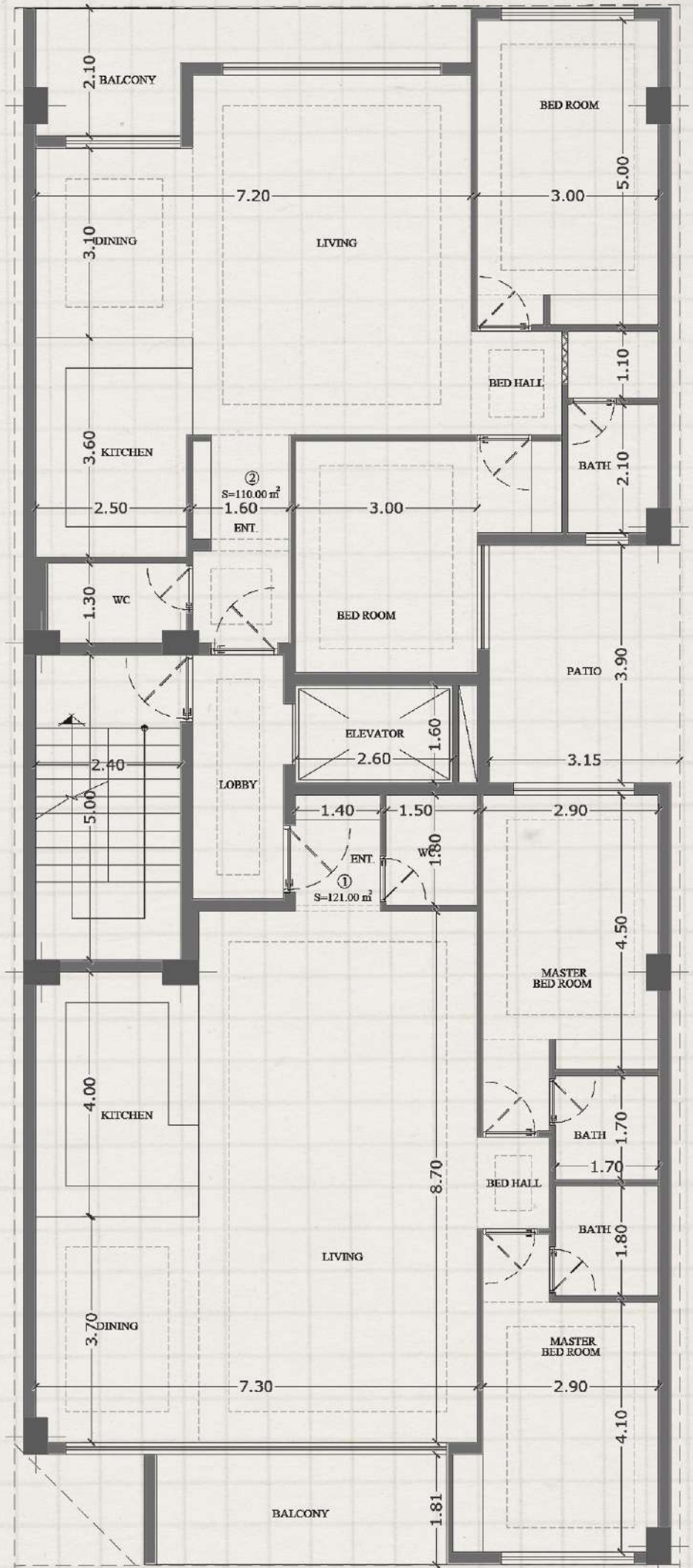
Unit 1 : 121.00m²
Unit 2 : 110.00m²

N I

K A



2nd . Floor Plan



Unit 1 : 121.00m²
Unit 2 : 110.00m²

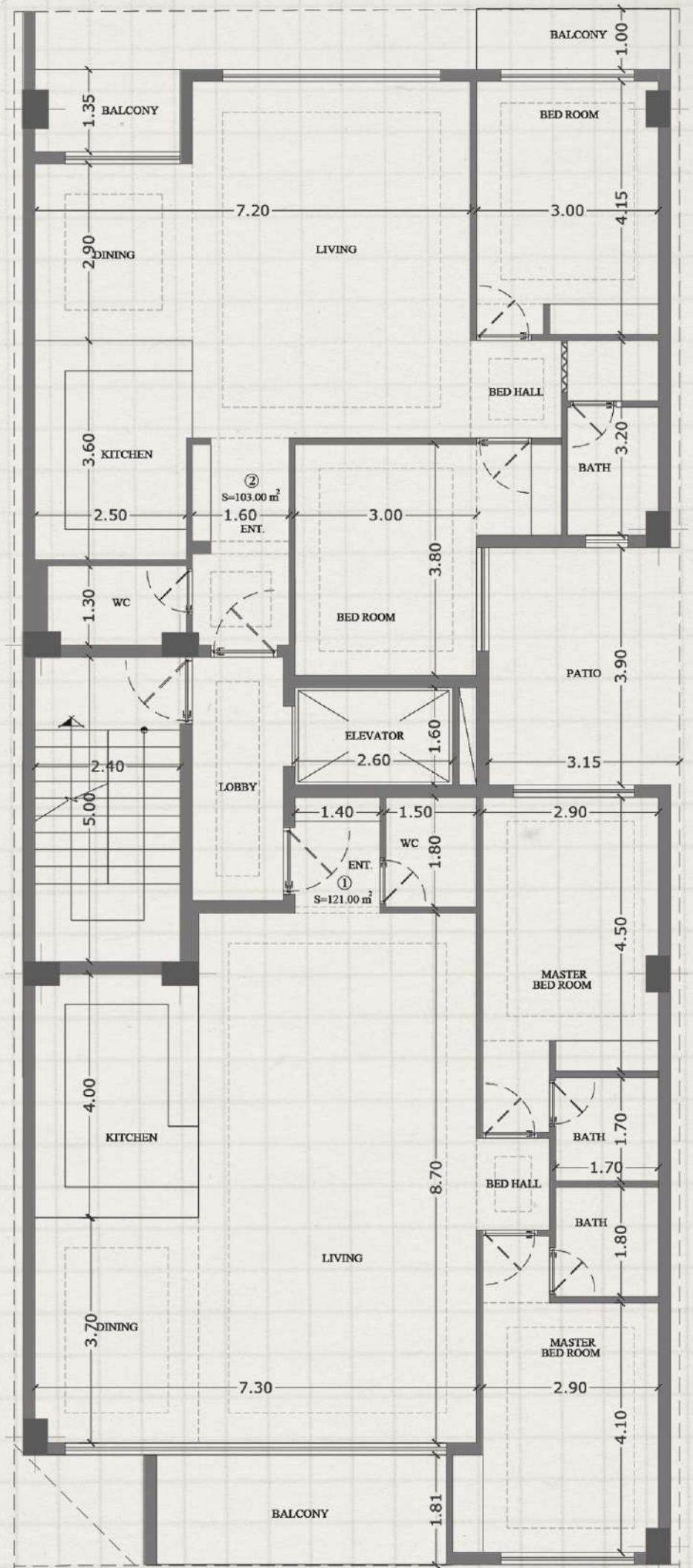
N I

K A



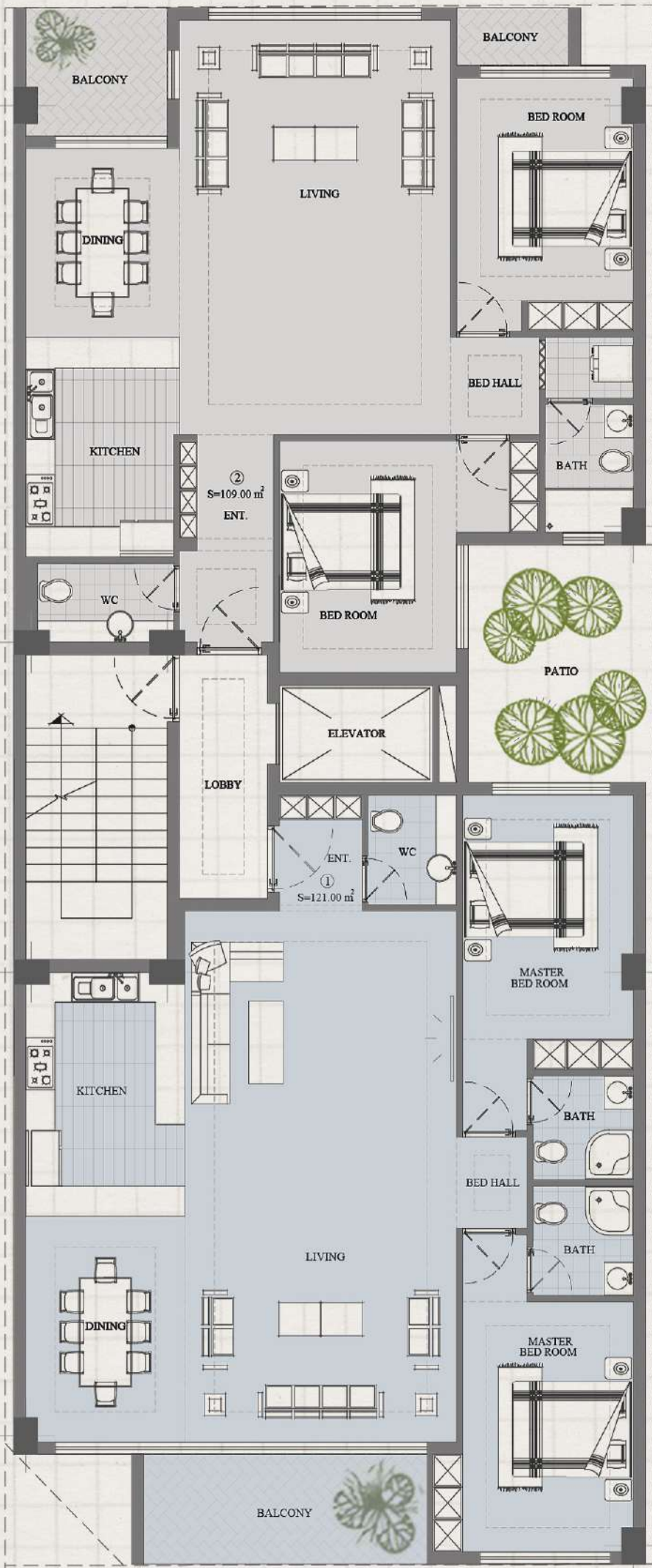
3rd. Floor Plan

N I

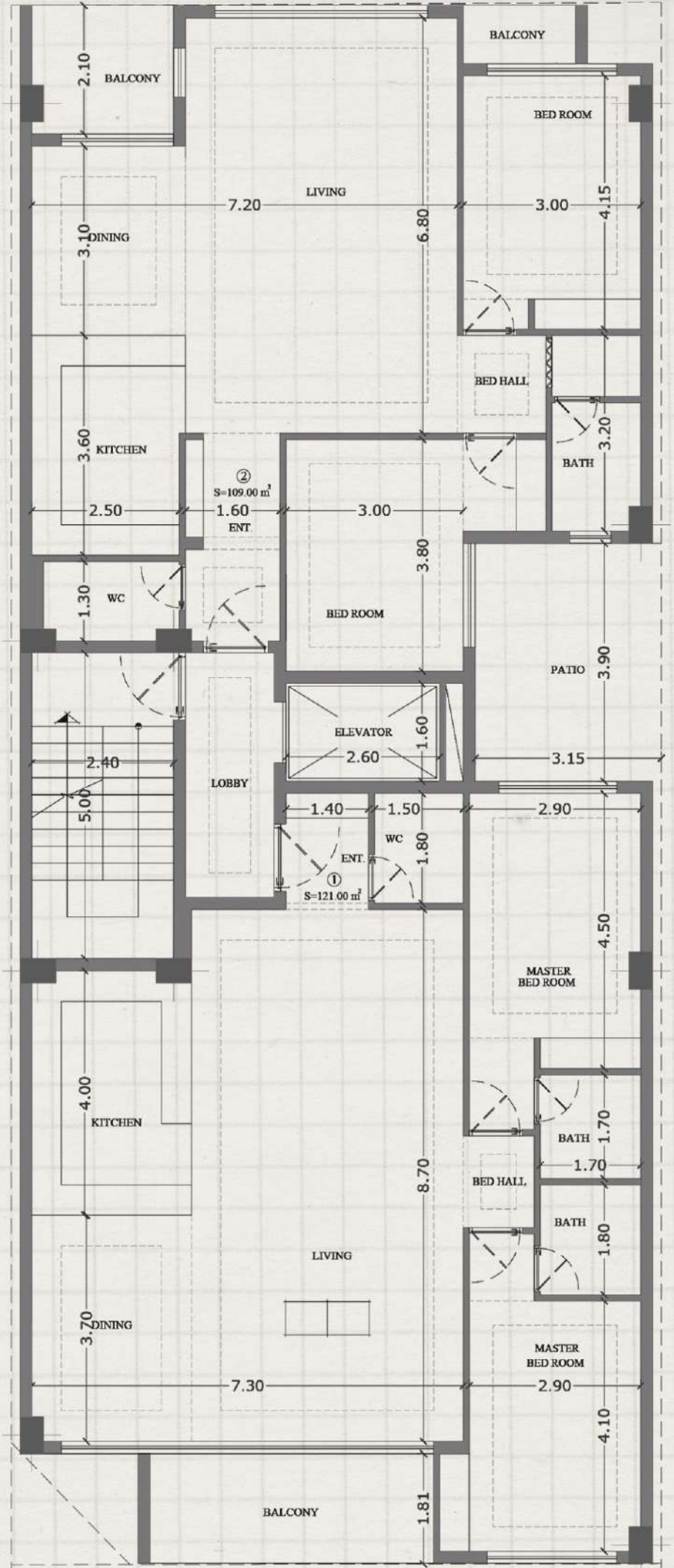


Unit 1 : 121.00m²
Unit 2 : 103.00m²

K A



4th. Floor Plan



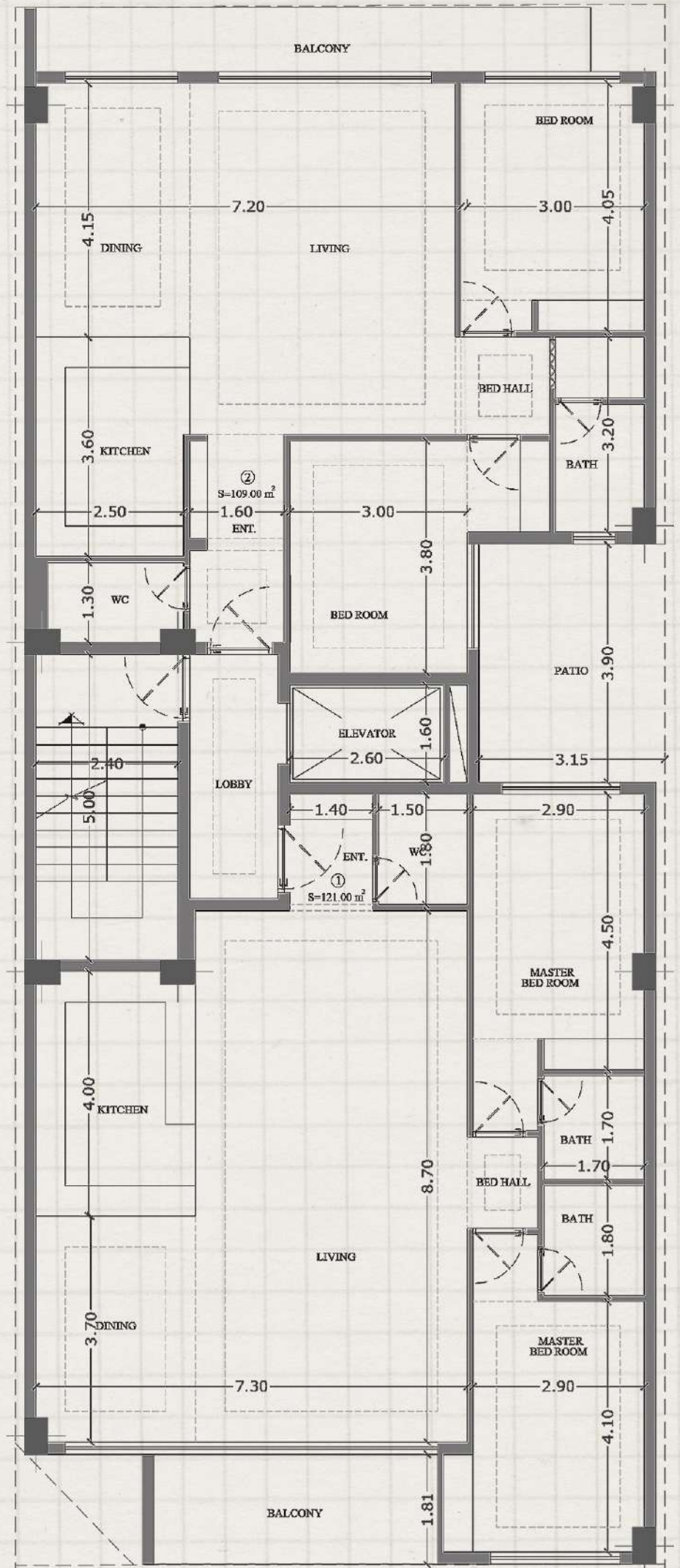
Unit 1 : 121.00m²
Unit 2 : 109.00m²

N I

K A



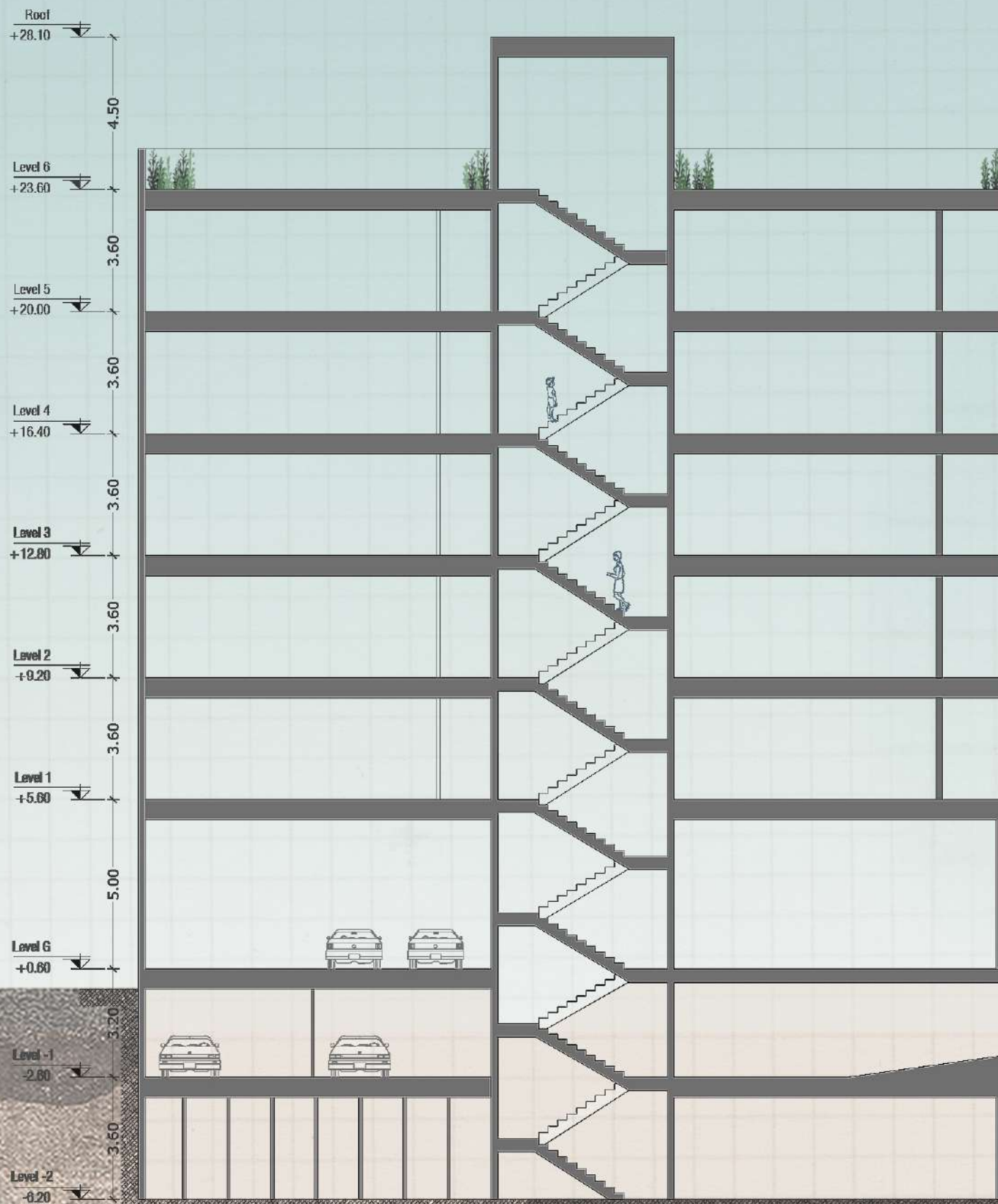
5th. Floor Plan



Unit 1 : 121.00m²
Unit 2 : 109.00m²

N I

K A



Section

N I K A



N I K A R E S I D E N T I A L P R O J E C T



N I K A R E S I D E N T I A L P R O J E C T



N I K K A
R E S I D E N T I A L
P R O J E C T



N I K A R E S I D E N T I A L P R O J E C T



N I K A R E S I D E N T I A L P R O J E C T



N I K A R E S I D E N T I A L P R O J E C T



N I K A R E S I D E N T I A L P R O J E C T



N I K A R E S I D E N T I A L P R O J E C T



N I K A R E S I D E N T I A L P R O J E C T



N I K A R E S I D E N T I A L P R O J E C T





N I K A R E S I D E N T I A L P R O J E C T