



NIKA

OCTOBER 2024

CONTENT

ALTERNATIVE 01

ALTERNATIVE 02

ALTERNATIVE 03-a

ALTERNATIVE 03-b

ALTERNATIVE 04

سه بعدی های ارائه شده برای هر آلترناتیو قابلیت جایگزینی در تمامی گزینه ها را دارد.

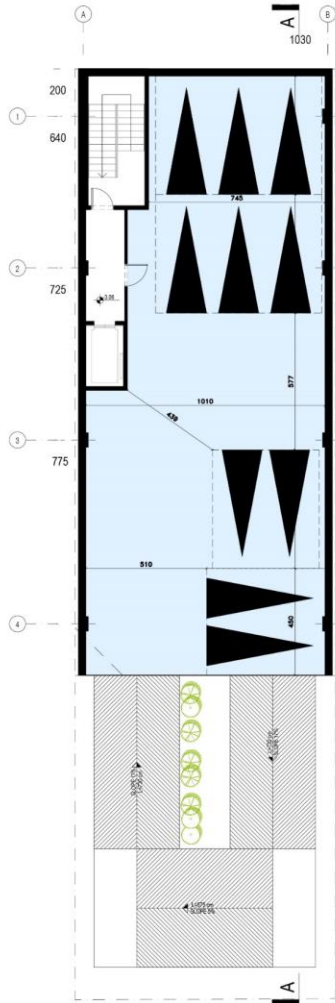
01



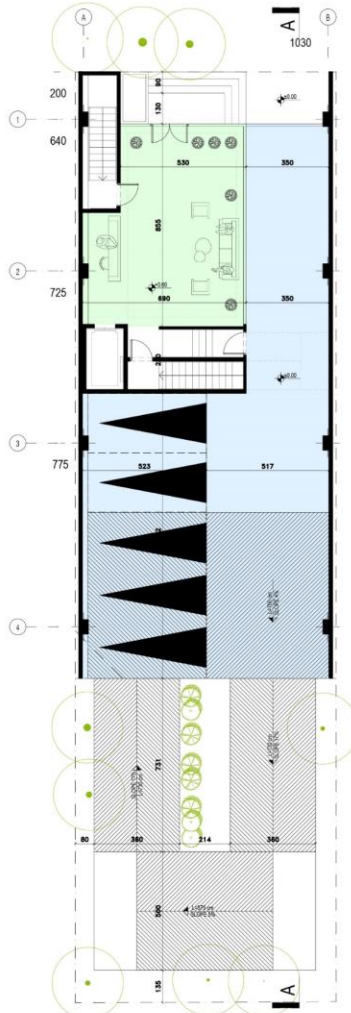
ALT 01- 15 PARKING



BASEMENT -2
TOTAL AREA | 344 M2



BASEMENT -1
TOTAL AREA | 273 M2
PARKING NUMBER | 10



GRUNGE FLOOR PLAN
TOTAL AREA | 273 M2
PARKING NUMBER | 5

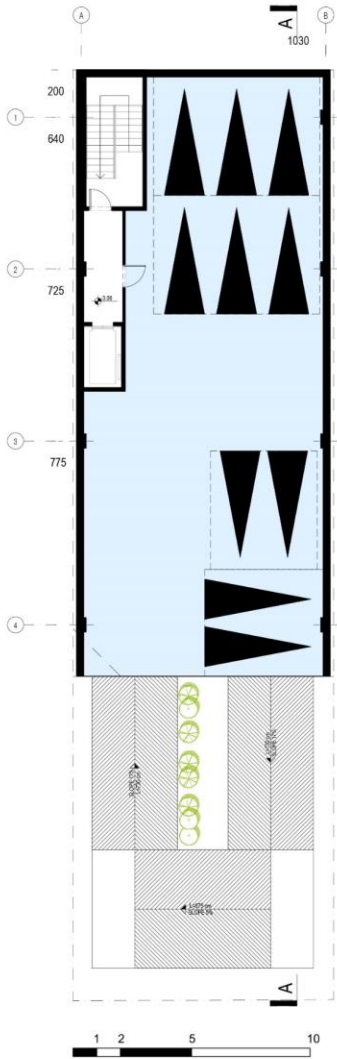


TYPICAL FLOOR PLAN
TOTAL AREA | 271 M2

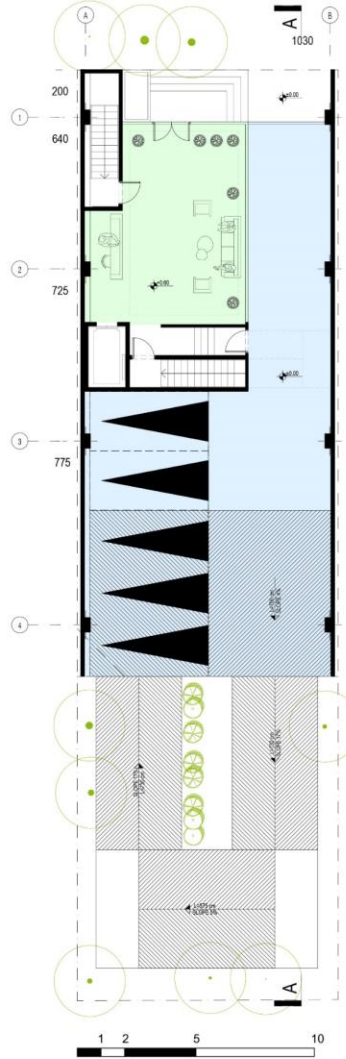
ALT 01- 15 PARKING



BASEMENT -2
TOTAL AREA | 344 M2



BASEMENT -1
TOTAL AREA | 273 M2
PARKING NUMBER | 10

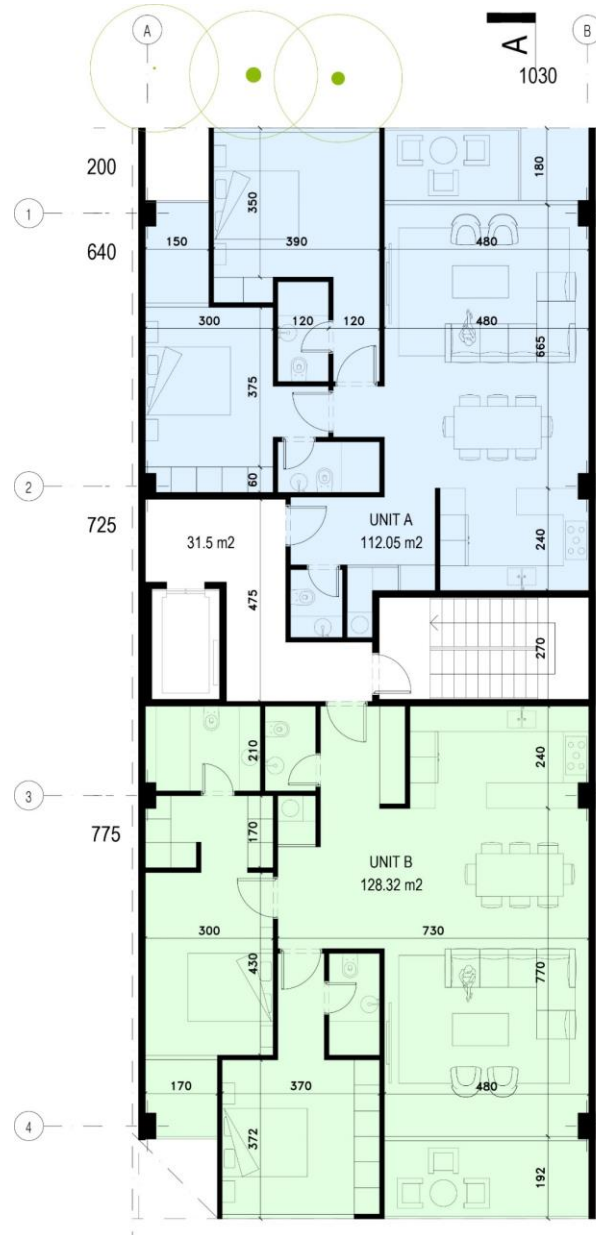


GRUNGE FLOOR PLAN
TOTAL AREA | 273 M2
PARKING NUMBER | 5

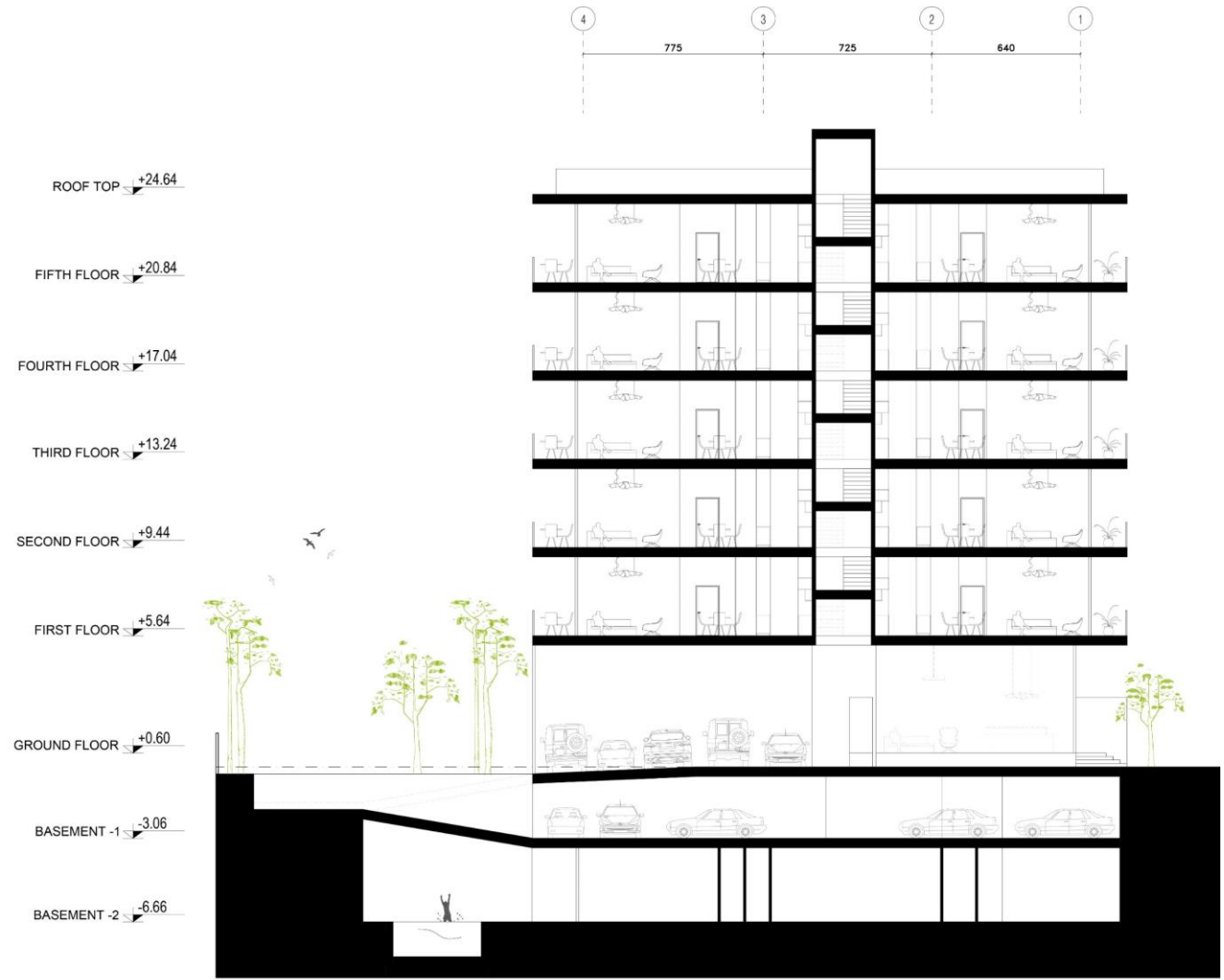


TYPICAL FLOOR PLAN
TOTAL AREA | 271 M2

ALT 01- 15 PARKING



ALT 01- 15 PARKING



SECTION A-A



SOUTH VIEW

OCTOBER 11 2024



SOUTH VIEW

OCTOBER 11 2024



SOUTH VIEW

OCTOBER 11 2024



SOUTH VIEW



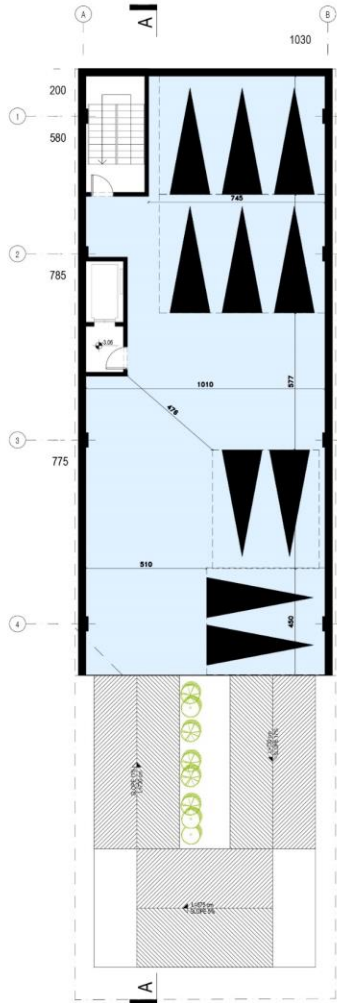
NORTH VIEW

02

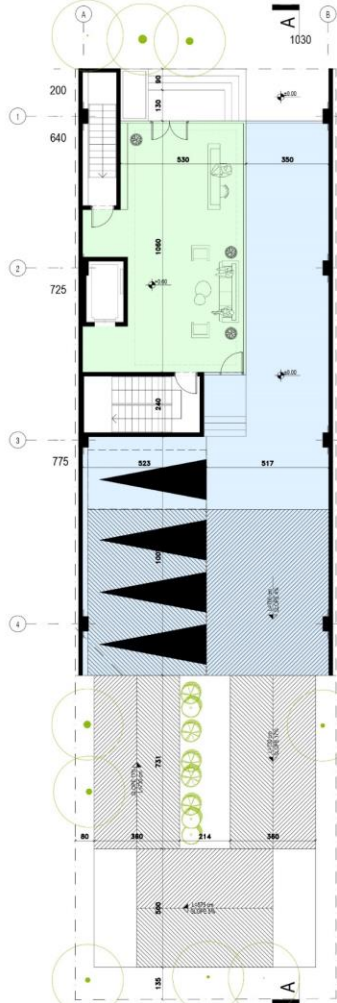
ALT 02- 14 PARKING



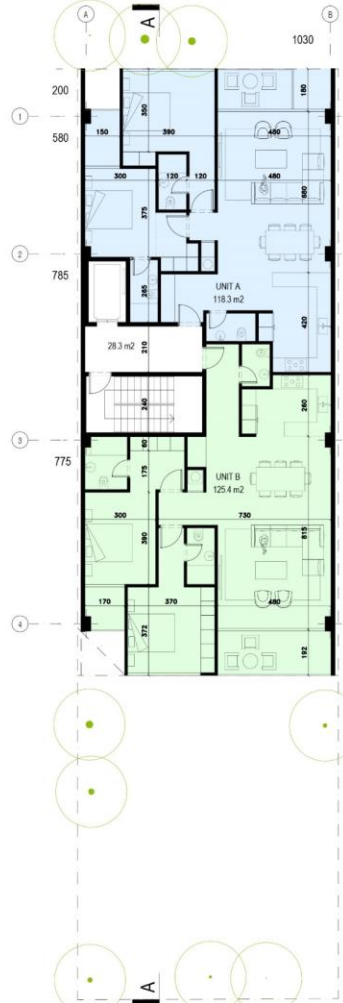
BASEMENT -2
TOTAL AREA | 344 M2



BASEMENT -1
TOTAL AREA | 273 M2
PARKING NUMBER | 10



GRUNGE FLOOR PLAN
TOTAL AREA | 273 M2
PARKING NUMBER | 4

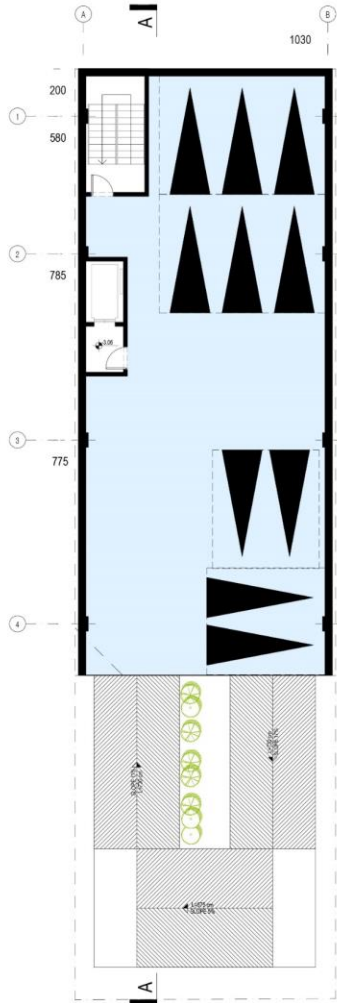


TYPICAL FLOOR PLAN
TOTAL AREA | 269.06 M2

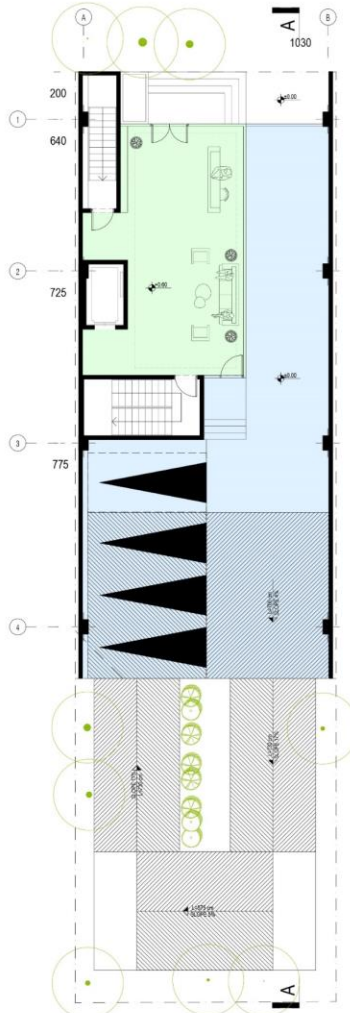
ALT 02- 14 PARKING



BASEMENT -2
TOTAL AREA | 344 M2



BASEMENT -1
TOTAL AREA | 273 M2
PARKING NUMBER | 10

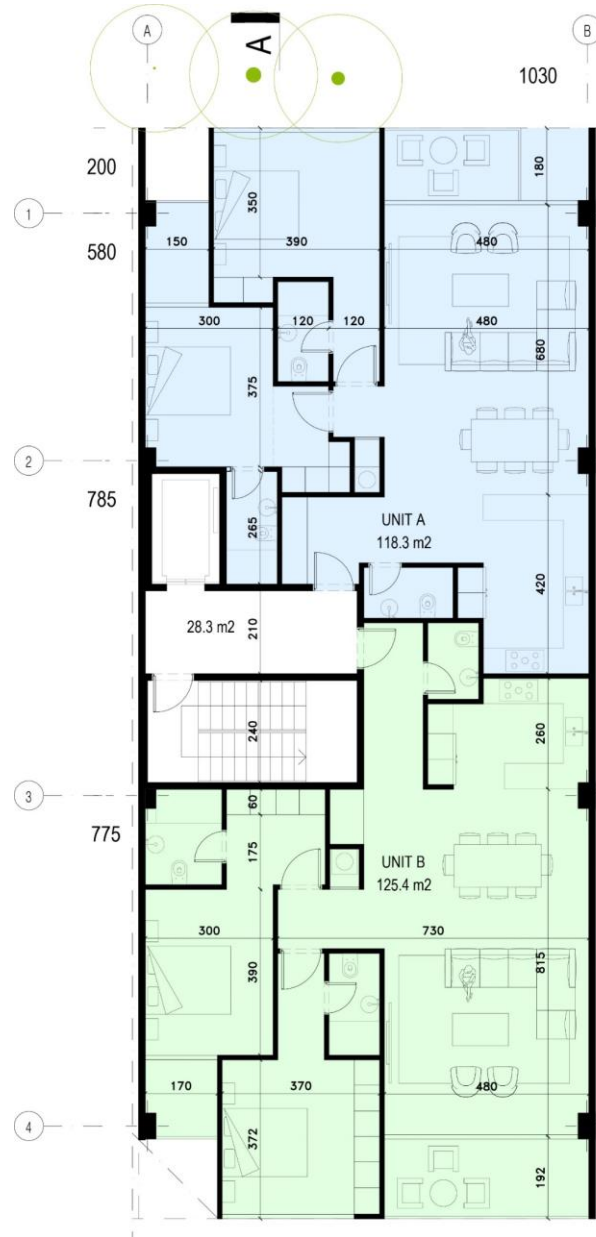


GRUNGE FLOOR PLAN
TOTAL AREA | 273 M2
PARKING NUMBER | 4



TYPICAL FLOOR PLAN
TOTAL AREA | 269.06 M2

ALT 02- 14 PARKING



ALT 02- 14 PARKING



1 2 5 10
SECTION A-A



SOUTH VIEW

OCTOBER 11 2024



SOUTH VIEW

OCTOBER 11 2024



SOUTH VIEW

OCTOBER 11 2024



SOUTH VIEW

OCTOBER 11 2024



NORTH VIEW

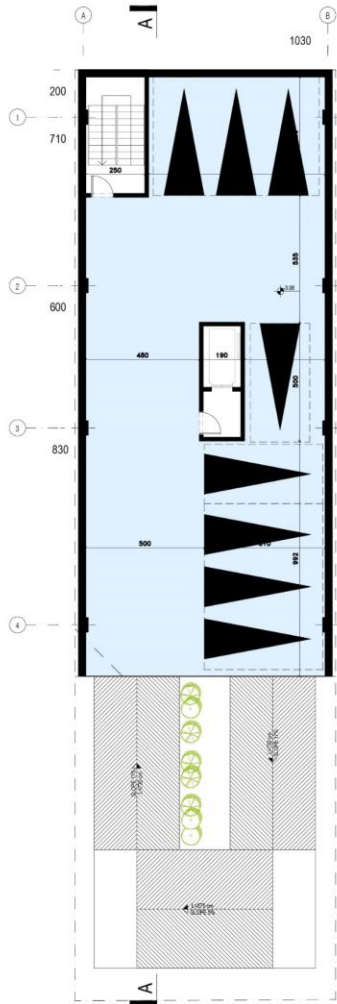
OCTOBER 11 2024

03

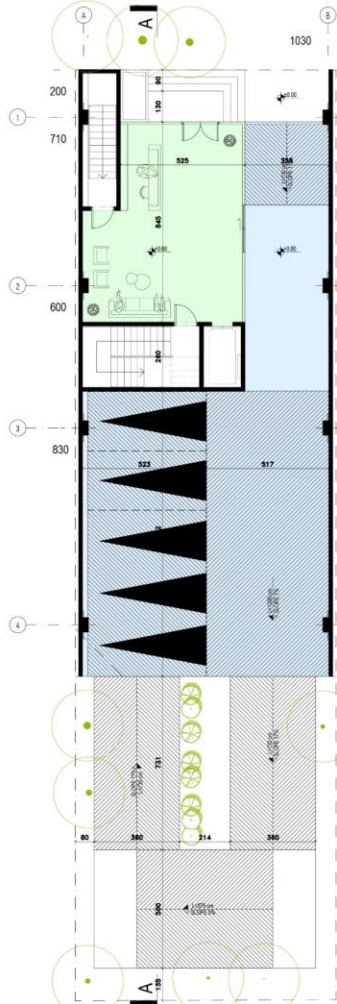
ALT 03-a | 13 PARKING



BASEMENT -2
TOTAL AREA | 344 M2



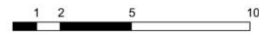
BASEMENT -1
TOTAL AREA | 273 M2
PARKING NUMBER | 8



GRUNGE FLOOR PLAN
TOTAL AREA | 273 M2
PARKING NUMBER | 8



MEZZANINE FLOOR PLAN
TOTAL AREA | 150 M2

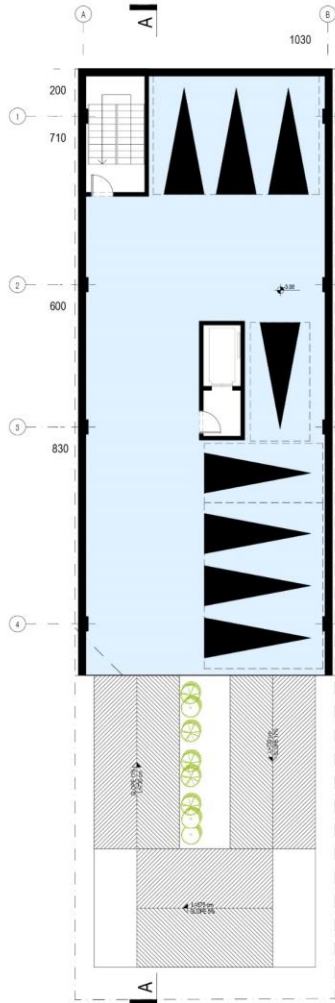


TYPICAL FLOOR PLAN
TOTAL AREA | 269.06 M2

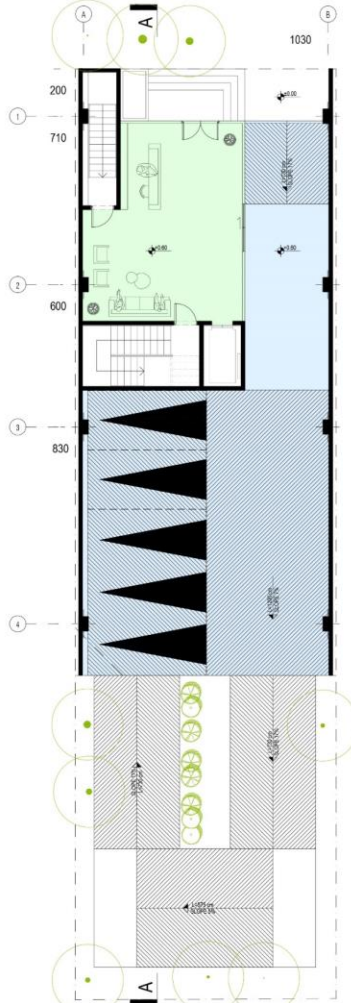
ALT 03- 13 PARKING



BASEMENT -2
TOTAL AREA | 344 M2



BASEMENT -1
TOTAL AREA | 273 M2
PARKING NUMBER | 8



GRUNGE FLOOR PLAN
TOTAL AREA | 273 M2
PARKING NUMBER | 8



MEZZANINE FLOOR PLAN
TOTAL AREA | 150 M2



TYPICAL FLOOR PLAN
TOTAL AREA | 269.06 M2

ALT 03- 13 PARKING





SOUTH VIEW

OCTOBER 11 2024



SOUTH VIEW

OCTOBER 11 2024



SOUTH VIEW

OCTOBER 11 2024



SOUTH VIEW

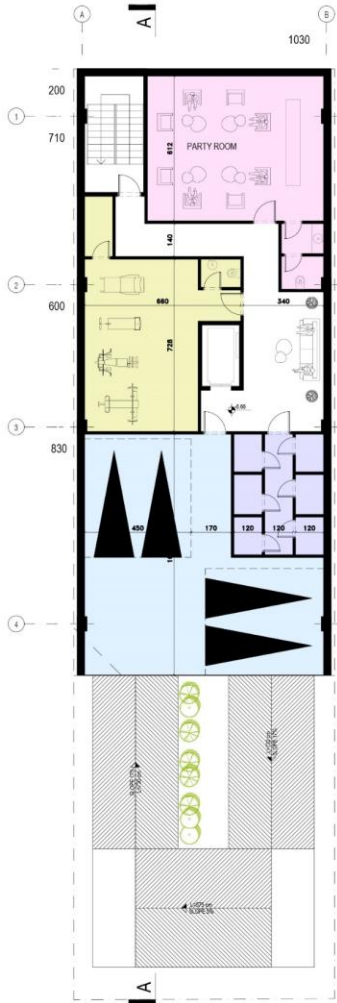
OCTOBER 11 2024



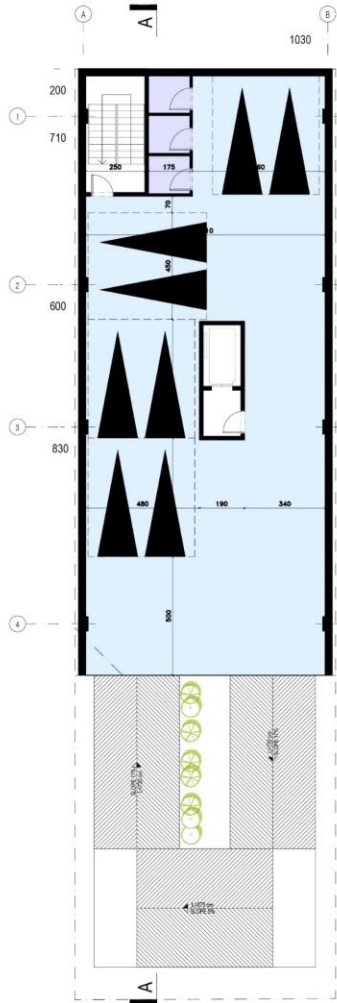
NORTH VIEW

OCTOBER 11 2024

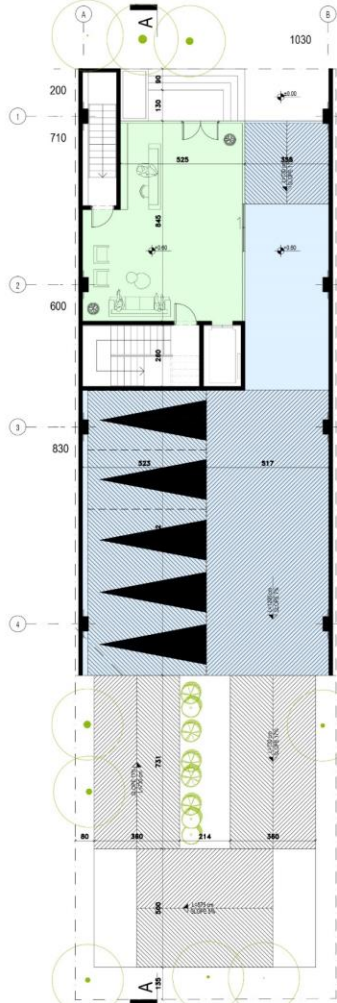
ALT 03-b | 17 PARKING



BASEMENT -2
 TOTAL AREA | 344 M2
 PARKING NUMBER | 4



BASEMENT -1
 TOTAL AREA | 273 M2
 PARKING NUMBER | 3



GRUNGE FLOOR PLAN
 TOTAL AREA | 273 M2
 PARKING NUMBER | 8

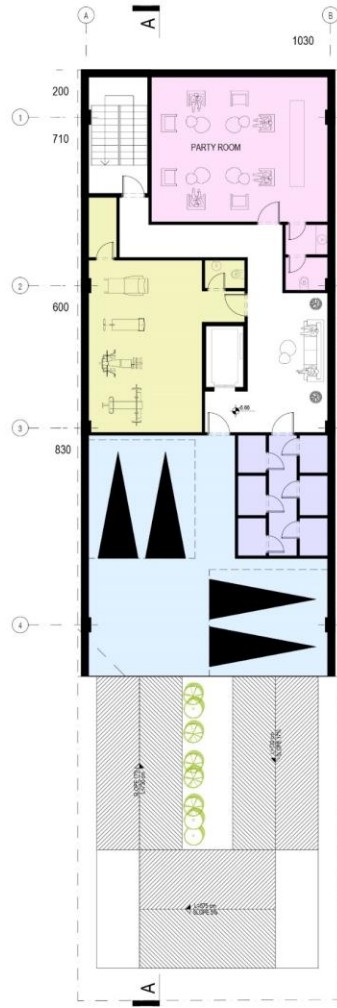


MEZZANINE FLOOR PLAN
 TOTAL AREA | 150 M2

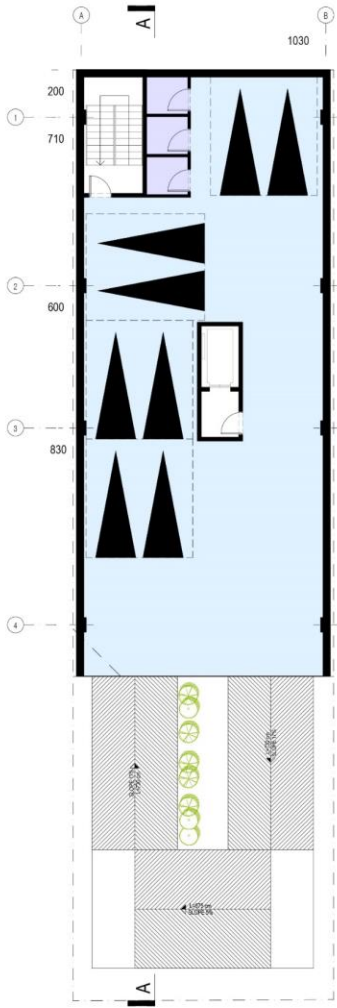


TYPICAL FLOOR PLAN
 TOTAL AREA | 269.06 M2

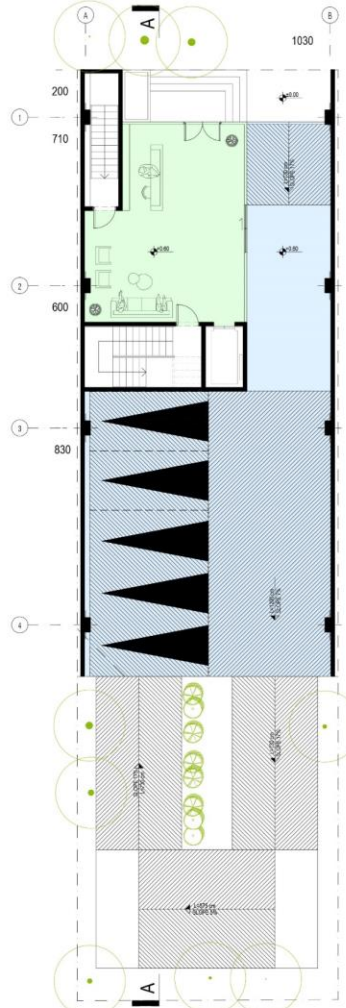
ALT 03- 17 PARKING



BASEMENT -2
 TOTAL AREA | 344 M2
 PARKING NUMBER | 4



BASEMENT -1
 TOTAL AREA | 273 M2
 PARKING NUMBER | 4



GRUNGE FLOOR PLAN
 TOTAL AREA | 273 M2
 PARKING NUMBER | 8



MEZZANINE FLOOR PLAN
 TOTAL AREA | 150 M2



TYPICAL FLOOR PLAN
 TOTAL AREA | 269.06 M2



SOUTH VIEW

OCTOBER 11 2024



SOUTH VIEW

OCTOBER 11 2024



SOUTH VIEW

OCTOBER 11 2024



SOUTH VIEW

OCTOBER 11 2024



NORTH VIEW

OCTOBER 11 2024

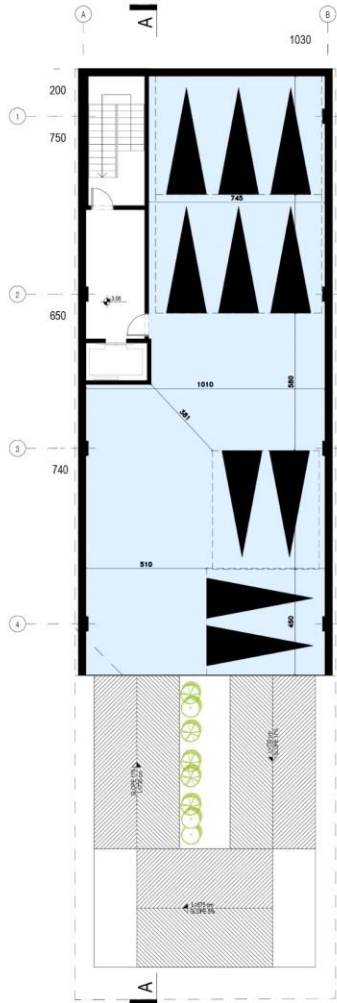
04



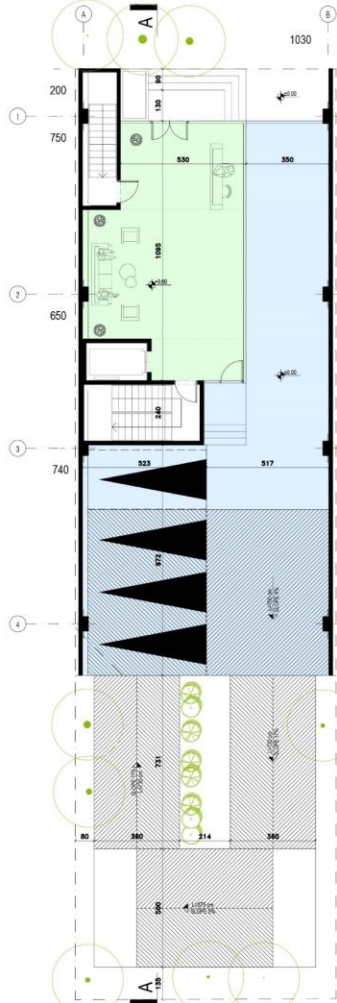
ALT 04- 14 PARKING



BASEMENT -2
TOTAL AREA | 344 M2



BASEMENT -1
TOTAL AREA | 273 M2
PARKING NUMBER | 10



GRUNGE FLOOR PLAN
TOTAL AREA | 273 M2
PARKING NUMBER | 4

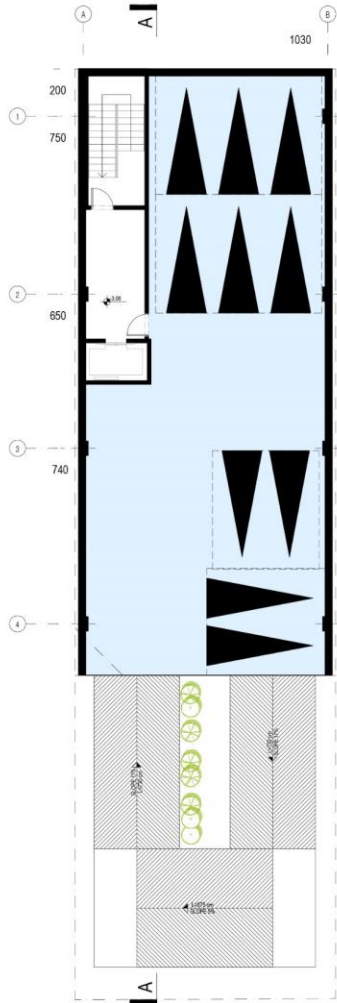


TYPICAL FLOOR PLAN
TOTAL AREA | 271 M2

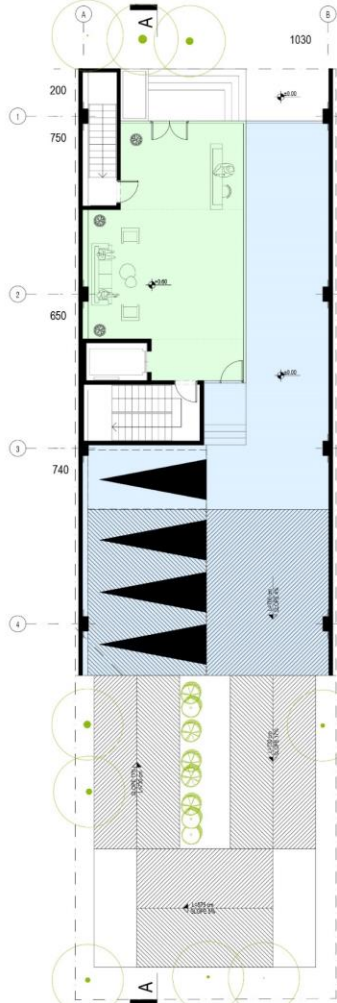
ALT 04- 14 PARKING



BASEMENT -2
TOTAL AREA | 344 M2



BASEMENT -1
TOTAL AREA | 273 M2
PARKING NUMBER | 10

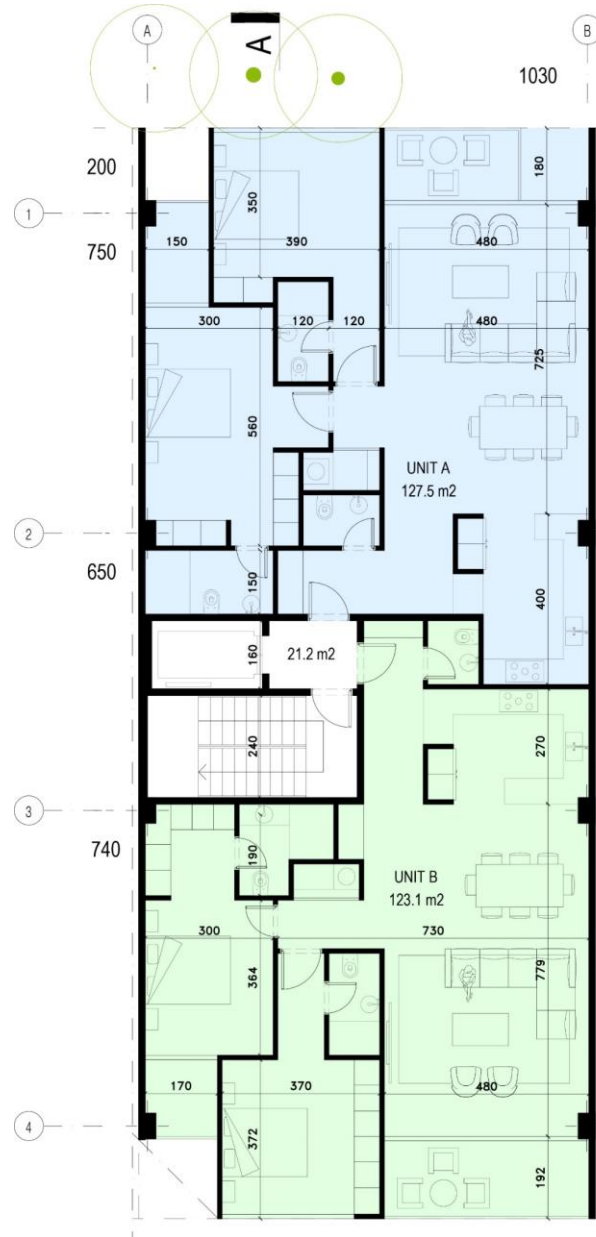


GRUNGE FLOOR PLAN
TOTAL AREA | 273 M2
PARKING NUMBER | 4

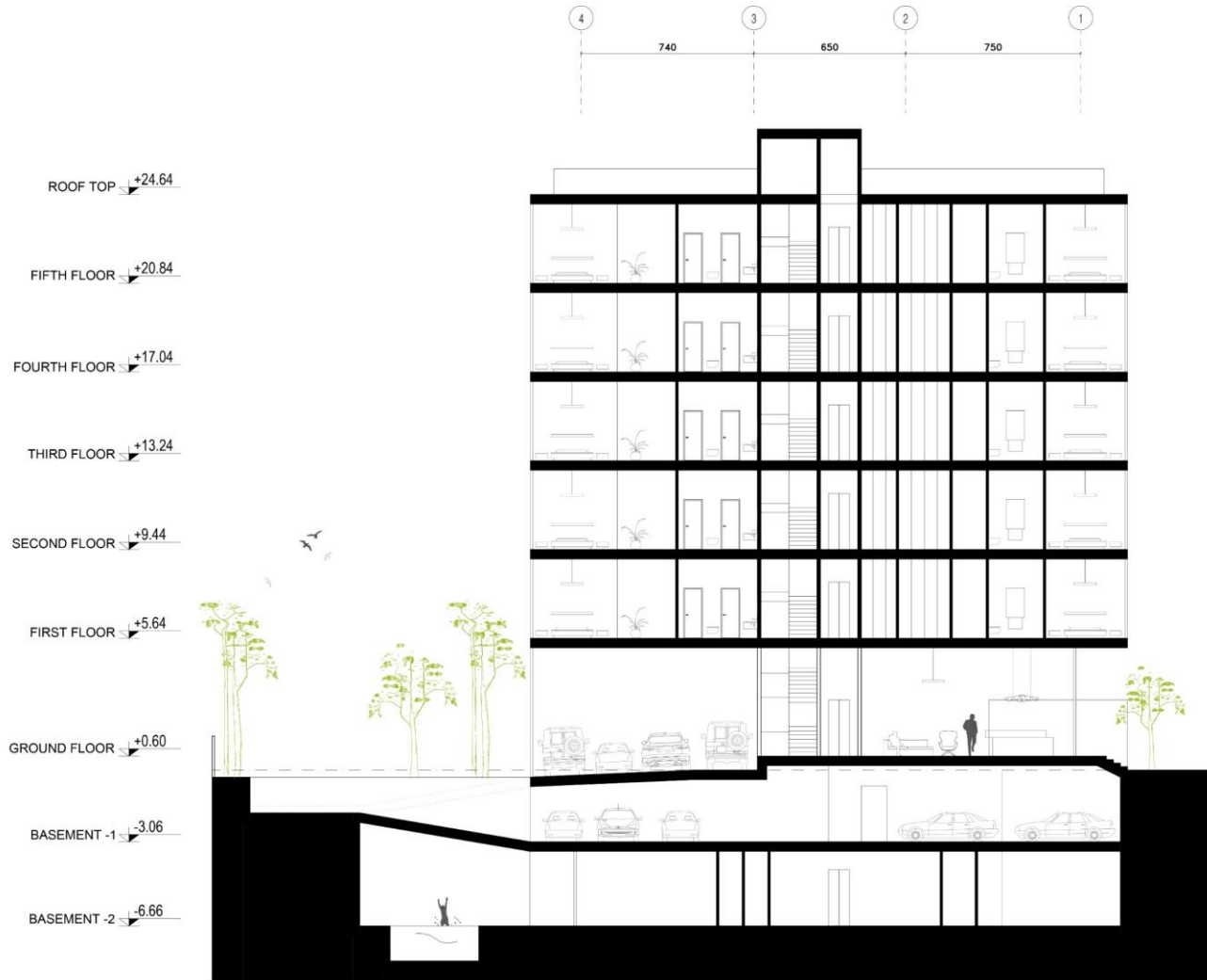


TYPICAL FLOOR PLAN
TOTAL AREA | 271 M2

ALT 04- 14 PARKING



ALT 04- 14 PARKING





SOUTH VIEW

OCTOBER 11 2024



SOUTH VIEW

OCTOBER 11 2024



SOUTH VIEW

OCTOBER 11 2024



SOUTH VIEW

OCTOBER 11 2024



NORTH VIEW

OCTOBER 11 2024

✉ info@foroffice.ir
www foroffice.ir
@for_architecture_office
☎ 09129539959 | 09120120631

FOR
ARCHITECTURE OFFICE

تهران، ونک، ملاصدرا، شیراز شمالی، زاینده رود غربی، مجتمع پارک پرنس