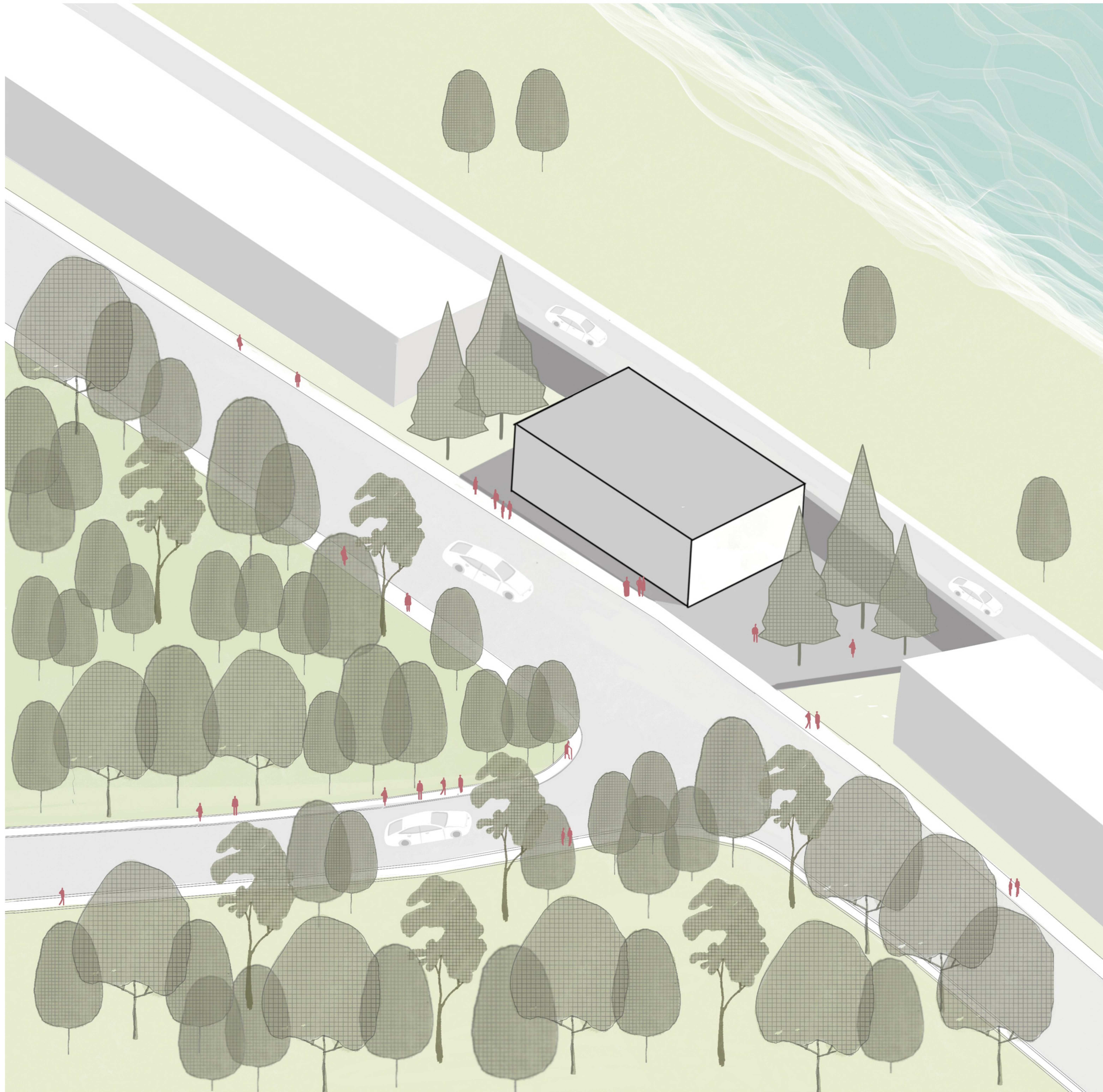


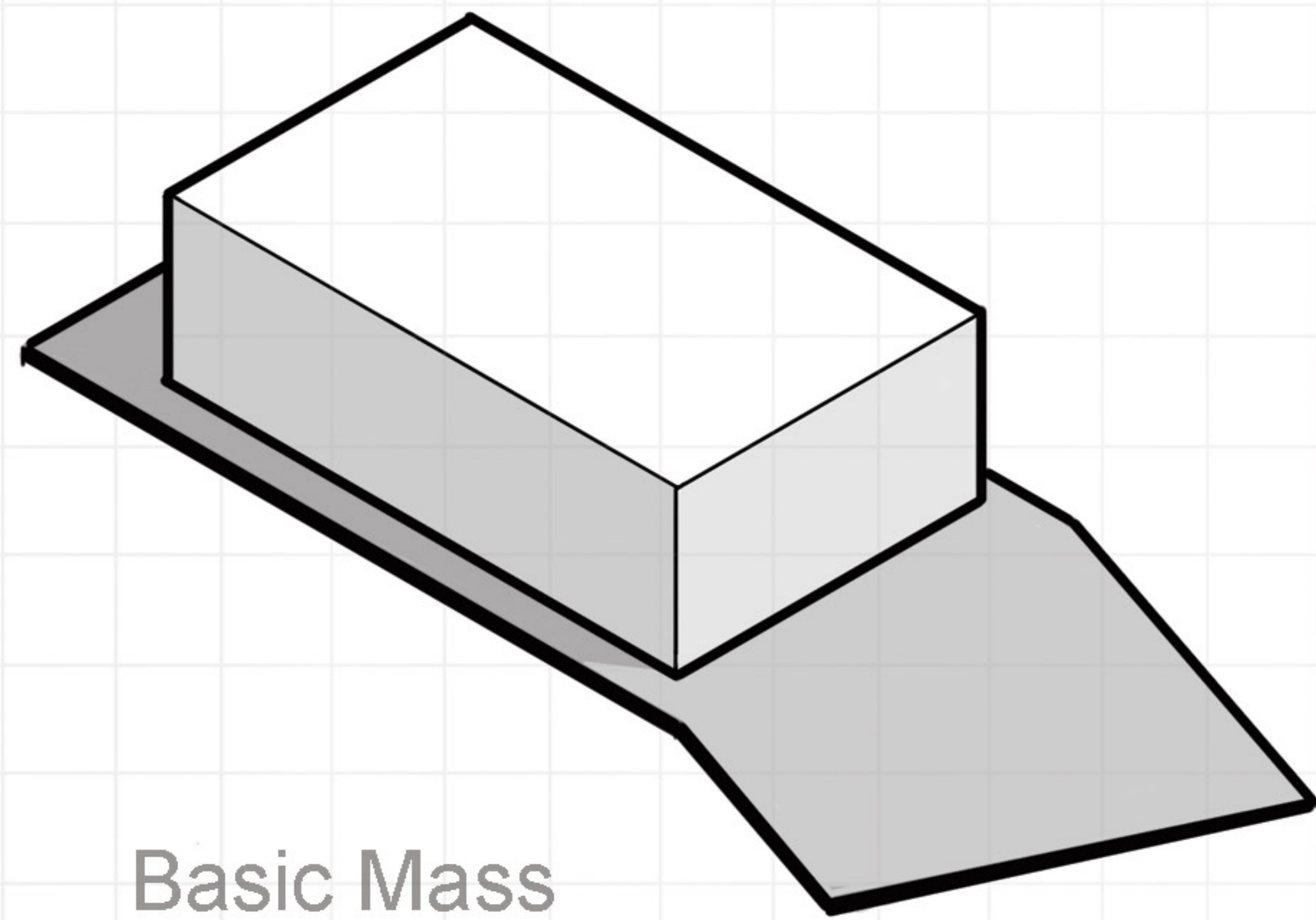


Narenj VILLA

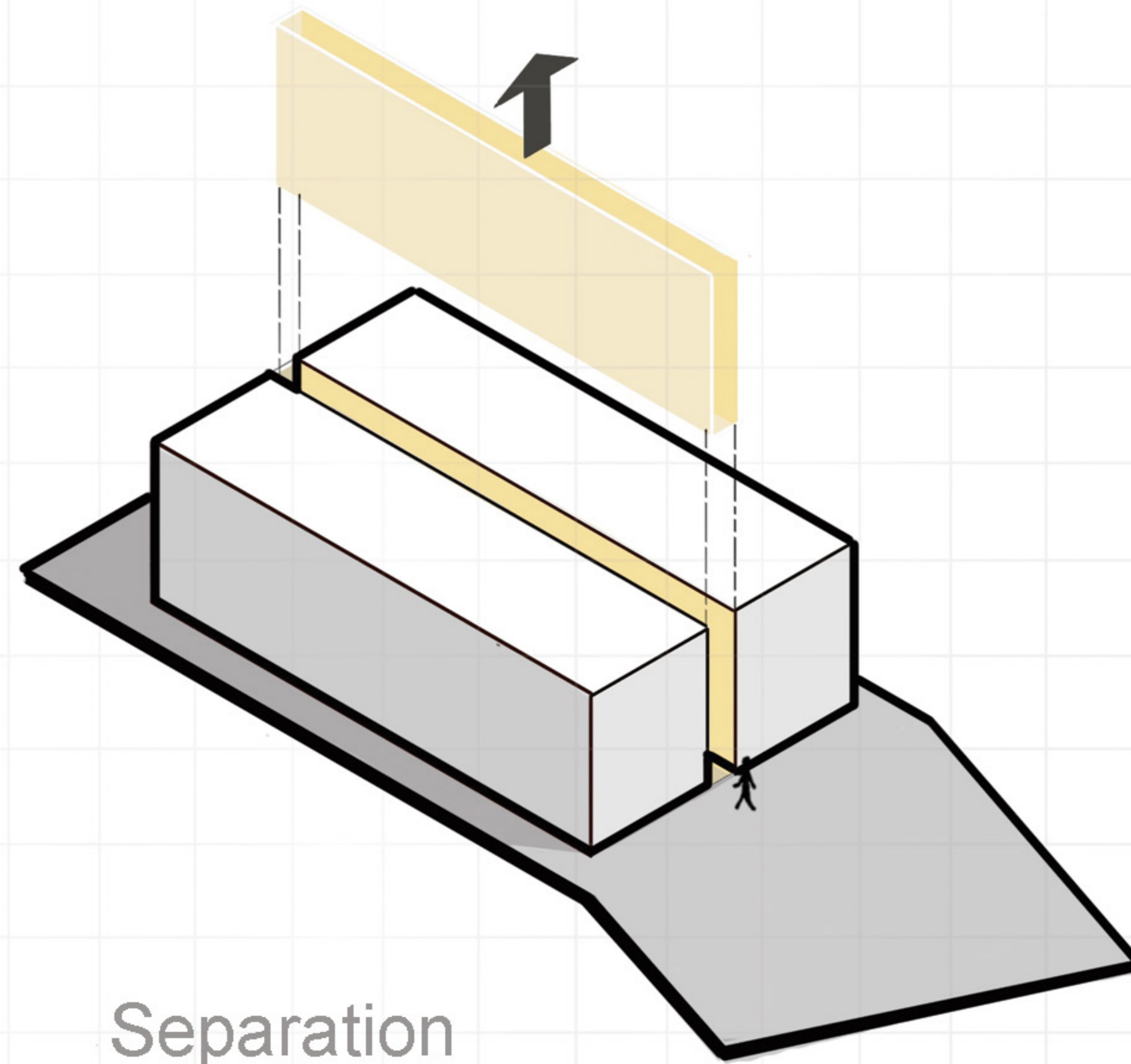


Forest and Sea

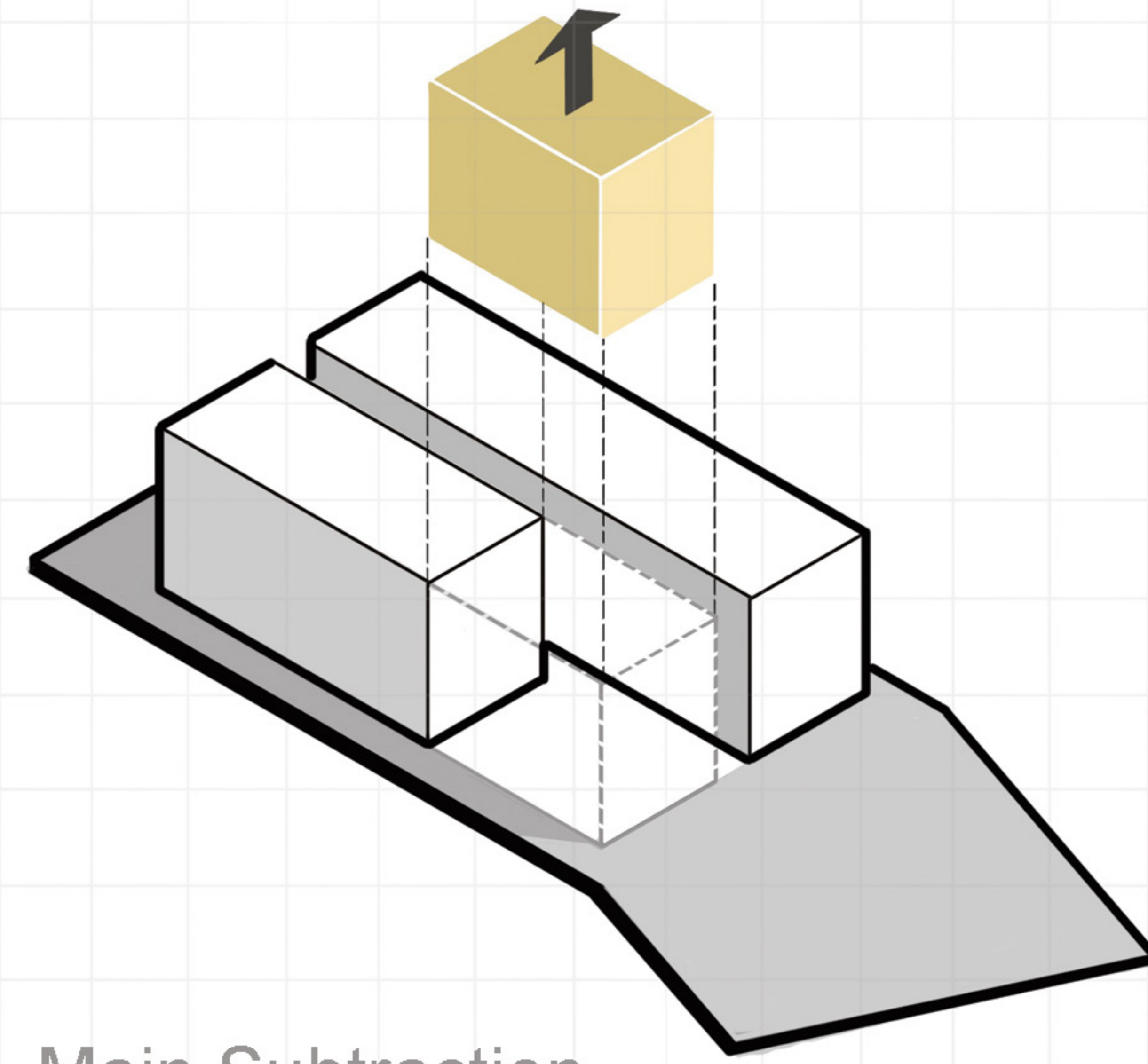
Perception of the Subject of Design in Interaction with the Natural Environment.



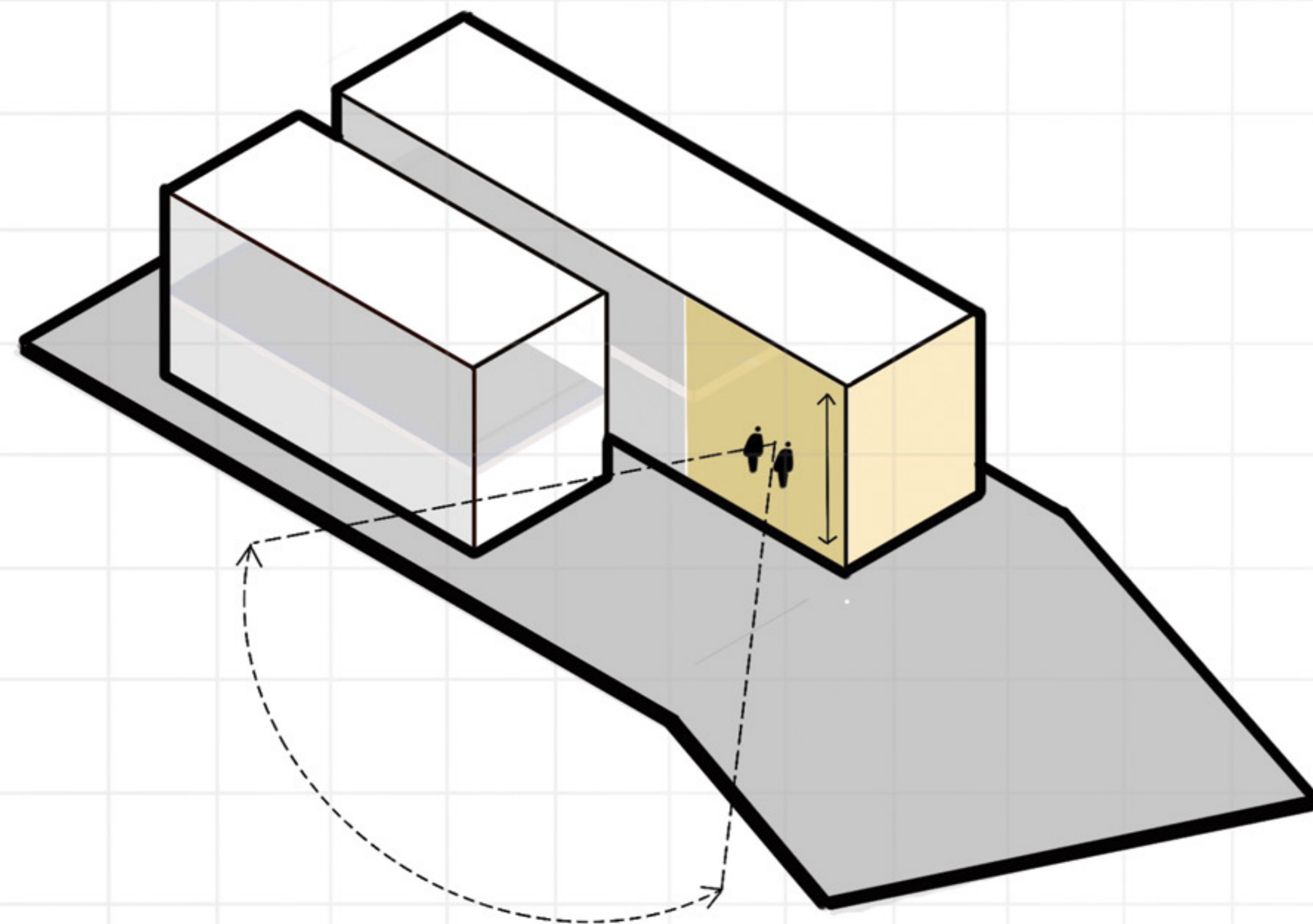
Basic Mass



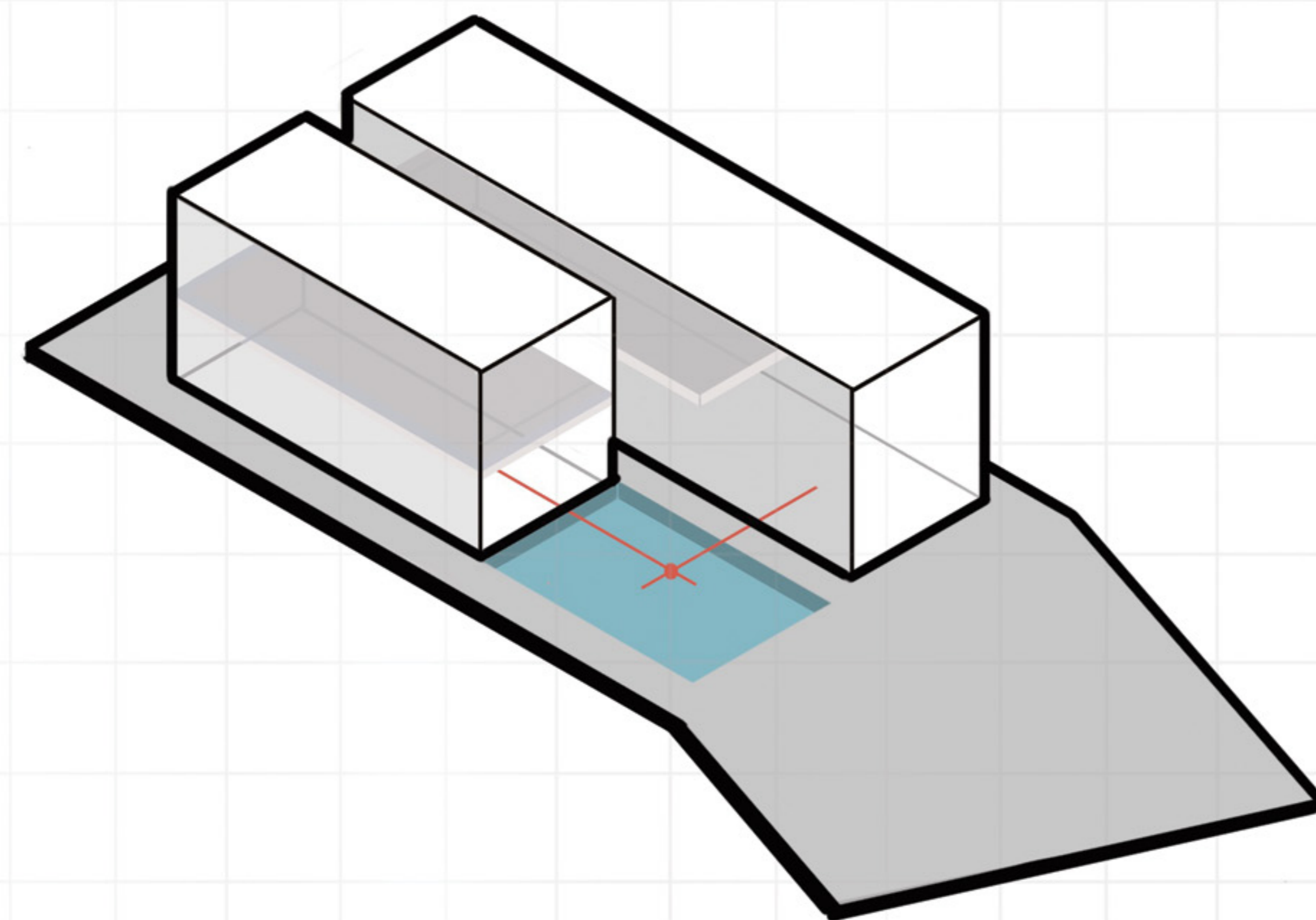
Separation
Based on Force of Entry



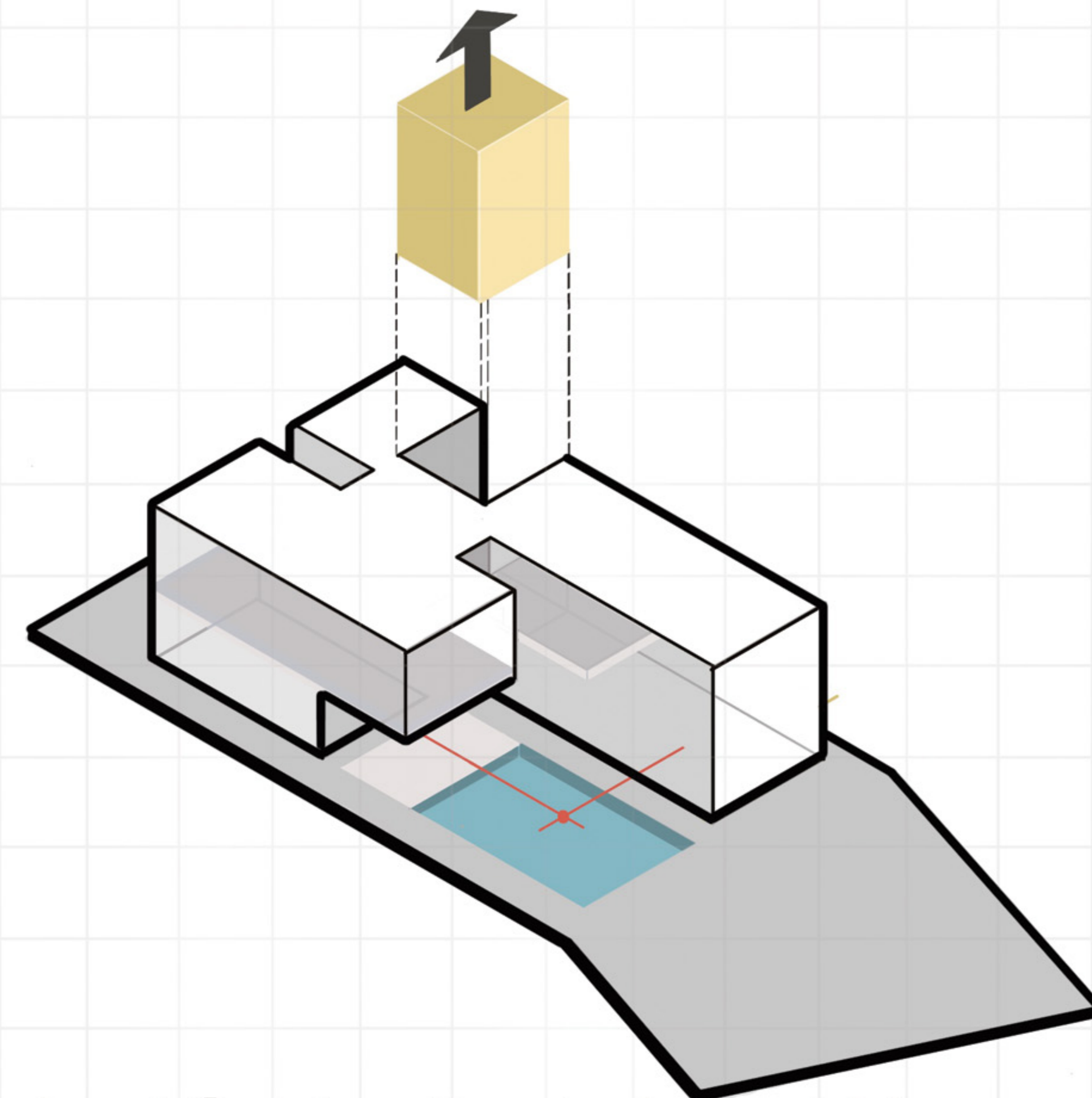
Main Subtraction
Maximum use of Southern Light



Dedicate the Main Spaces
to the Best Parts and Make
it Duble



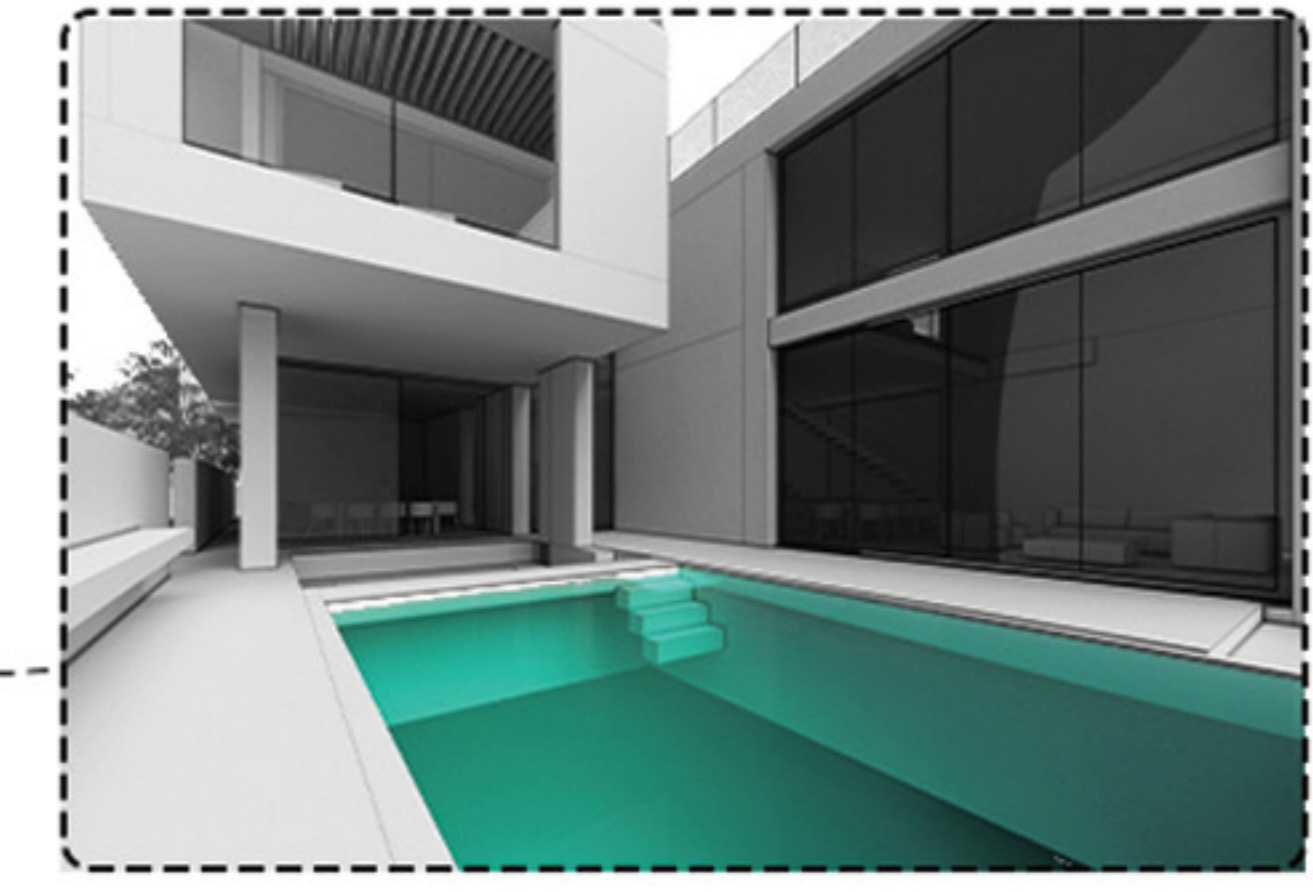
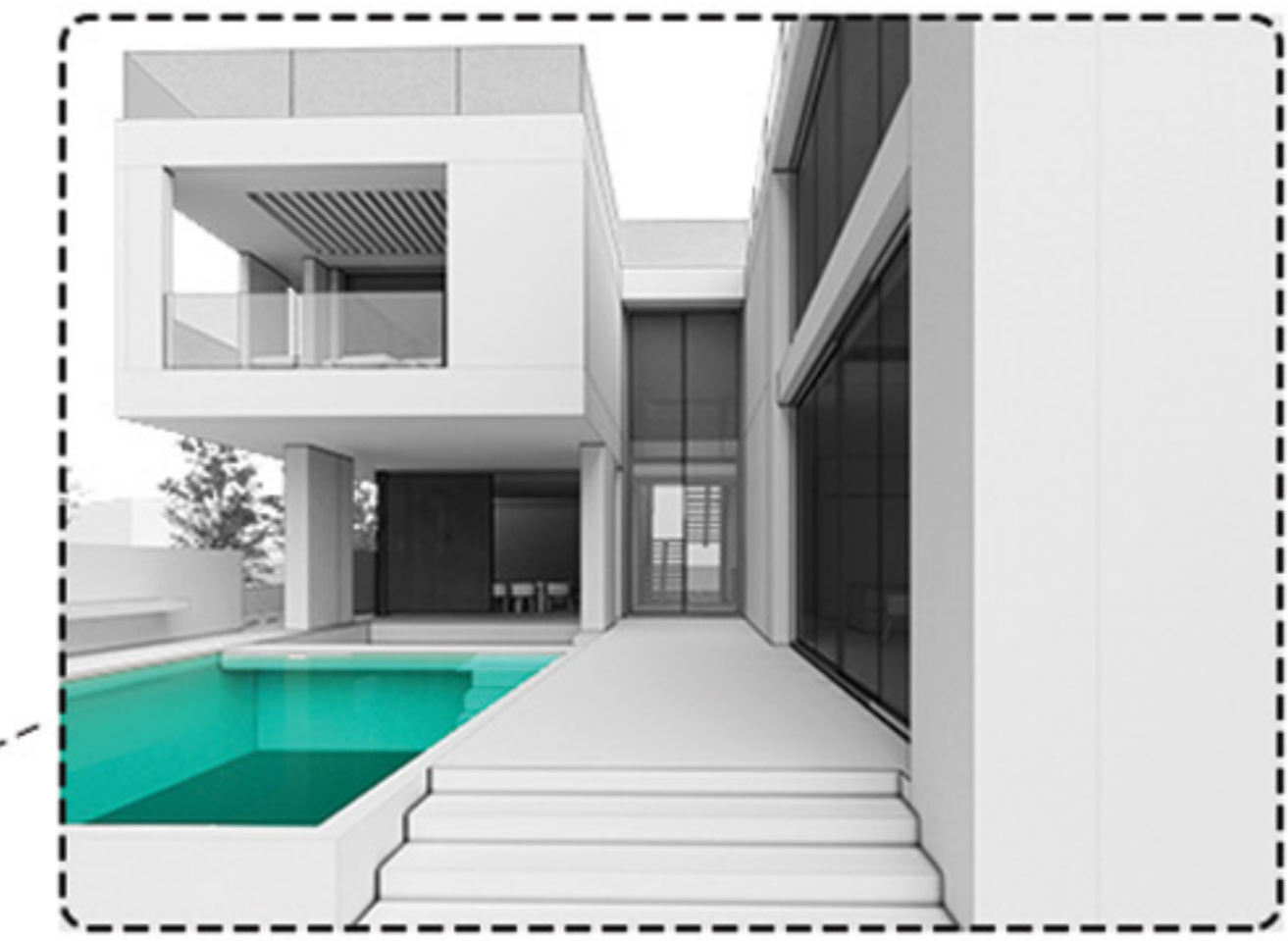
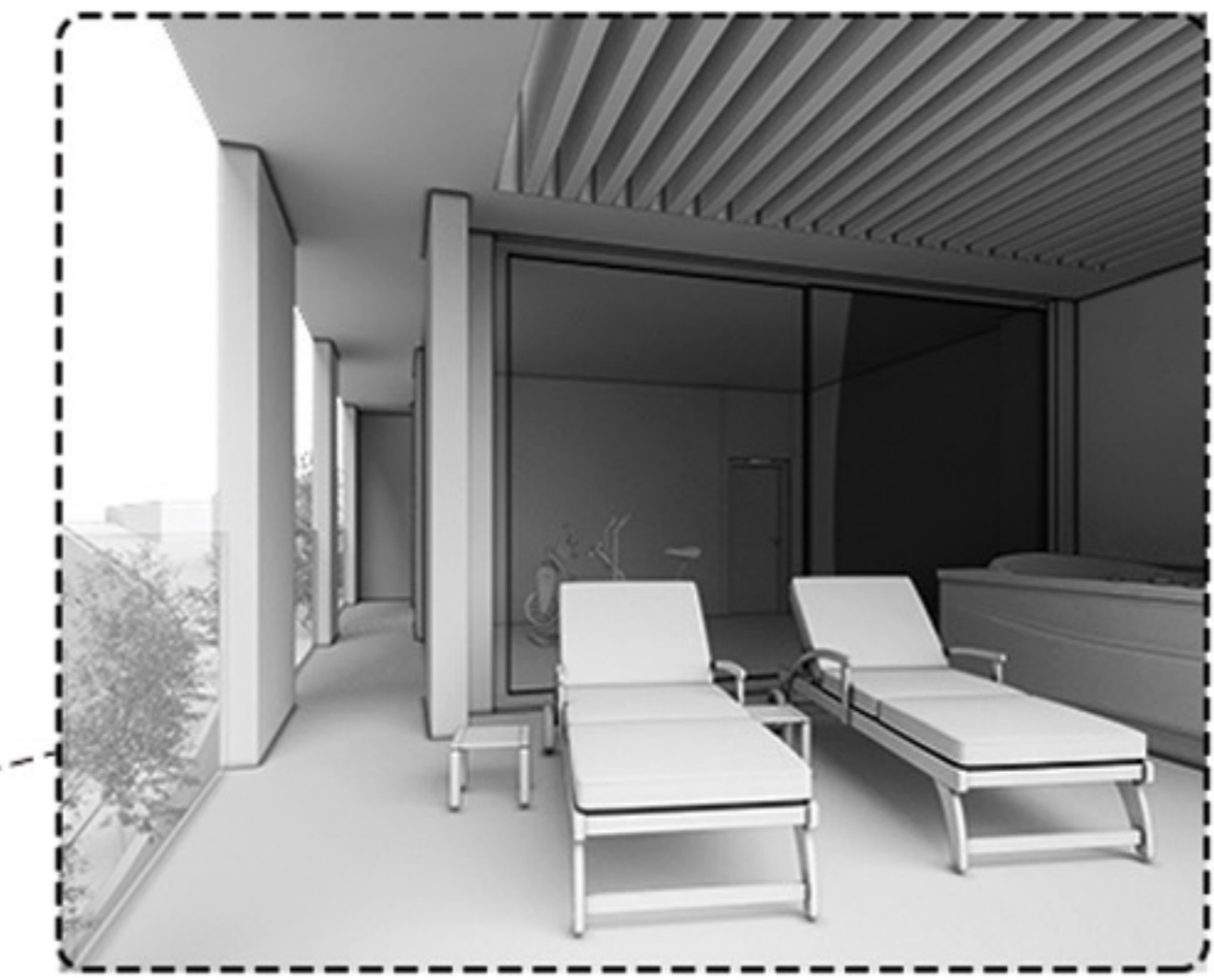
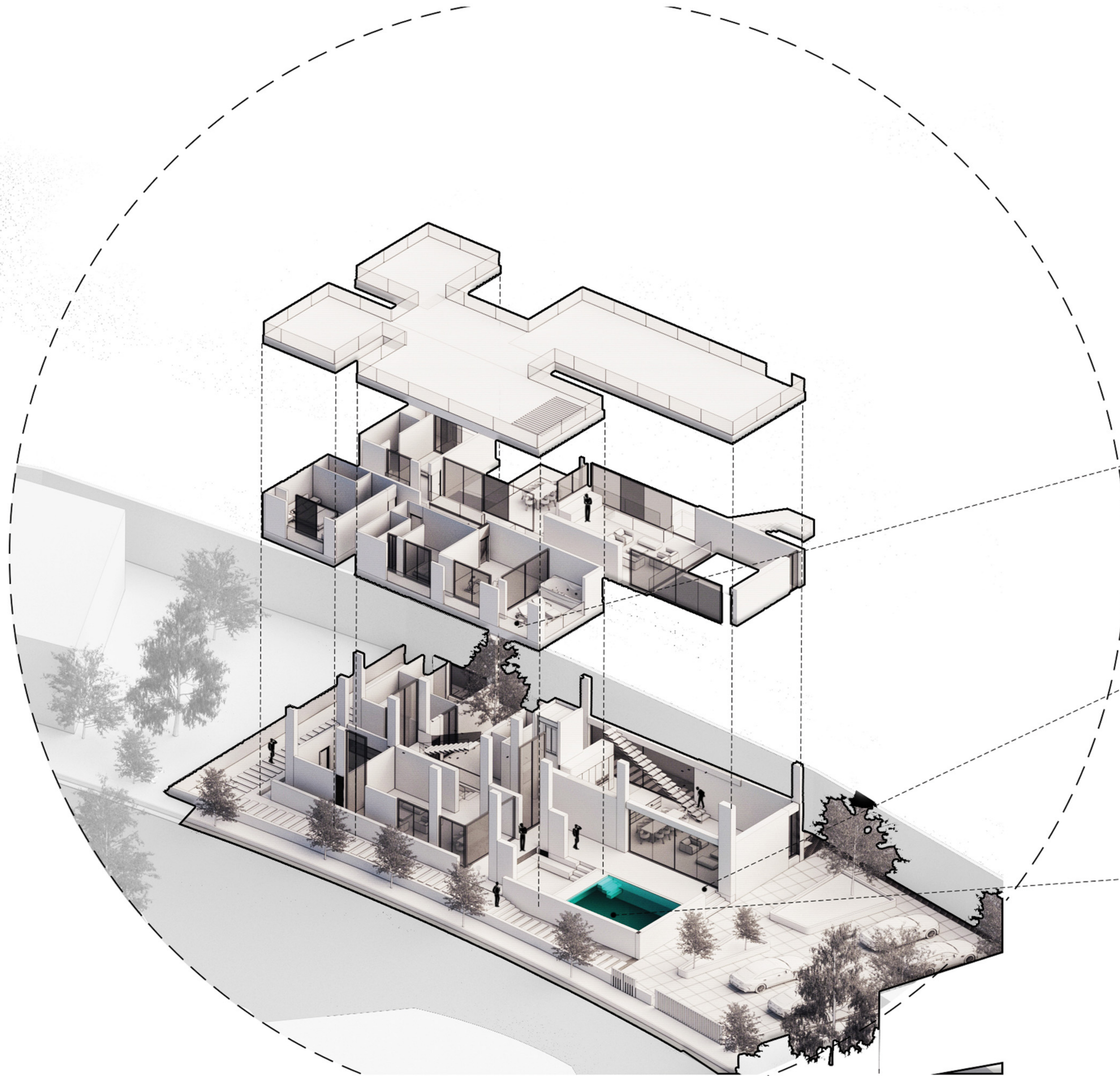
Locate the Pool in te Place
of Main Loss and Make a
Connection



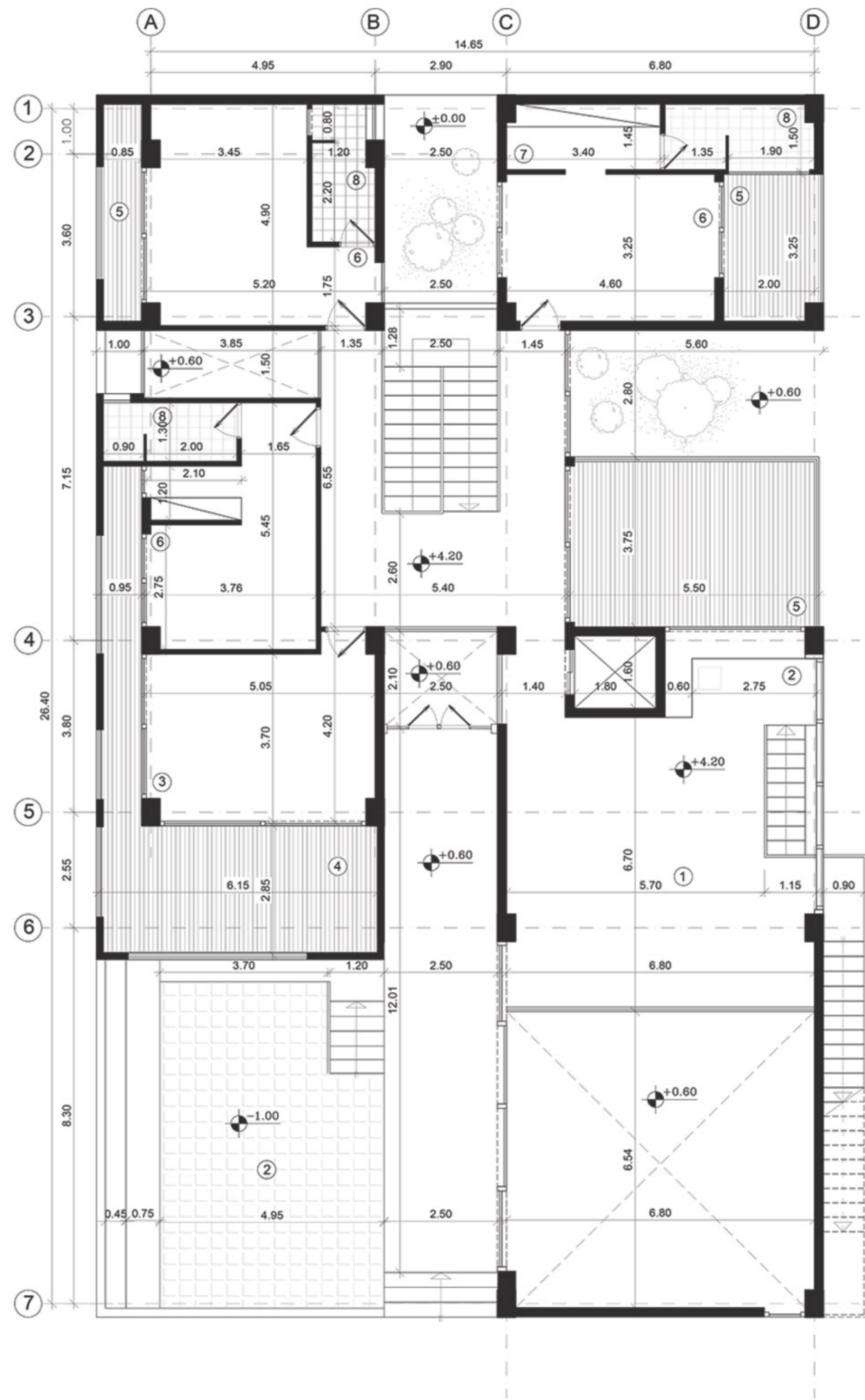
Last Subtraction to Intract More
with Invironment

Isometric View



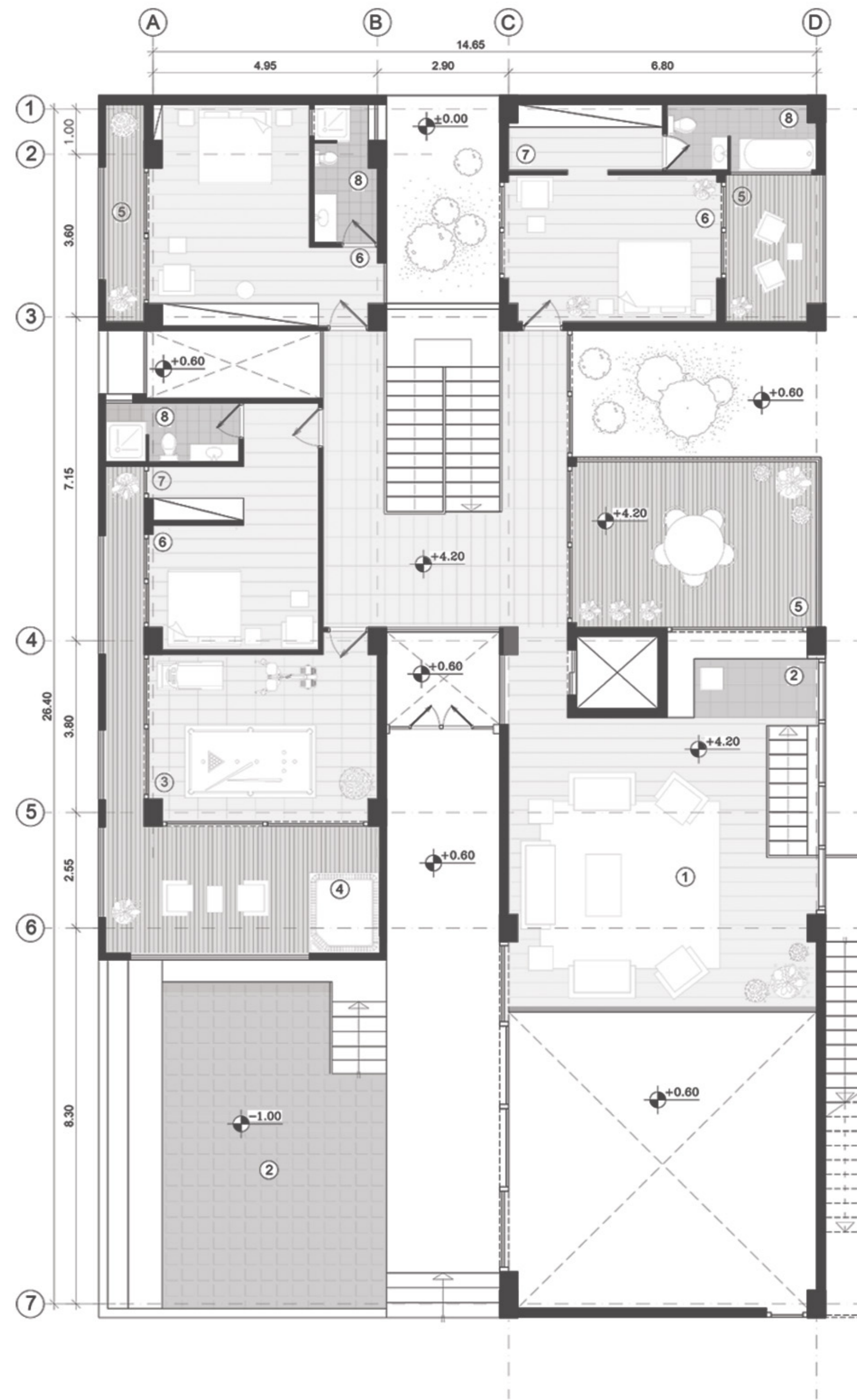


Explosive View



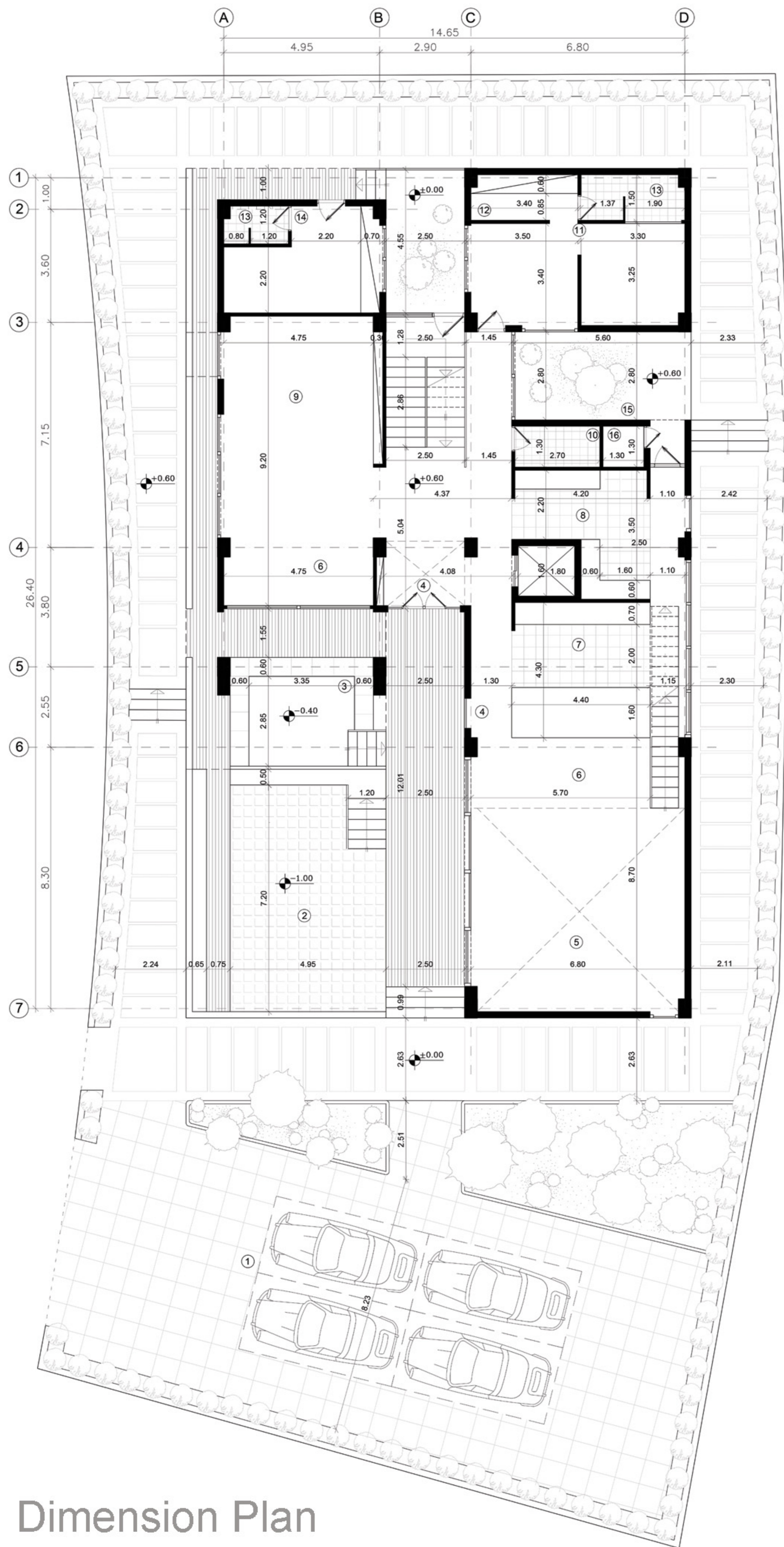
- ① Living Room
- ② Bar
- ③ Gym
- ④ Hot Tub
- ⑤ Terrace
- ⑥ Master Room
- ⑦ Closet Room
- ⑧ Bathroom

Dimension Plan
Level +4.20



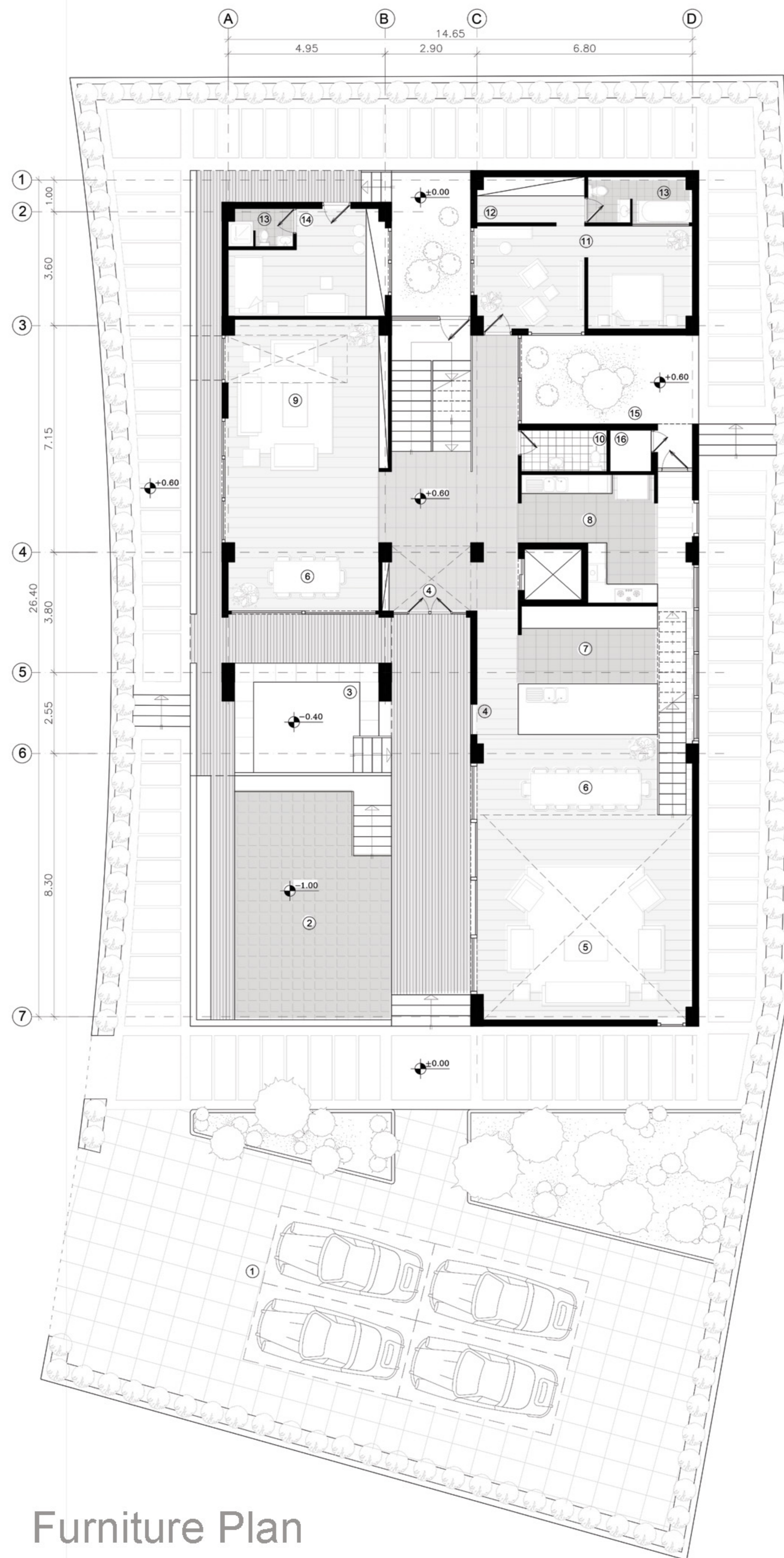
- ① Living Room
- ② Bar
- ③ Gym
- ④ Hot Tub
- ⑤ Terrace
- ⑥ Master Room
- ⑦ Closet Room
- ⑧ Bathroom

Furniture Plan
Level +4.20



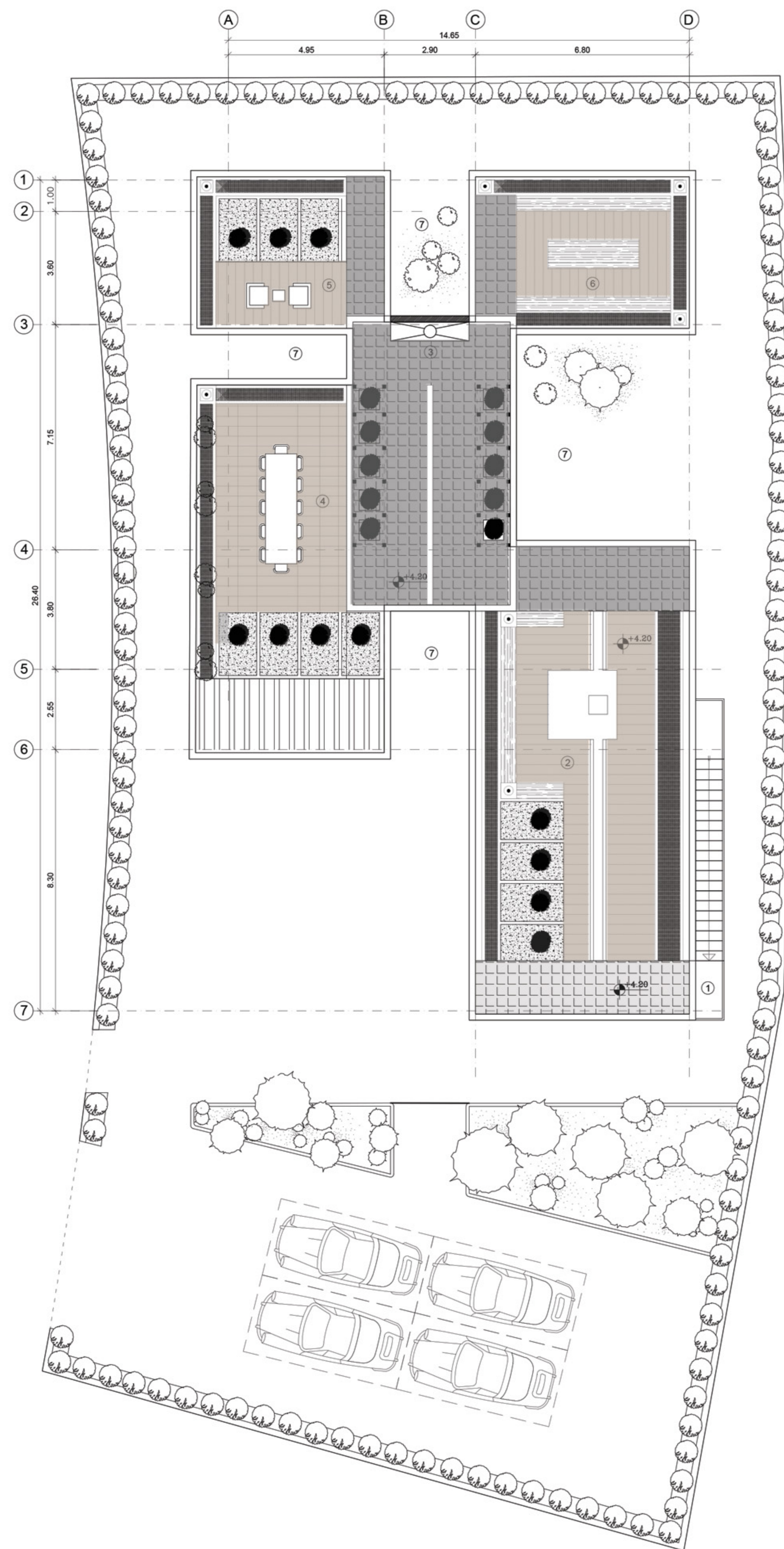
Dimension Plan
Level +0.60

- ① Parking
- ② Pool
- ③ Fire place
- ④ Entrance
- ⑤ Living Room
- ⑥ Dining Room
- ⑦ Kitchen
- ⑧ Kitchen
- ⑨ TV Room
- ⑩ wc
- ⑪ Guest Room
- ⑫ Closet Room
- ⑬ Bathroom
- ⑭ Staff Room
- ⑮ Courtyard



Furniture Plan
Level +0.60

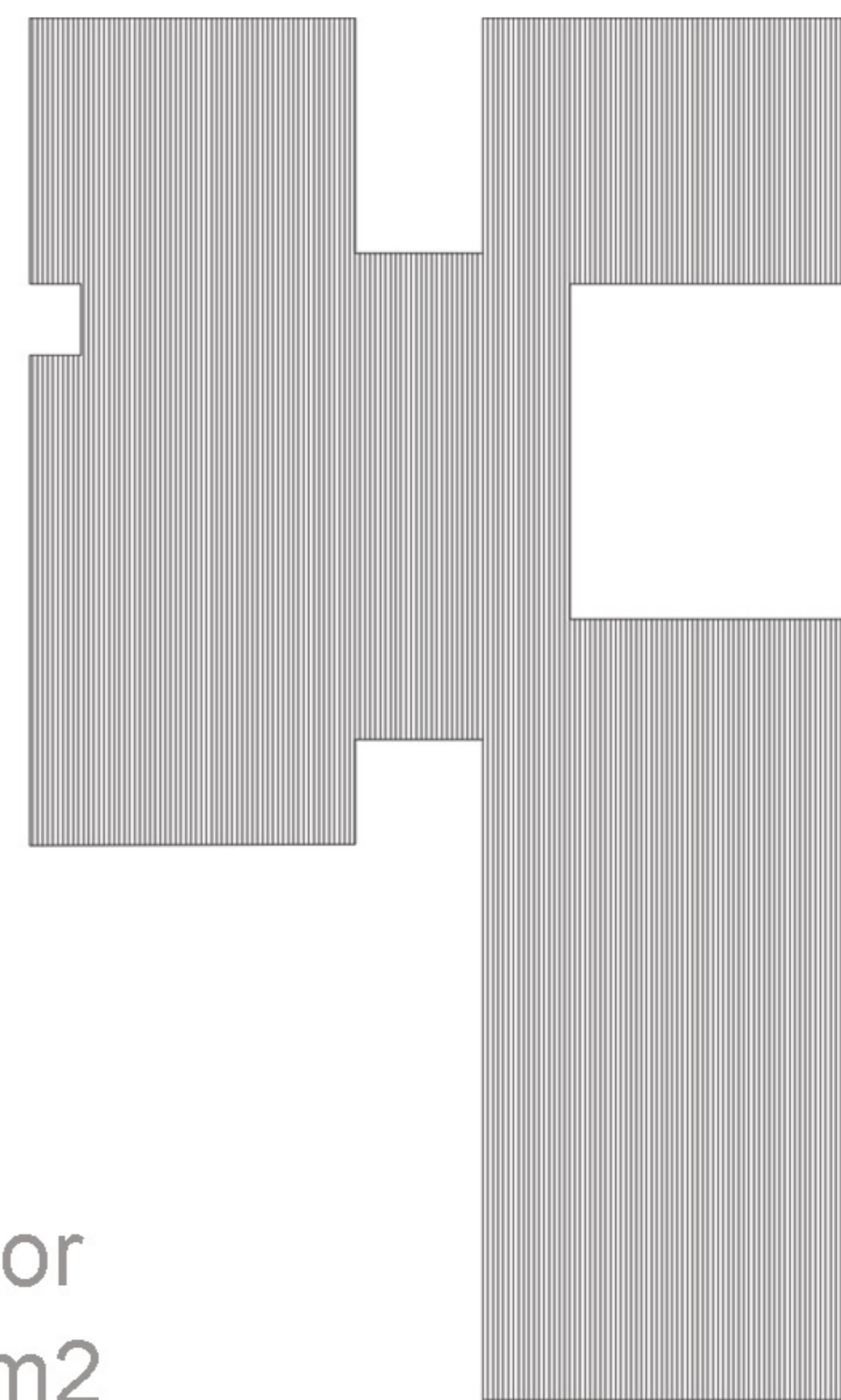
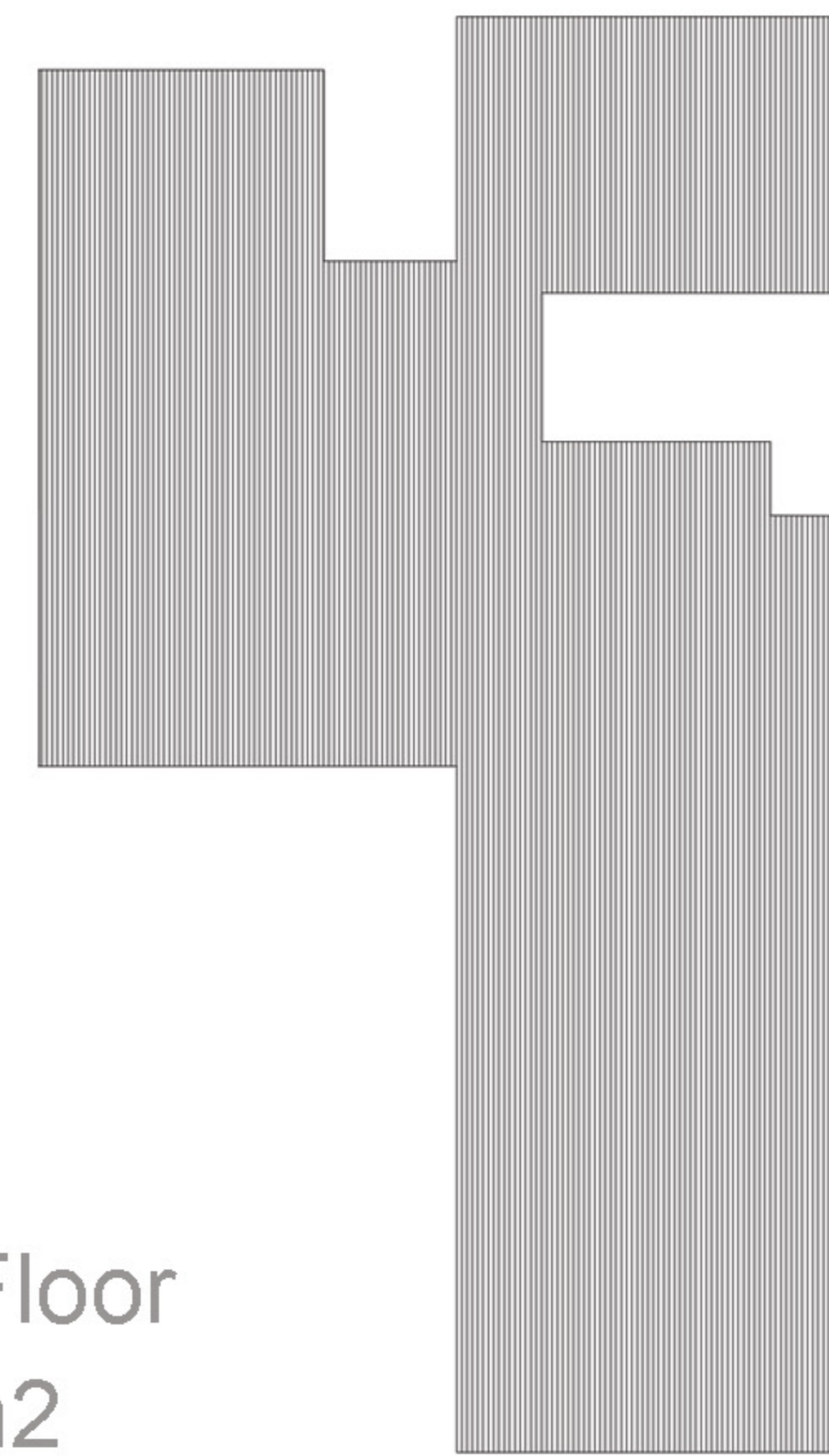
- ① Parking
- ② Pool
- ③ Fire place
- ④ Entrance
- ⑤ Living Room
- ⑥ Dining Room
- ⑦ Kitchen
- ⑧ Kitchen
- ⑨ TV Room
- ⑩ wc
- ⑪ Guest Room
- ⑫ Closet Room
- ⑬ Bathroom
- ⑭ Staff Room
- ⑮ Courtyard



- ① Access
- ② Main Gathering Space
- ③ Barbeque
- ④ Dining Space
- ⑤ Private Space
- ⑥ Cozy Gathering space
- ⑦ Void

Ground Floor
270.85 m²

First Floor
283.40 m²



Roof Garden Plan

Renders









Renders



Renders

Renders



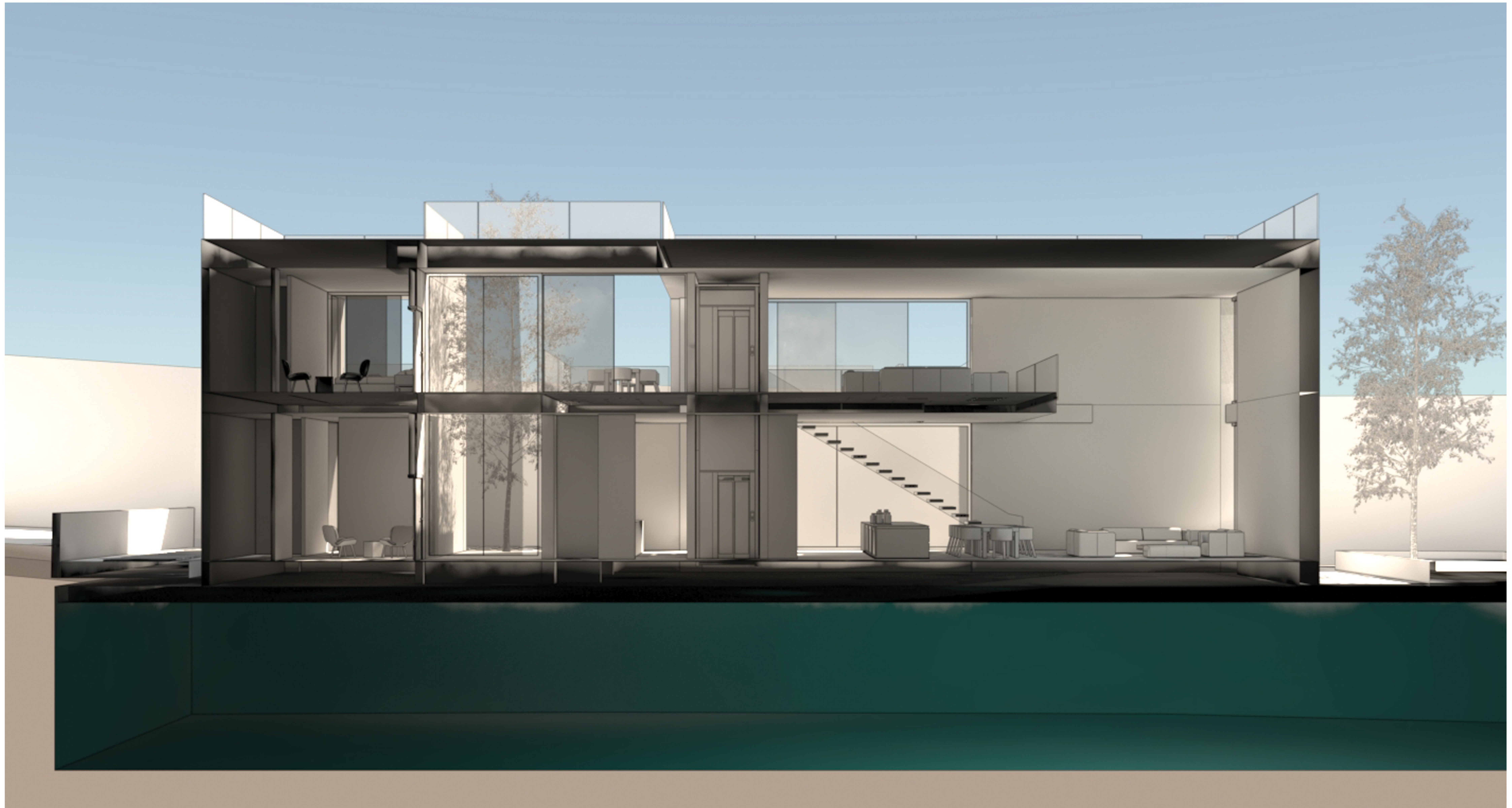
Renders



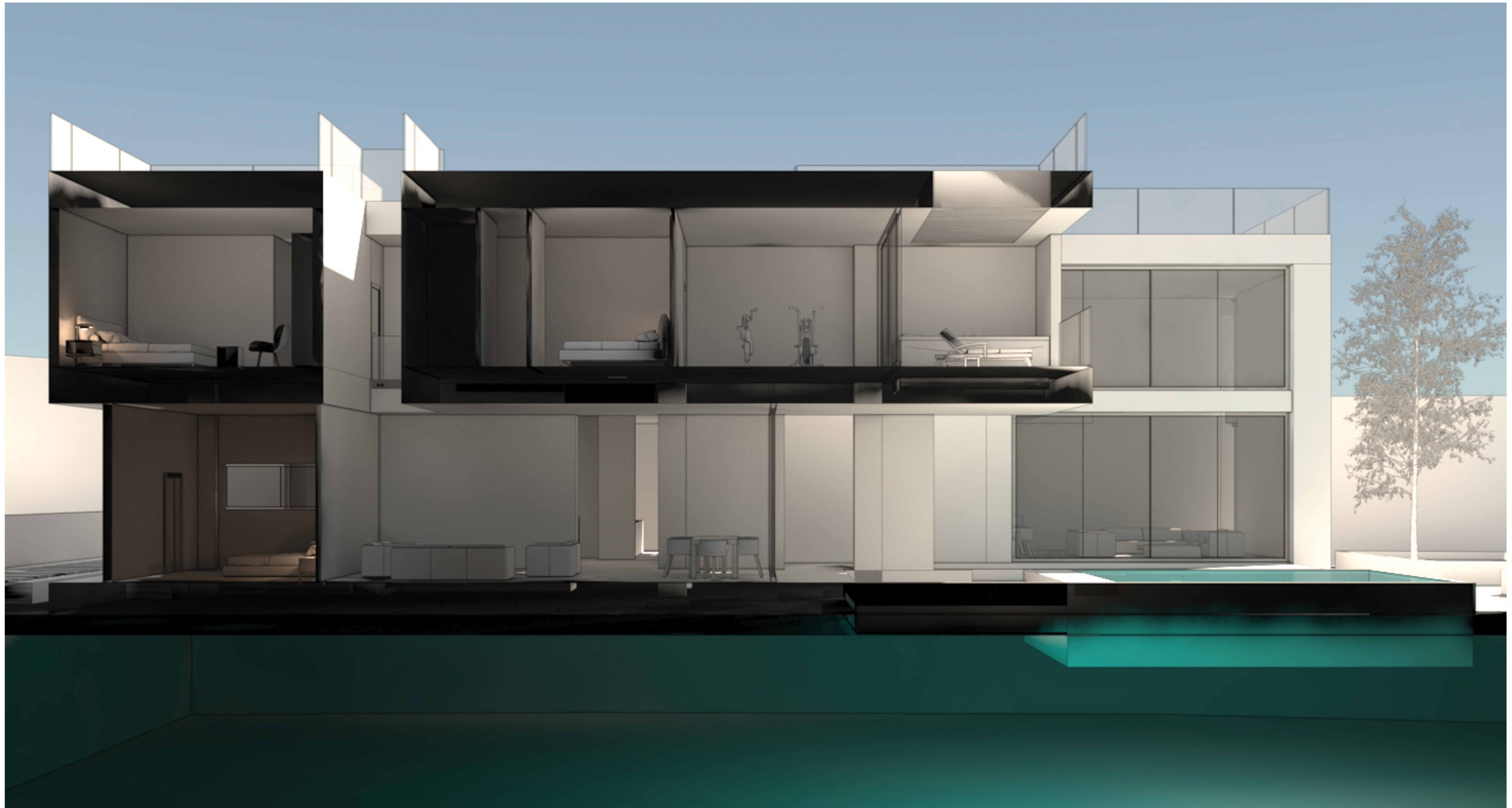




Sections



Sections



Sections

