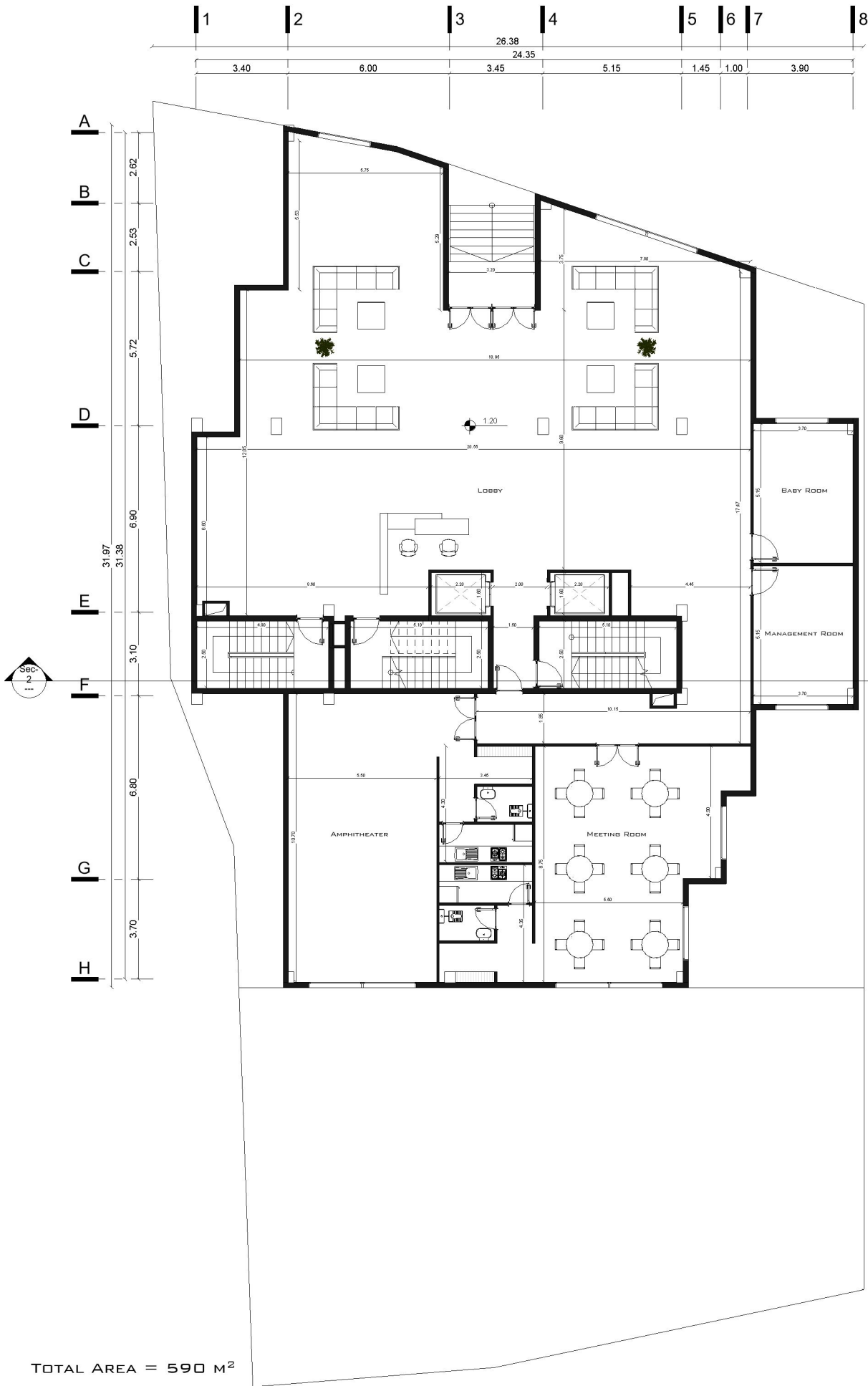


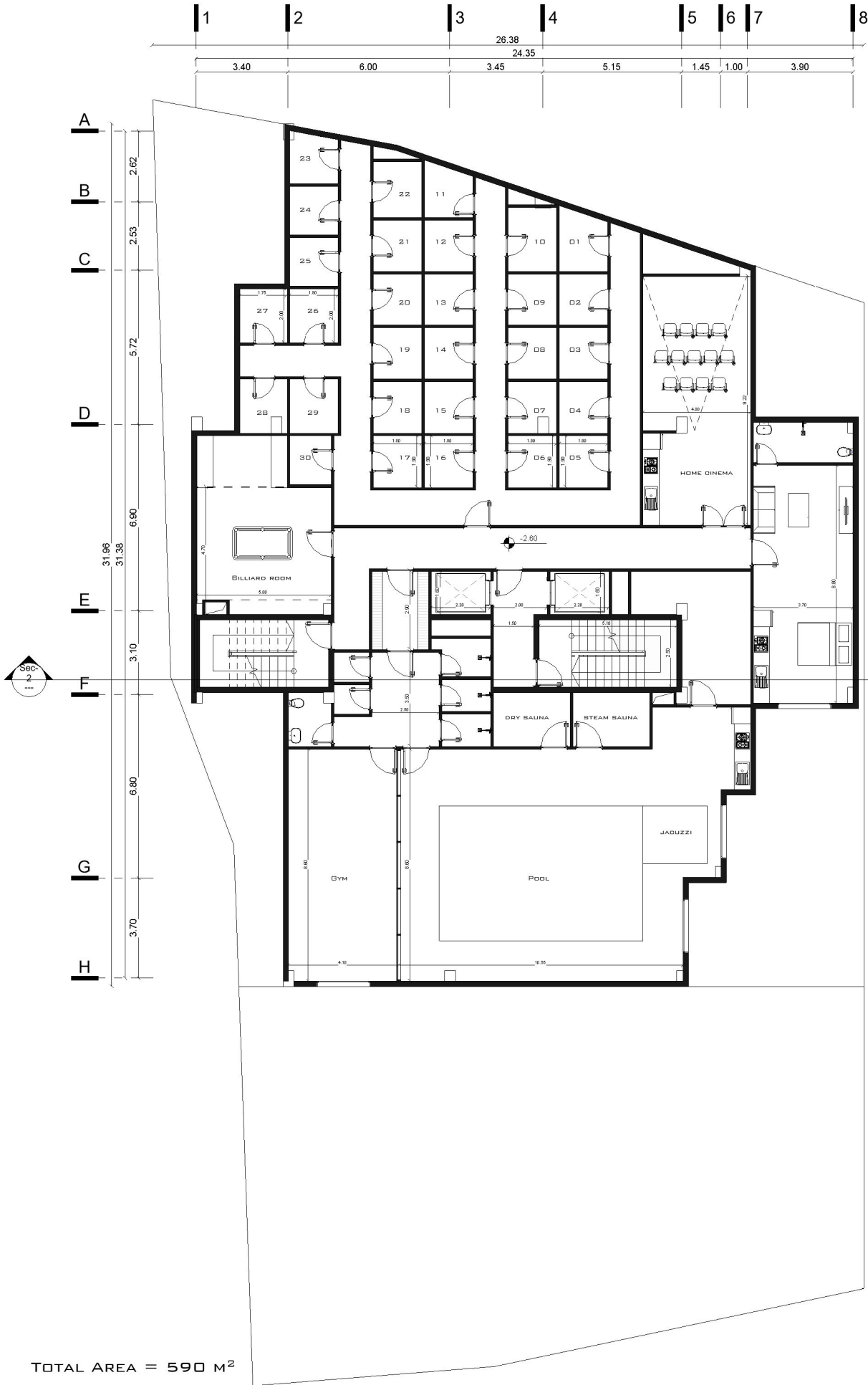
TOTAL AREA = 604 M²
TYPICAL FLOOR PLAN



TOTAL AREA = 604 M²
TYPICAL FLOOR PLAN



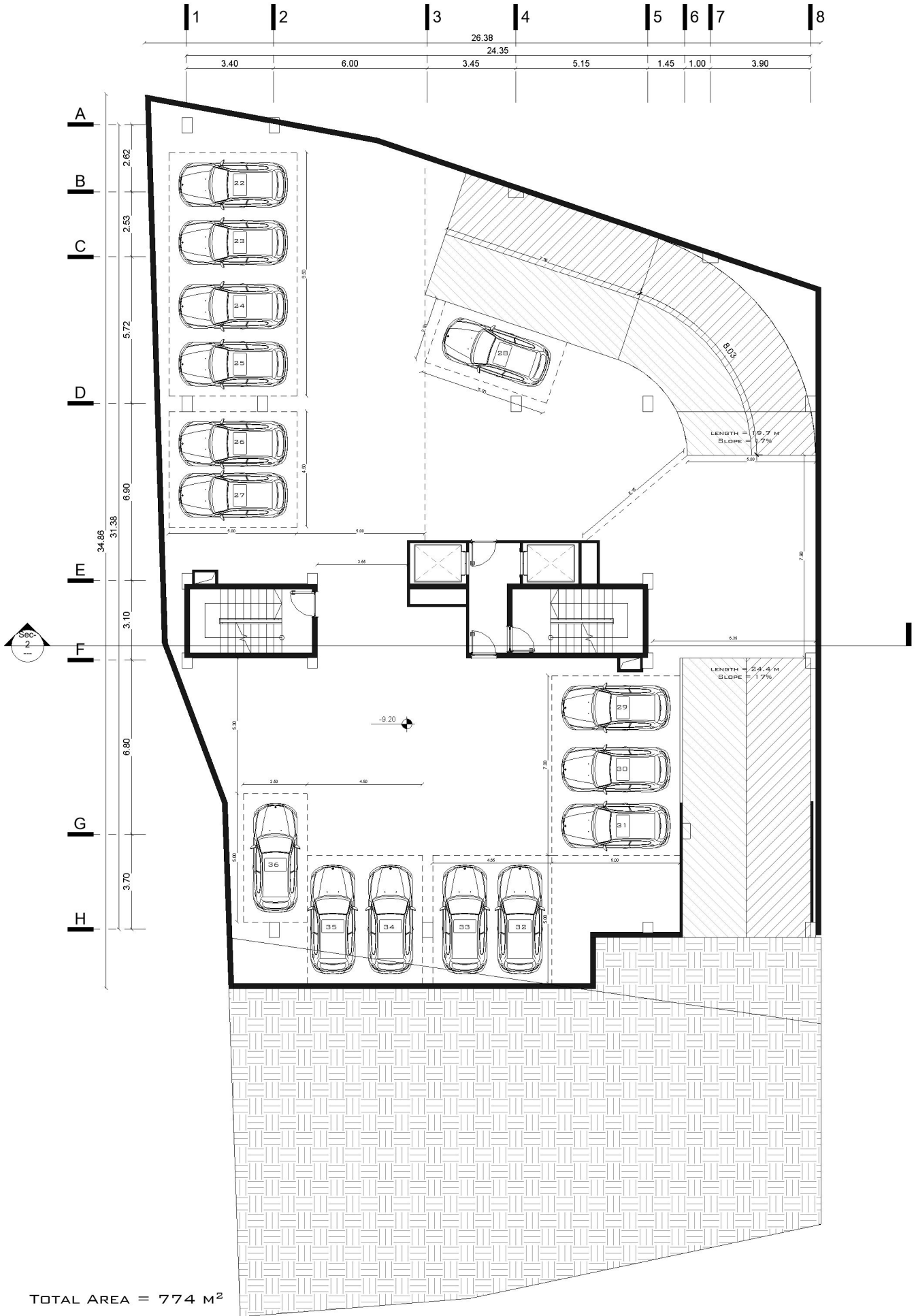
TOTAL AREA = 590 M²
GROUND FLOOR PLAN



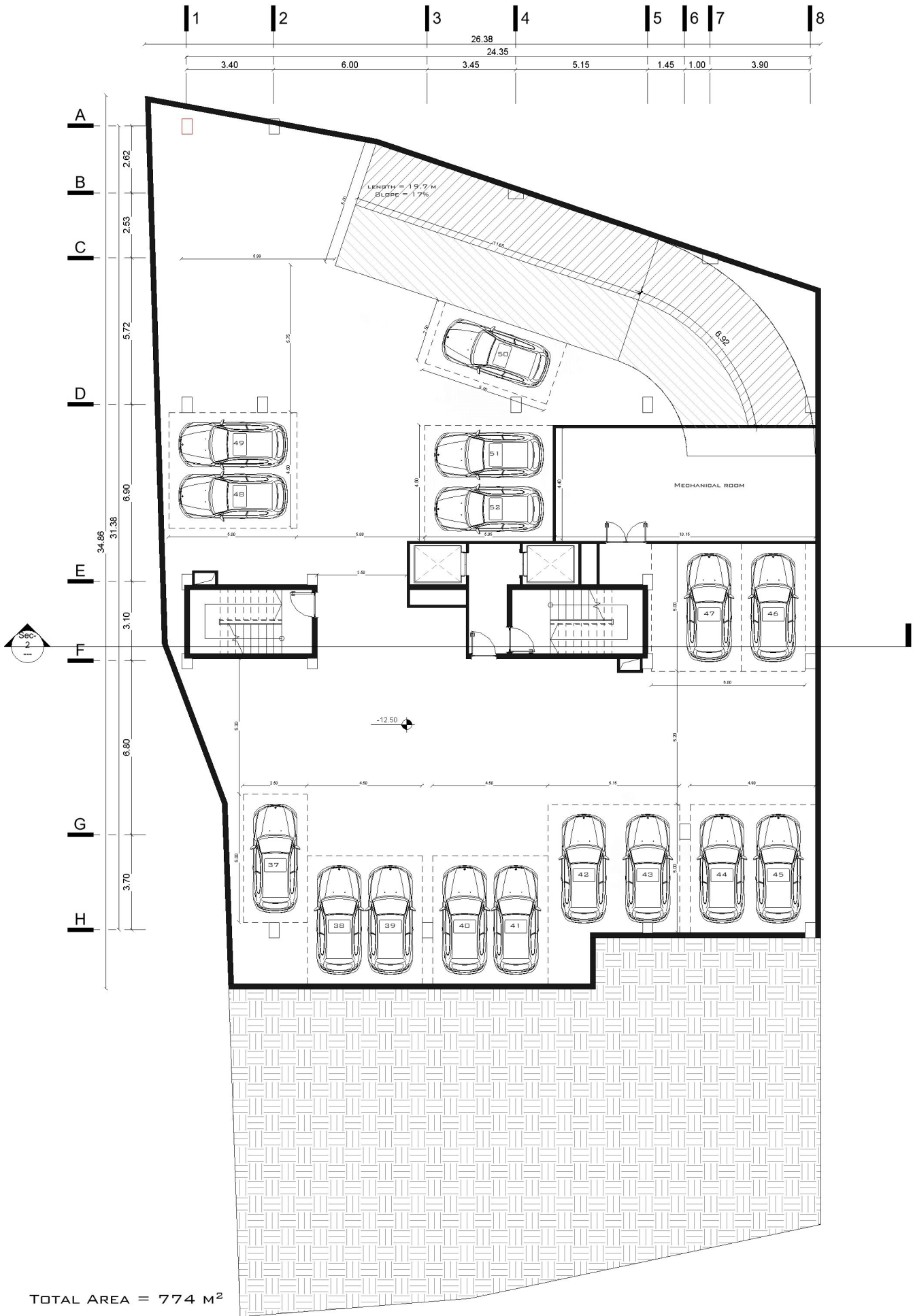
TOTAL AREA = 590 M²
- 1 BASEMENT PLAN



TOTAL AREA = 744 M²
-2 BASEMENT PLAN



TOTAL AREA = 774 M²
-3 BASEMENT PLAN



TOTAL AREA = 774 M²
-4 BASEMENT PLAN