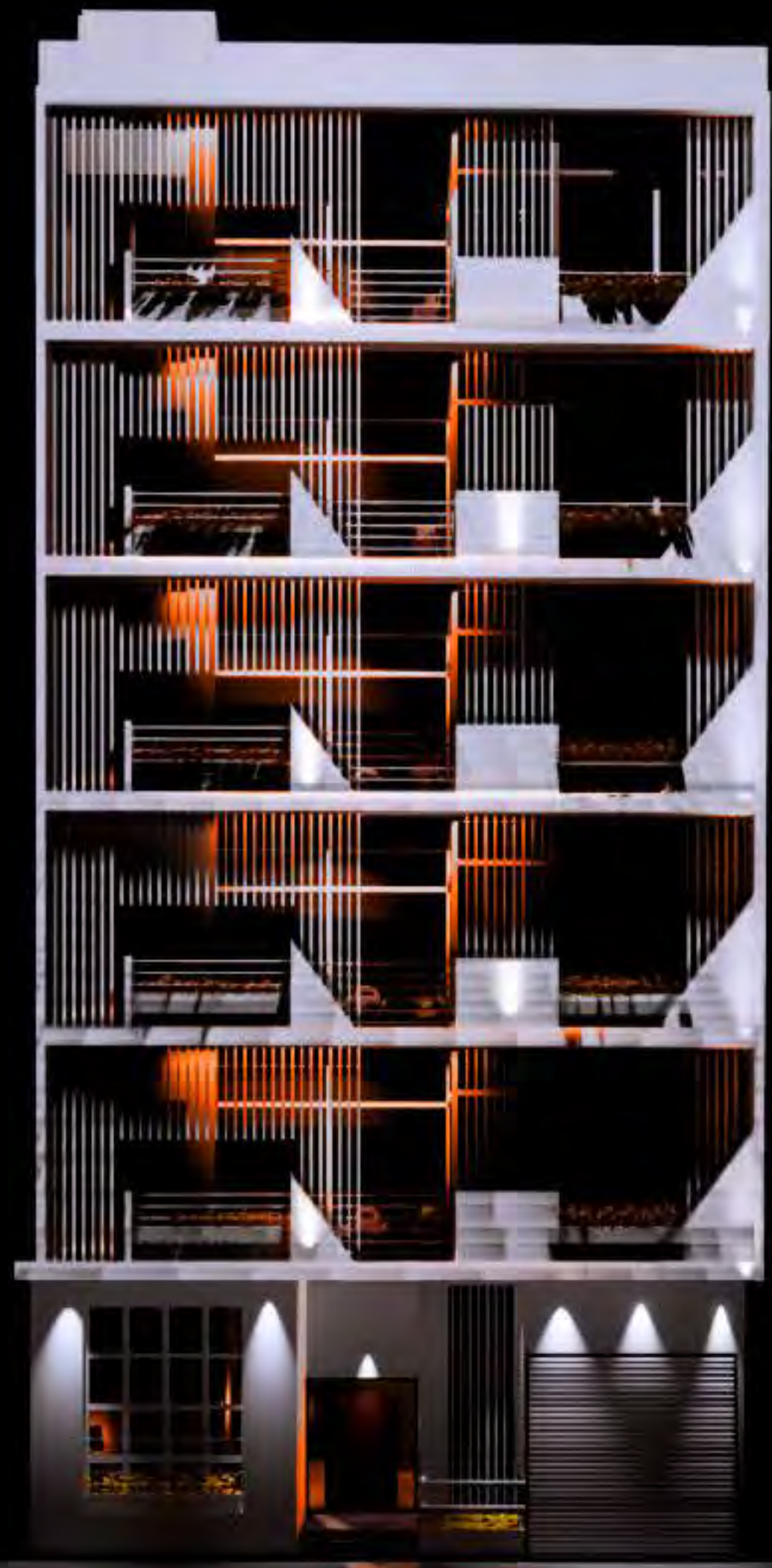
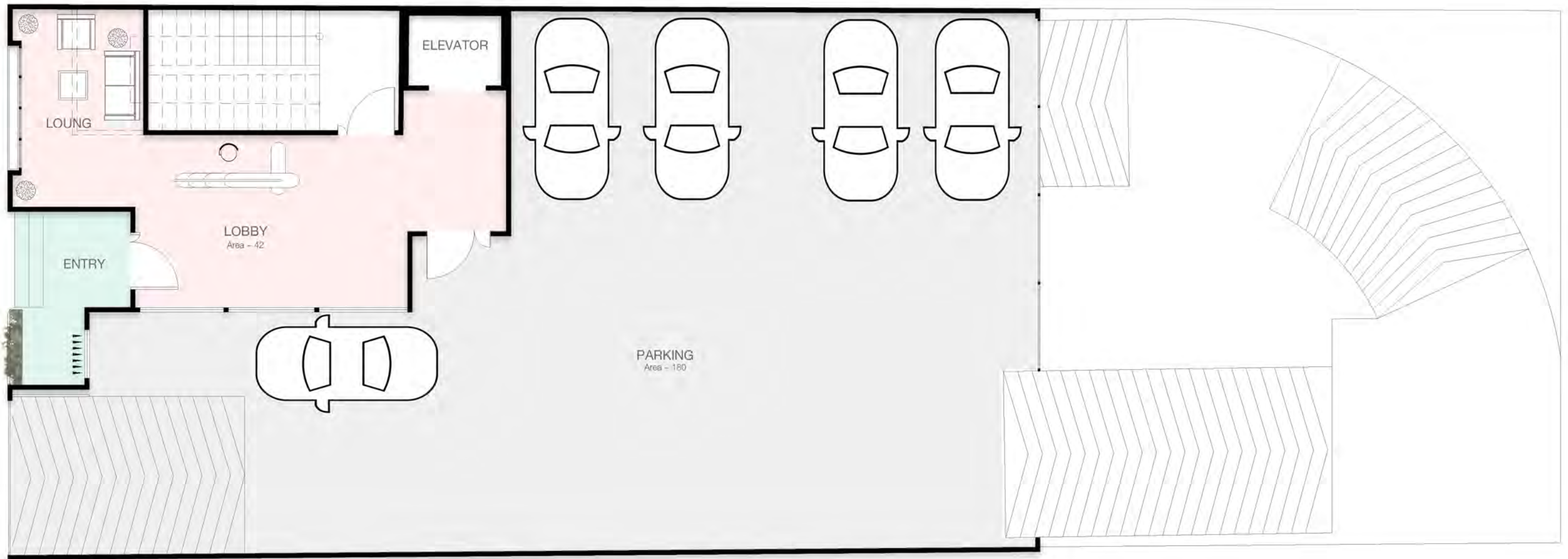




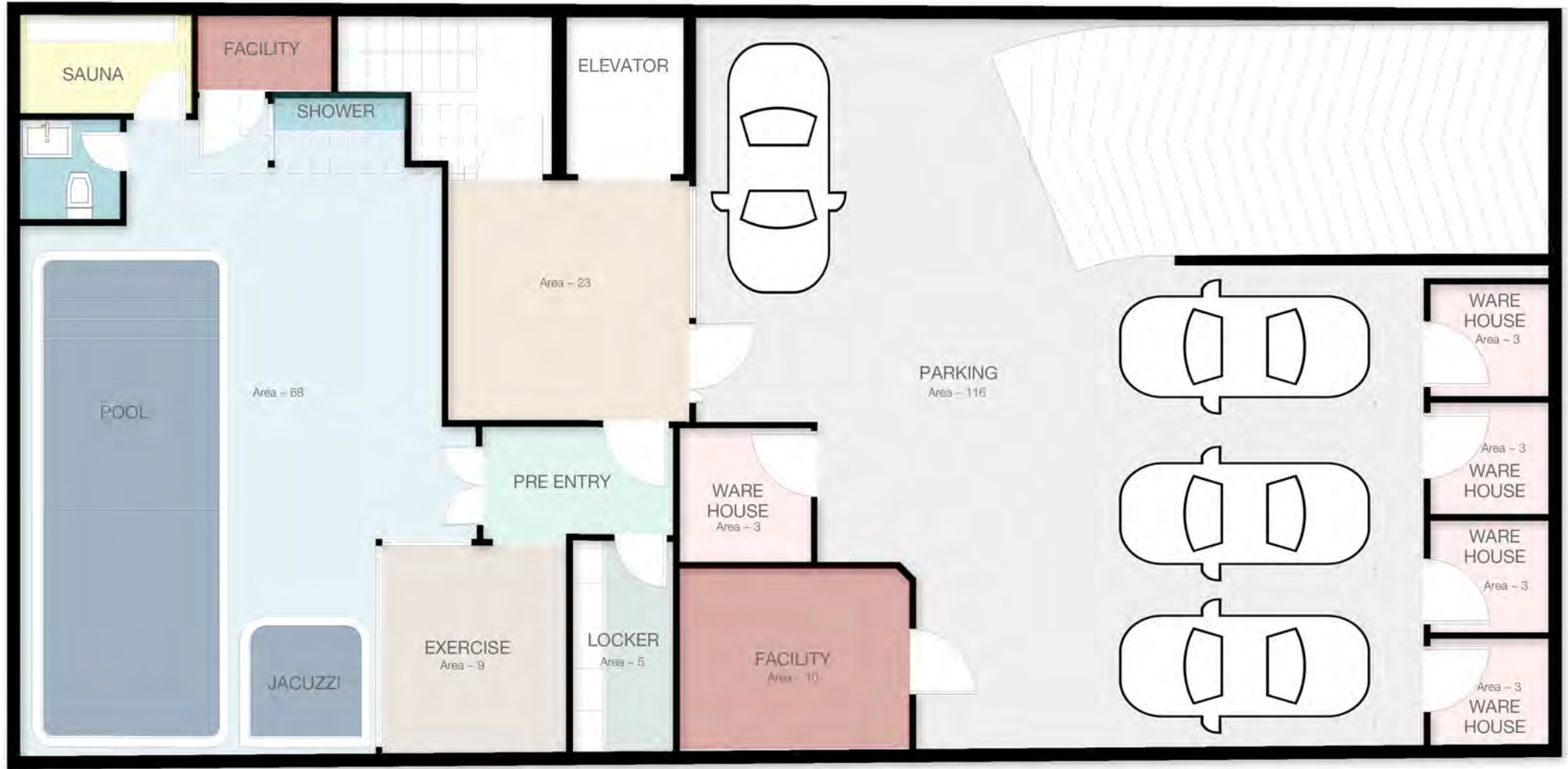
MG RESIDENTIAL







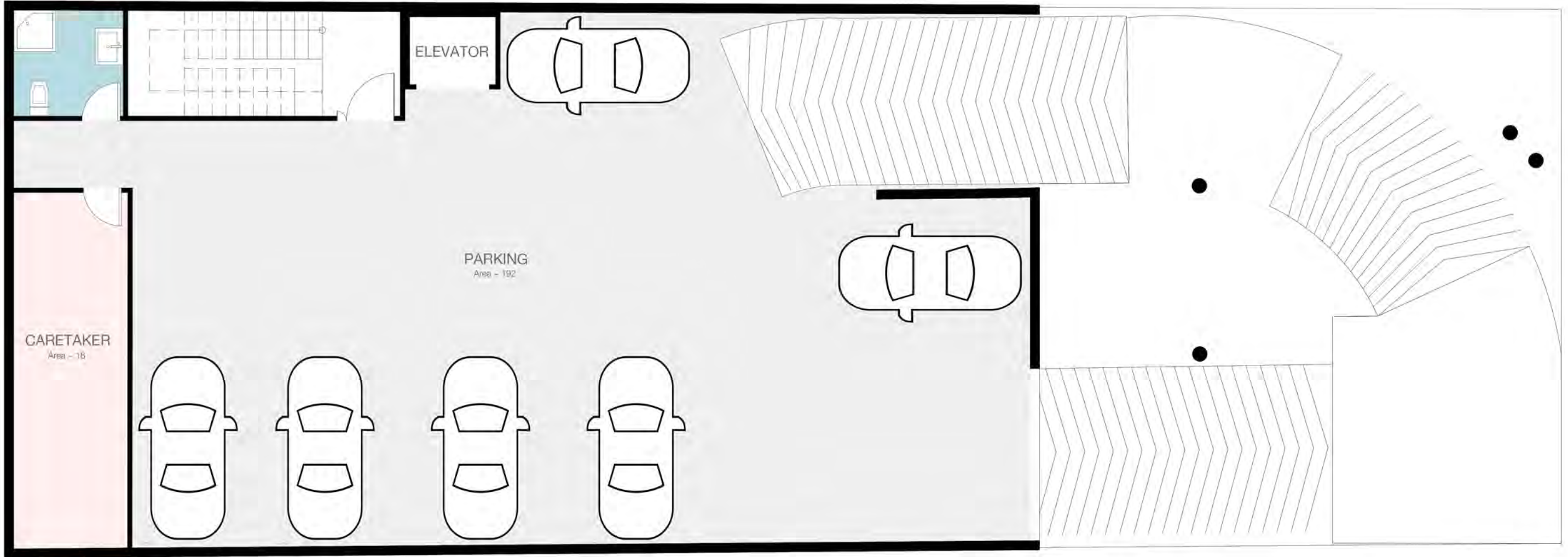
LOBBY



-2 POOL



RESIDENTIAL

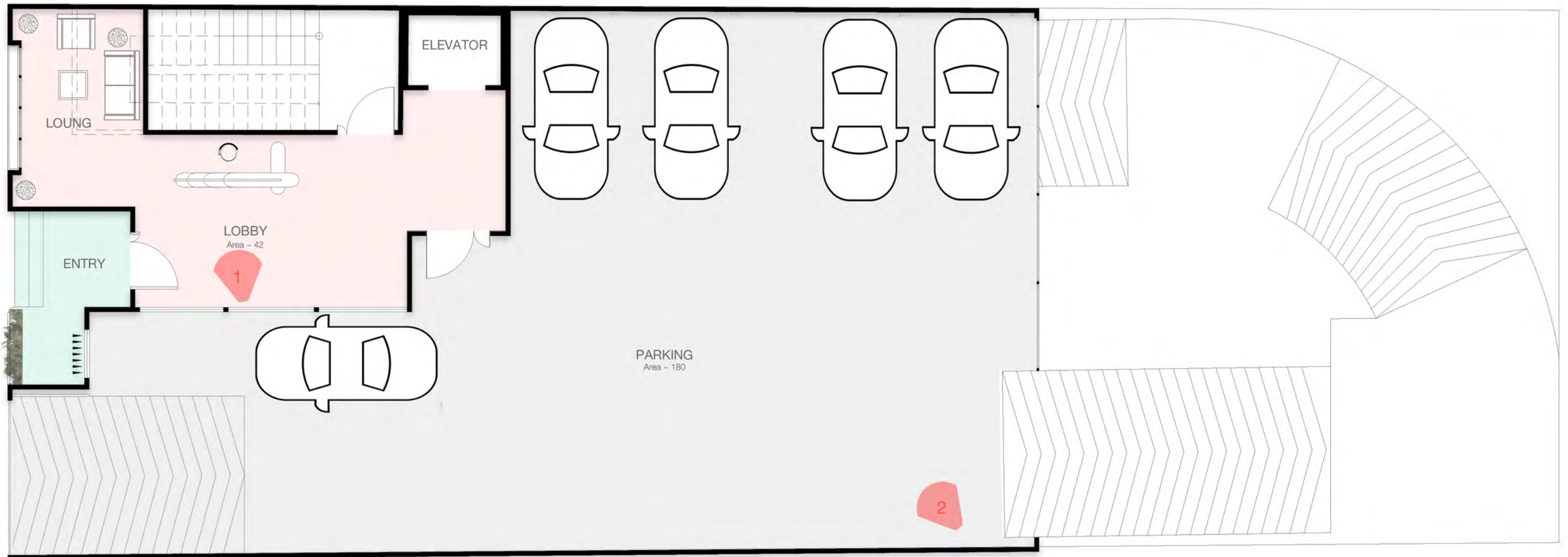




1

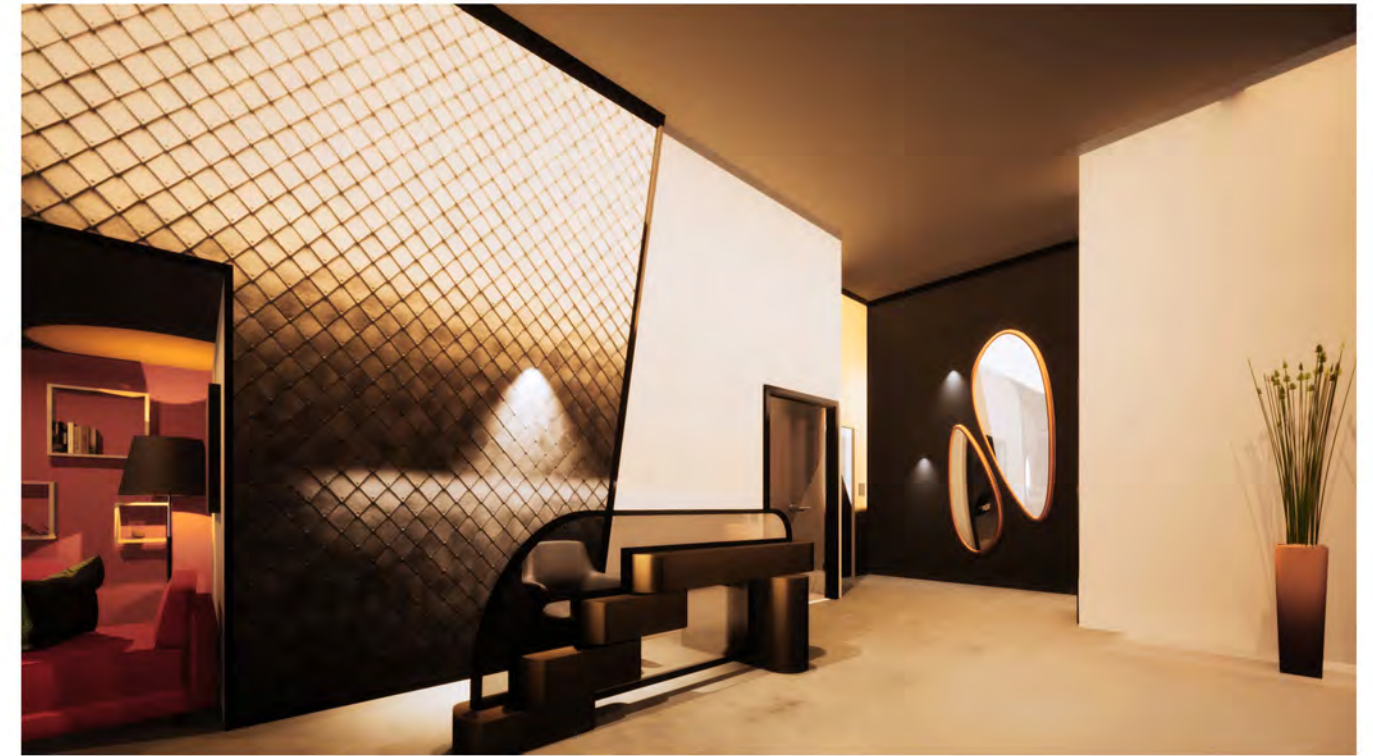


2

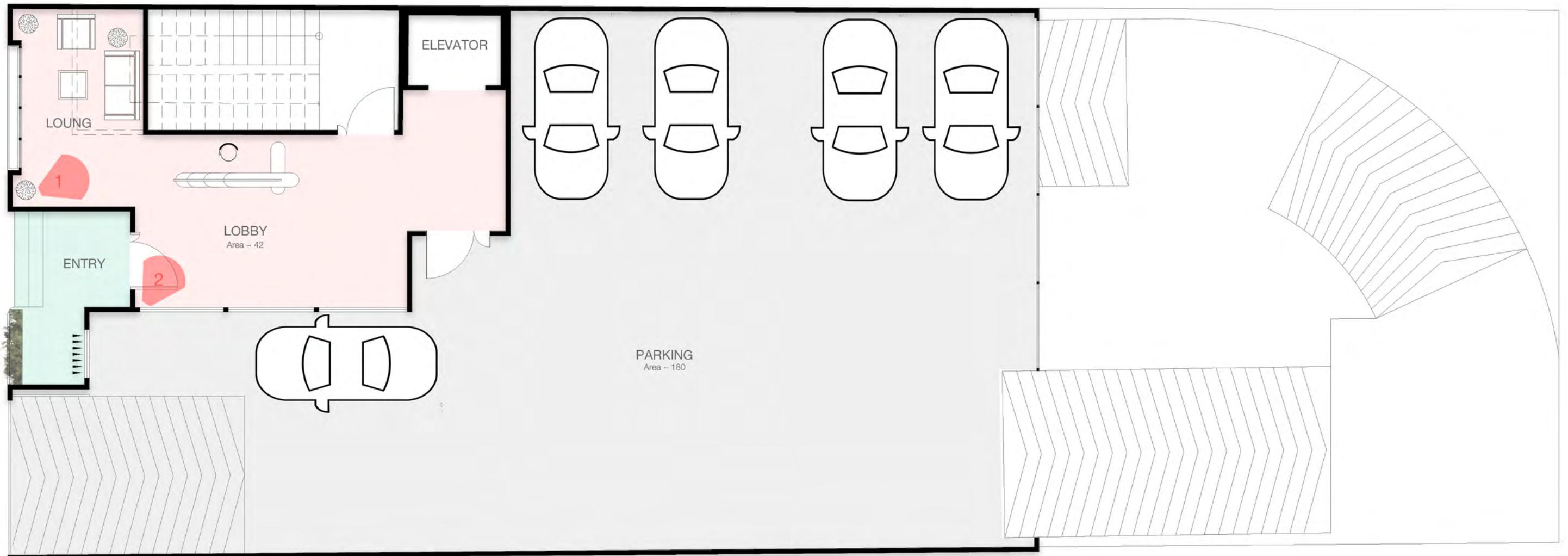




1



2





1



2

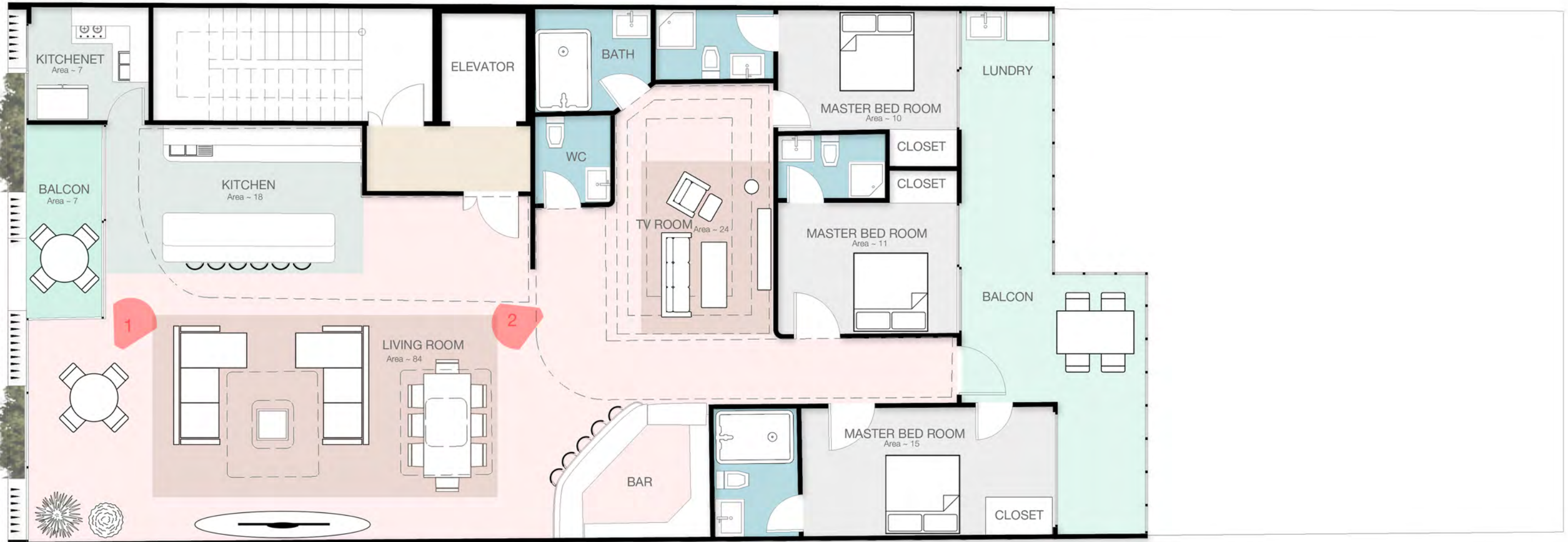


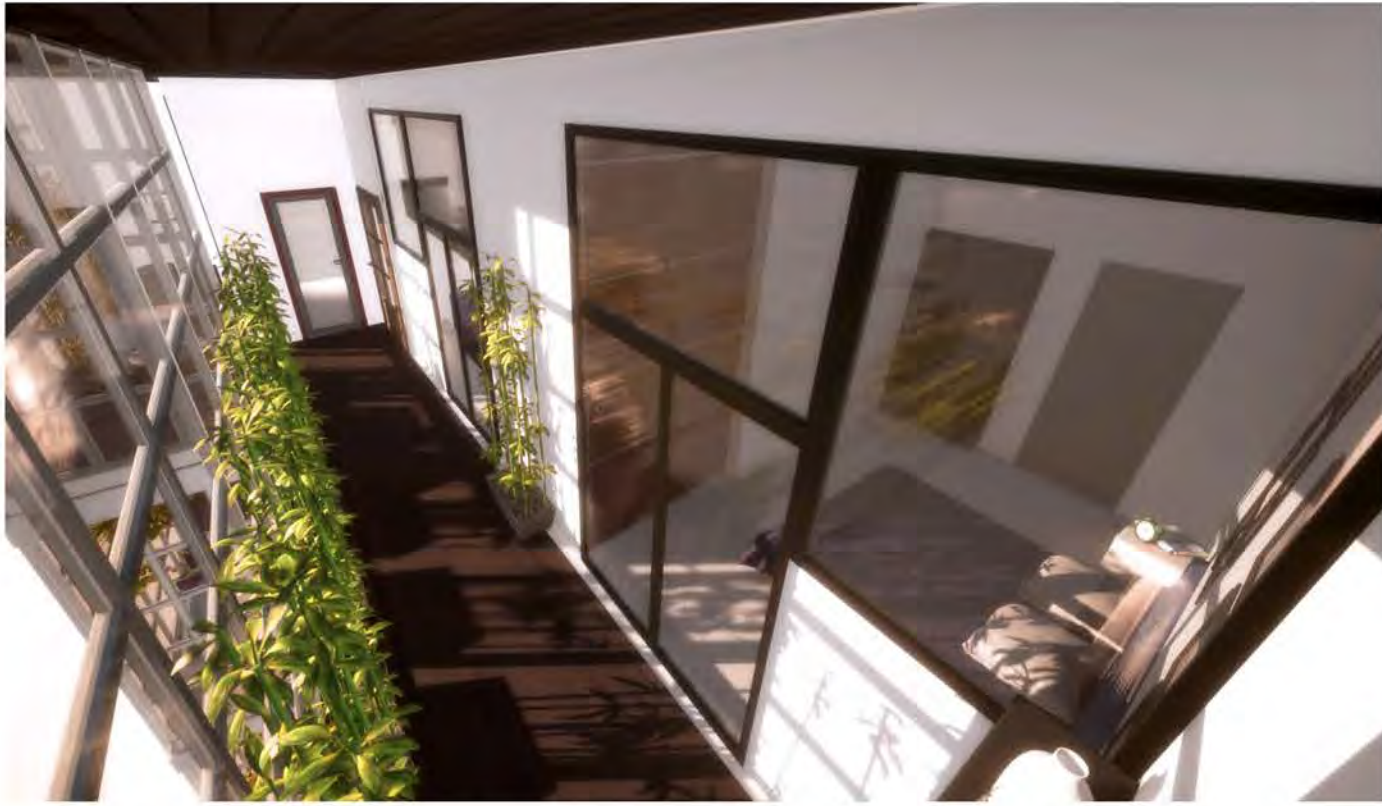


1

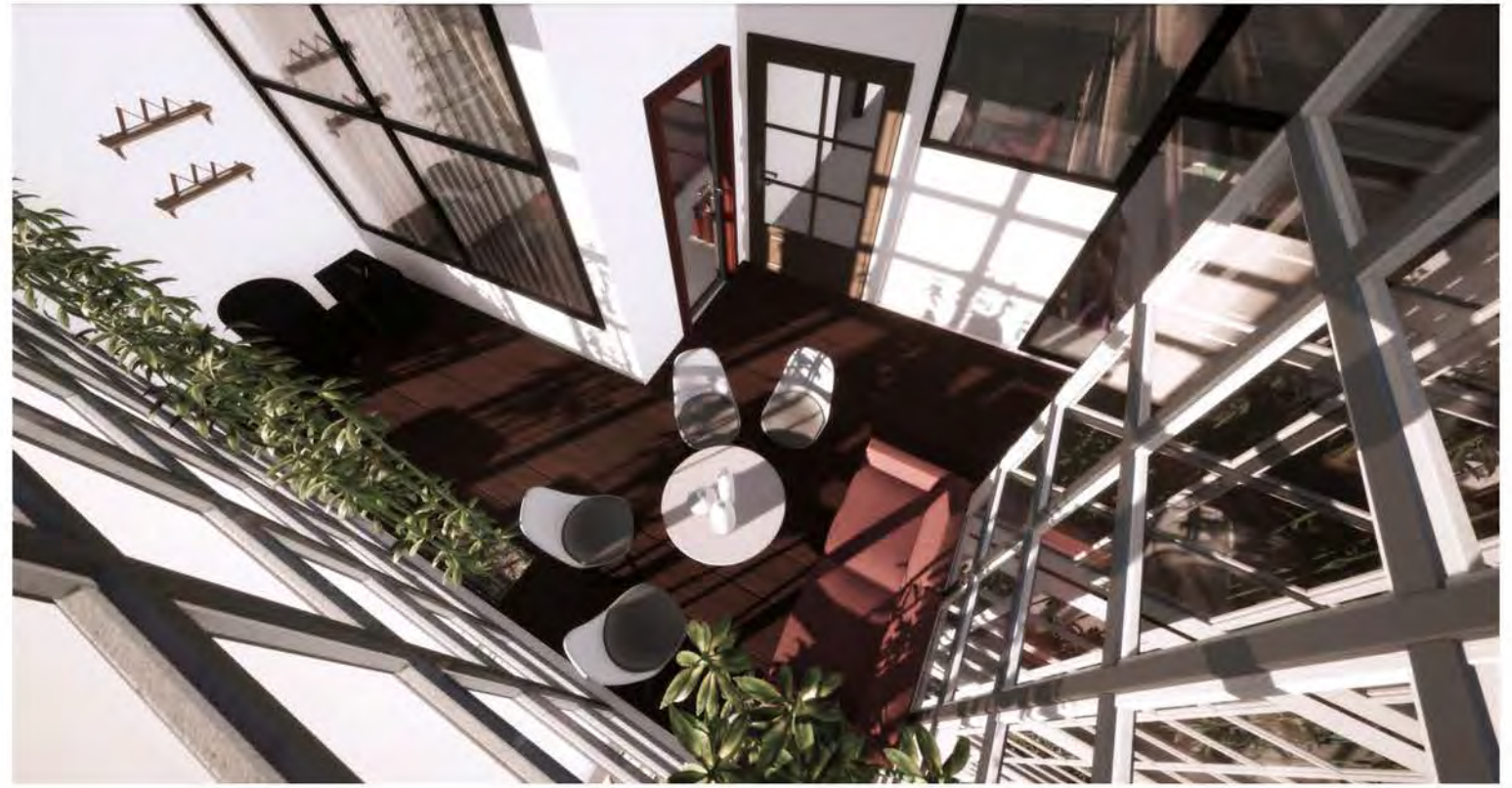


2





1



2

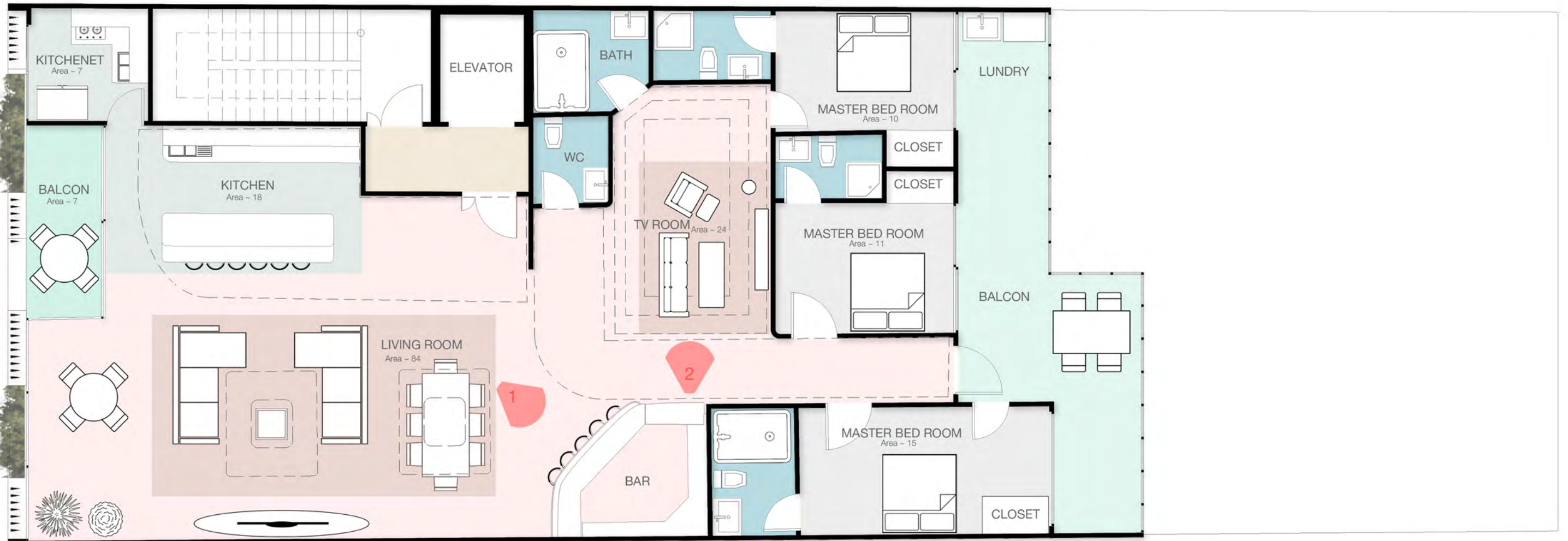




1



2





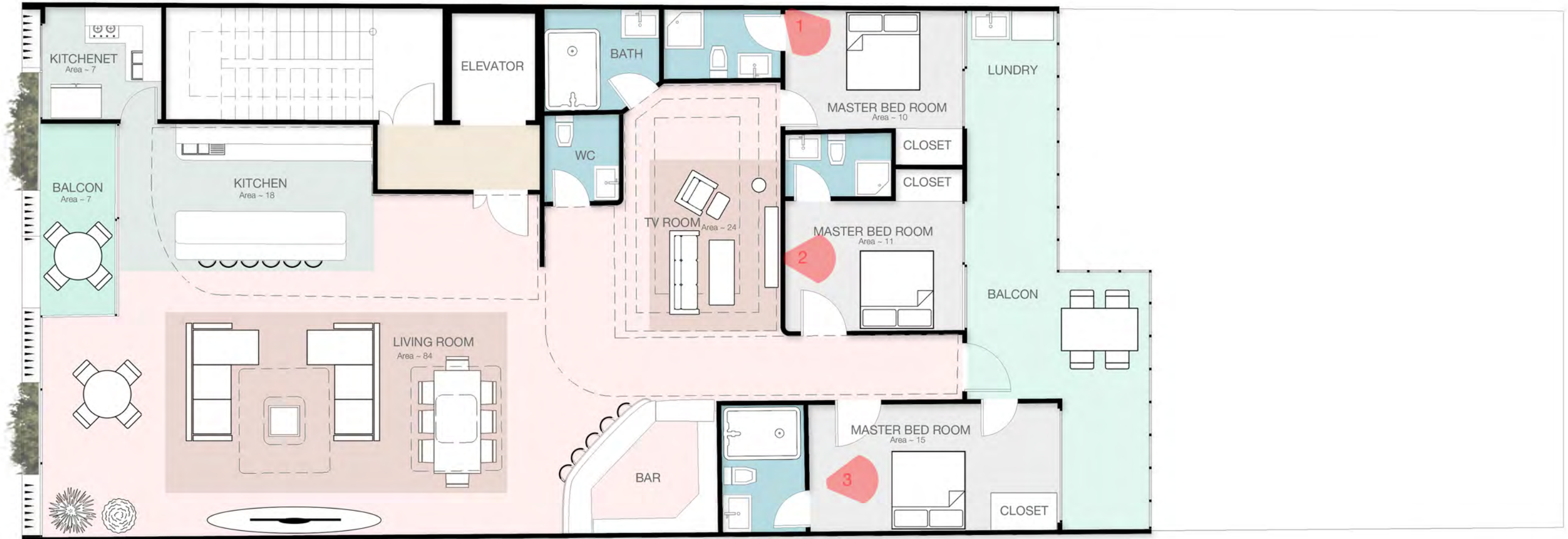
1

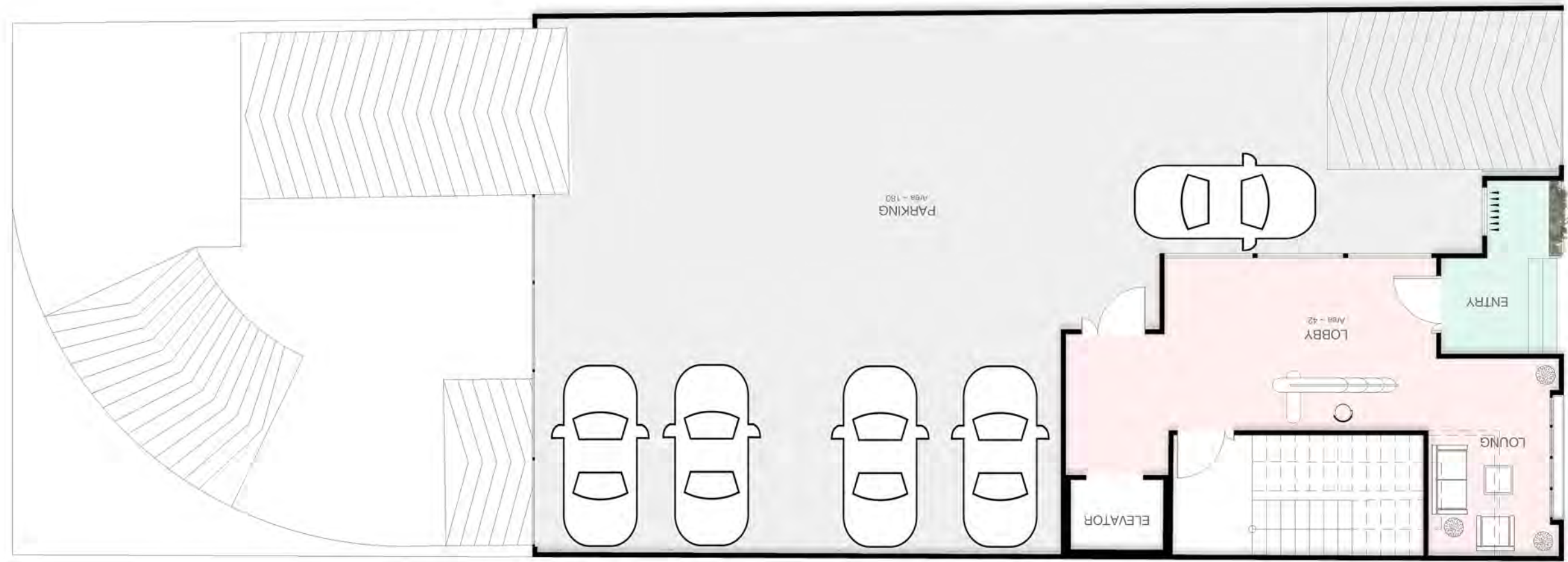
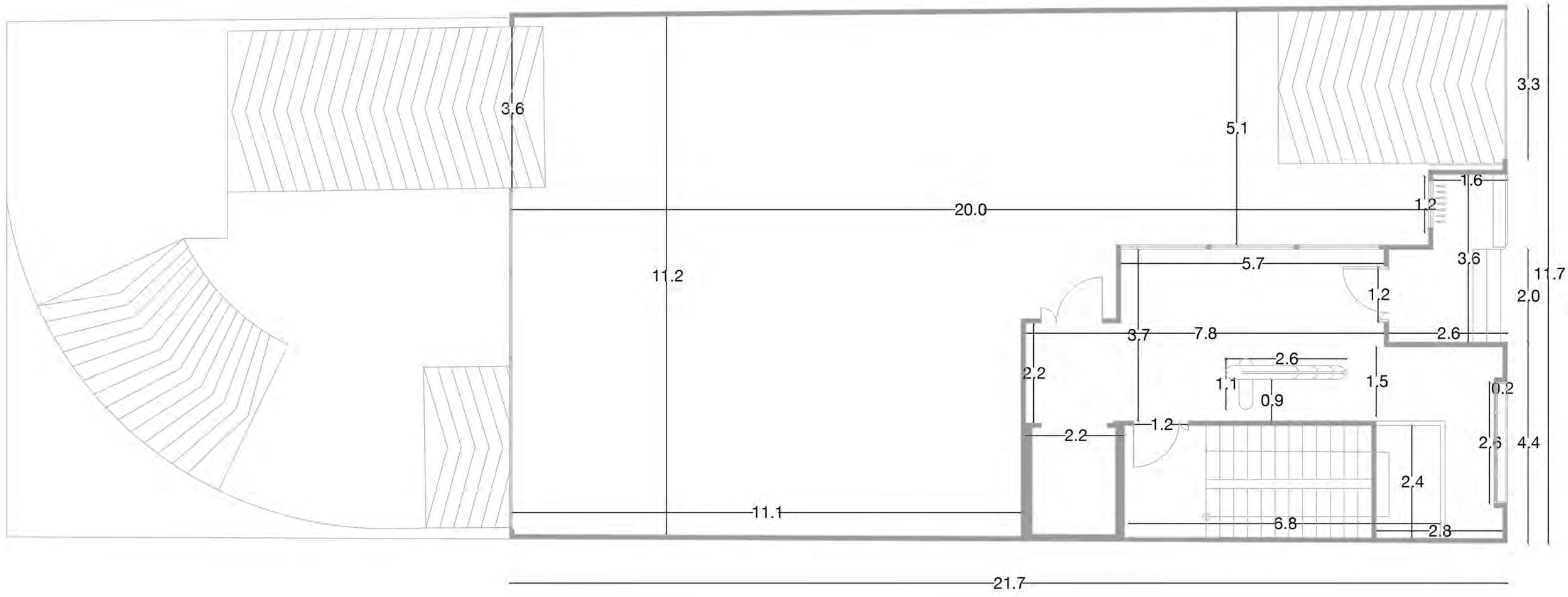


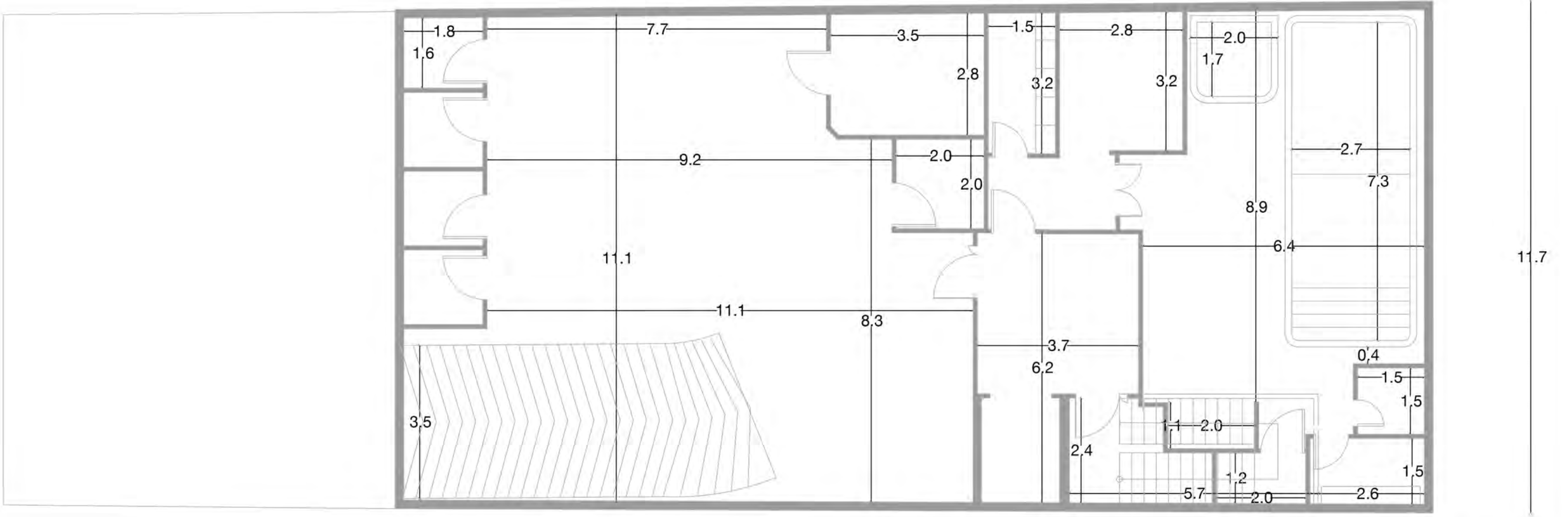
2



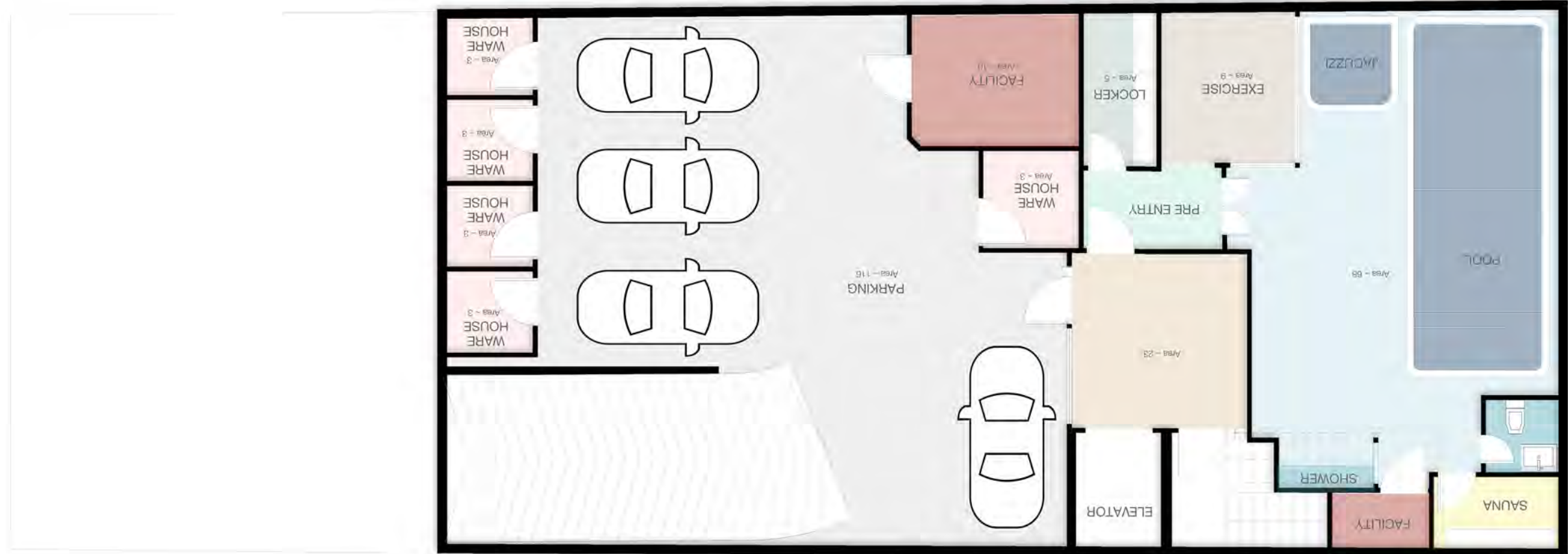
3



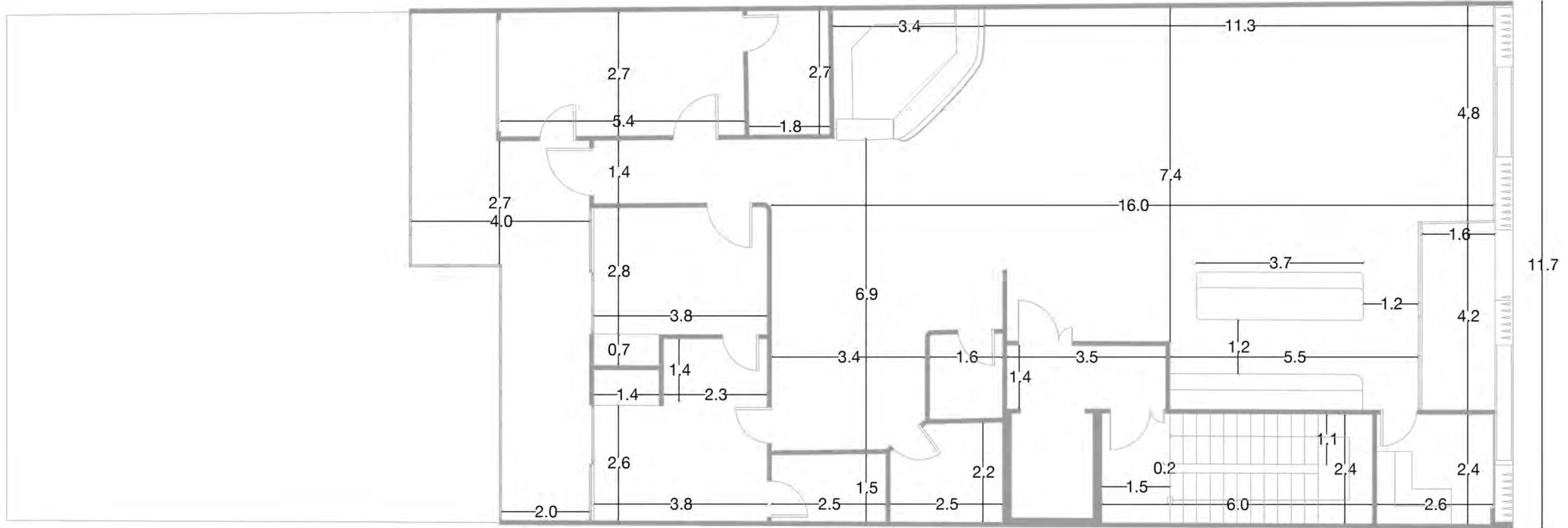




23.7



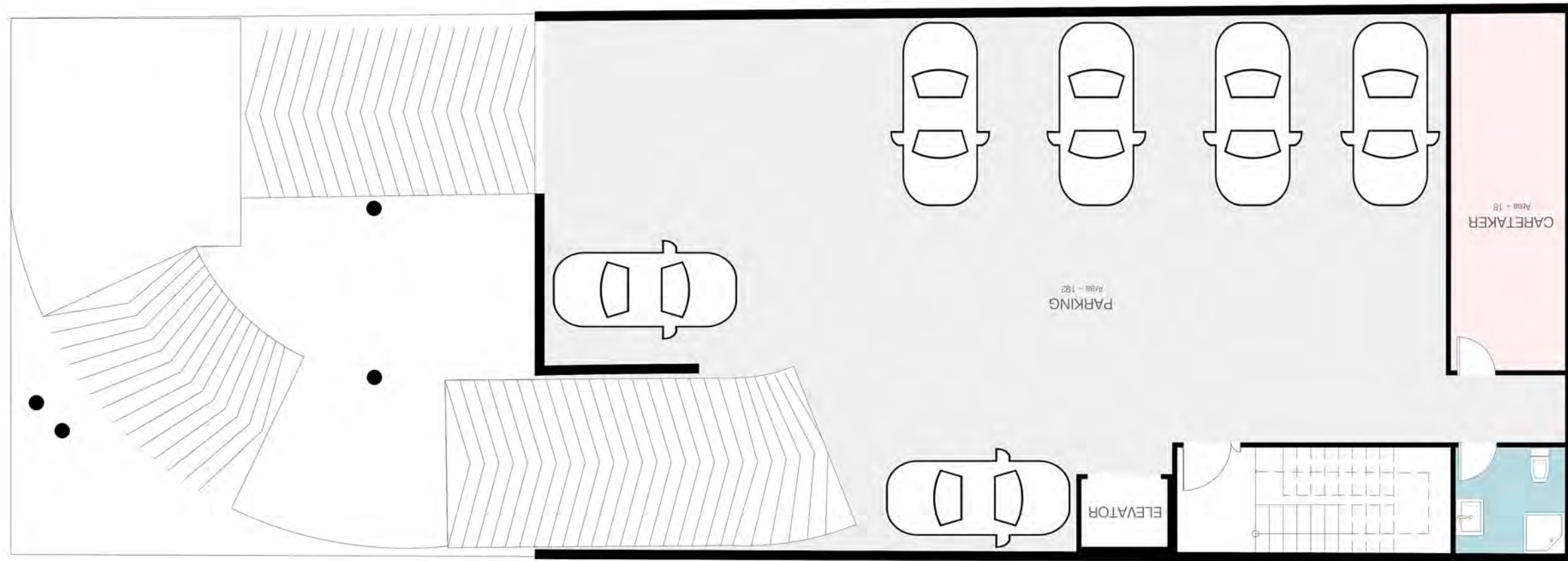
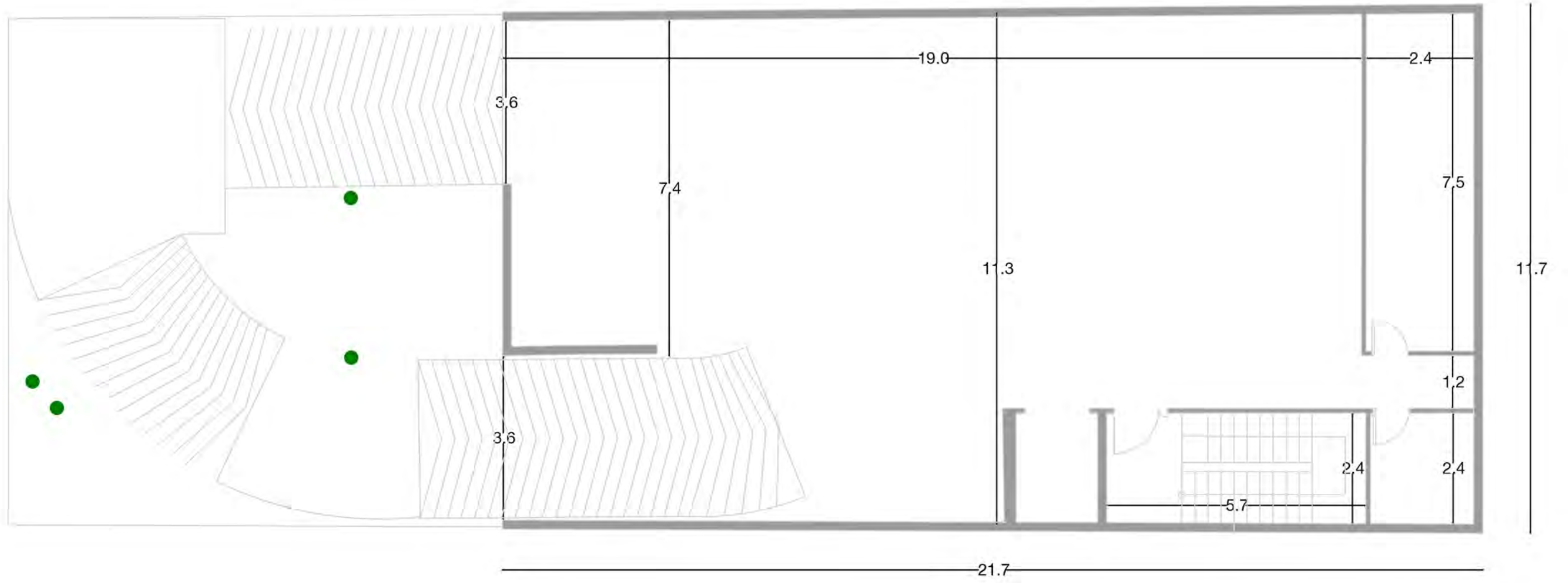
24.5

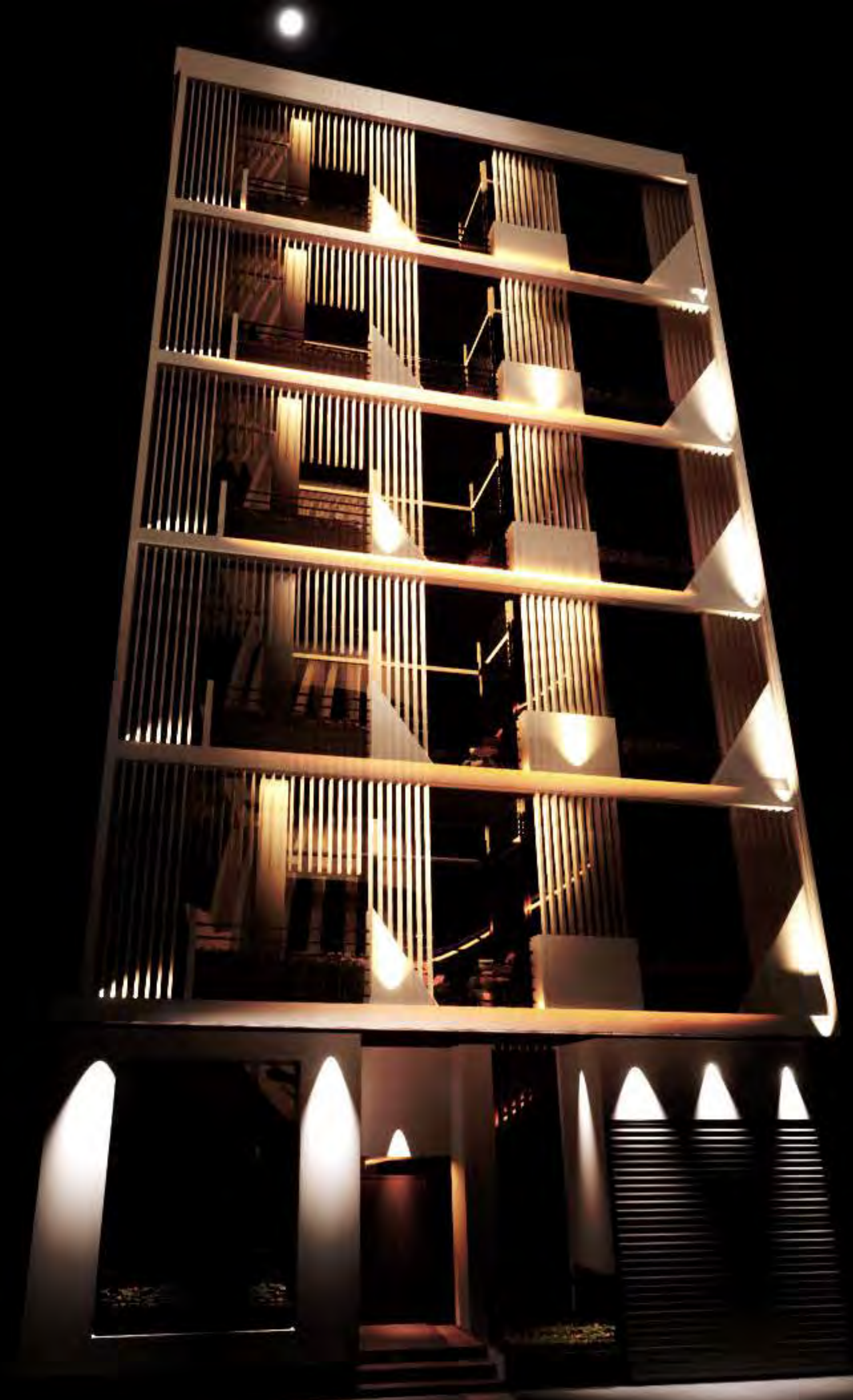


11.7

22.5





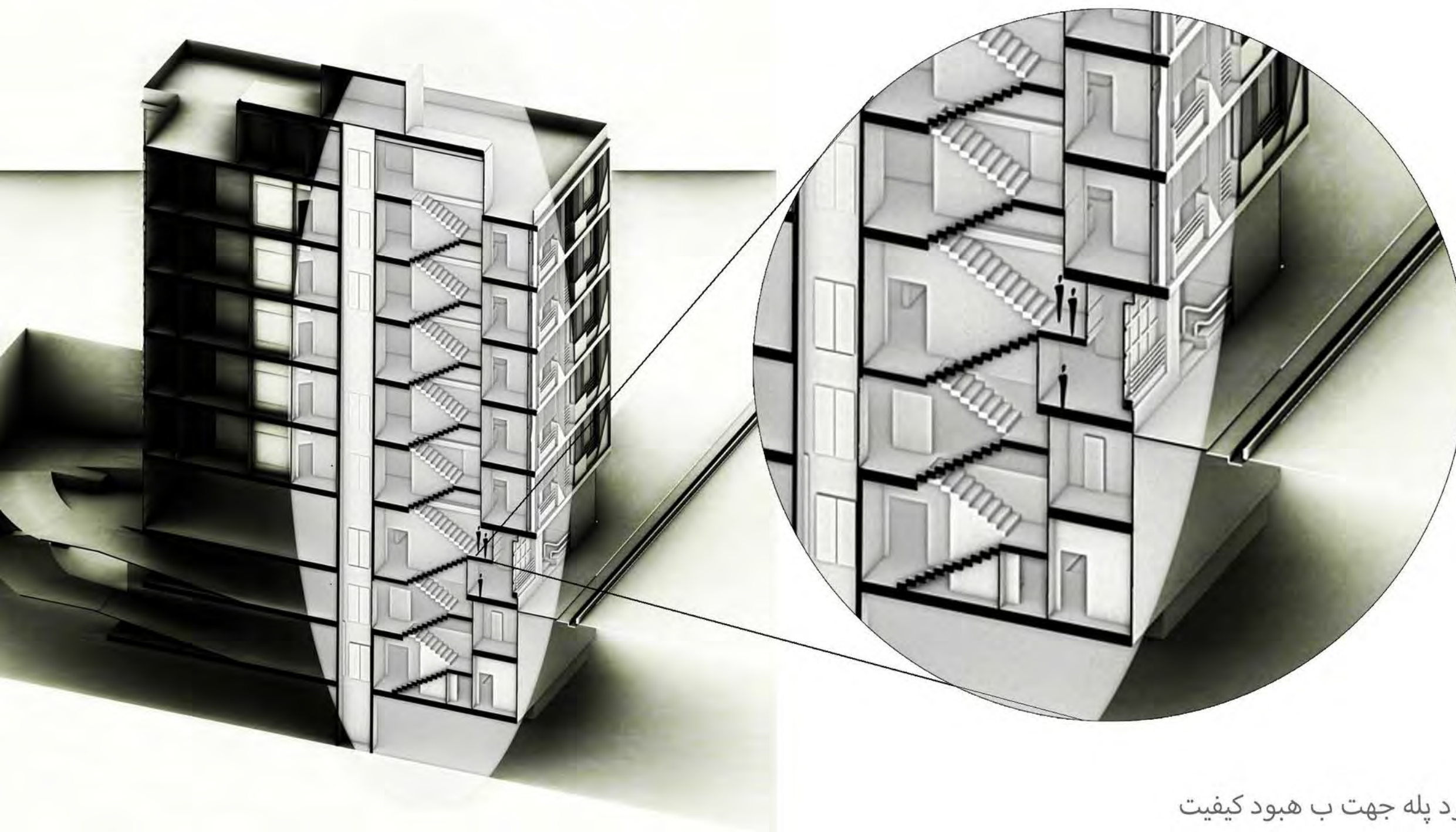












استفاده از فضای زیر پاگرد پله جهت بهبود کیفیت فضای مجاور در قسمتی از باکس پله با توجه به سرگیر نبودن و همچنین در قسمتی که پله به پایین ترین تراز ساختمان میرسد فضای زیر پاگرد را به لابی در طبقه همکف و در طبقه منفی ۲ این فضا را به سونا و تاسیسات آن اختصاص دادیم

