

DESIGN CONCEPT

1.
Chitgar Forest Park
2.
The Skyline Of The Trees
3.
**Using The Skyline Of The Trees
To Design The Facade**

1.

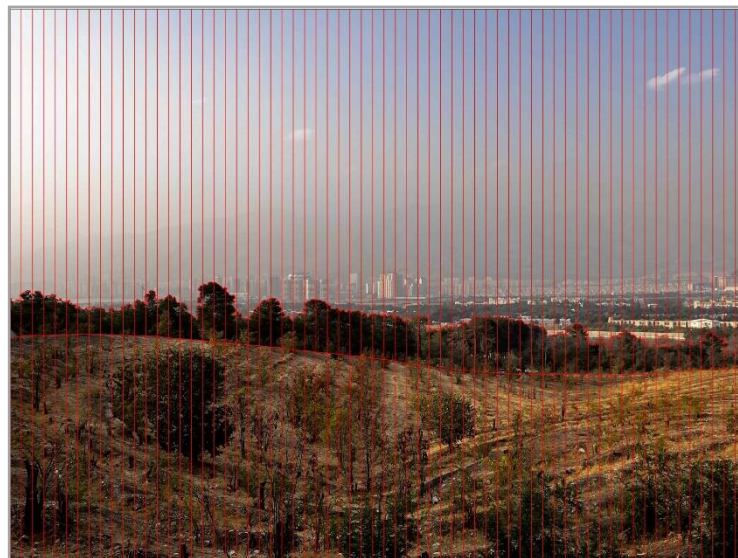


2.

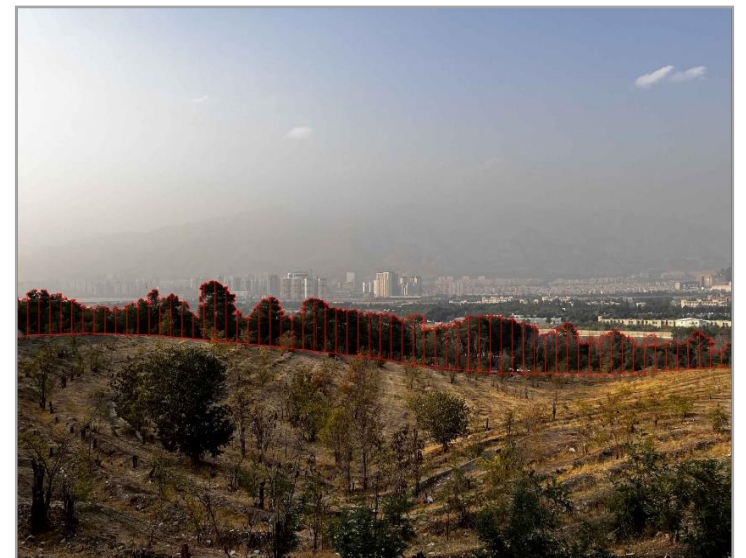


4.

3.



4.



DESIGN CONCEPT

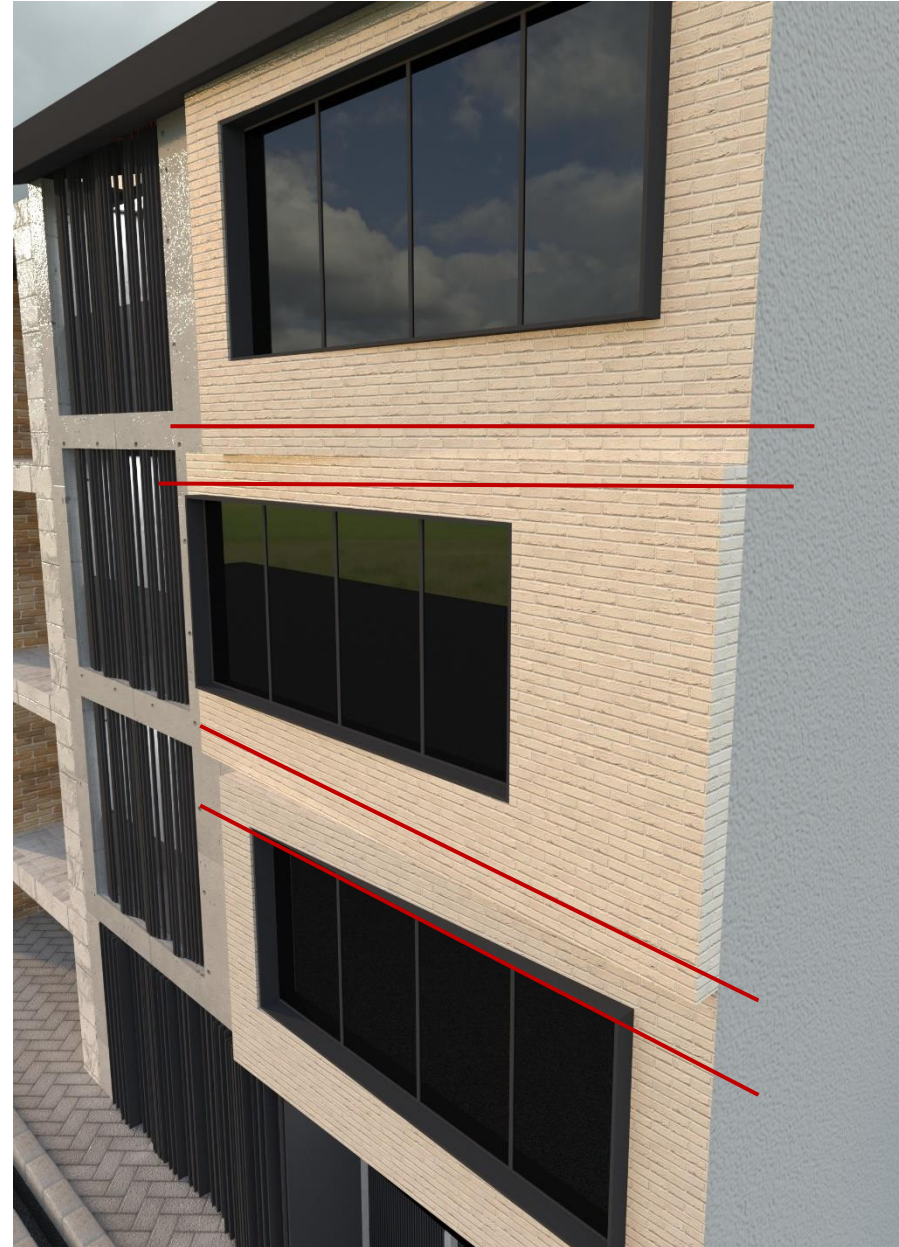
**-The Skyline Of Trees
Can Be Seen In The Arrangement Of
Flushing**



DESIGN CONCEPT

-Because All The Residential Designs Of The Area Have Gables In Their Structural Materials We Tried To Use The Sensation Of The Gables Partitions In The Facade As A Great Concept For One Of The First Building On The area`s Major Design Aptitude

-As You Can See In The Photo, The Slope Of The Windows Represents This Concept



MATERIALS

**-Flushing Have Rail Capability
And Residents Can Move Them**



DESIGN CONCEPT

- In between the entrance flushing which used the same pattern as the terrace that complimented the Chitgar Forest Park skyline, we made use of lights, plants, and windows between the flushing and also we made a filtered space for parking and pedestrian entrances flushing



MATERIALS

Materials Used in the Building:

1. Brick

2. Conceret Panel

3. Glass

4. Flushing

