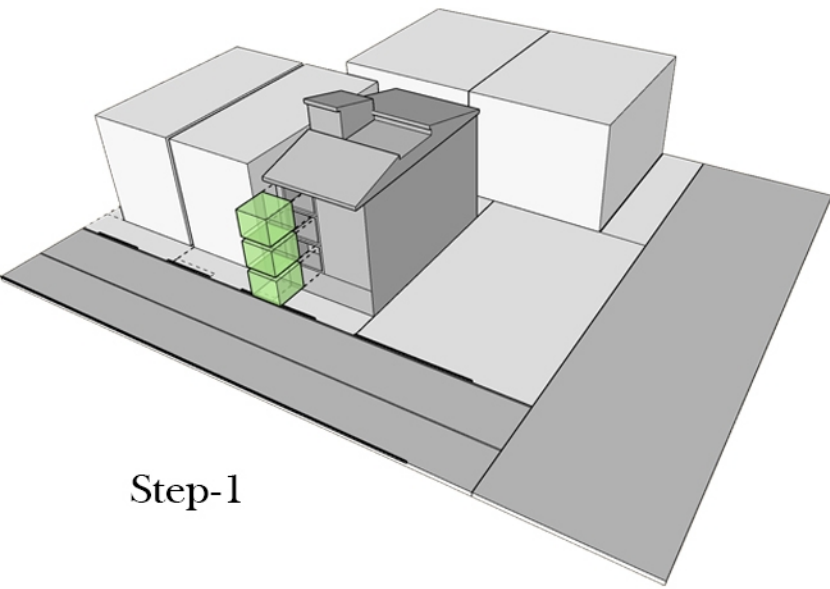
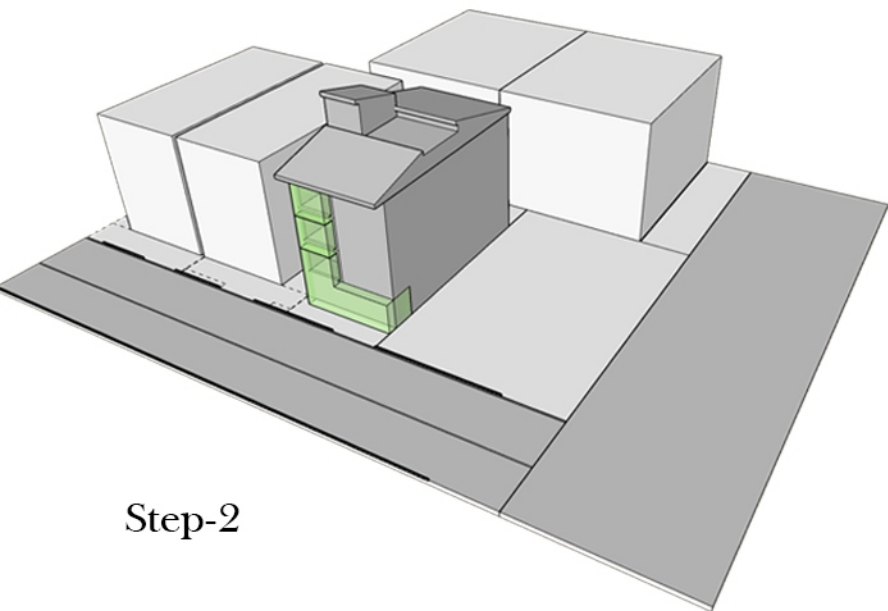


روند طراحی نمای شمالی پروژه مسکونی کوهک

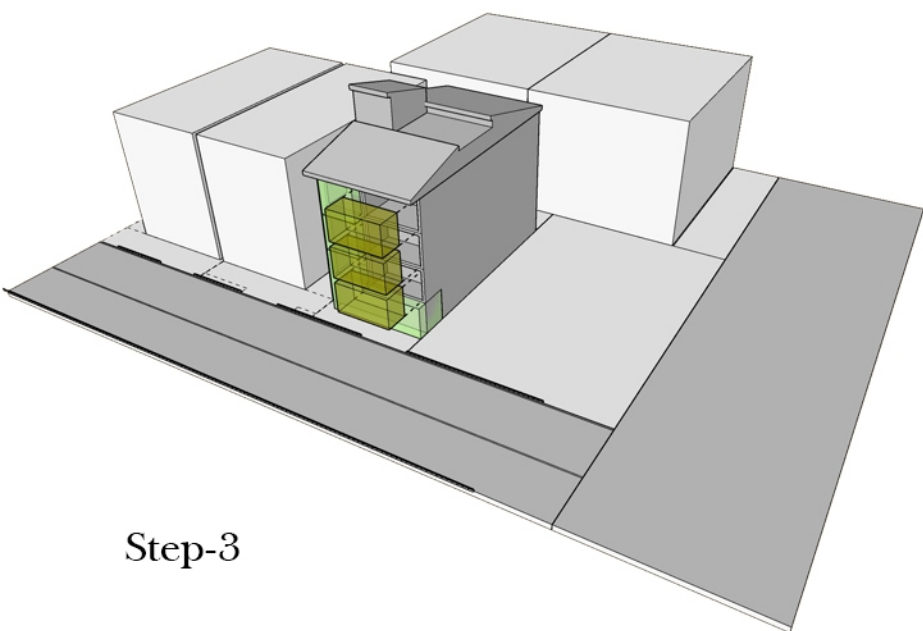




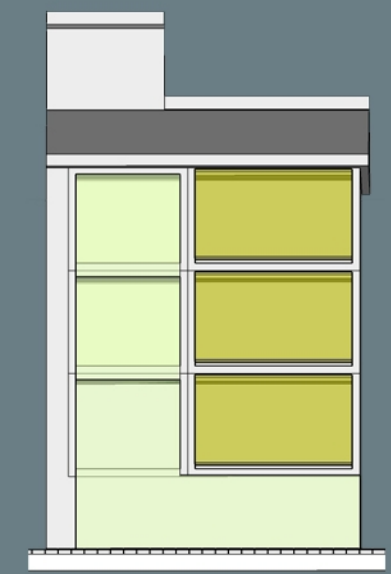
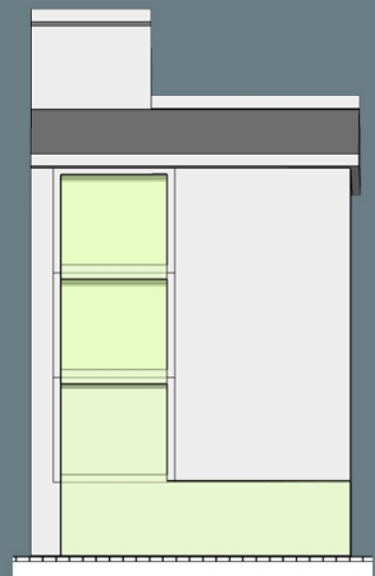
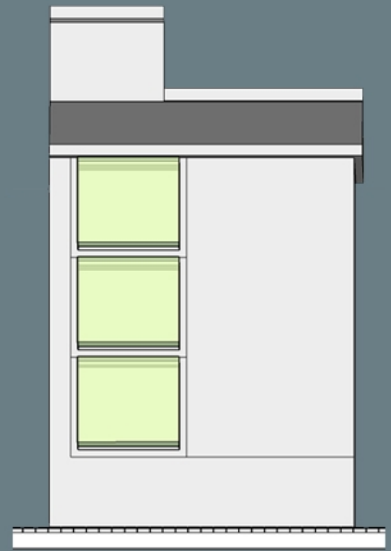
Step-1

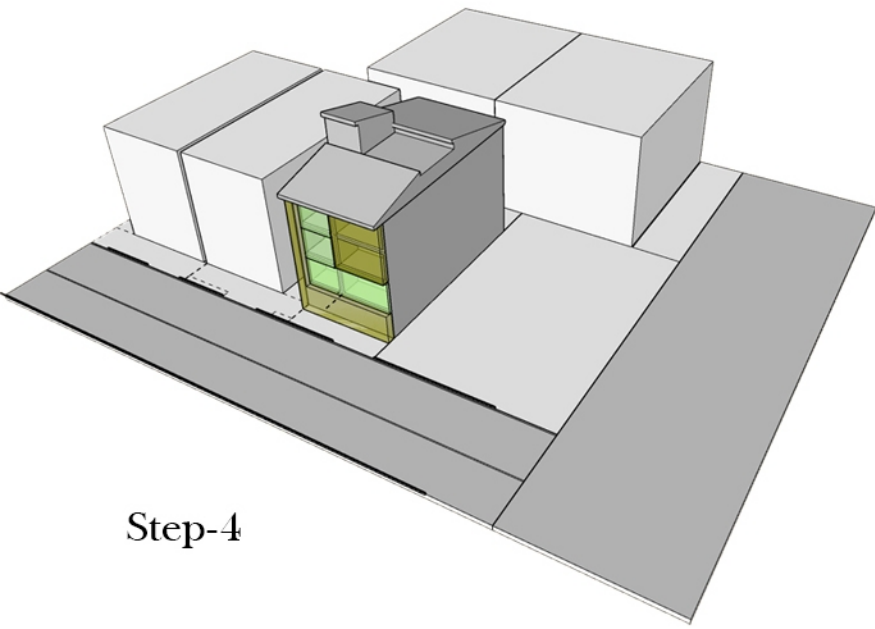


Step-2

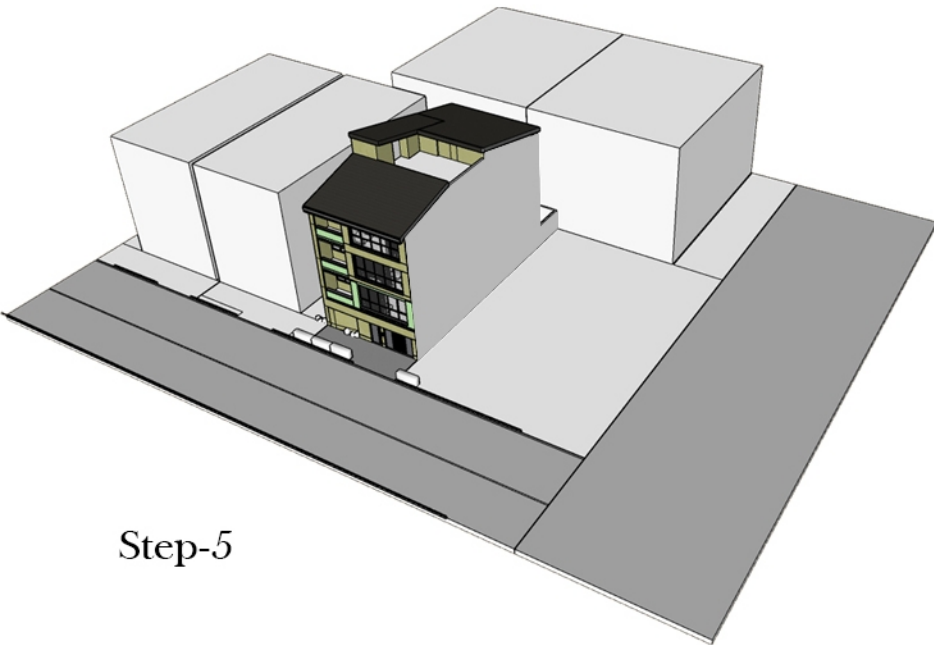


Step-3





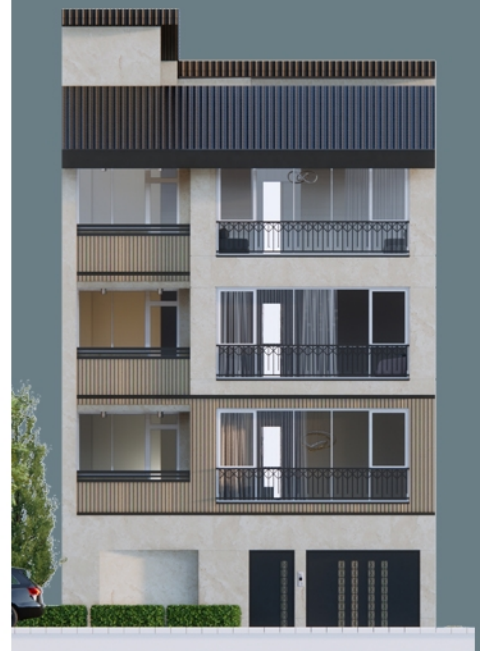
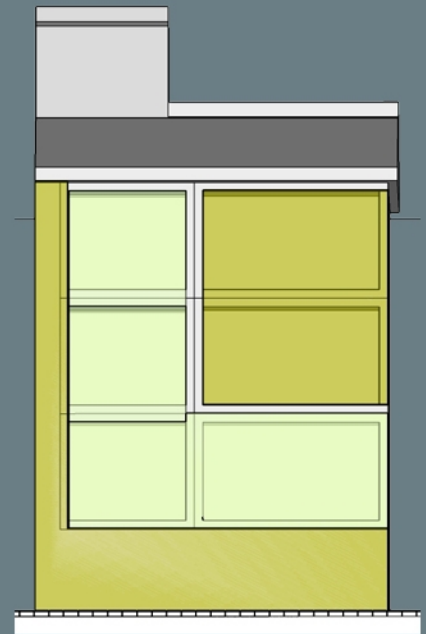
Step-4



Step-5



Step-6





North Design Facade



North Design Facade

North Elevation

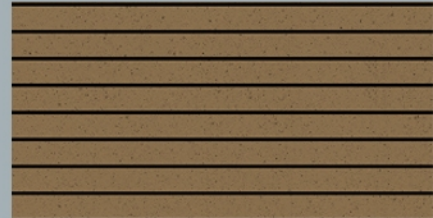




سنگ تراورتن ممتاز عباس آباد



نرده از جنس فلز



آجر نسوز نماچین
کد : S12

ابعاد : ۳۱*۷ سانتیمتر