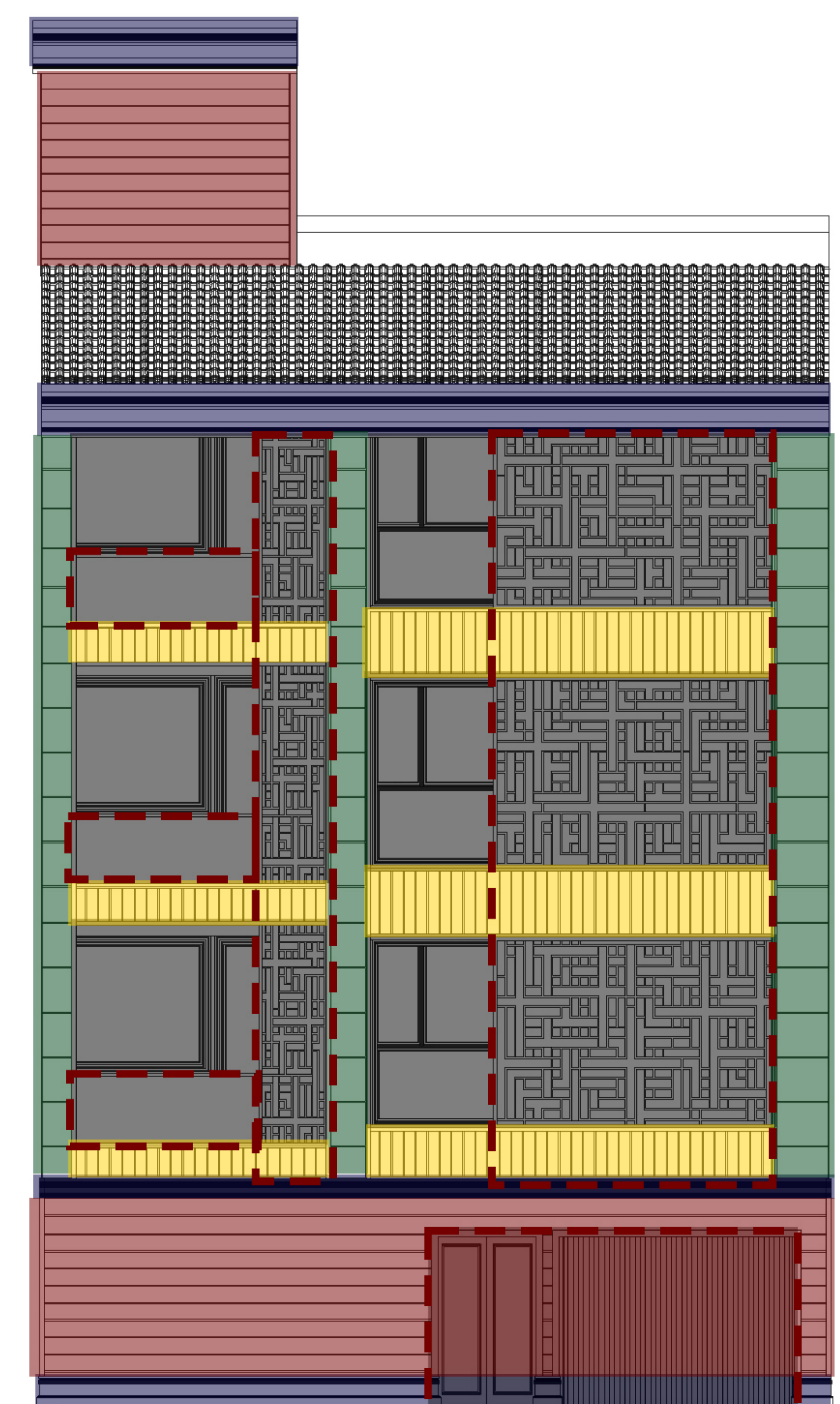
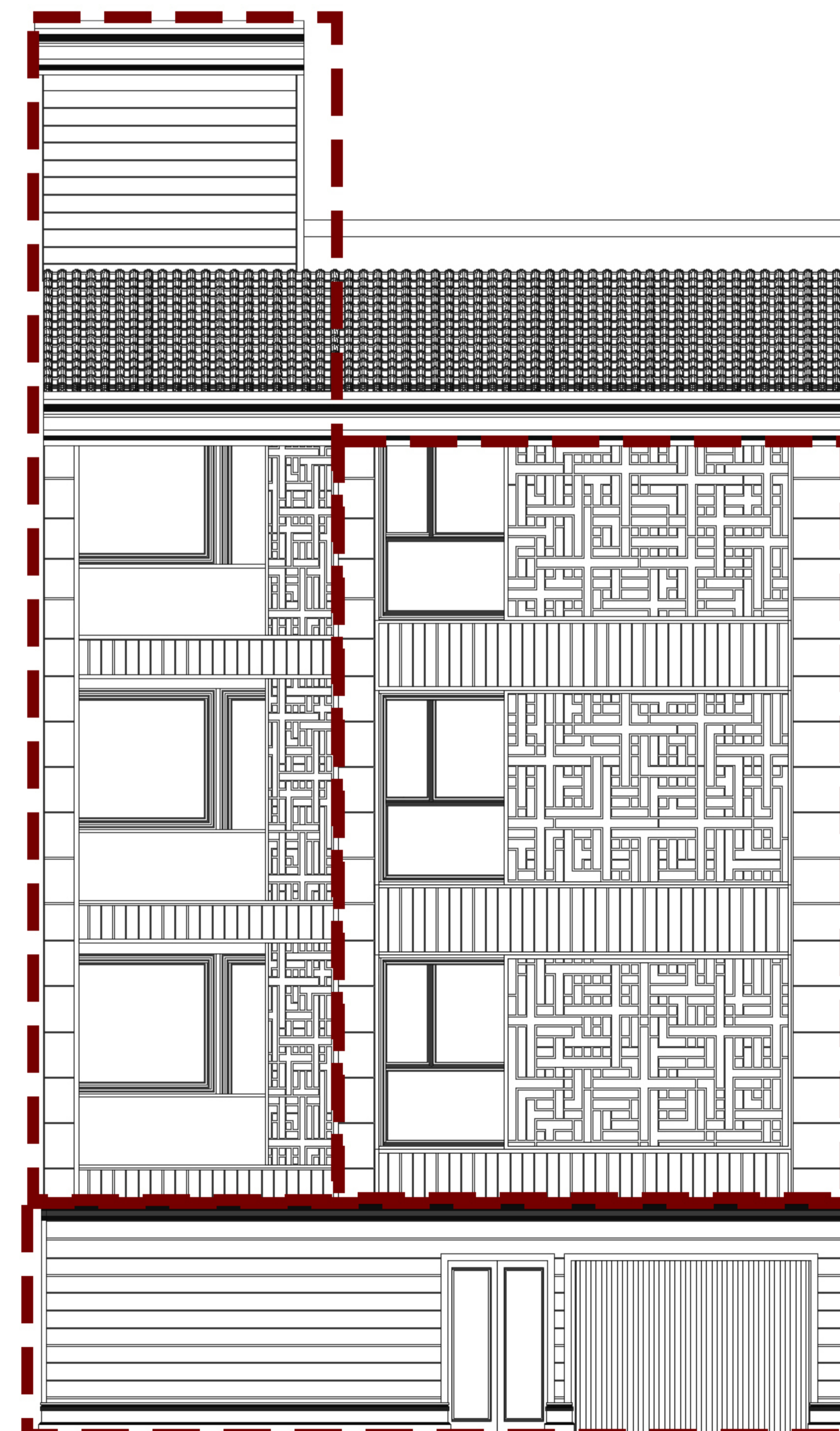
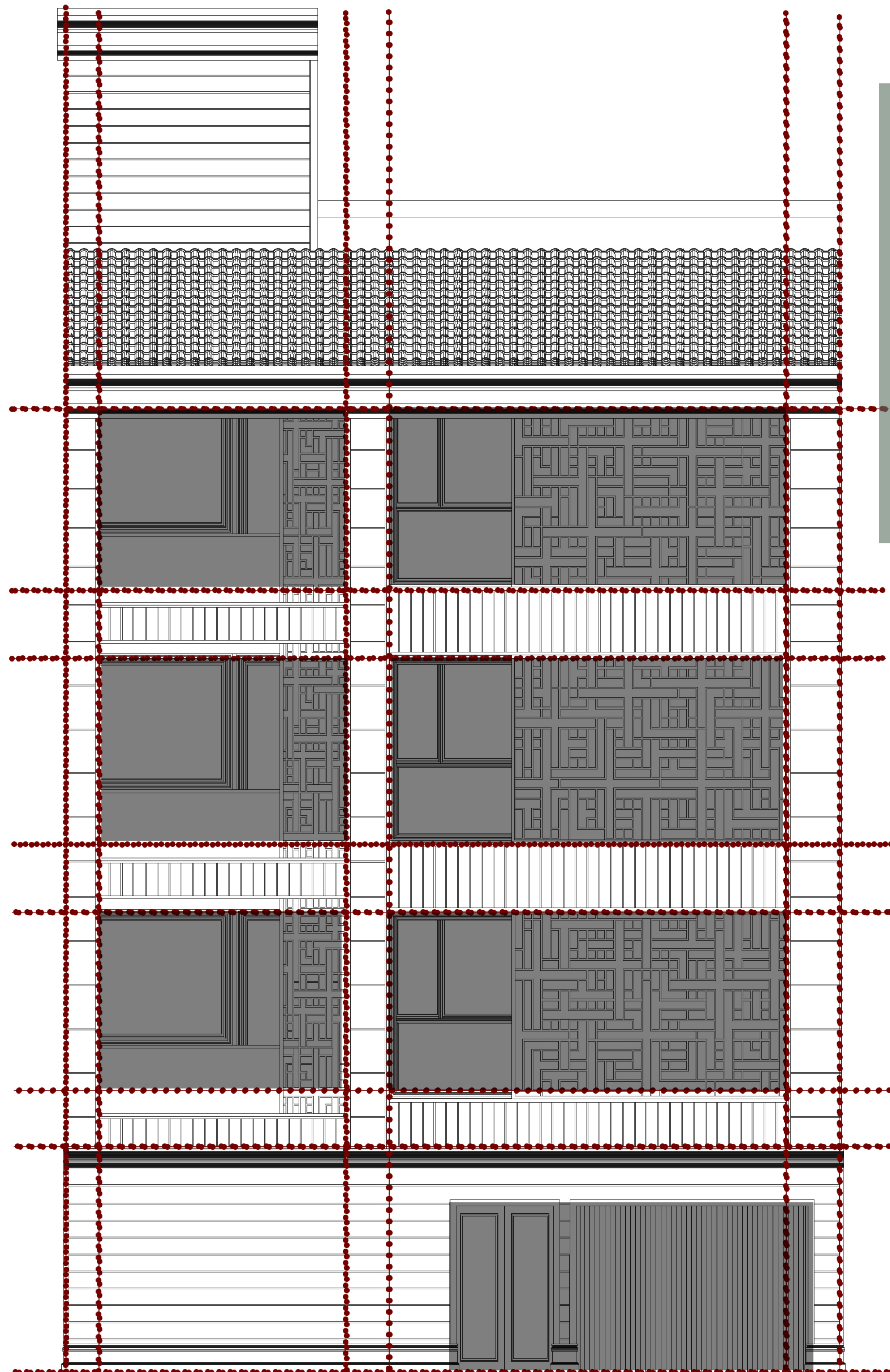
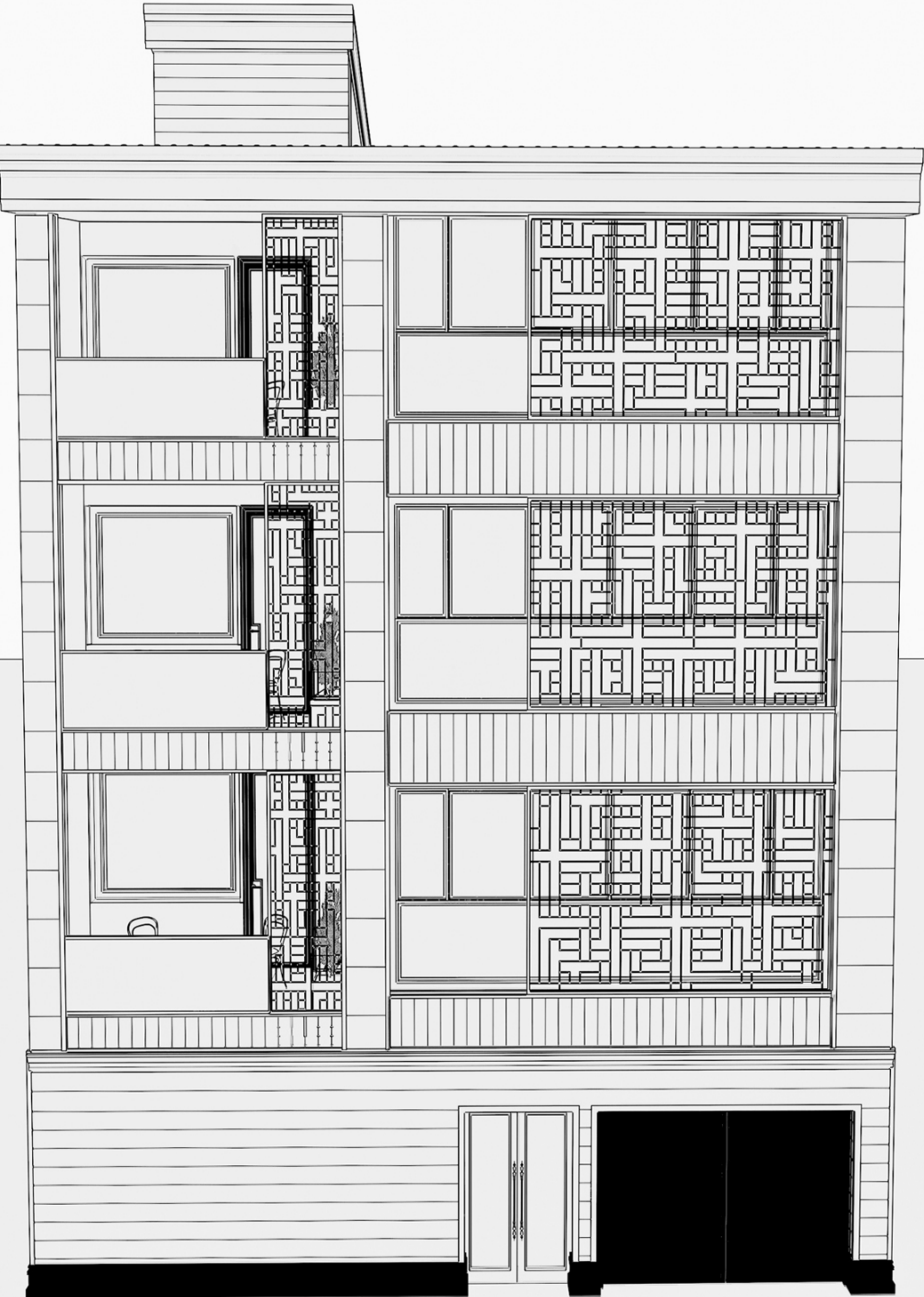


# Geometric division of the facade of the building according to the openings

According to the area of the openings, the geometric combination of vertical and horizontal lines is used to organize the facade



# Introduction of facade material

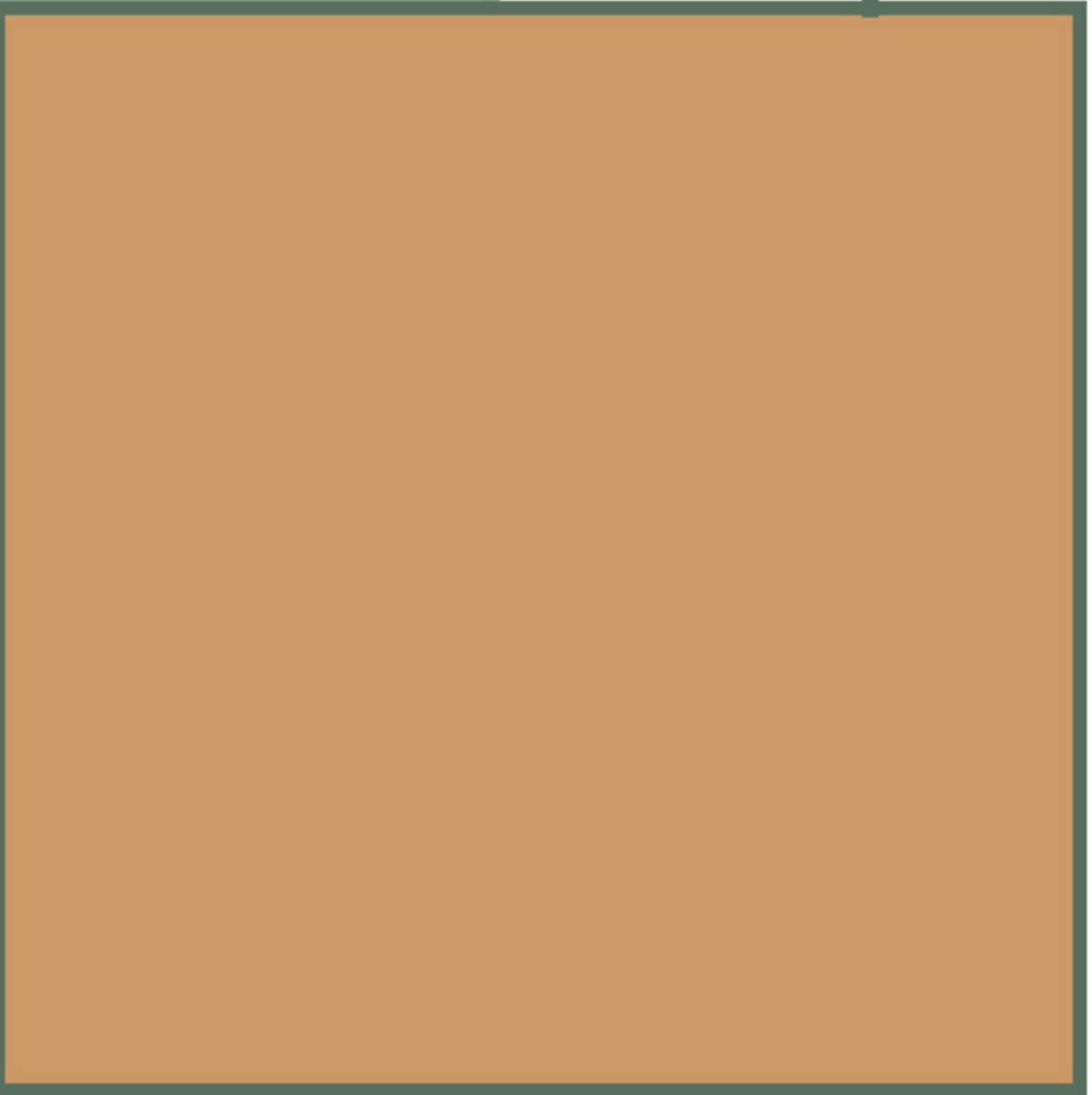
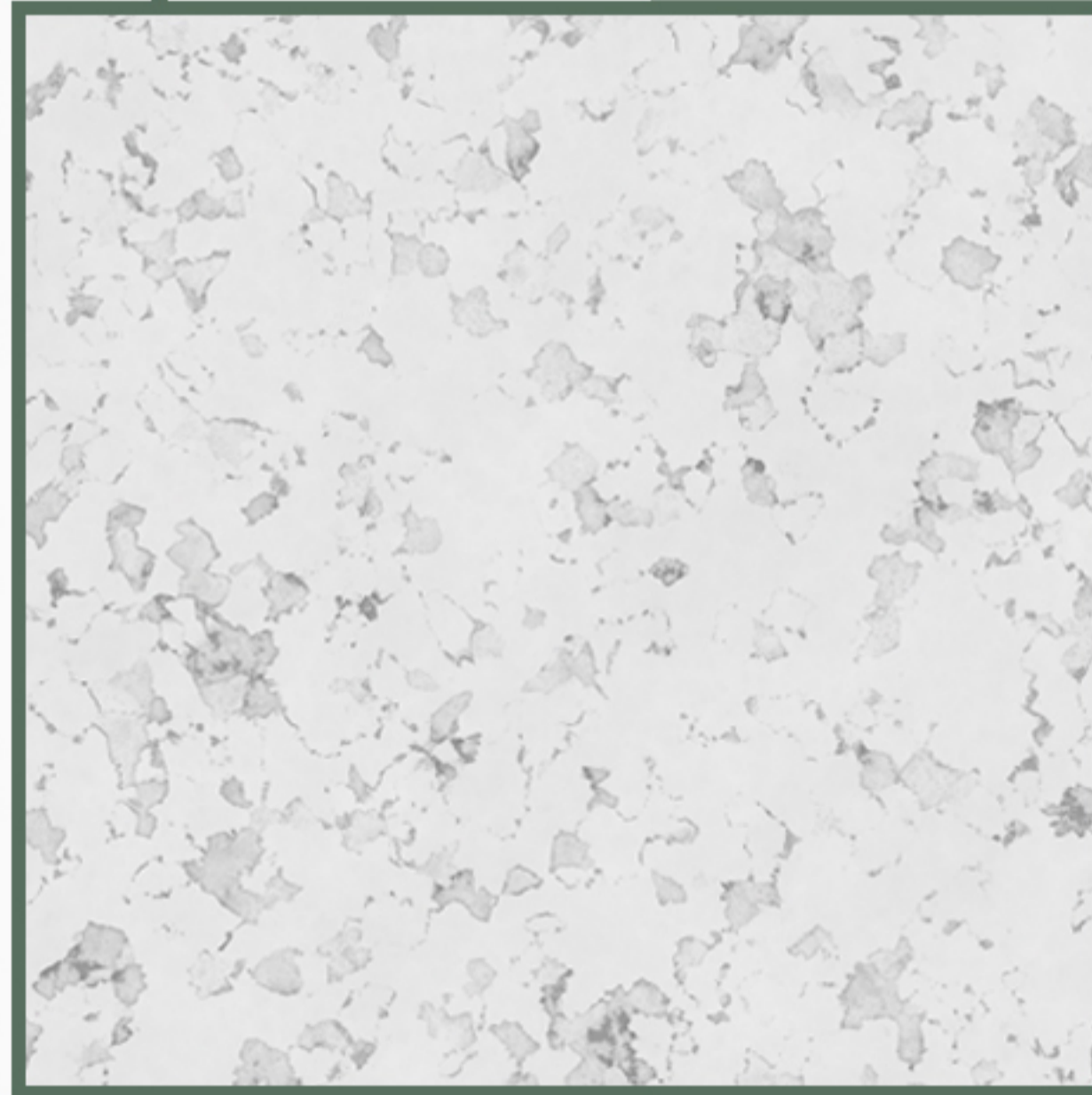


Matte dark blue frames to emphasize the framing and confirm the lines of stone facade and stretch metal and parapet

Matt white cement facade with 25 cm high tiles to emphasize the entrance



Stretch metal in golden color with geometric patterns to reduce the opening level and create visual privacy



Cream-colored reflective stone tiles with a width of 15 cm to cover structural



Matte stone tiles in light cream color to cover, balance the facade graphics and create vertical lines

