



1st FLOOR PLAN

Sc : 1/100



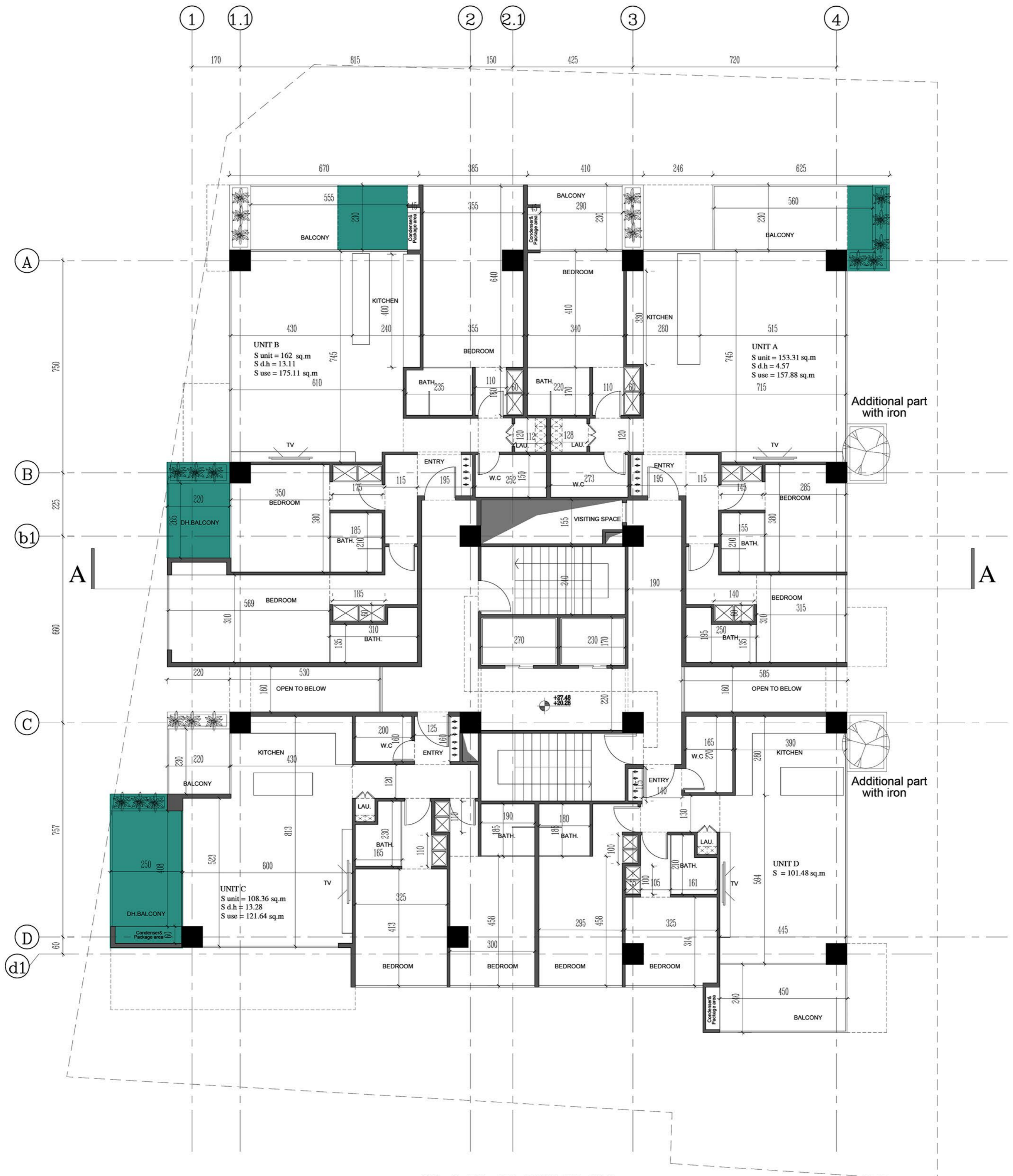
2nd & 4th FLOOR PLAN

Sc : 1/100



3rd FLOOR PLAN

Sc : 1/100



5th & 7th FLOOR PLAN

Sc : 1/100

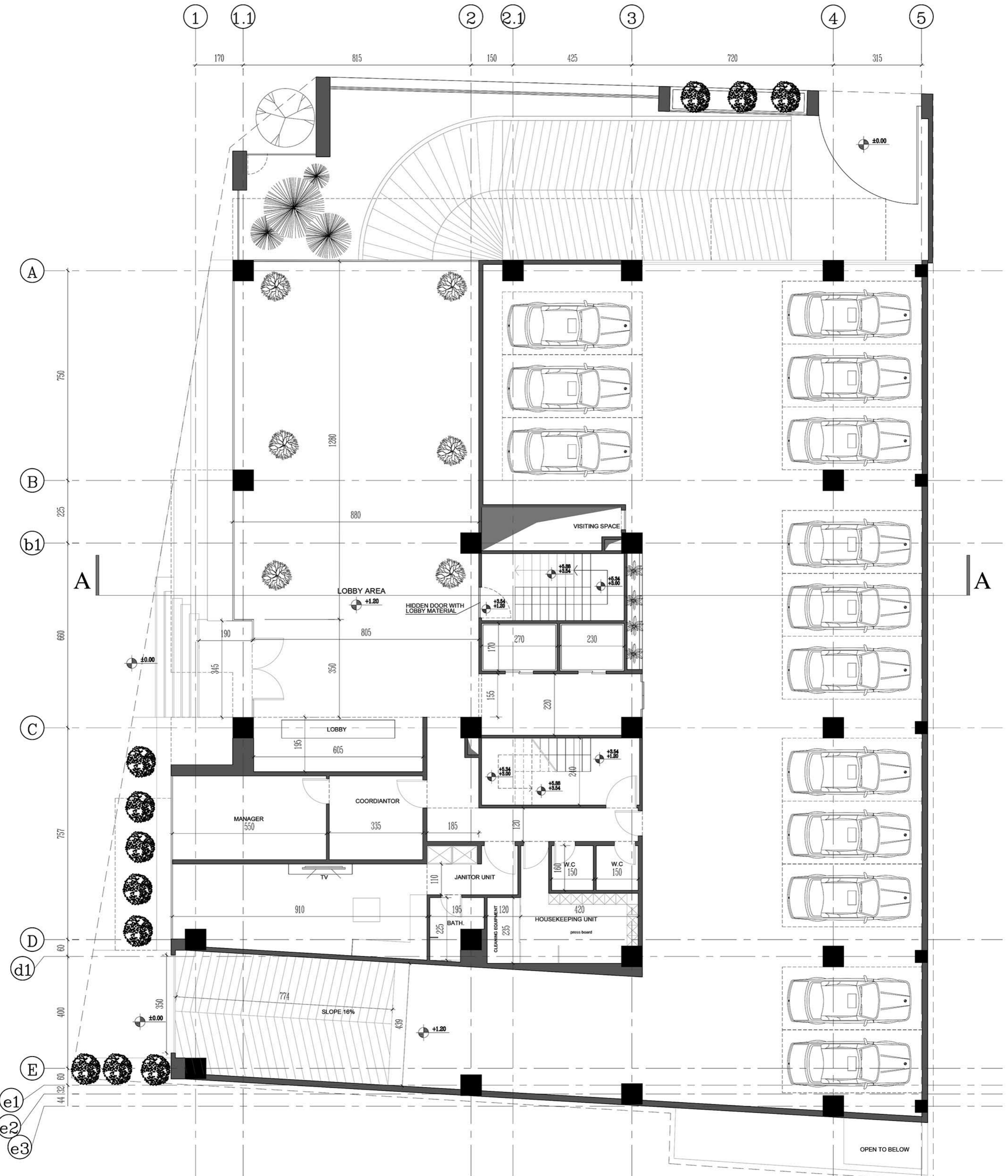


6th FLOOR PLAN

Sc : 1/100

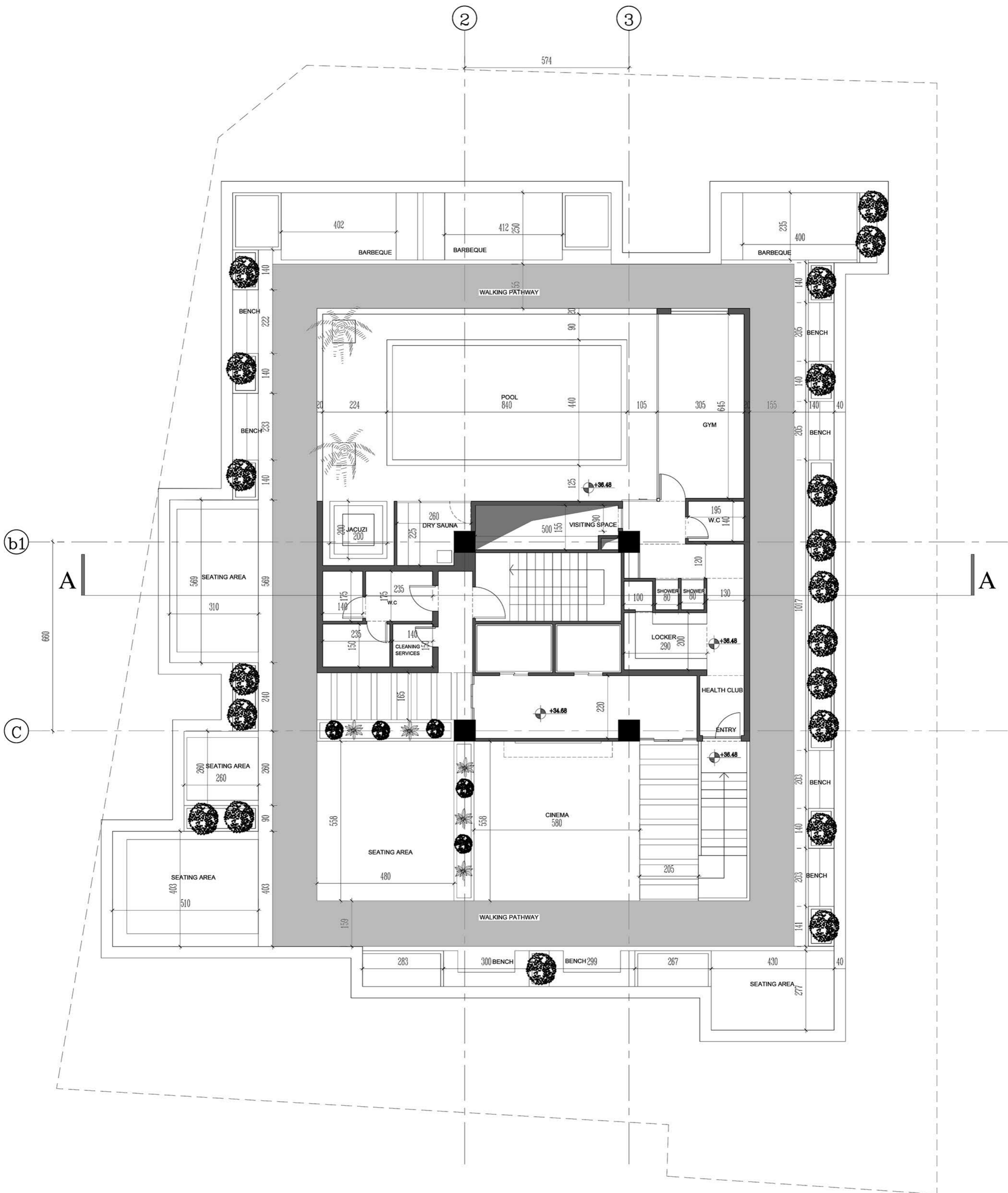


8th FLOOR PLAN



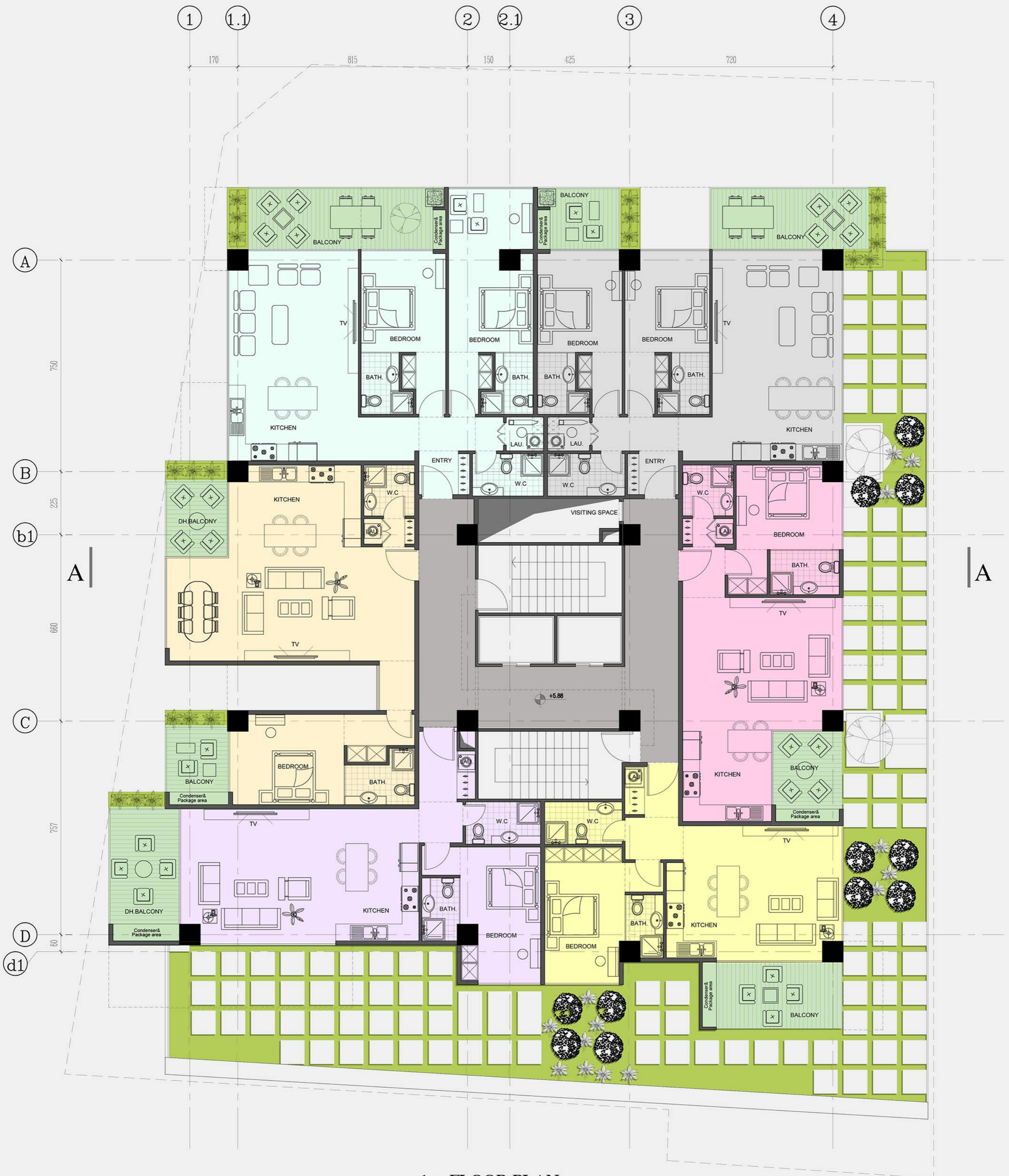
GROUND FLOOR PLAN

Sc : 1/100



ROOF PLAN

Sc : 1/100



1st FLOOR PLAN

Sc : 1/100



2nd & 4th FLOOR PLAN

Sc : 1/100



3rd FLOOR PLAN

Sc : 1/100



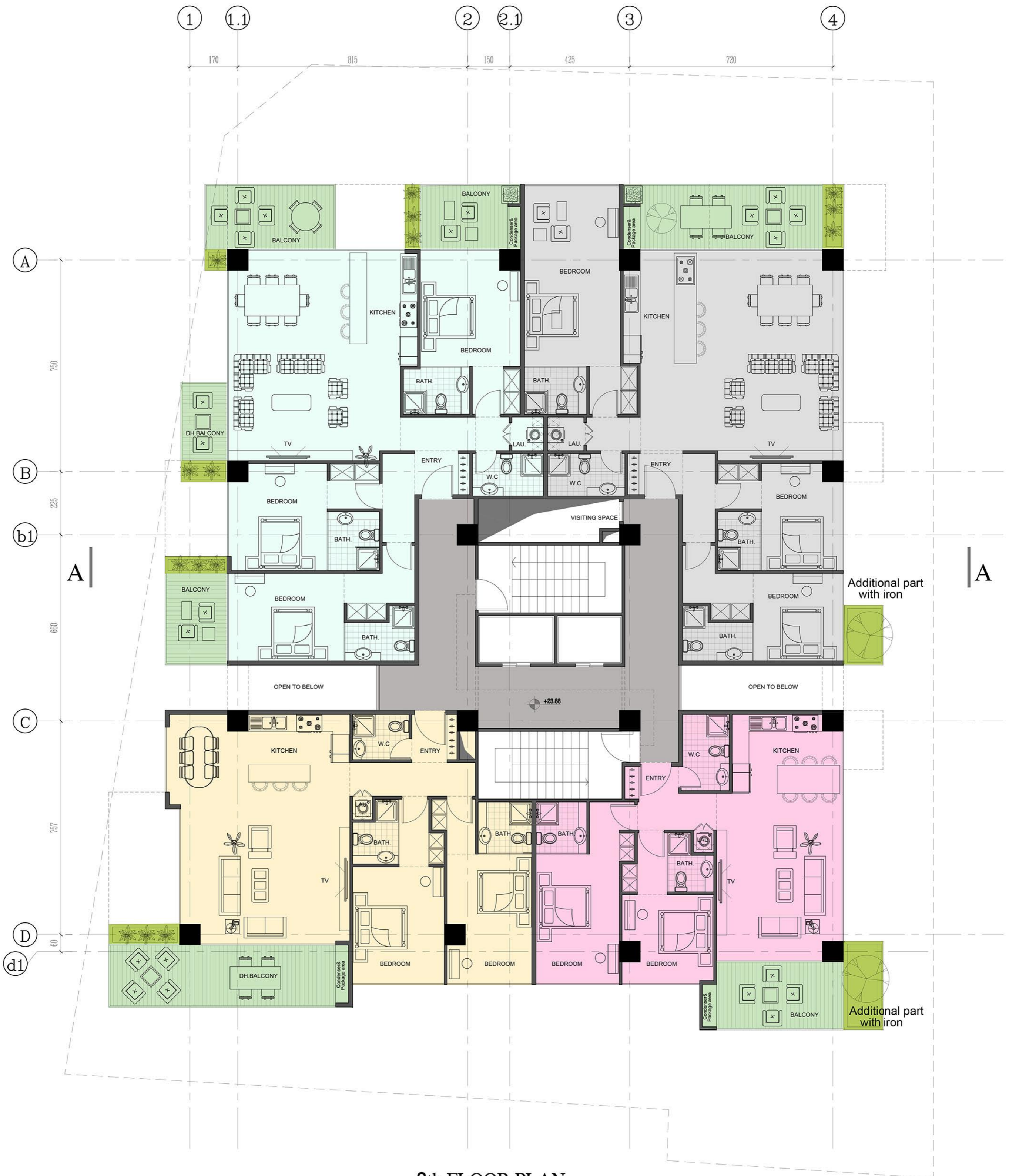
5th & 7th FLOOR PLAN

Sc : 1/100



6th FLOOR PLAN

Sc : 1/100



8th FLOOR PLAN

Sc : 1/100



BASEMENT PLAN

Sc: 1/100



GROUND FLOOR PLAN

Sc : 1/100

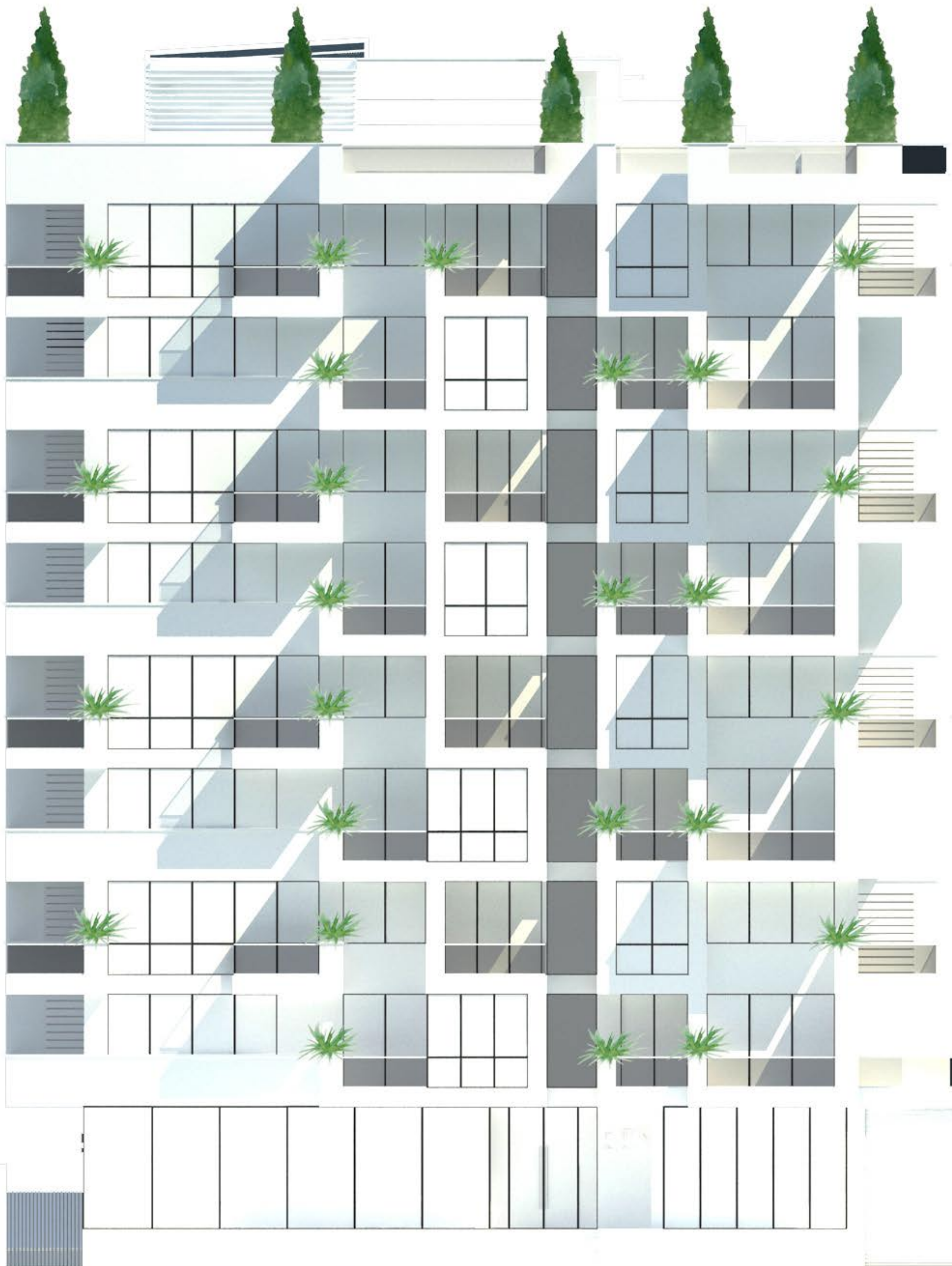


ROOF PLAN

Sc : 1/100



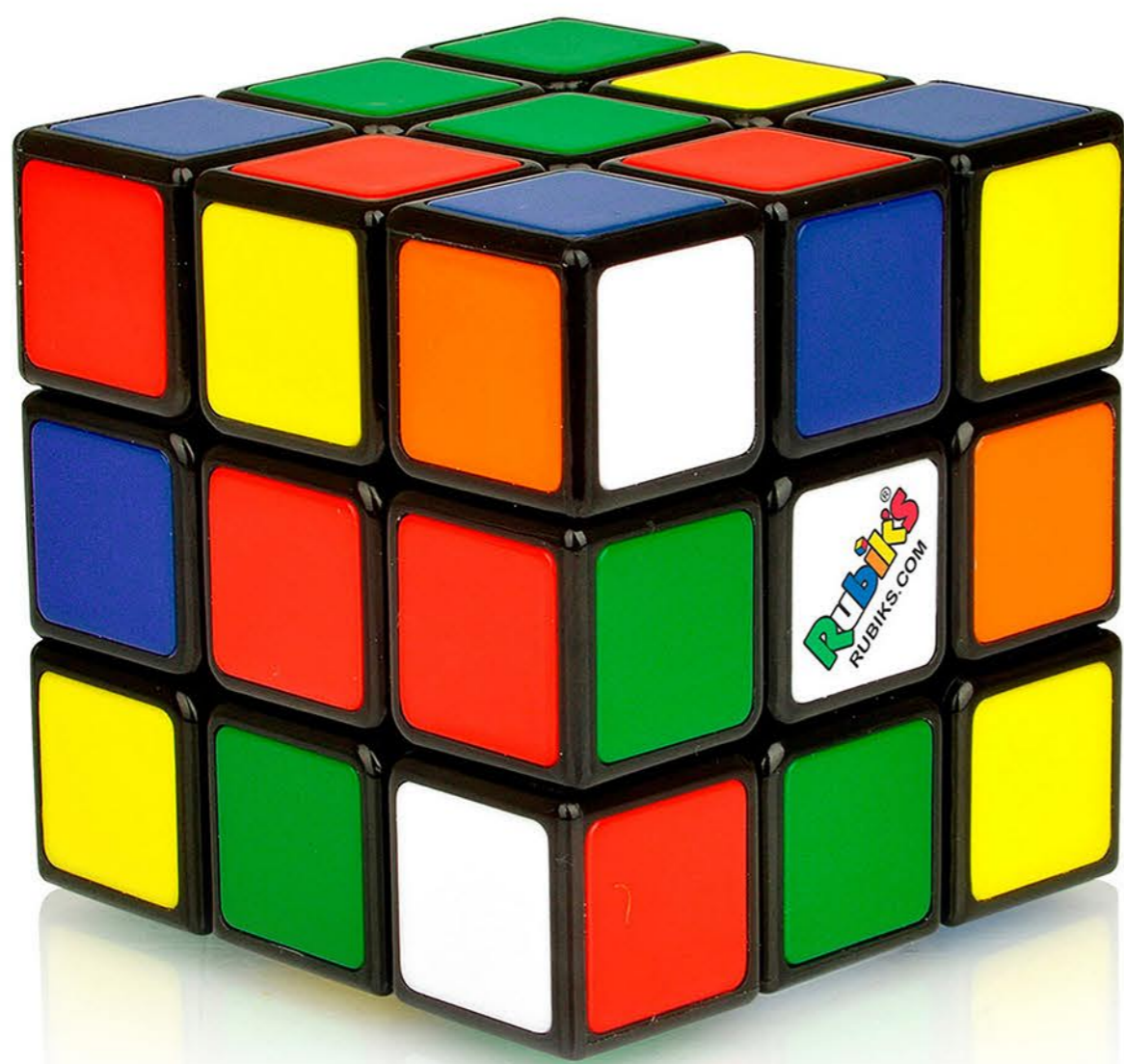
EAST FACADE





SOUTH FACADE

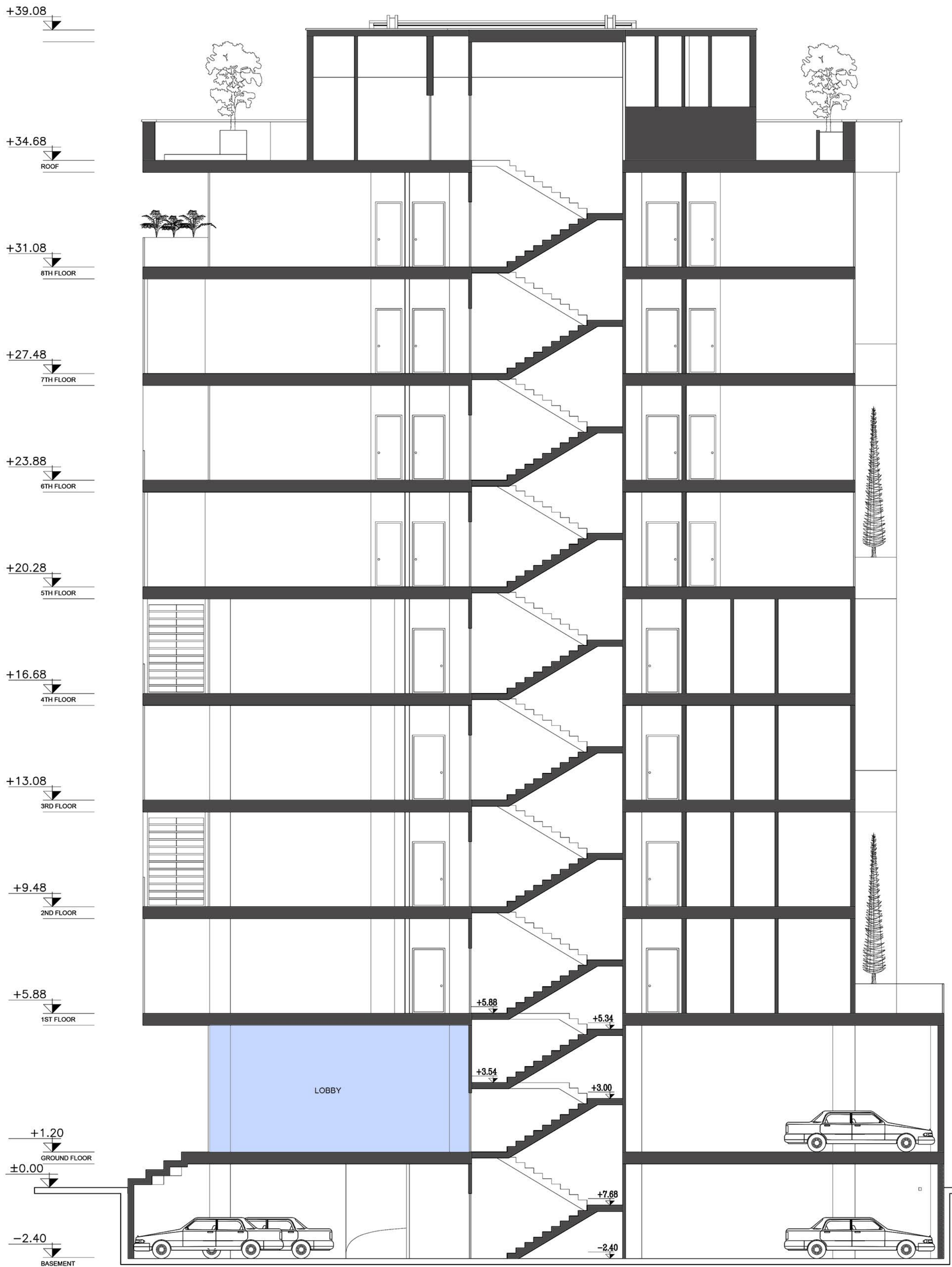
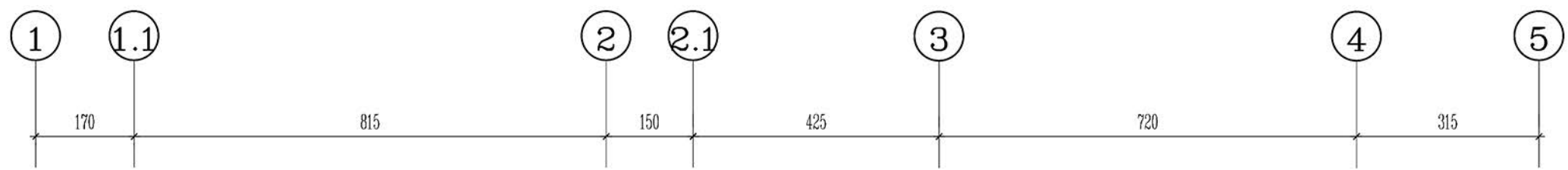




RUBIK RESIDENCE



تعداد پارکینگ	مساحت راهرو-راه پله آسانسور و داکت	مساحت قابل استفاده	مساحت تراس دبل هایت	مساحت فضای مسقف	تعداد واحد	طبقات
28		827.65 sq.m				زیرزمین
14		773.13 sq.m				همکف
	90 sq.m	648.14 sq.m	30.77 sq.m	617.37 sq.m	6	طبقه اول
	90 sq.m	651.84 sq.m	34.47 sq.m	617.37 sq.m	6	طبقه دوم
	90 sq.m	648.14 sq.m	30.77 sq.m	617.37 sq.m	6	طبقه سوم
	90 sq.m	651.84 sq.m	34.47 sq.m	617.37 sq.m	6	طبقه چهارم
	92 sq.m	648.56 sq.m	30.96 sq.m	617.60 sq.m	4	طبقه پنجم
	92 sq.m	652.20 sq.m	34.60 sq.m	617.60 sq.m	4	طبقه ششم
	92 sq.m	648.56 sq.m	30.96 sq.m	617.60 sq.m	4	طبقه هفتم
	92 sq.m	652.20 sq.m	34.60 sq.m	617.60 sq.m	4	طبقه هشتم
42	728 sq.m	5201.48 sq.m	261.60 sq.m	4939.88 sq.m	40	مجموع
	6802.26 sq.m					مجموع متراژ ساخت



SECTION - A

Sc : 1/100