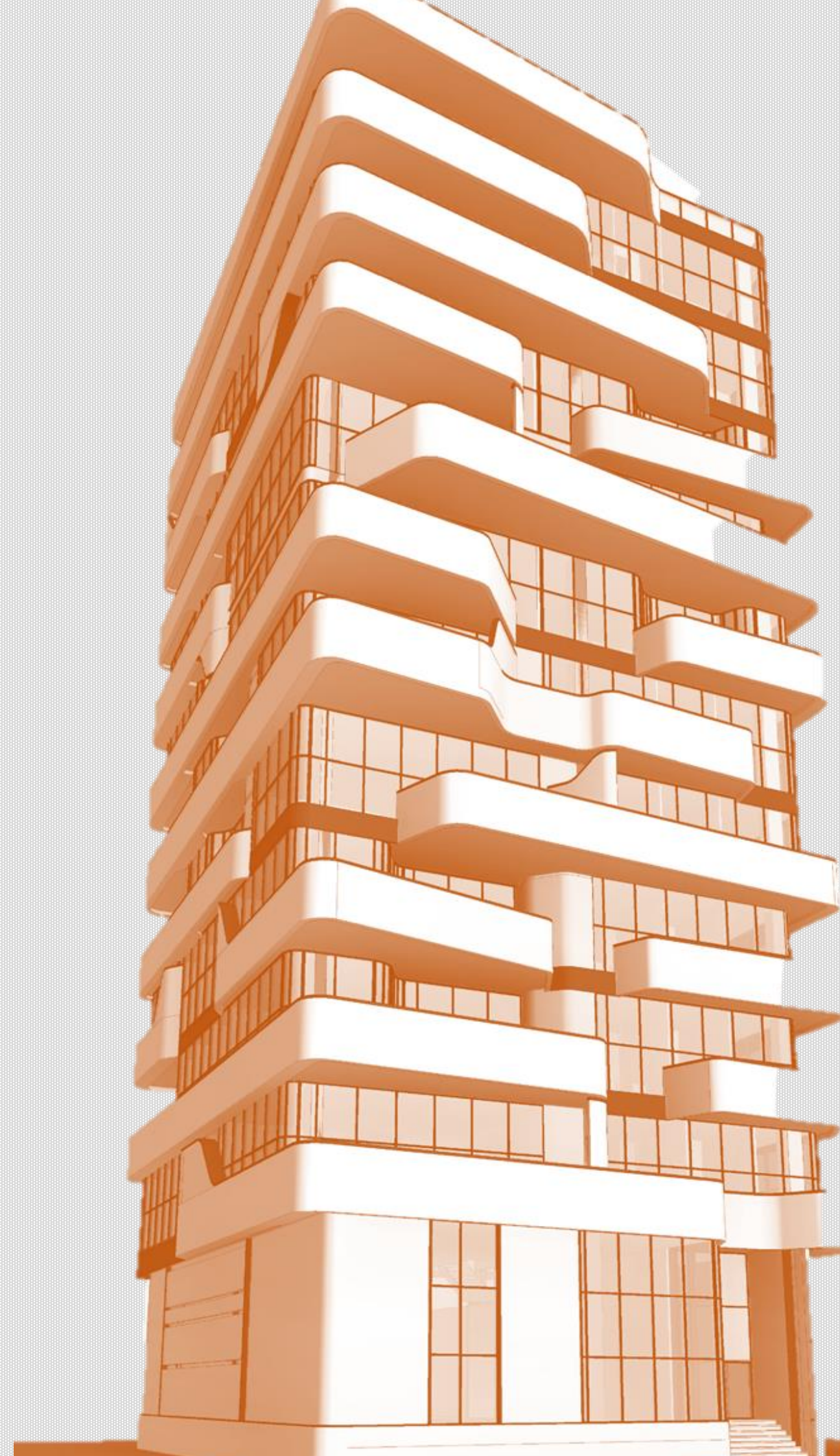


HIM ROYAN

RESIDENTIAL

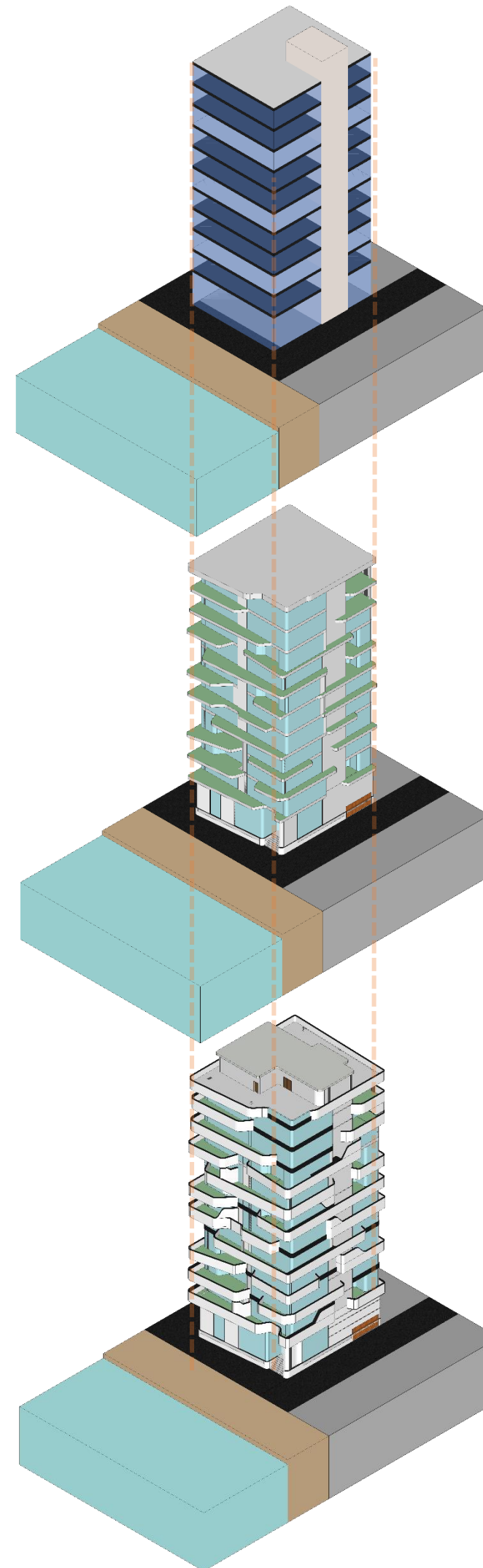


***TECHNICAL
REPORTS***



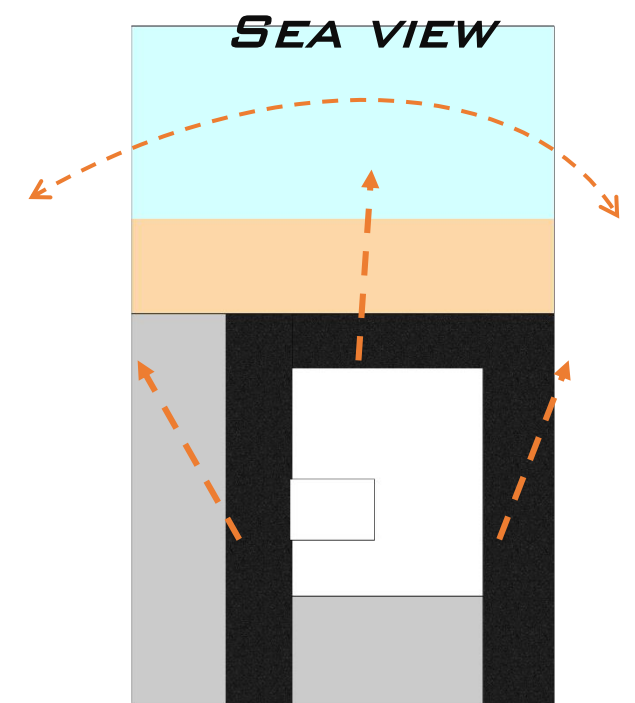
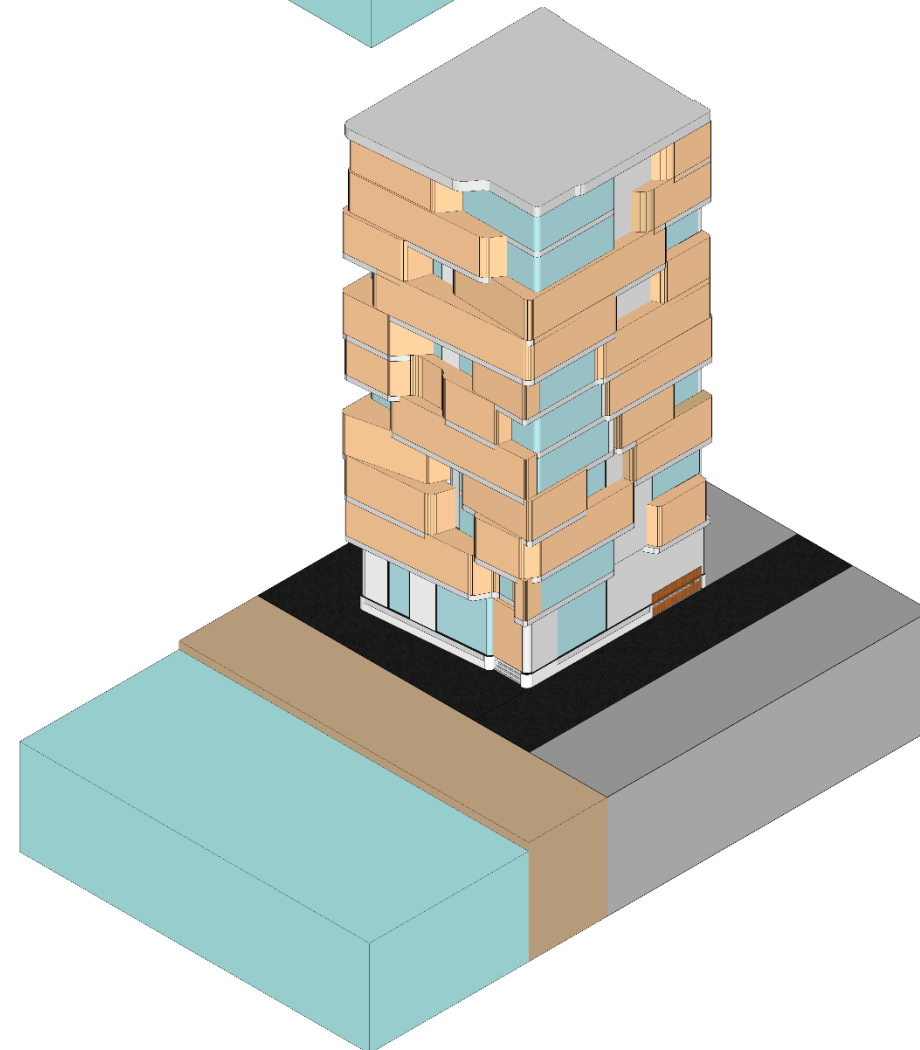
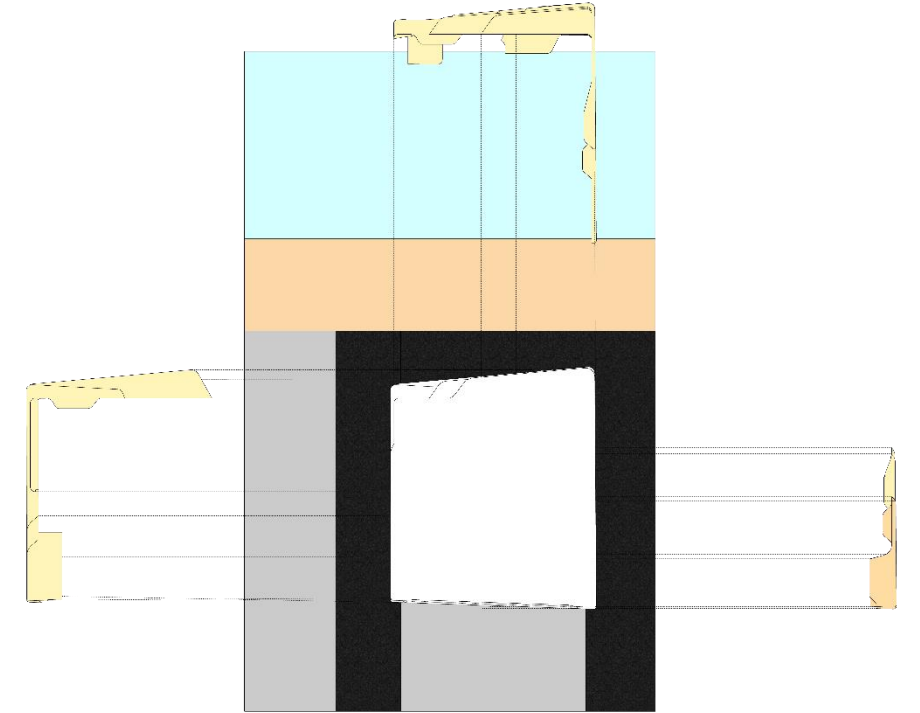
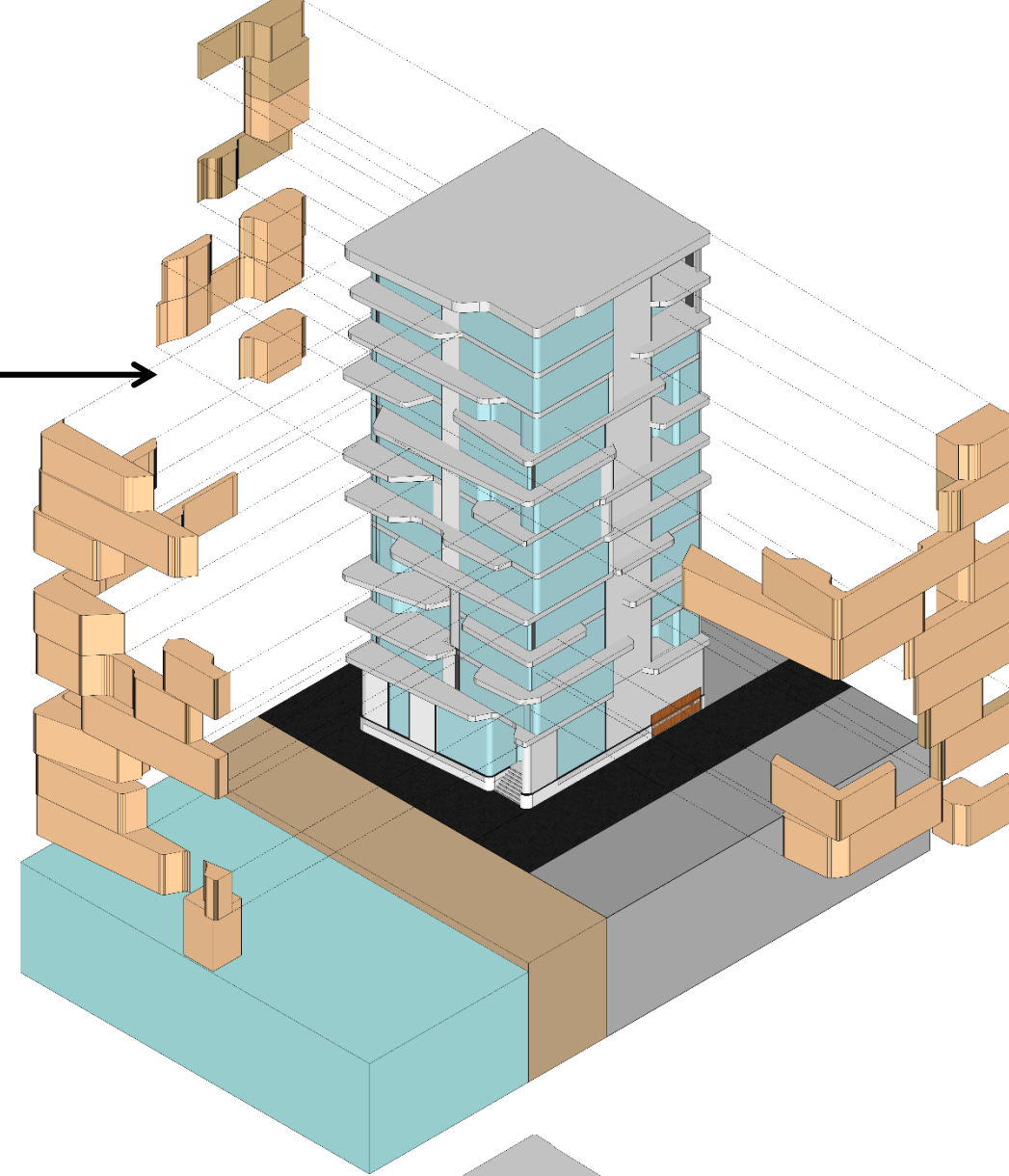
**ARCHITECTURAL
DIAGRAM**

- STAIRCASE
PLACEMENT ON THE
WEST SIDE TO
MITIGATE
UNDESIRABLE LIGHT
- SHADING FOR THE
WINDOWS
- CREATING
TRANSPARENCY FOR
BETTER LIGHT AND
VIEWS



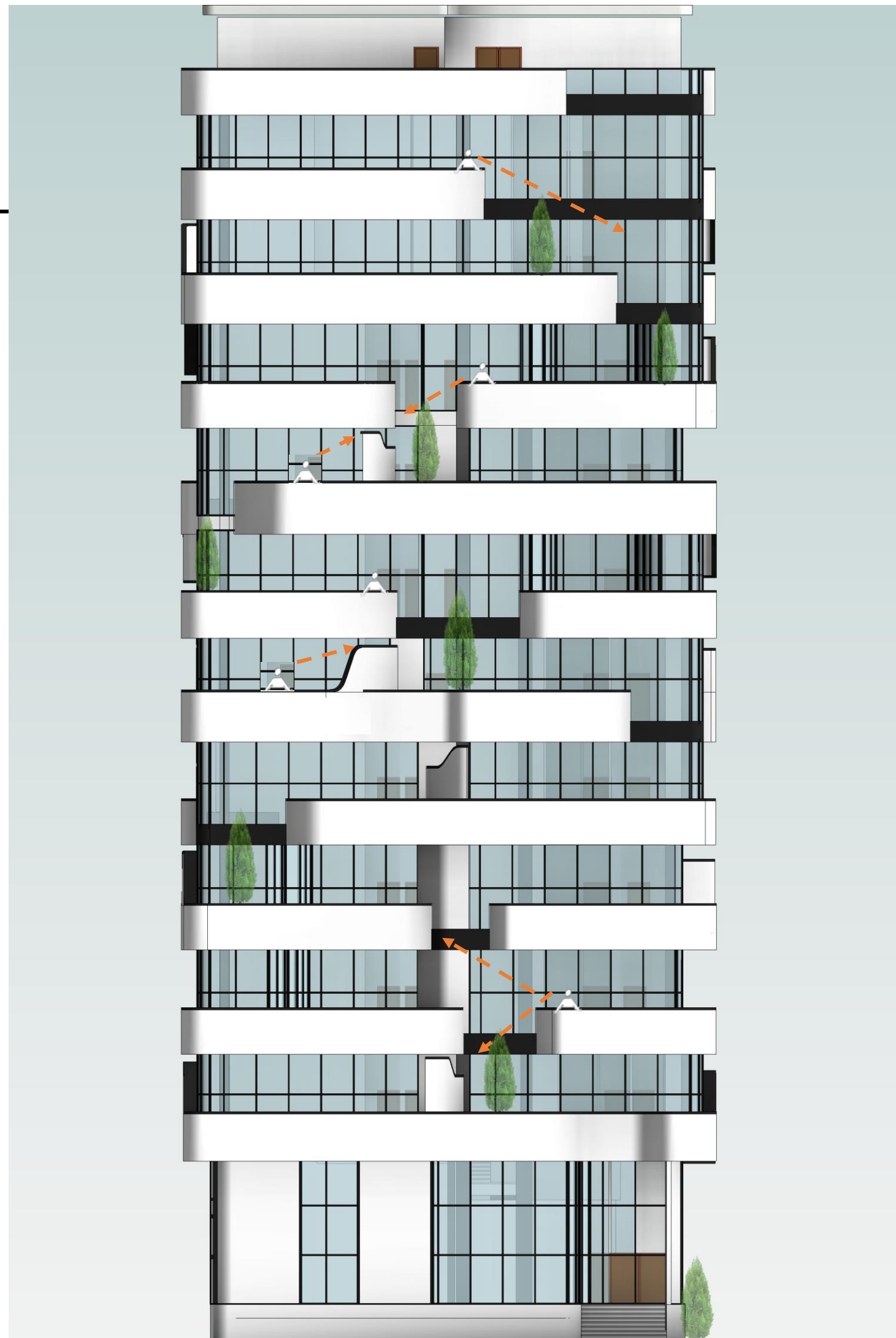
**ARCHITECTURAL
DIAGRAM**

- CREATING A TERRACE FOR A VIEW OF THE SEA
- CREATING A DOUBLE HEIGHT SPACE
- SHADING FOR THE WINDOWS



**ARCHITECTURAL
DIAGRAM**

- BALCONY PRIVACY
FROM EACH OTHER



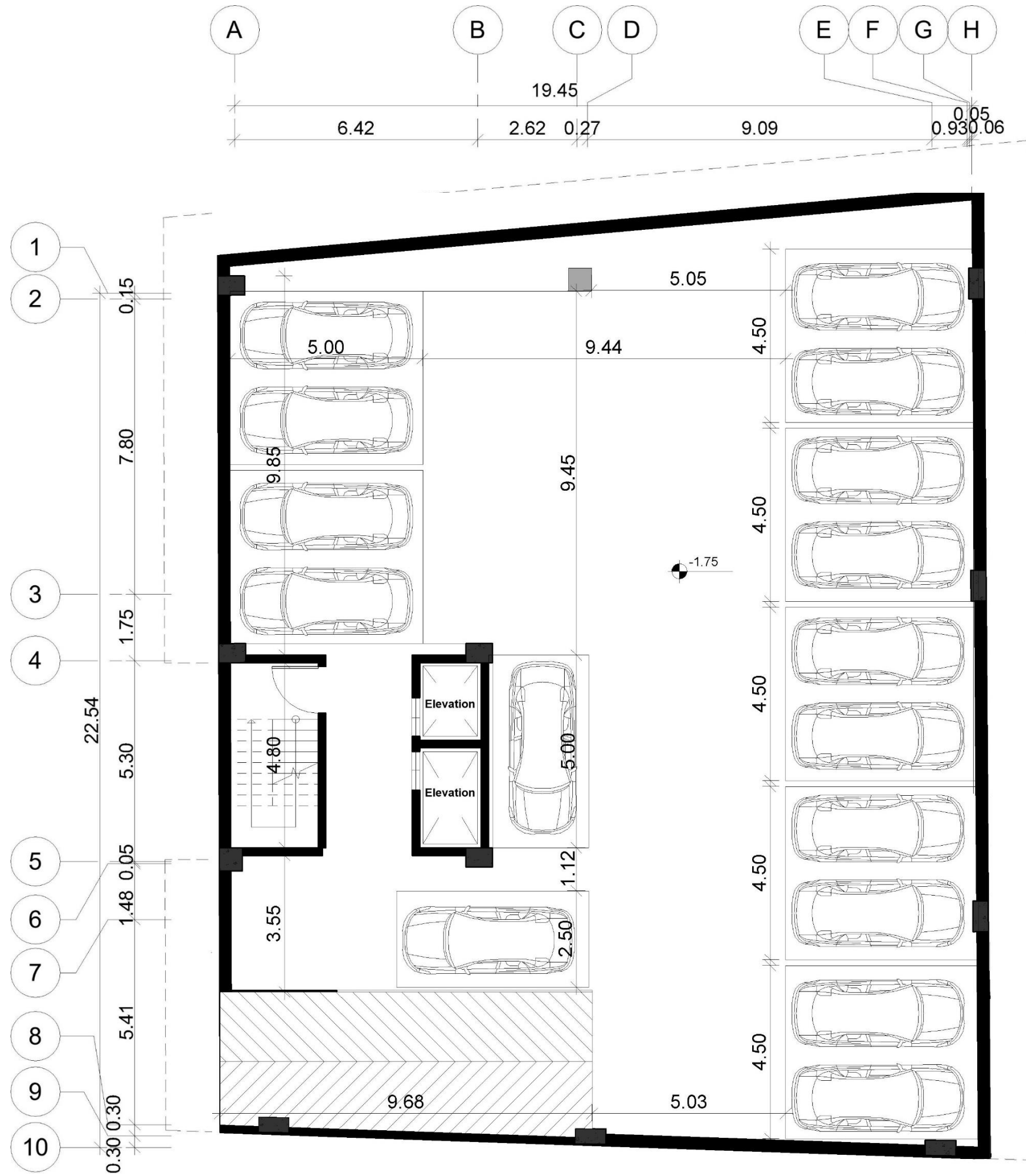
ARCHITECTURAL PLAN



**ARCHITECTURAL
PLAN**

*PARKING LEVEL

PARKING: 16
AREA: 465



ARCHITECTURAL PLAN

*GROUND FLOOR PLAN

AREA
TOTAL AREA: 580

PARKING: 14

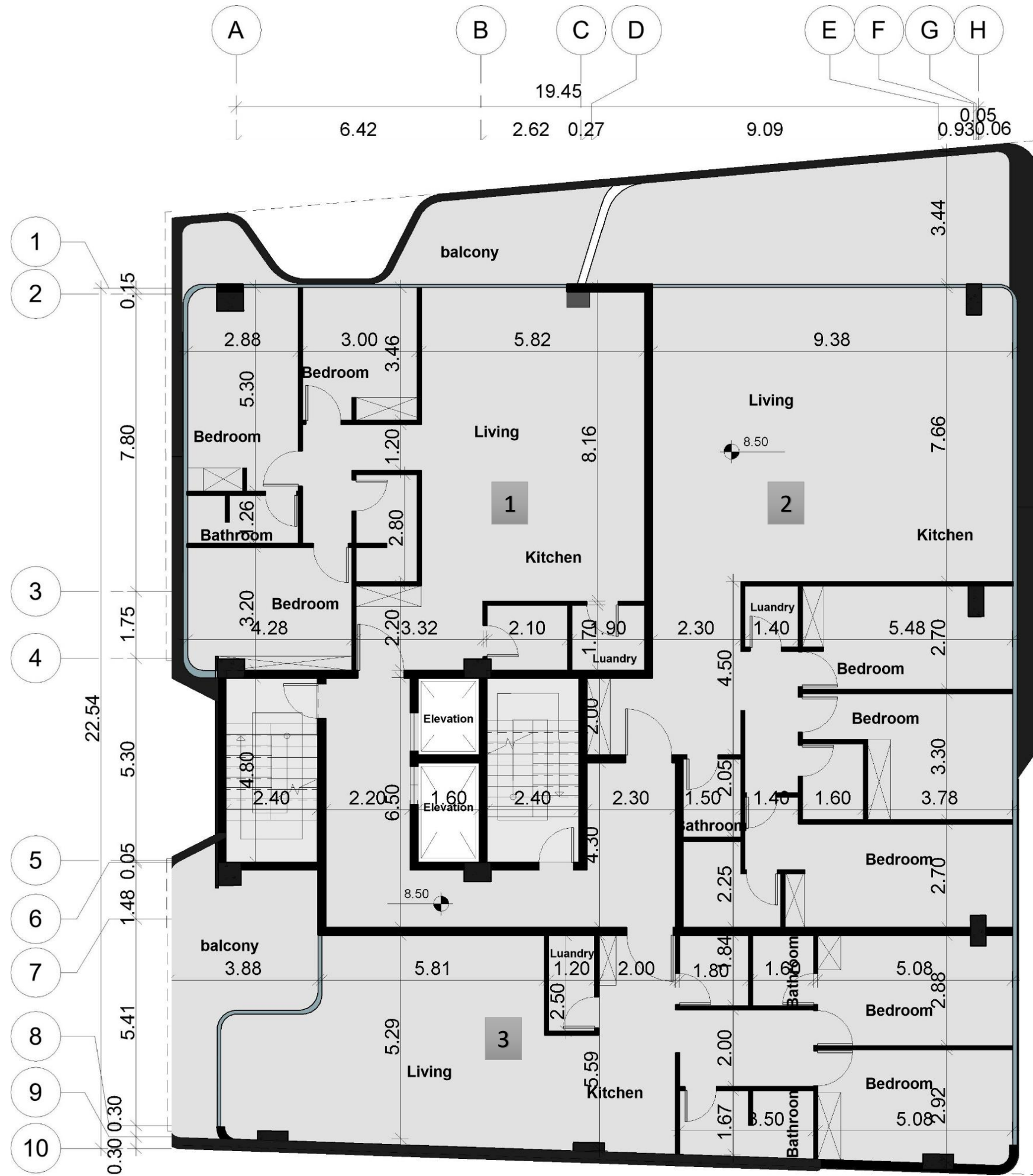


**ARCHITECTURAL
PLAN**

*FIRST FLOOR PLAN

AREA
TOTAL AREA: 580
LOBBY: 26

UNIT 1: 170
UNIT 2: 200
UNIT 3: 135



**ARCHITECTURAL
PLAN**

*FURNITURE PLAN FOR
FIRST FLOOR

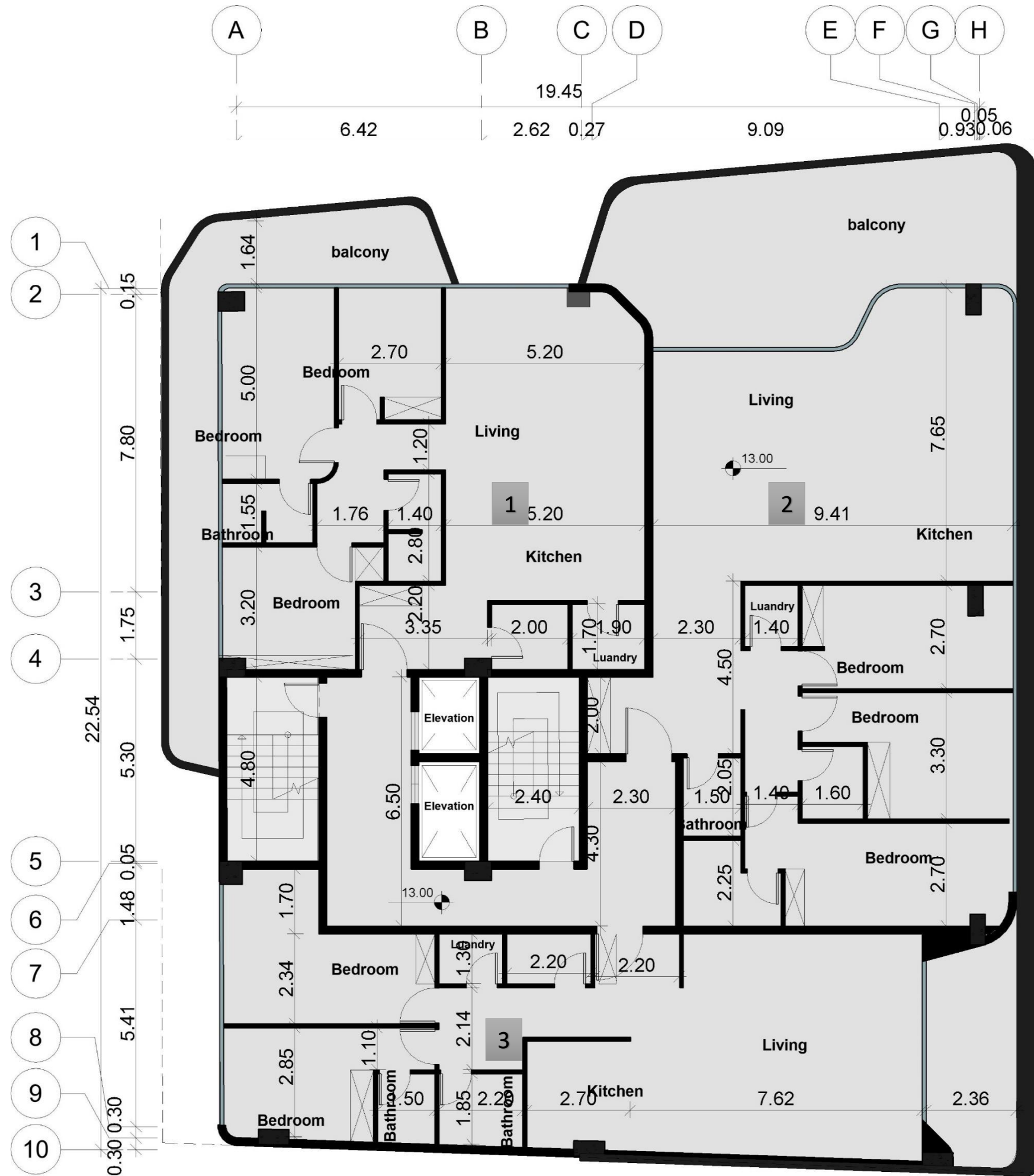


**ARCHITECTURAL
PLAN**

*SECOND FLOOR PLAN

AREA
TOTAL AREA: 580
LOBBY: 26

UNIT 1: 170
UNIT 2: 200
UNIT 3: 135



**ARCHITECTURAL
PLAN**

*FURNITURE PLAN FOR
GROUND SECOND

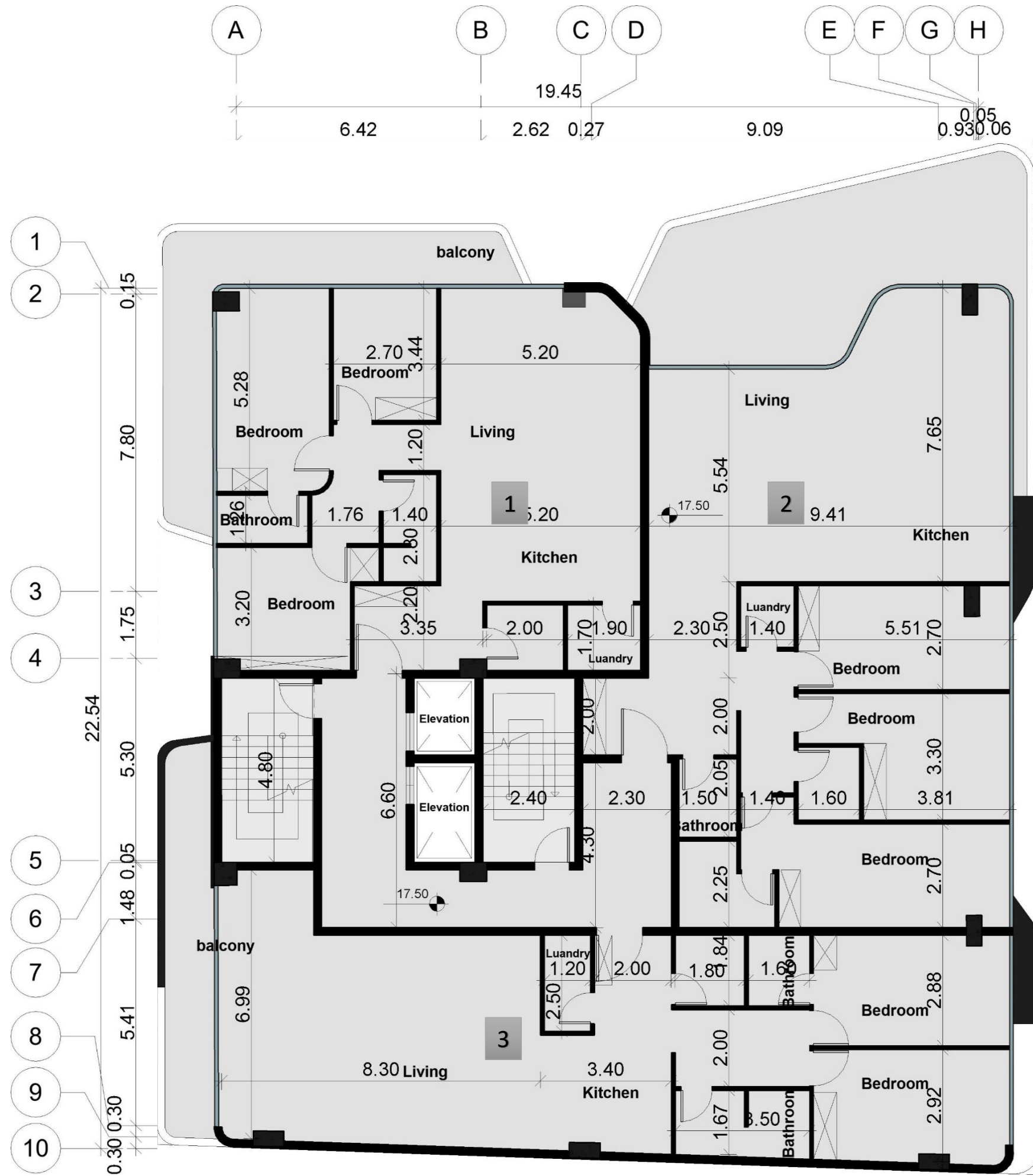


ARCHITECTURAL PLAN

*THIARD FLOOR PLAN

AREA
TOTAL AREA: 580
LOBBY: 26

UNIT 1: 170
UNIT 2: 200
UNIT 3: 135



**ARCHITECTURAL
PLAN**

*FURNITURE PLAN FOR
GROUND THIRD

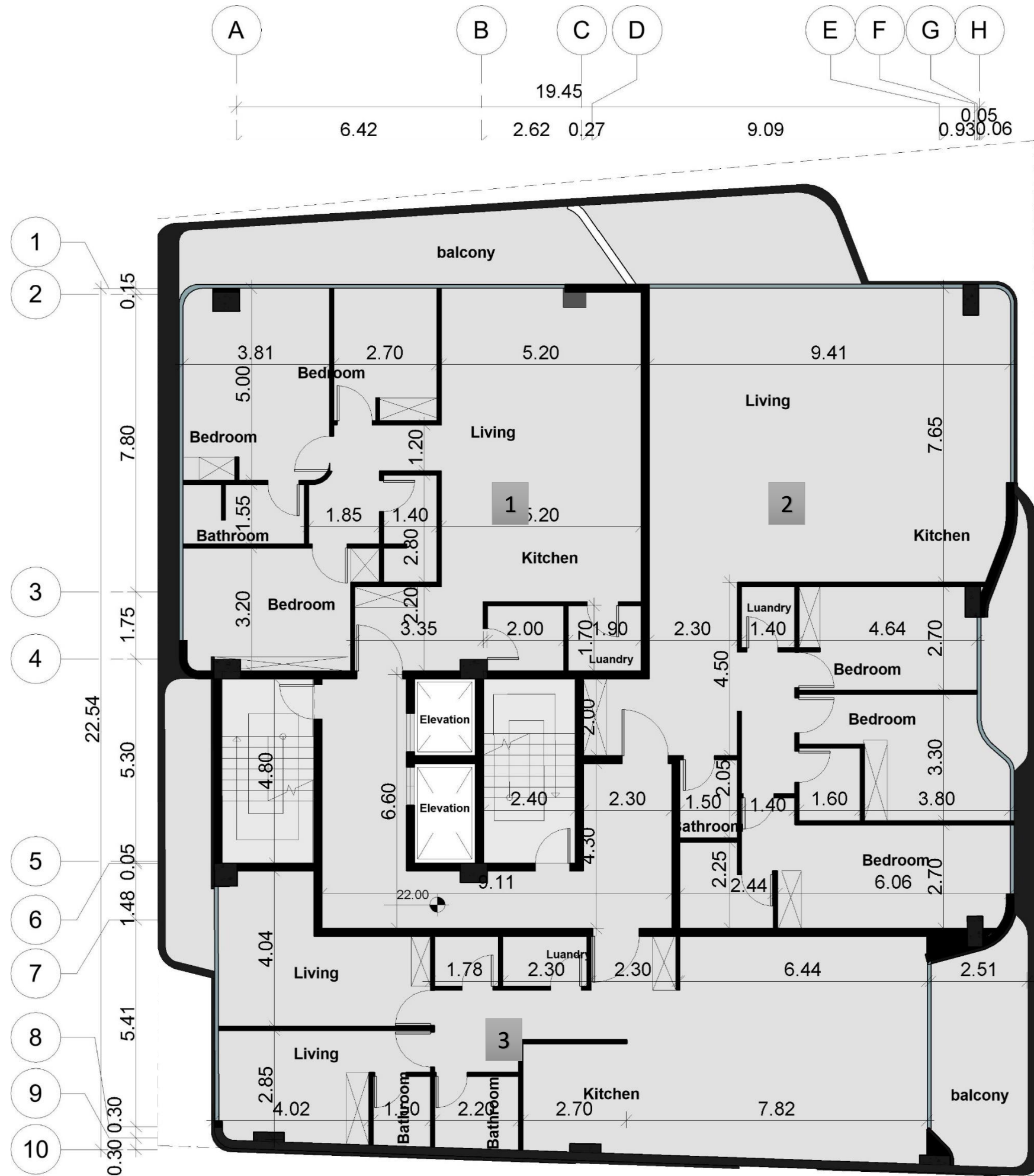


ARCHITECTURAL PLAN

*FOURTH FLOOR PLAN
*FURNITURE PLAN FOR GROUND FOURTH

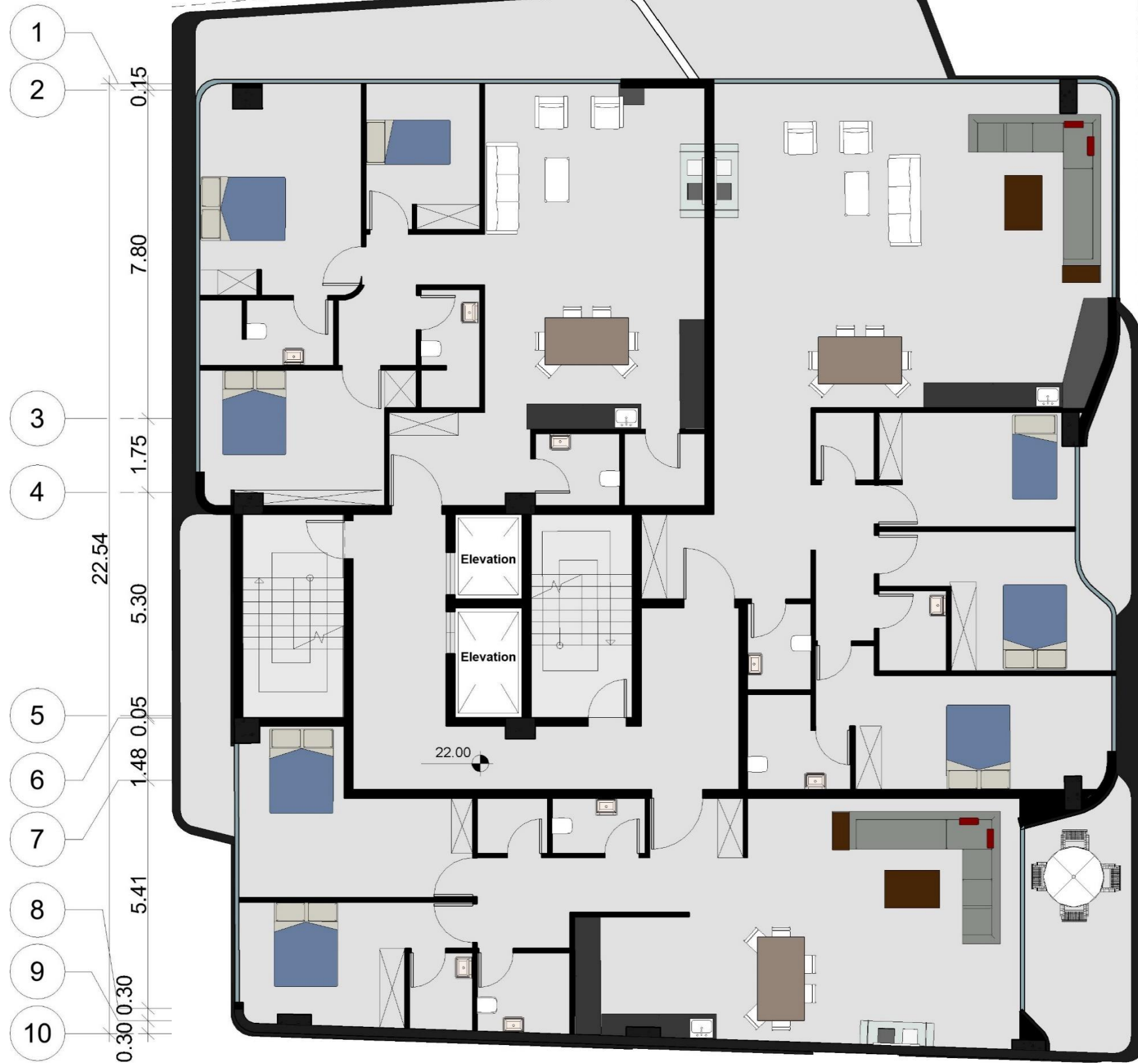
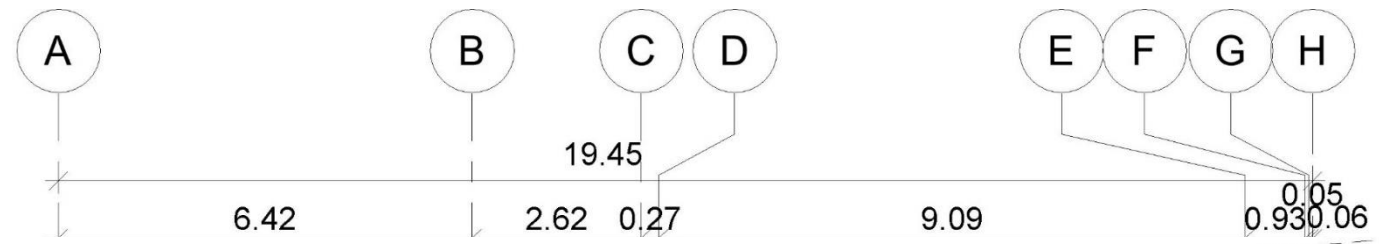
AREA
TOTAL AREA: 580
LOBBY: 26

UNIT 1: 170
UNIT 2: 200
UNIT 3: 135



**ARCHITECTURAL
PLAN**

*FURNITURE PLAN FOR
GROUND FOURTH



**ARCHITECTURAL
PLAN**

*FURNITURE PLAN FOR
GROUND FIFTH

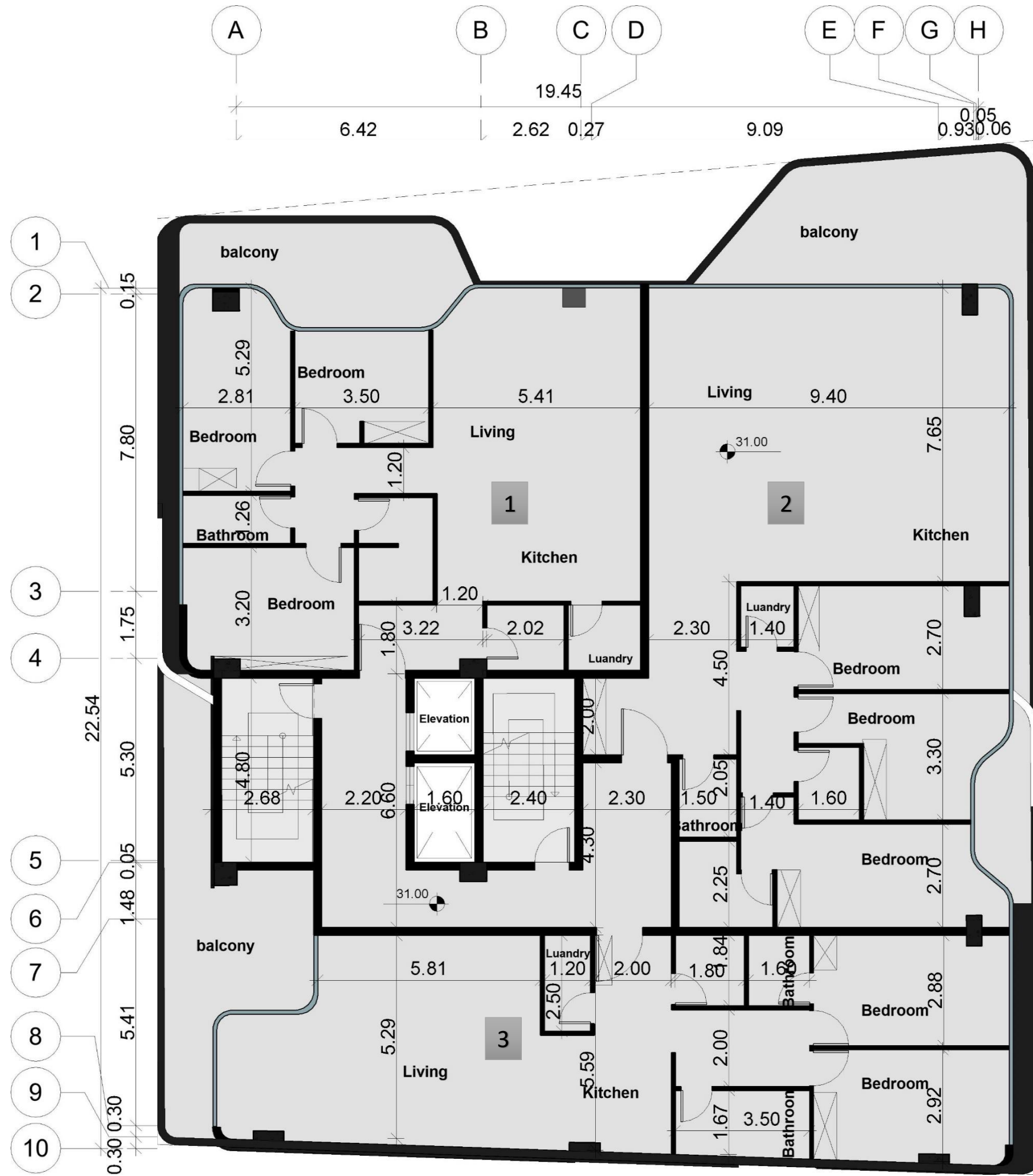


**ARCHITECTURAL
PLAN**

*SIXTH FLOOR PLAN

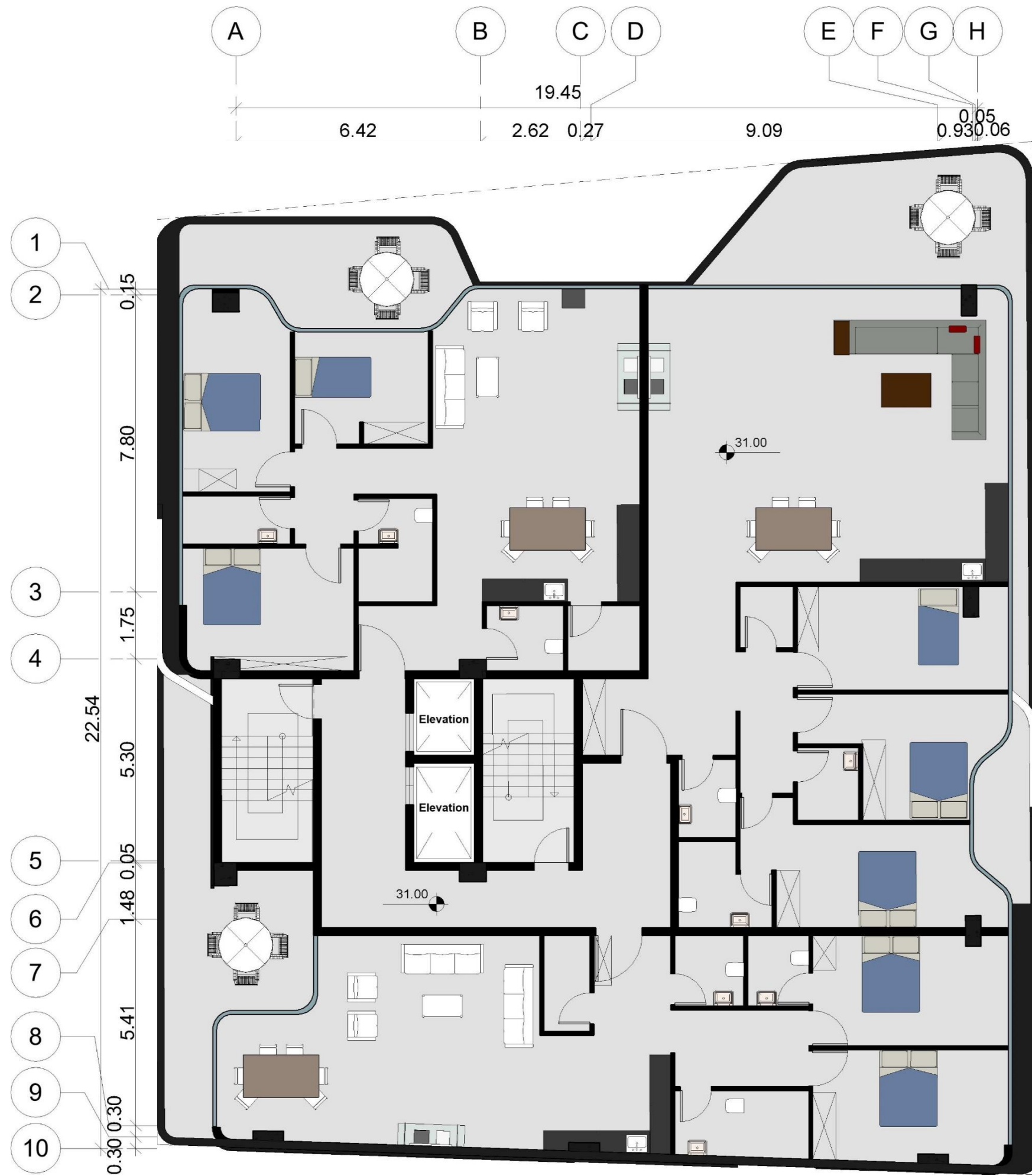
AREA
TOTAL AREA: 580
LOBBY: 26

UNIT 1: 170
UNIT 2: 200
UNIT 3: 135



**ARCHITECTURAL
PLAN**

*FURNITURE PLAN FOR
GROUND SIXTH

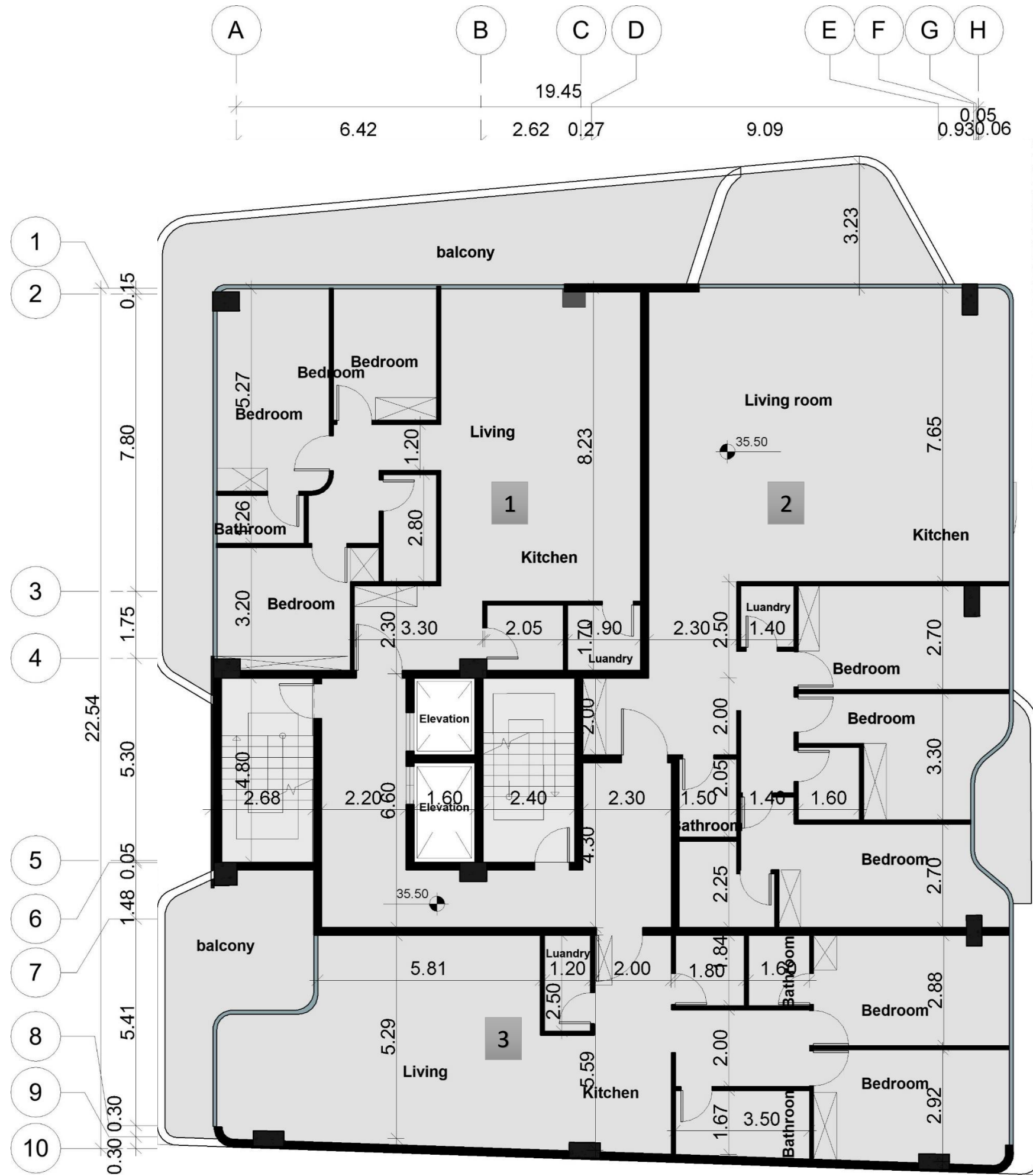


ARCHITECTURAL PLAN

*SEVENTH FLOOR PLAN

AREA
TOTAL AREA: 580
LOBBY: 26

UNIT 1: 170
UNIT 2: 200
UNIT 3: 135



**ARCHITECTURAL
PLAN**

*FURNITURE PLAN FOR
GROUND SEVENTH

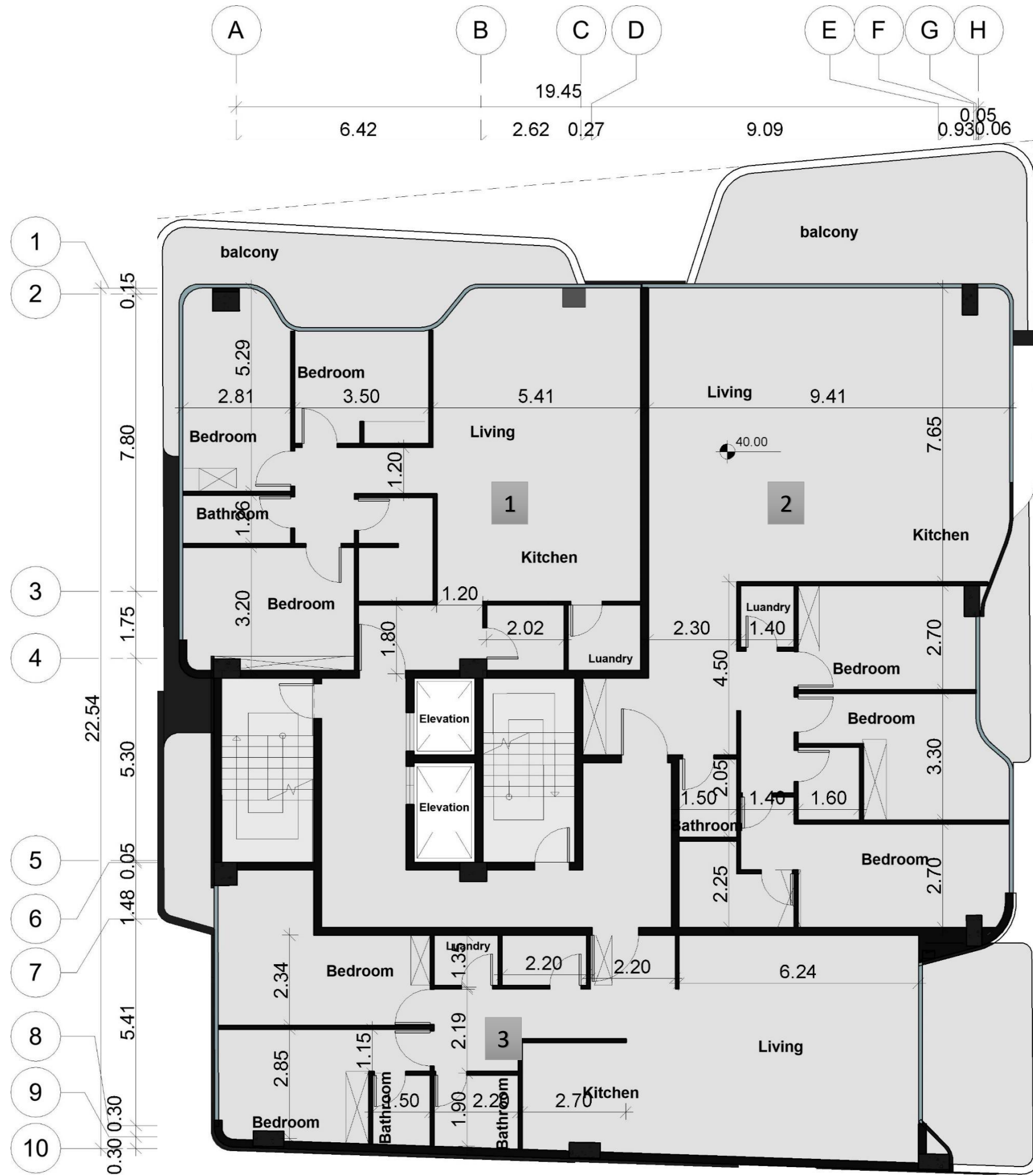


ARCHITECTURAL PLAN

*EIGHTH
FLOOR PLAN

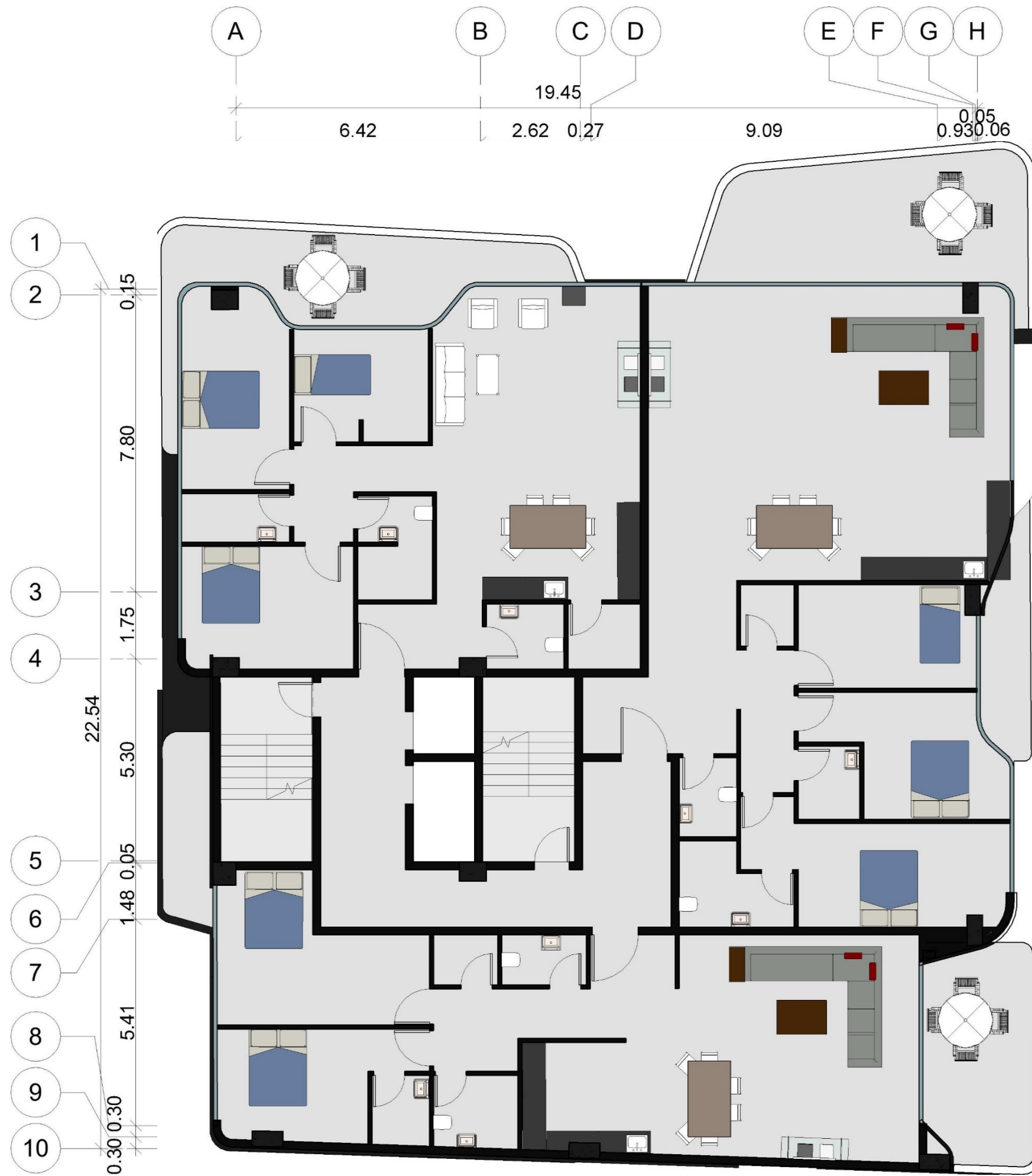
AREA
TOTAL AREA: 580
LOBBY: 26

UNIT 1: 170
UNIT 2: 200
UNIT 3: 135



**ARCHITECTURAL
PLAN**

*FURNITURE PLAN FOR
GROUND EIGHTH



**ARCHITECTURAL
PLAN**

*NINTH
FLOOR PLAN

AREA
TOTAL AREA: 580
LOBBY: 26

UNIT 1: 280
UNIT 2: 180



**ARCHITECTURAL
PLAN**

*FURNITURE PLAN FOR
GROUND NINTH

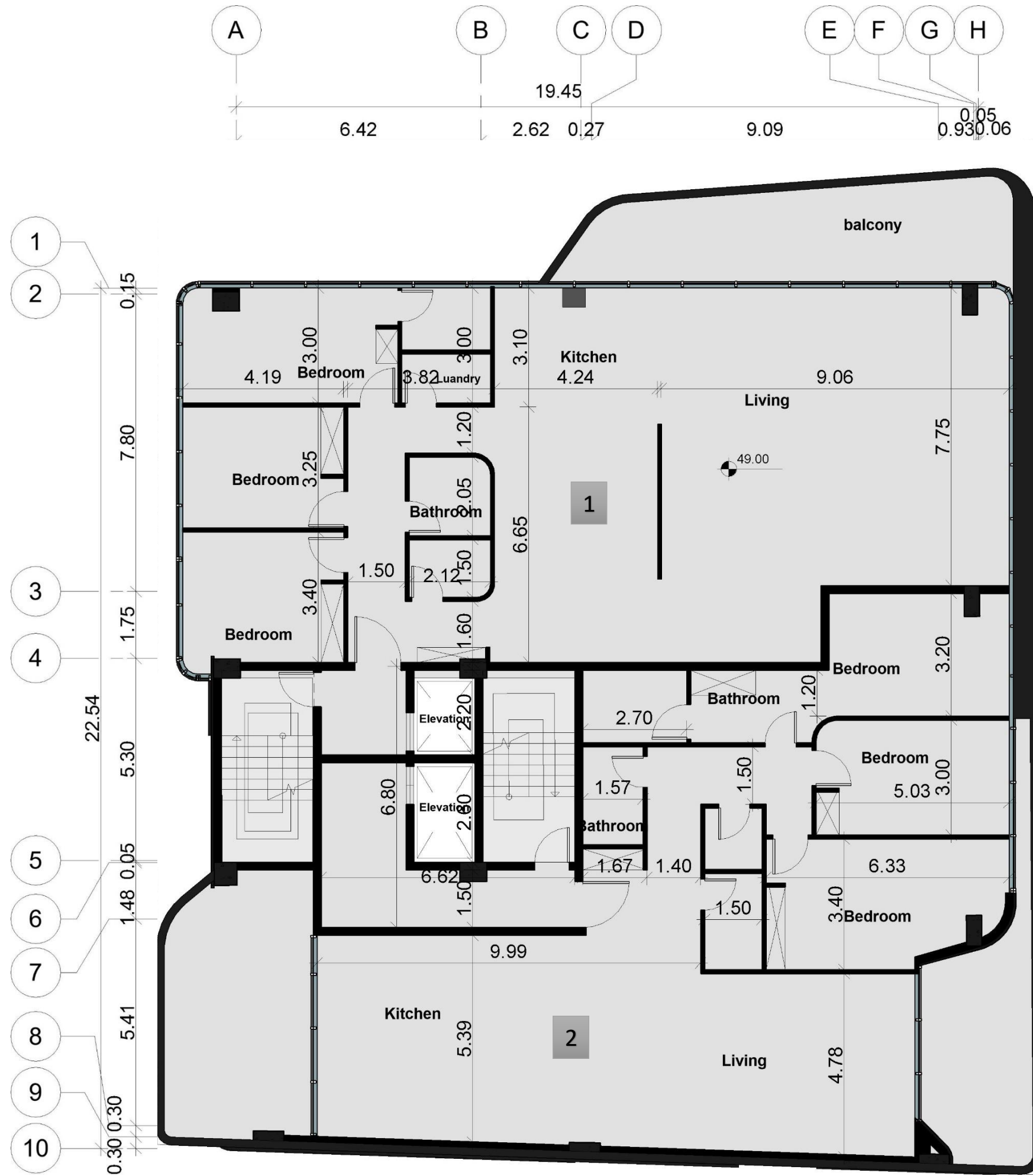


**ARCHITECTURAL
PLAN**

*TENTH
FLOOR PLAN

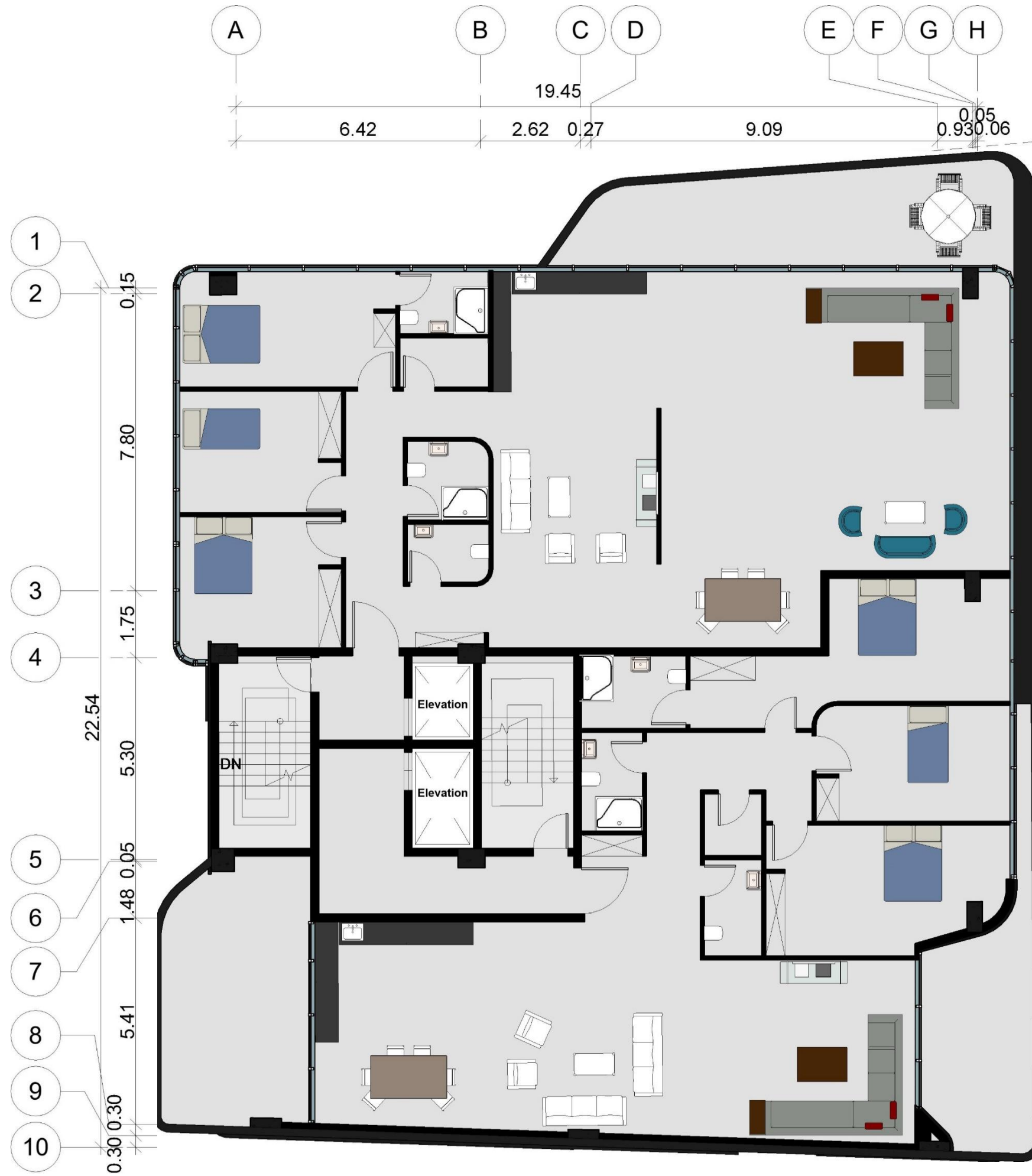
AREA
TOTAL AREA: 580
LOBBY: 26

UNIT 1: 280
UNIT 2: 180



**ARCHITECTURAL
PLAN**

*FURNITURE PLAN FOR
GROUND TENTH



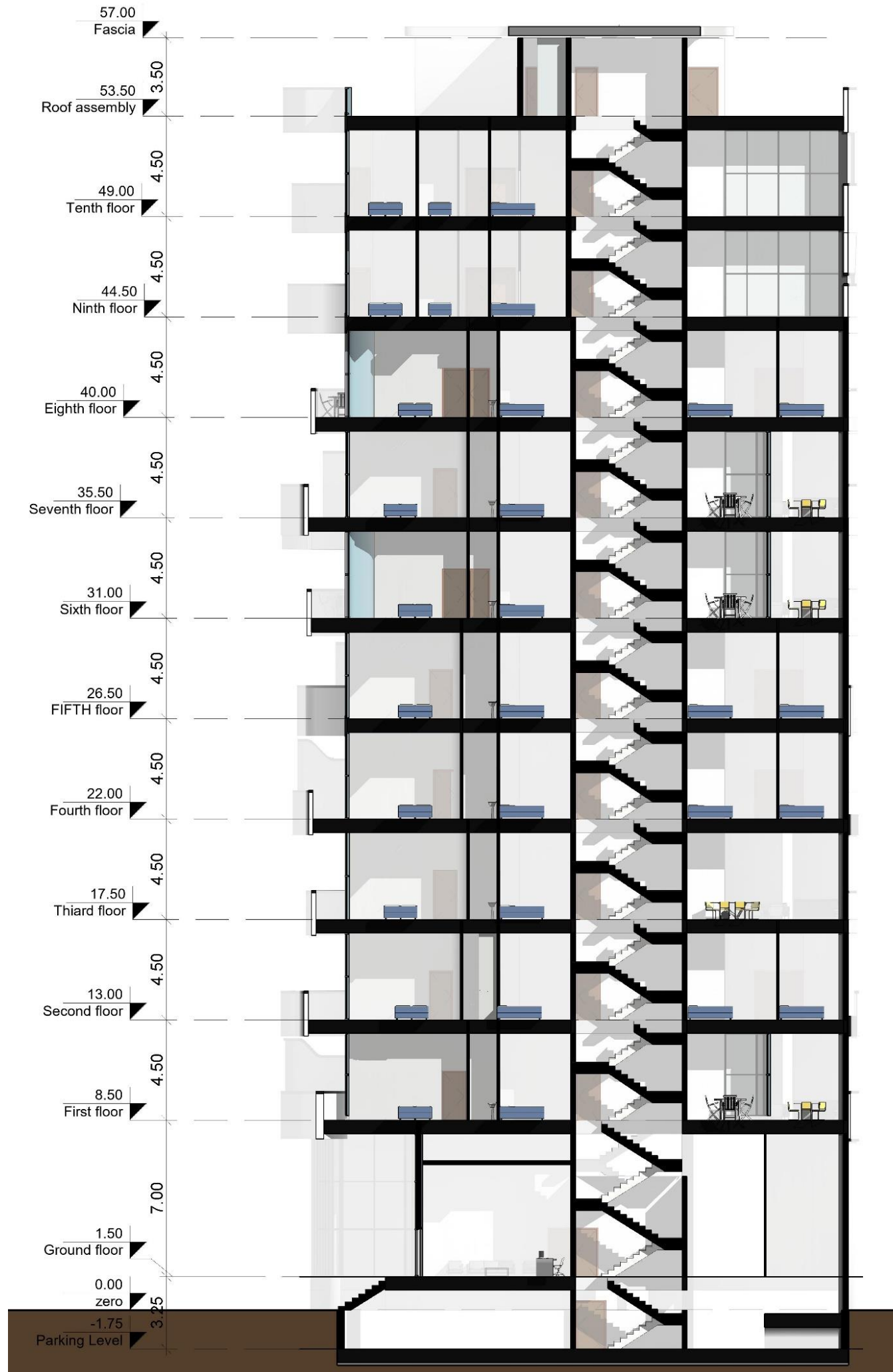
**ARCHITECTURAL
PLAN**

*ROOF GARDEN PLAN



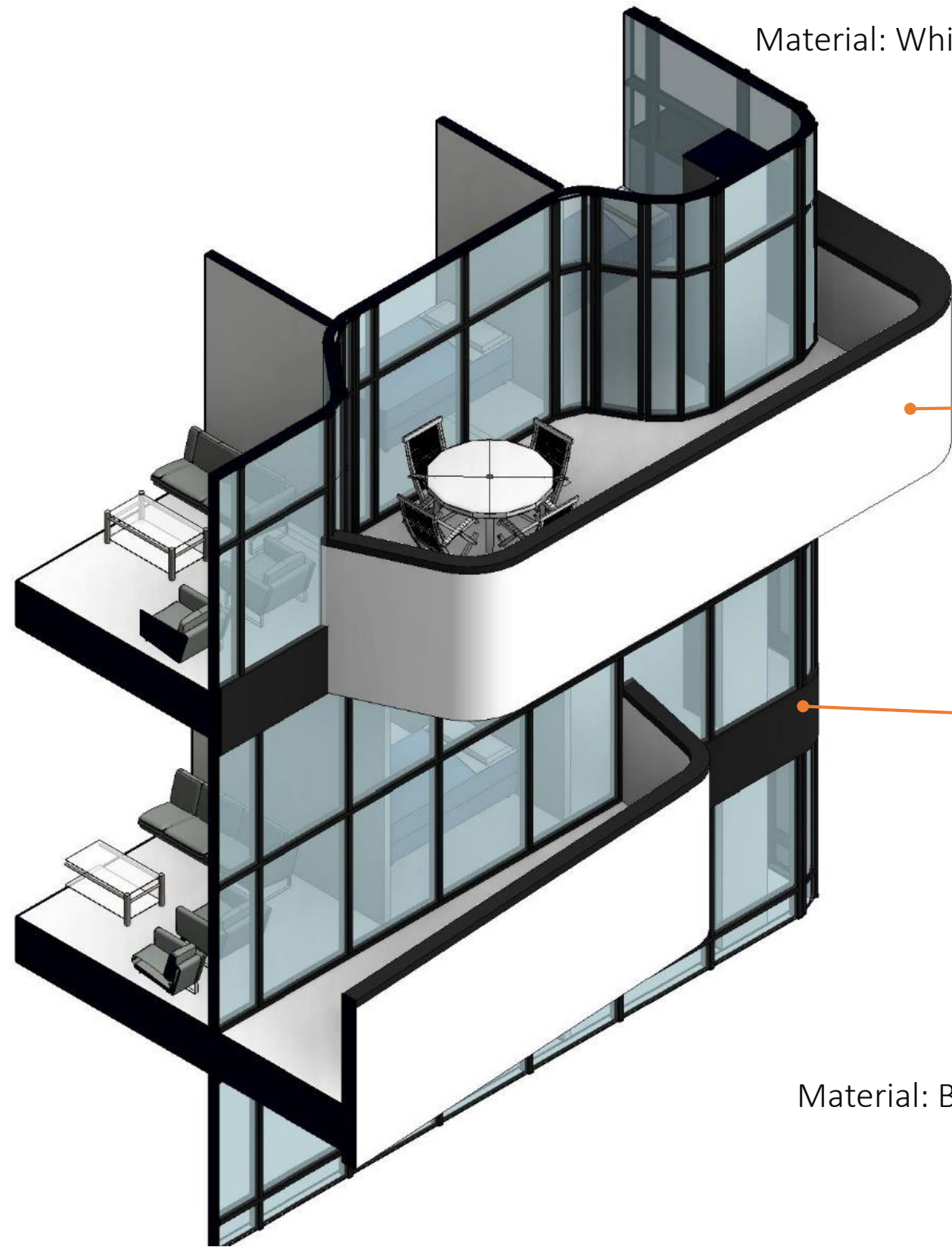
ARCHITECTURAL SECTION

VERTICAL SECTION THROUGH
BUILDING INTERIOR SHOWING
HEIGHT

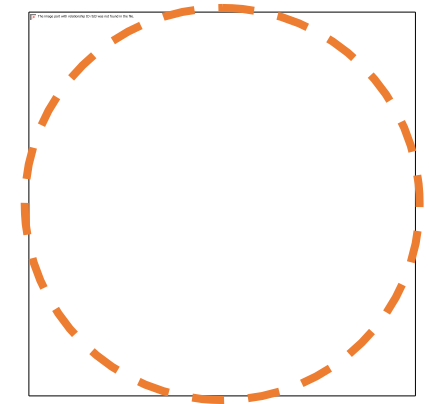


**ARCHITECTURAL
FACADE DETAILS**

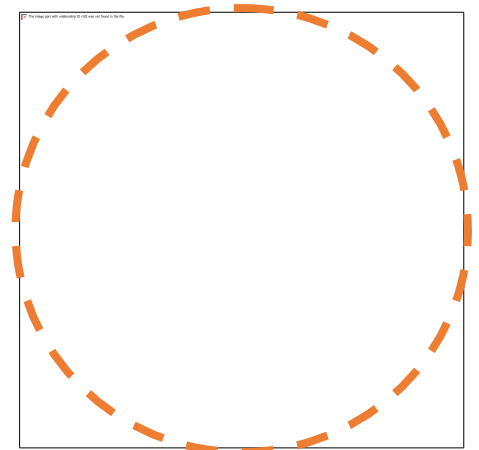
MATERIAL AND
DIMENSION DETAILS



Material: White plaster



Material: Black metal



***RENDERED VIEWS
OF ARCHITECTURAL PROJECT***



*RENDERED VIEWS OF
ARCHITECTURAL
PROJECT*



*RENDERED VIEWS OF
ARCHITECTURAL
PROJECT*



*RENDERED VIEWS OF
ARCHITECTURAL
PROJECT*



*RENDERED VIEWS OF
ARCHITECTURAL
PROJECT*



*RENDERED VIEWS OF
ARCHITECTURAL
PROJECT*



***RENDERED VIEWS OF
ARCHITECTURAL
PROJECT***



*RENDERED VIEWS OF
ARCHITECTURAL
PROJECT*



*MATERIALS TYPE
OF PROJECT*



ROW	MATERIALS TYPE	COLORS	COVERA GE PERCEN T
1	PLASTER	WHITE	55%
2	GLASS	TRANSP ARENCY	39%
3	STEEL SHEET SURROUNDED WITH LIGHT	BLACK	1%
4	BLACK METAL	BLACK	5%

END