

Contents

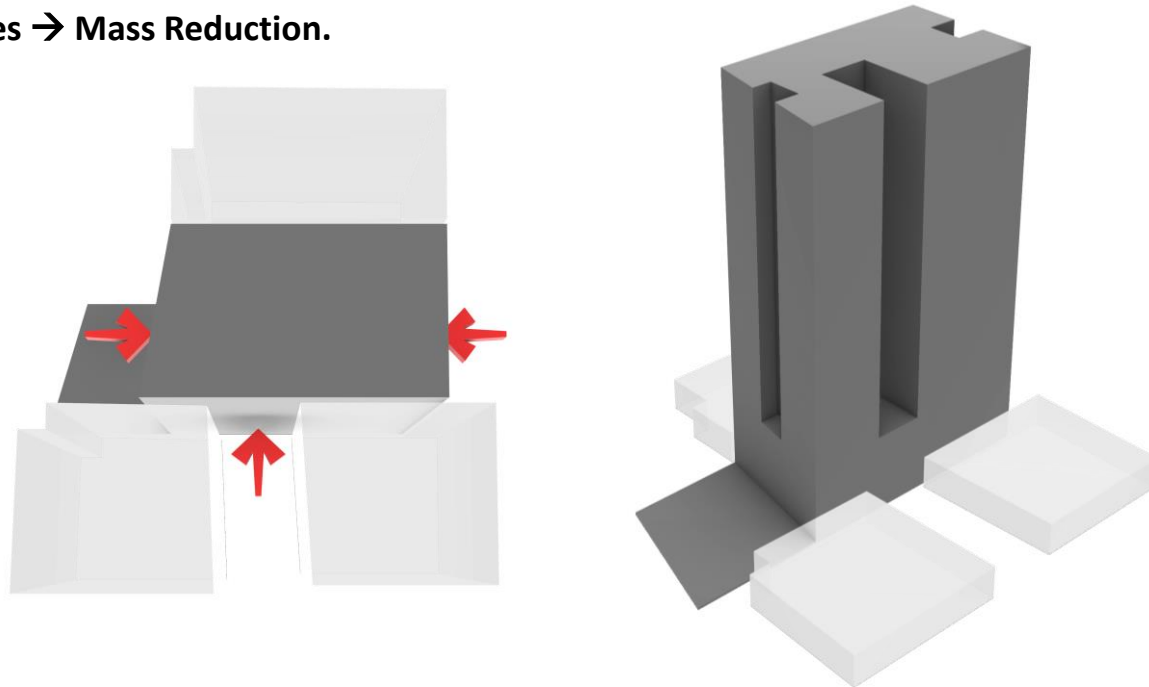
Pages

1	Main Posters	1
2	Design Process	11
3	Site Plan	12
4	Plans and Layouts	18
5	Sections	20
6	Elevations	21
7	Perspectives	23

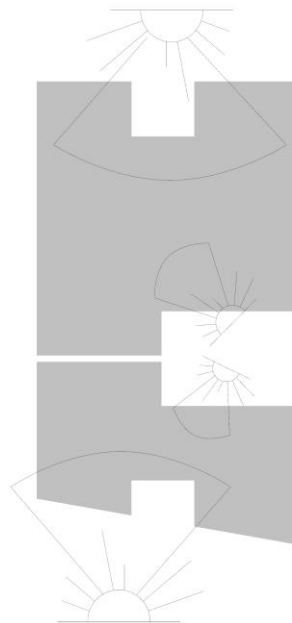
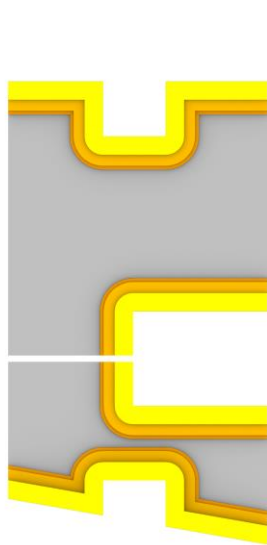
Main Posters



Semi-open spaces → Mass Reduction.

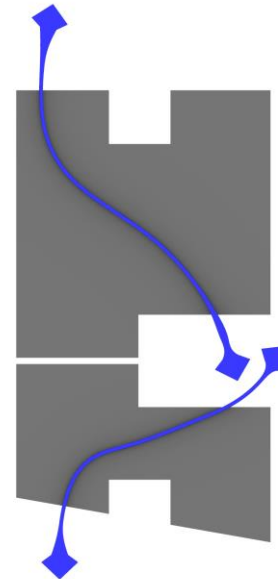


The central Semi-open Space shaped based on a multi-functional decision;

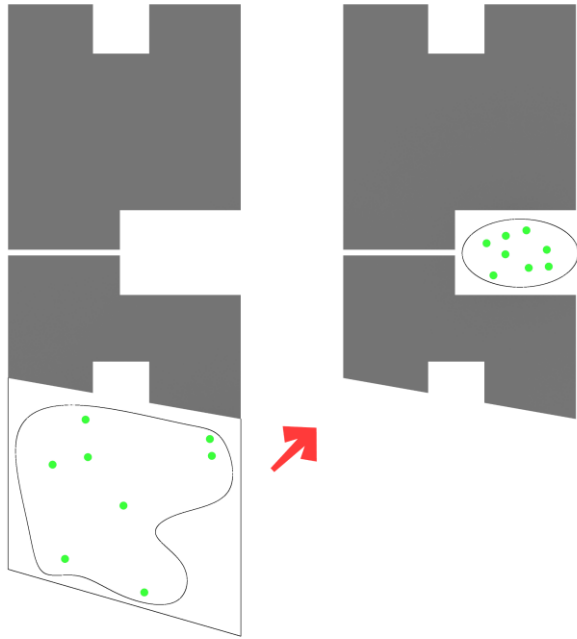


I) improve daylight for both the apartments.

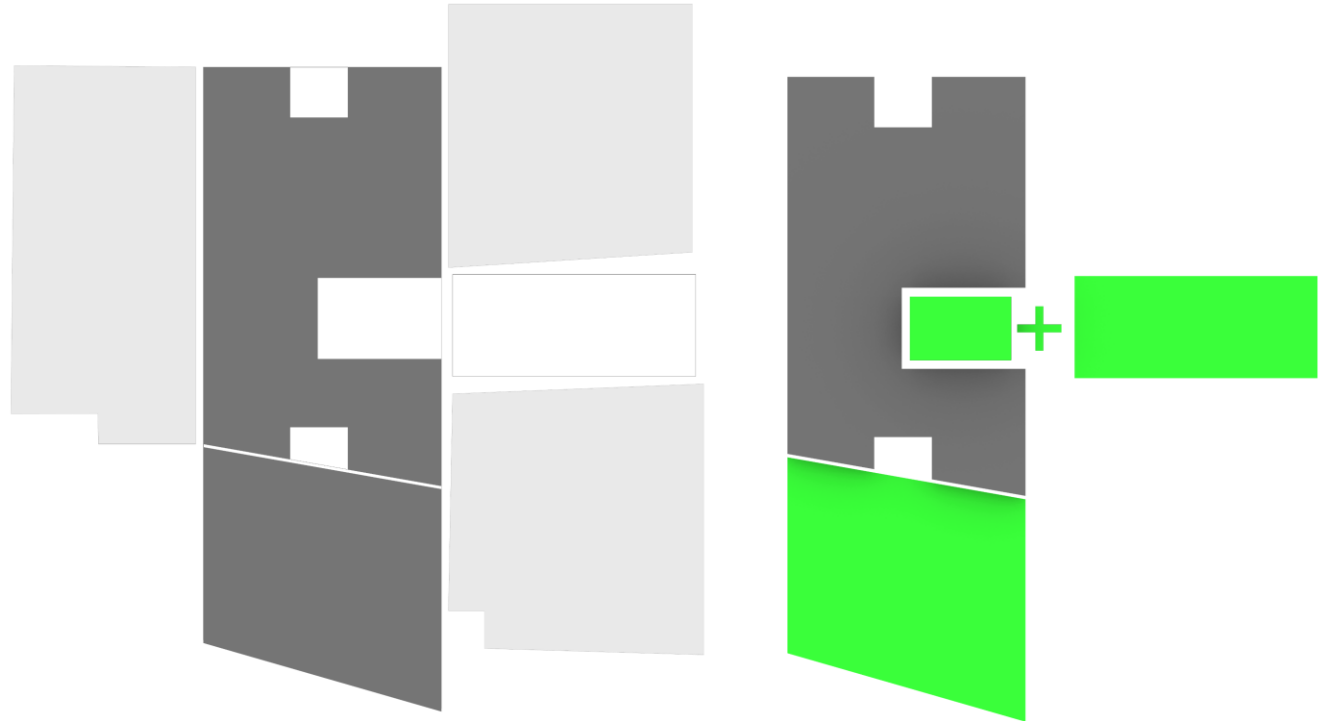
II) improve daylight for entire the stair box.

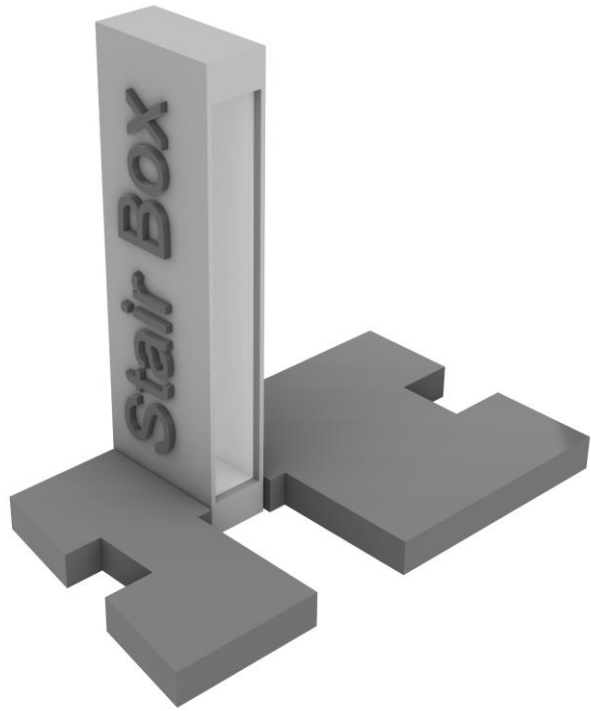


III) improve natural ventilation for the greenhouse located in the ground floor.



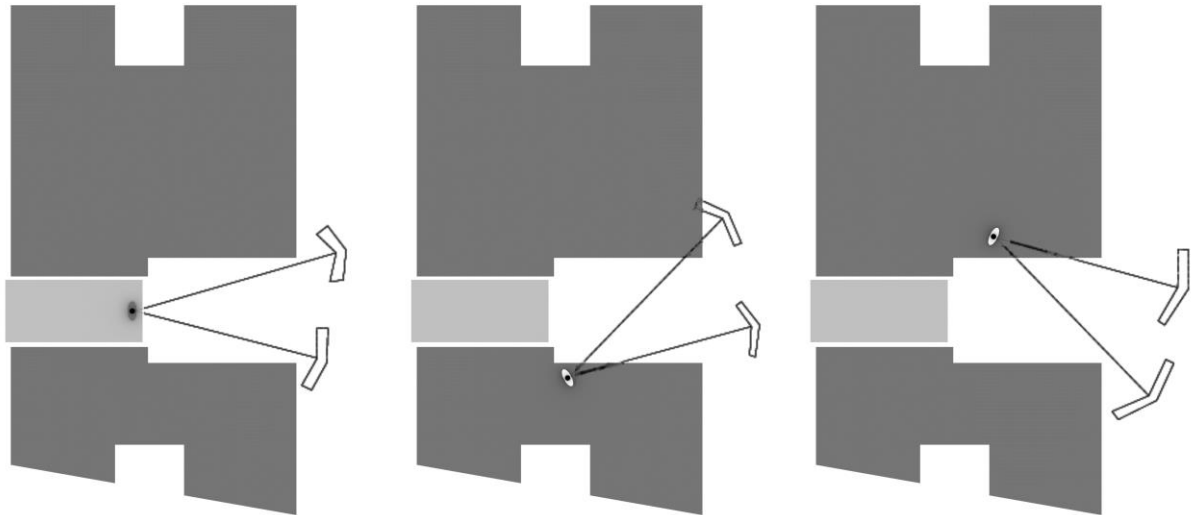
IV) And creating a green space that qualify the atmosphere.

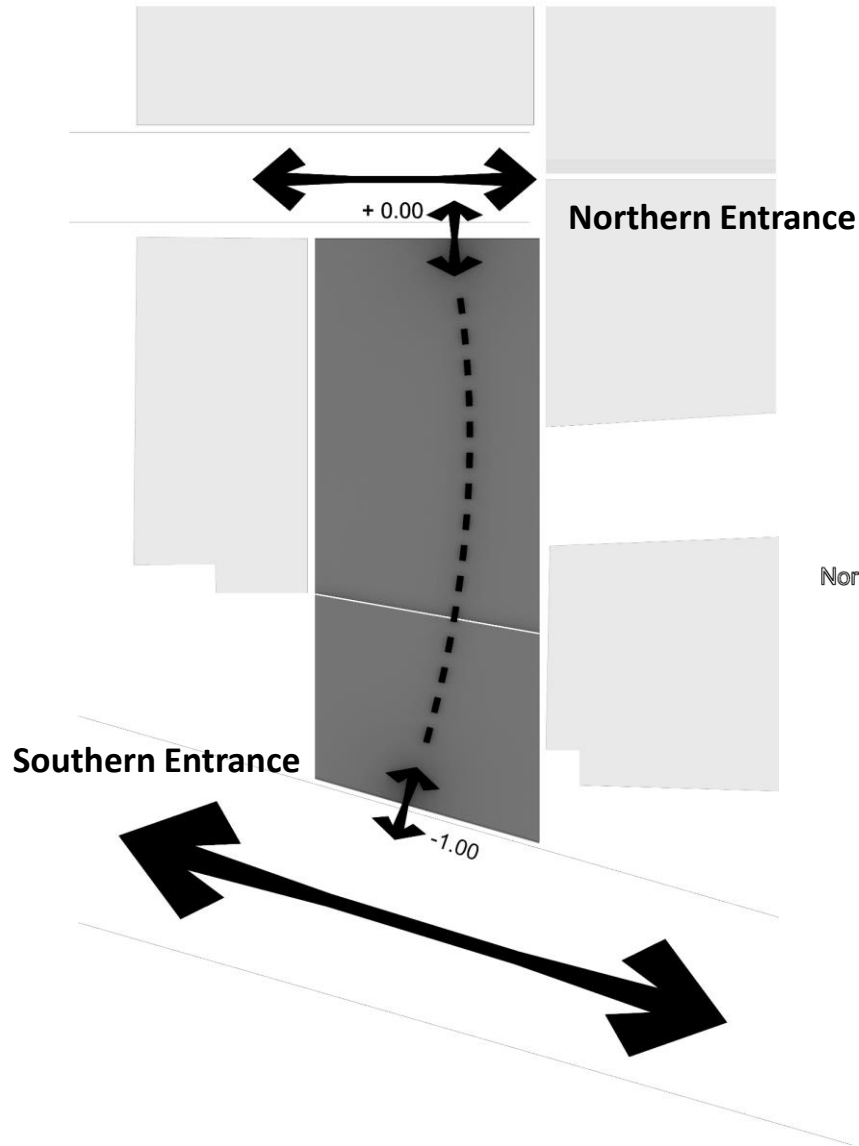




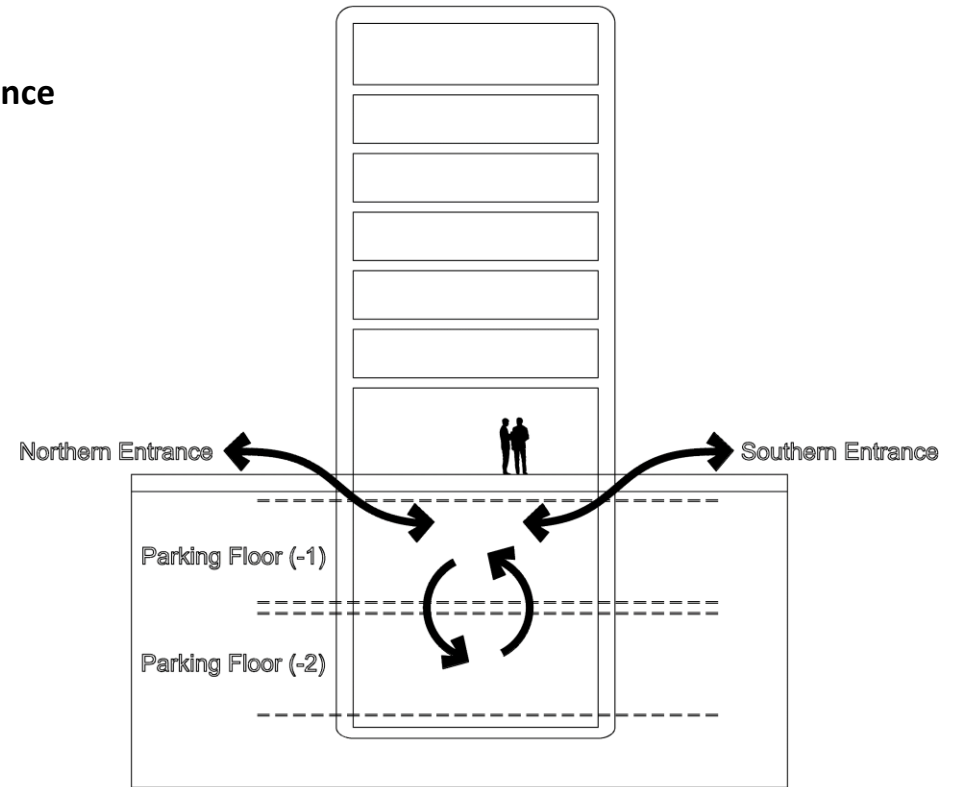
V) Improving both the view and space qualities from all the locations such as inside of the apartments and the all the stair box levels.

With such a stair box qualifications, the residents encouraged to use it more than the usual.



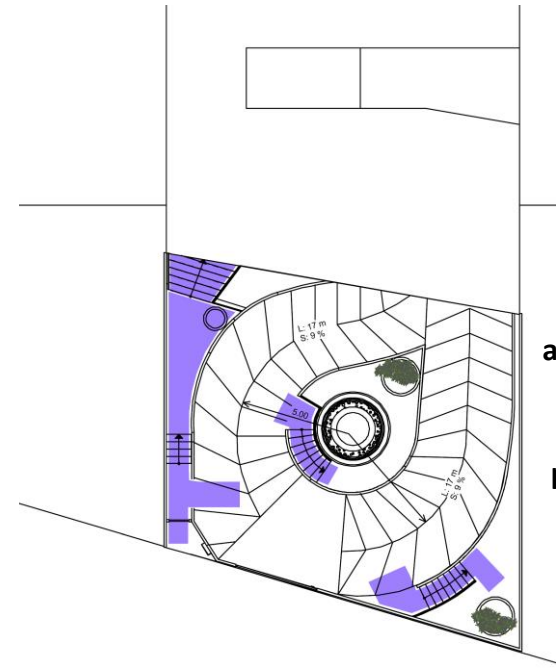


Design for the car maneuvers in parking.

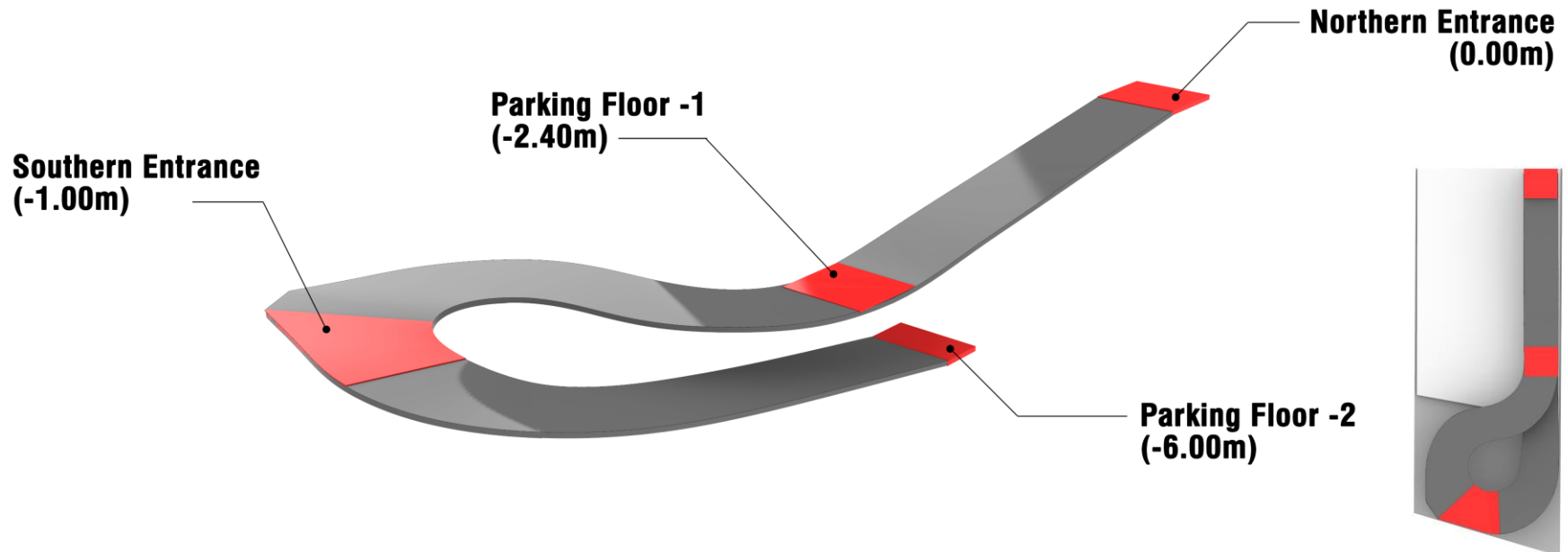


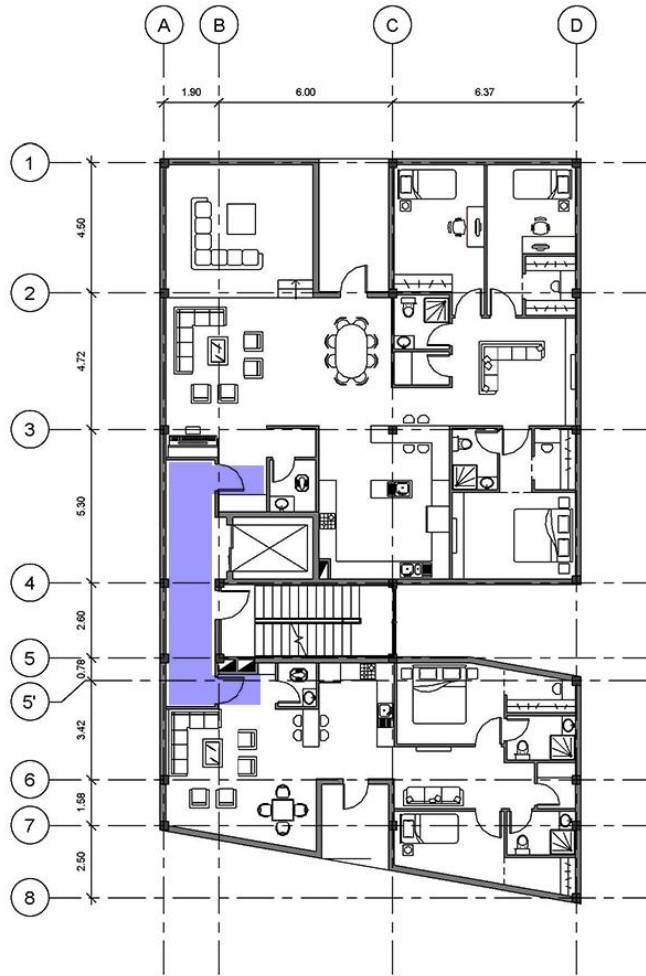
The RAMP is shaped based on a multi-functional and integrated decision;

- I) For providing the connectivity between the northern entrance and the southern entrance.
- II) For providing the accessibility both the parking (-1) and parking (-2).
- III) Esthetic features in the yard landscape and the daylight improvements in both parking and basement.



Residents have ample accessibility to move around the courtyard and relax comfortably. The blue color indicates the pathways for utilizing all areas of the yard.

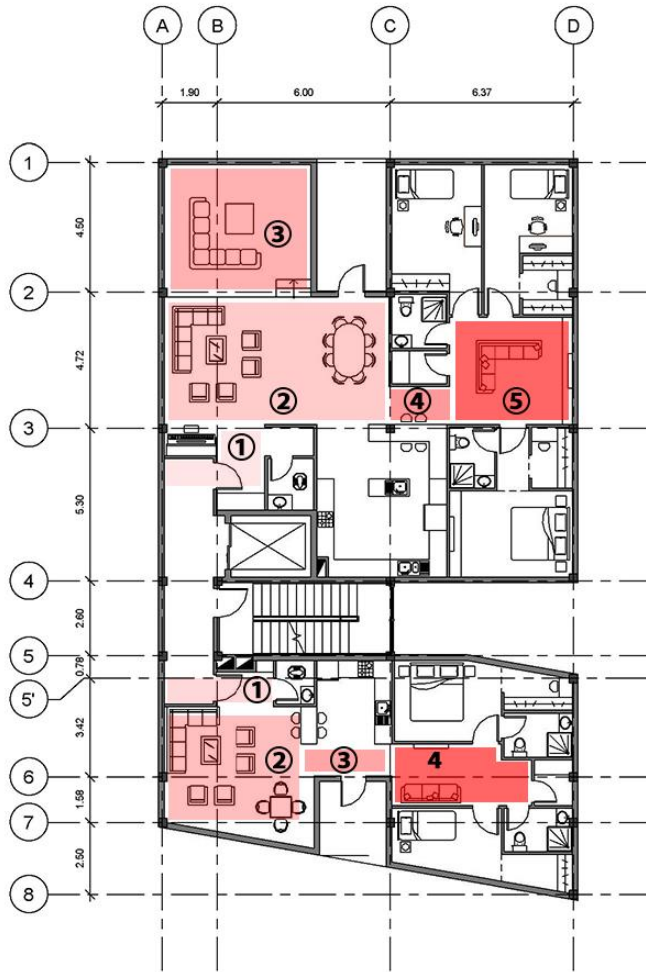




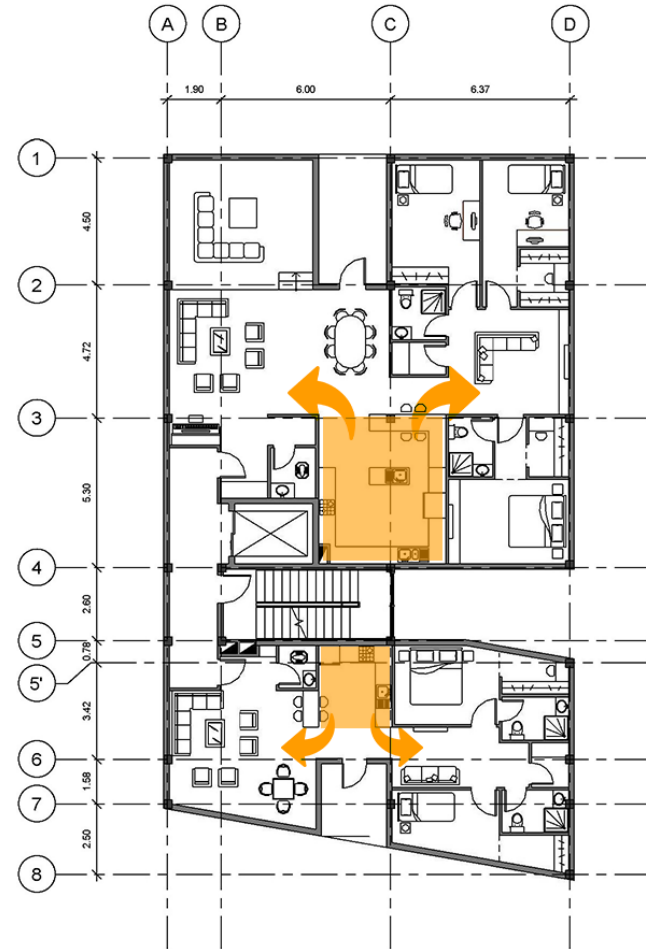
The entrance of both the apartments located based on preserving the privacy and preventing of visual connectivity to each other.



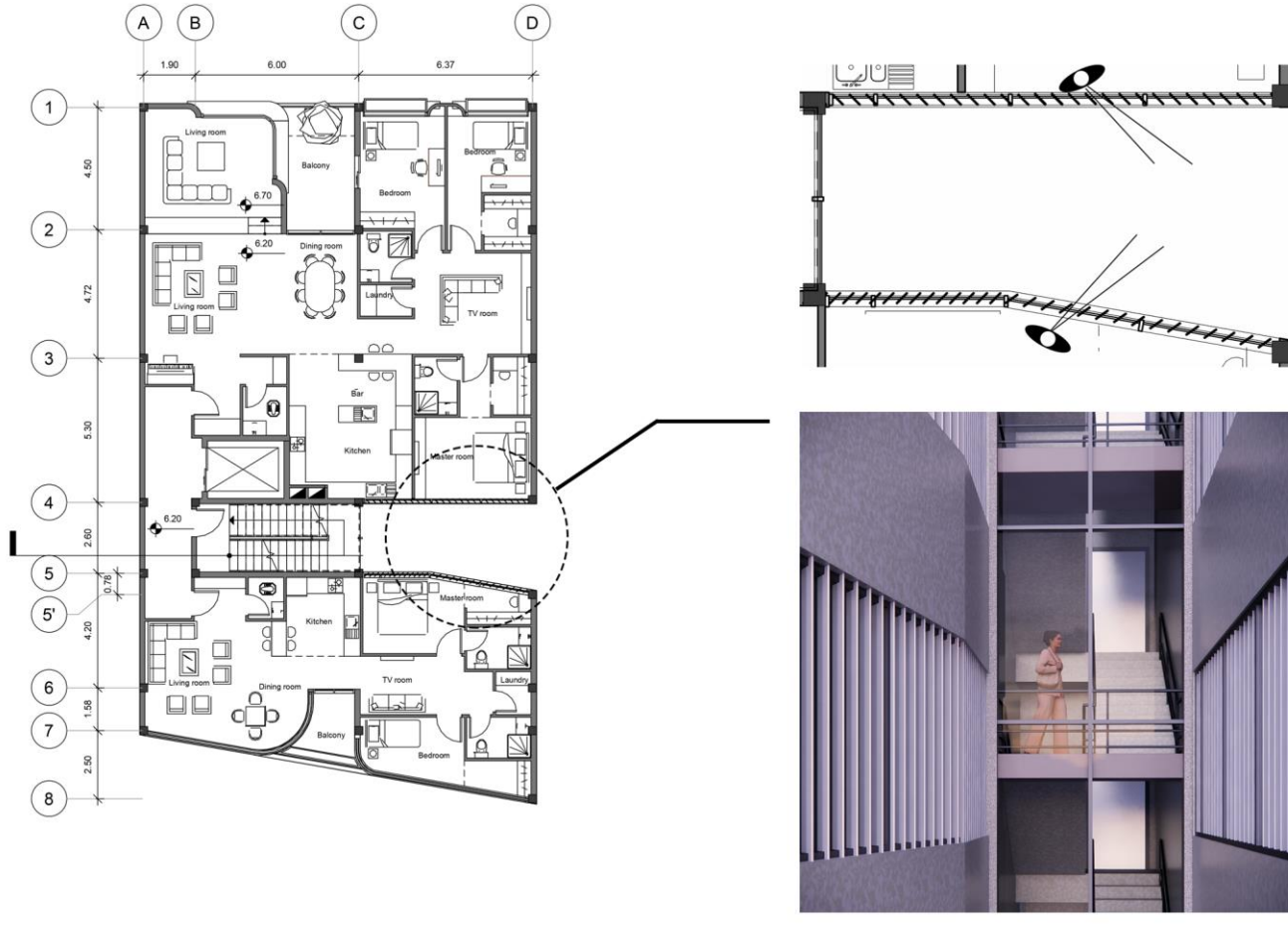
Each of the balconies located where can support the most spaces in both apartments.



The main layout of both plans drew based on the privacy hierarchies.

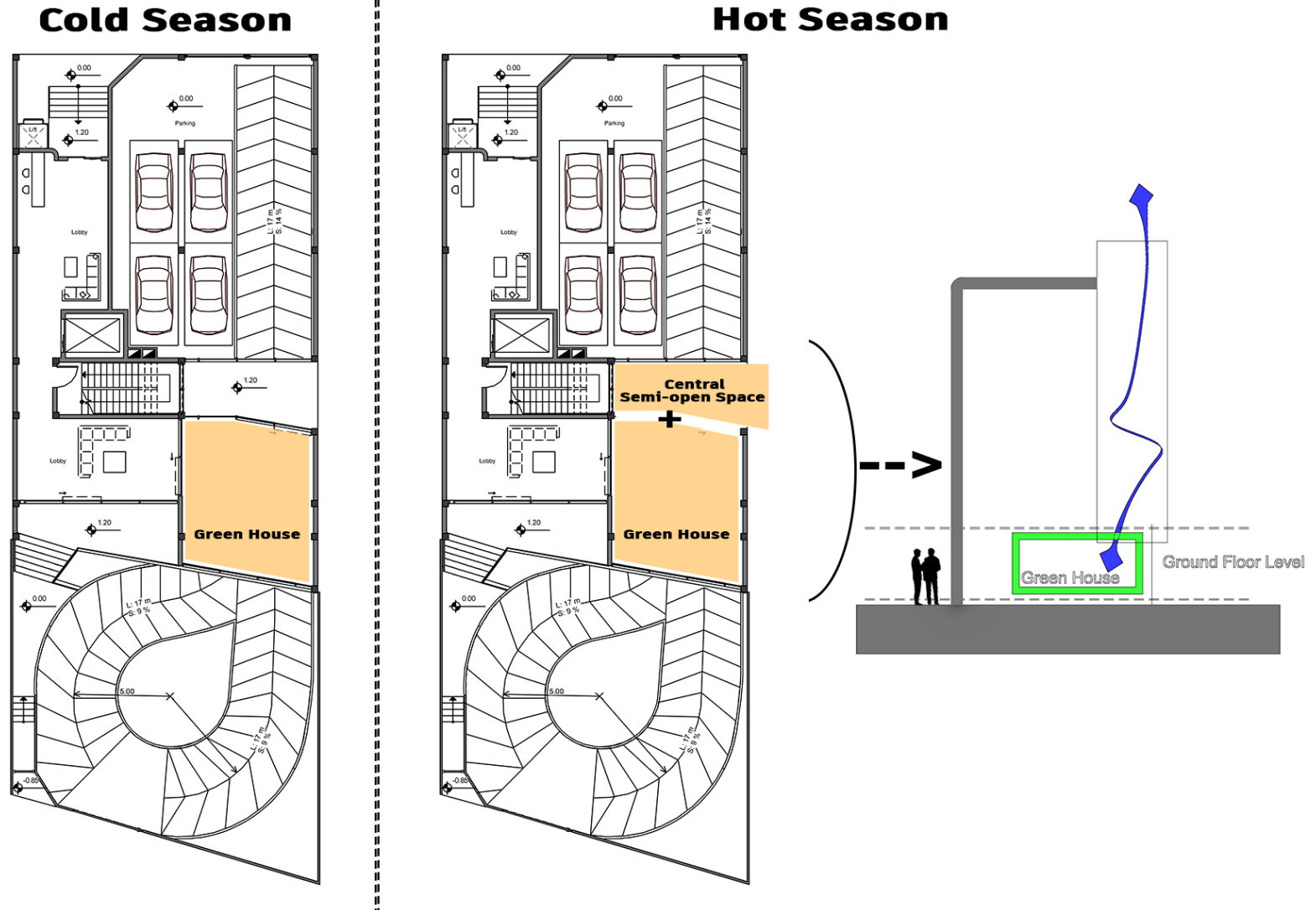


Both kitchens located where have ability to service whole the spaces.



The vertical louvers are designed with optimized angles to ensure privacy by blocking the view between apartments.

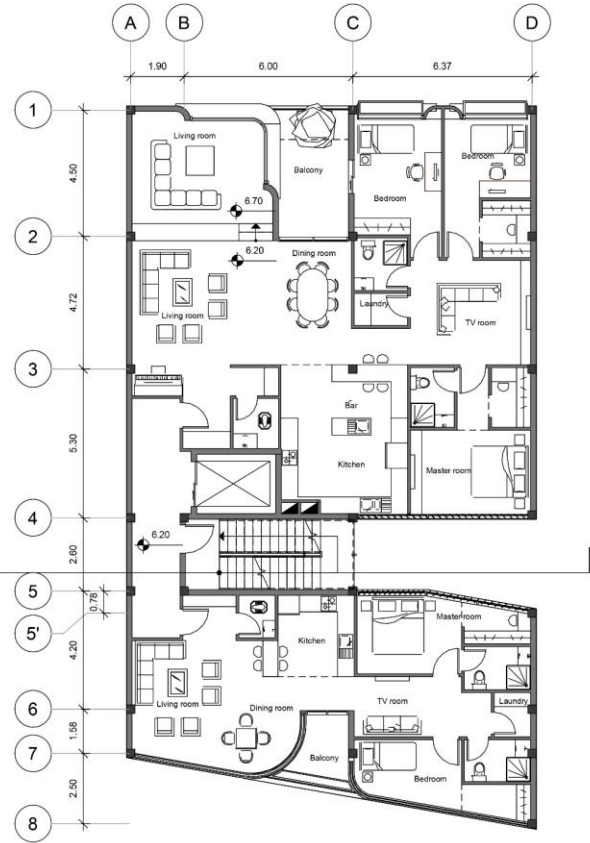
They also allow sufficient daylight to enter and provide residents with a view of the greenery outside.



"The "Green House" can merge with the "Central Semi-open Space during the hot season in order to prevent the excessive heating and also qualify the Ground floor so much better



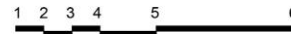


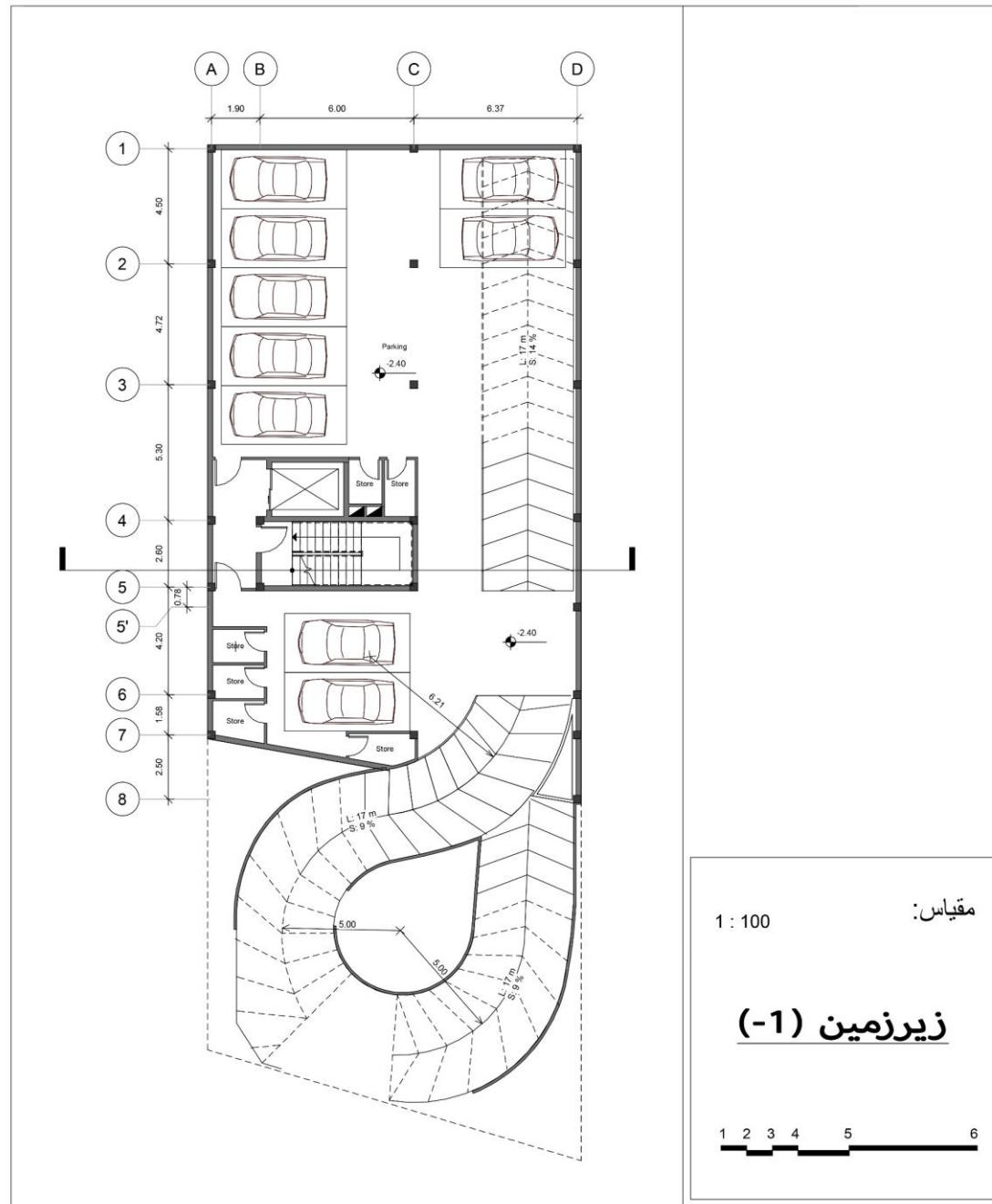


1 : 100

مقياس:

طبقة اول

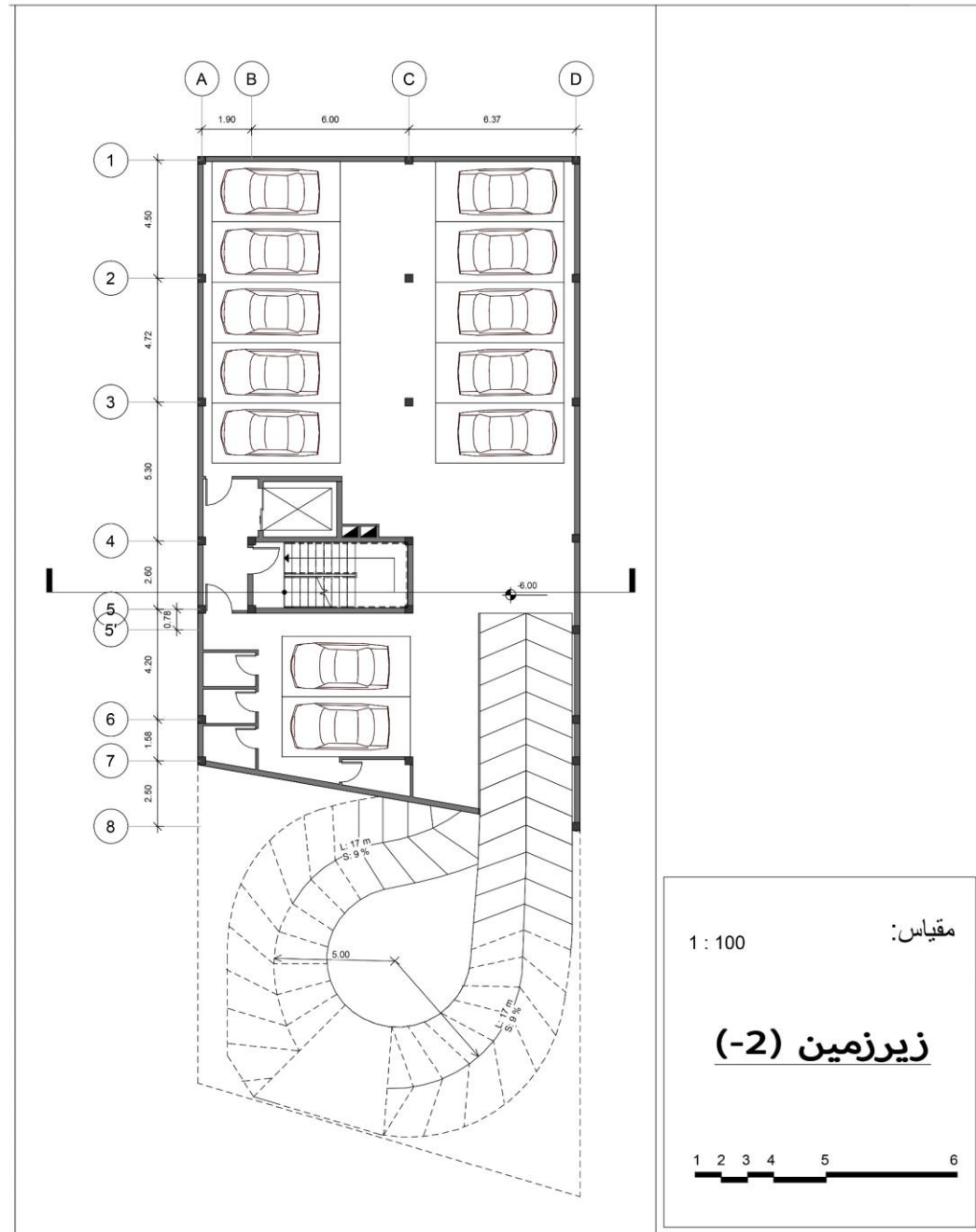


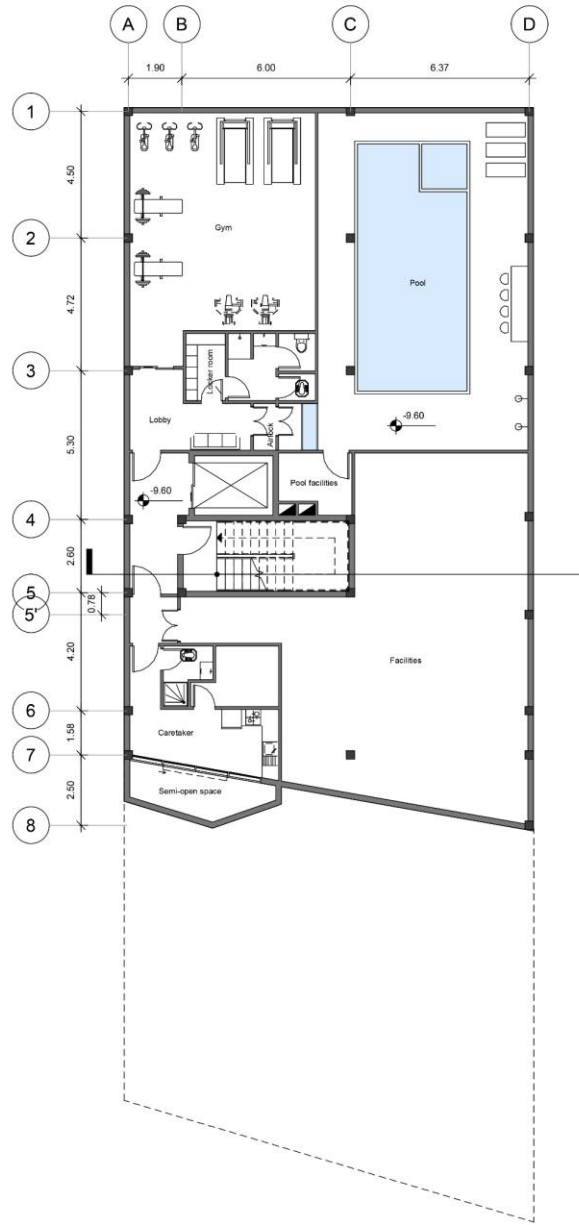


مقیاس: 1 : 100

زیرزمین (-1)

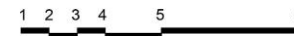


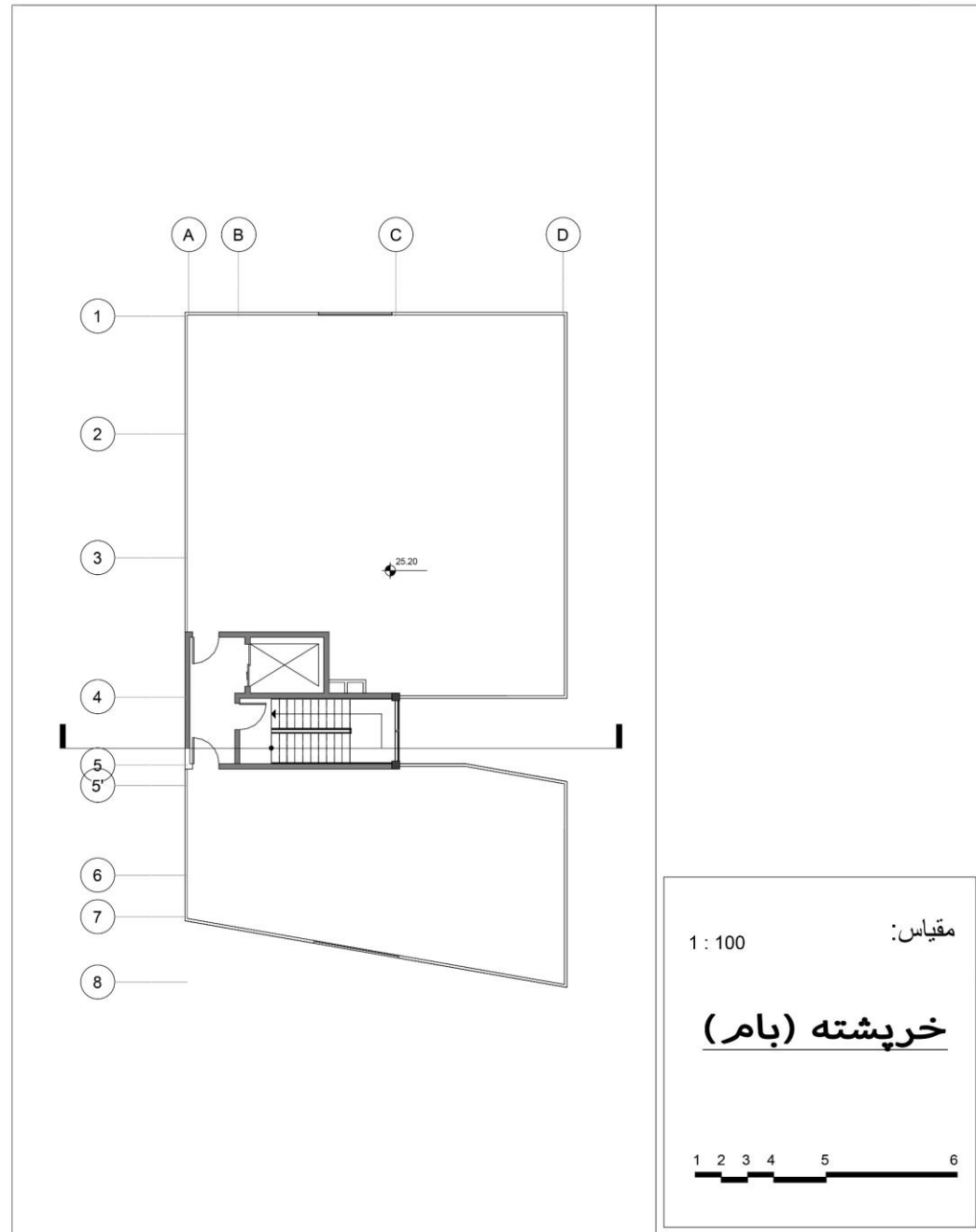


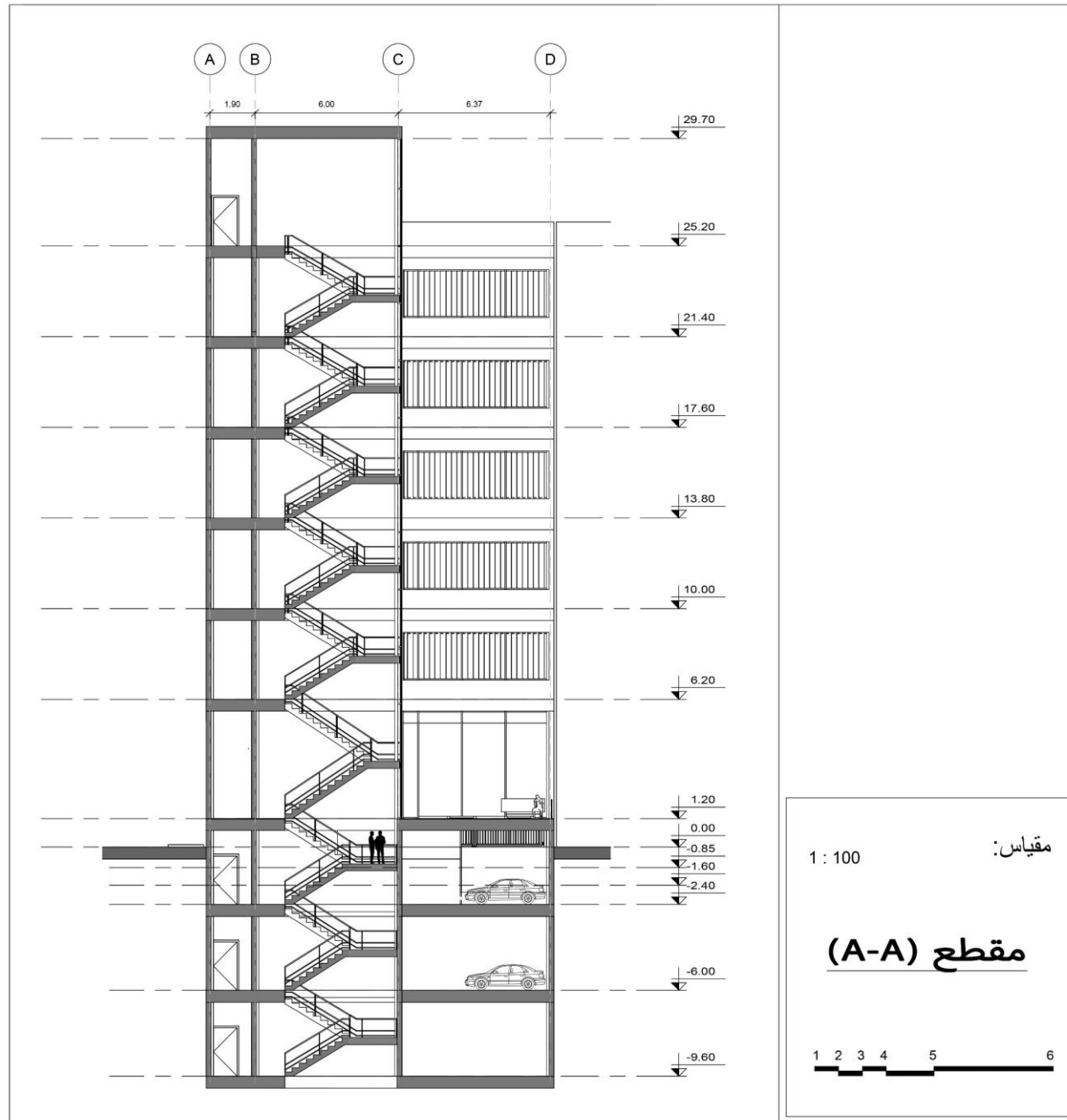


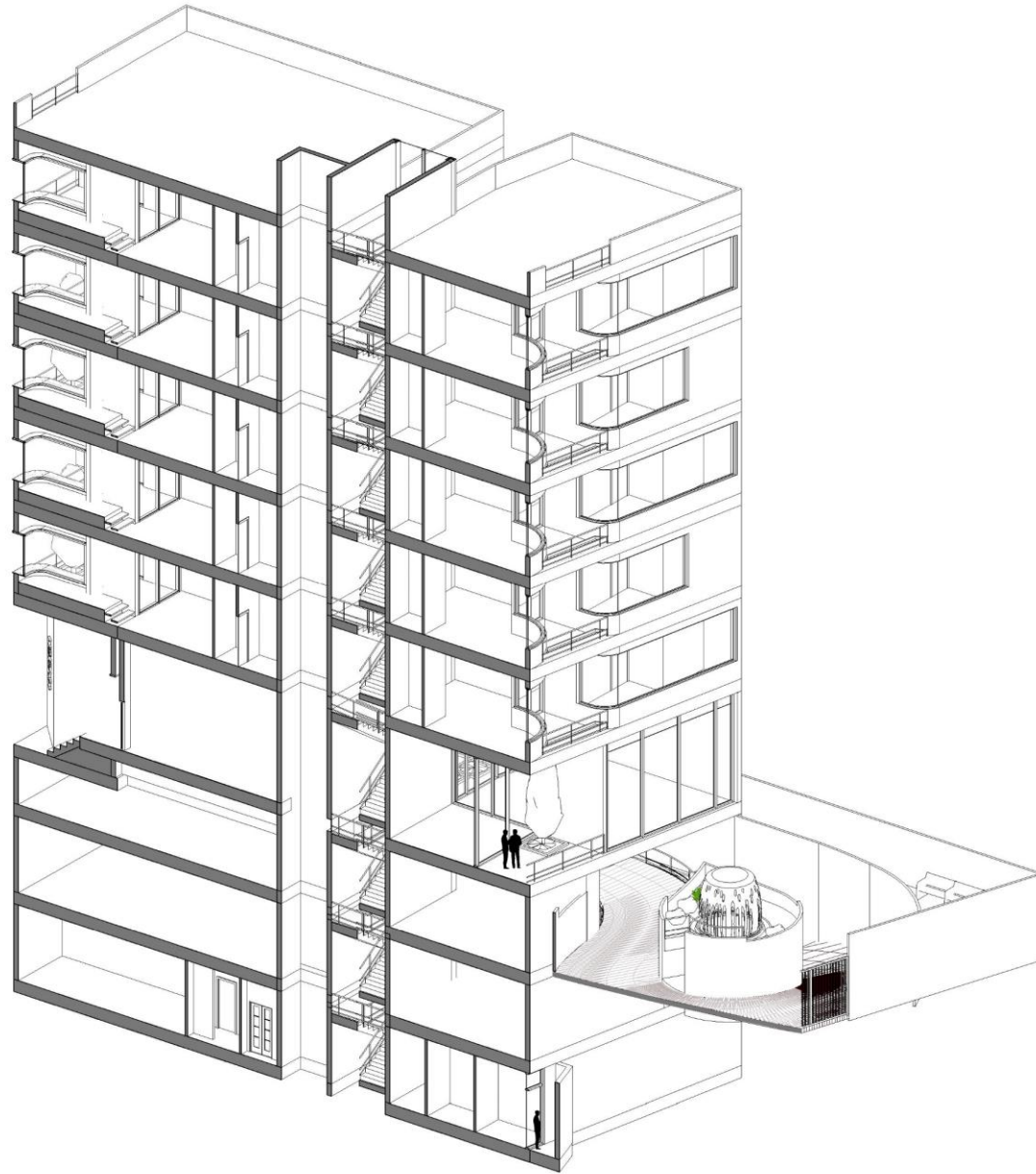
مقیاس: 1 : 100

زیرزمین (-3)

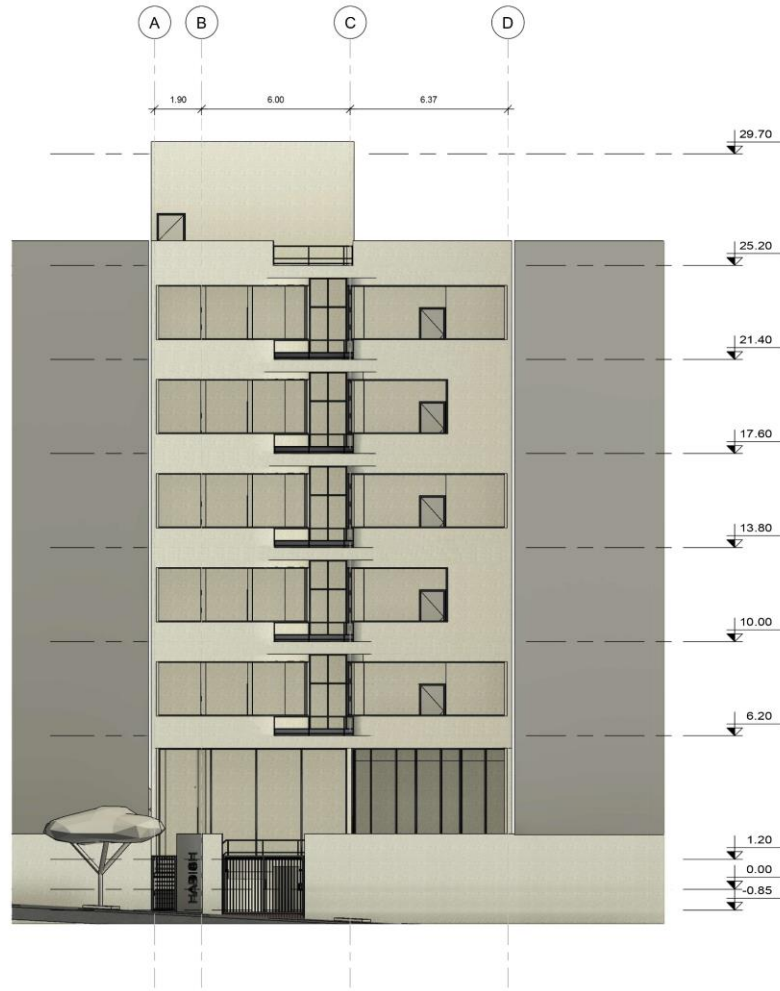






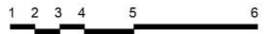


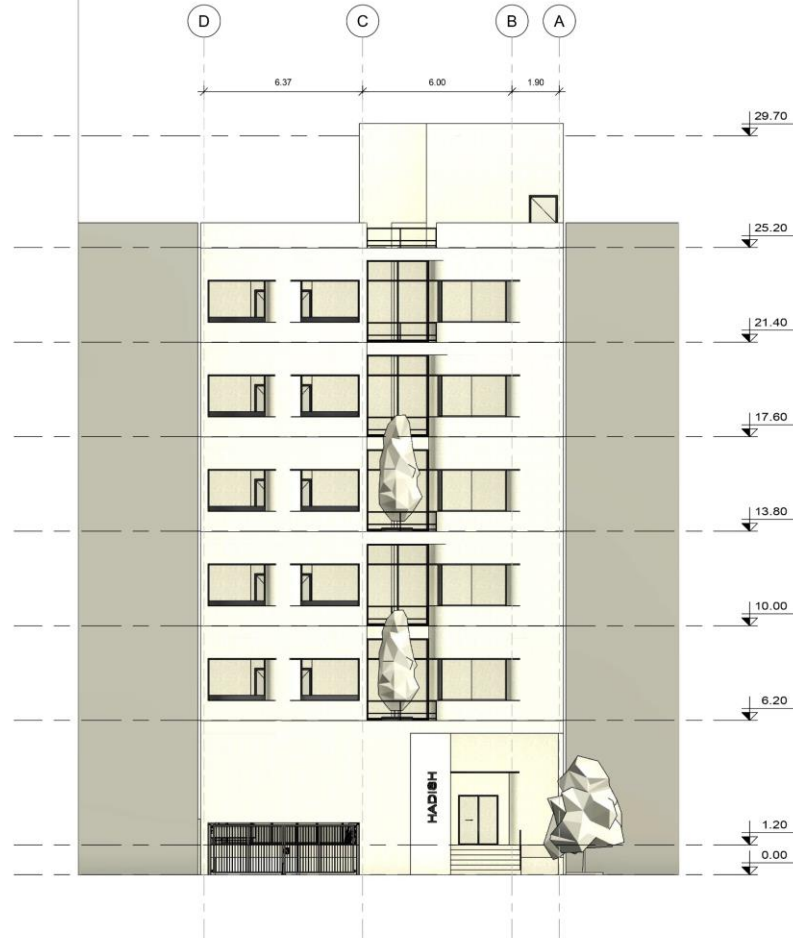
مقطع سه بعدی
ایزومتریک



مقیاس: 1 : 100

نمای جنوبی

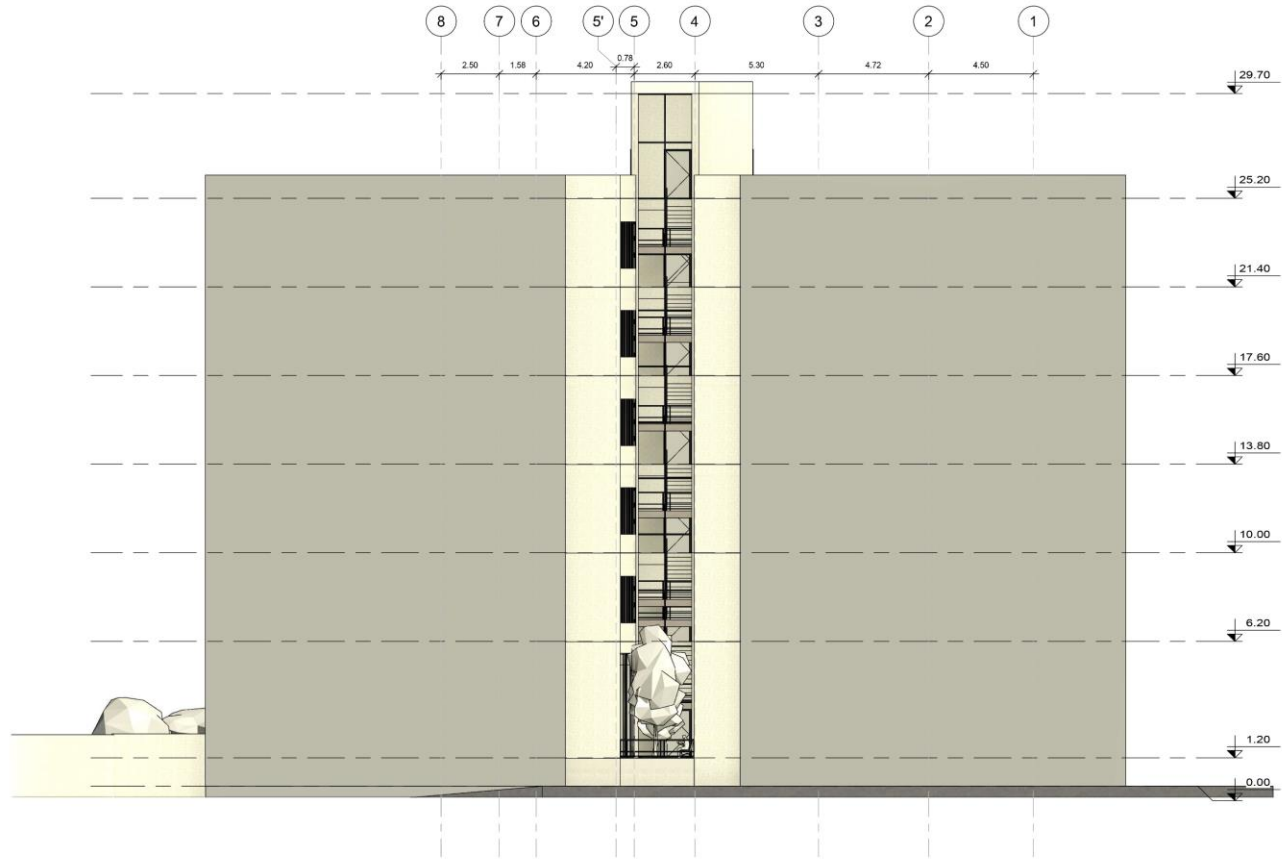




مقیاس: 1 : 100

نمای شمالی





1 : 100

مقیاس:

نمای شرقی



Perspectives



Perspectives



Perspectives



Perspectives



Perspectives



Perspectives



Perspectives



Perspectives



Perspectives



Perspectives



Perspectives





Perspectives



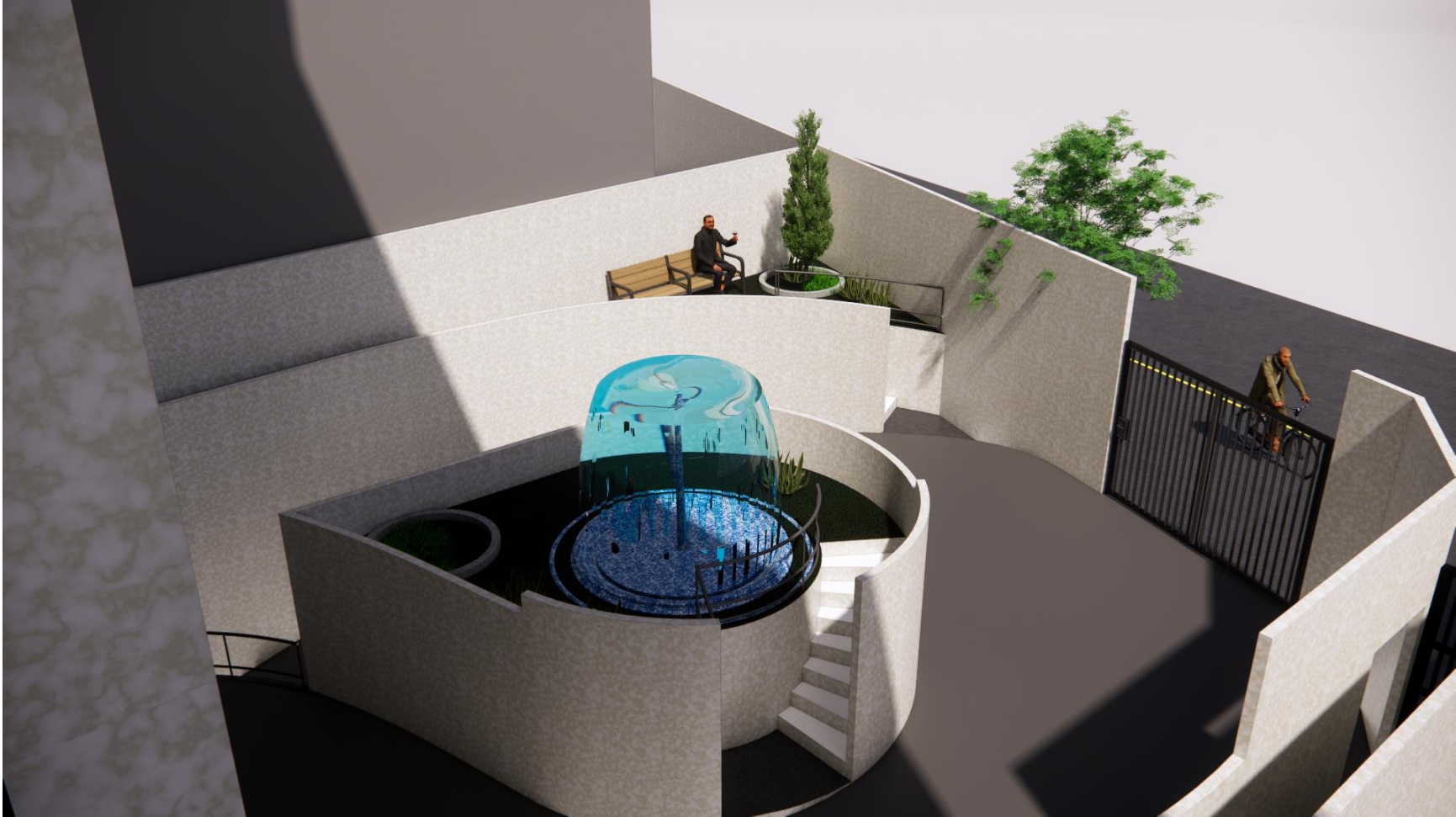
Perspectives

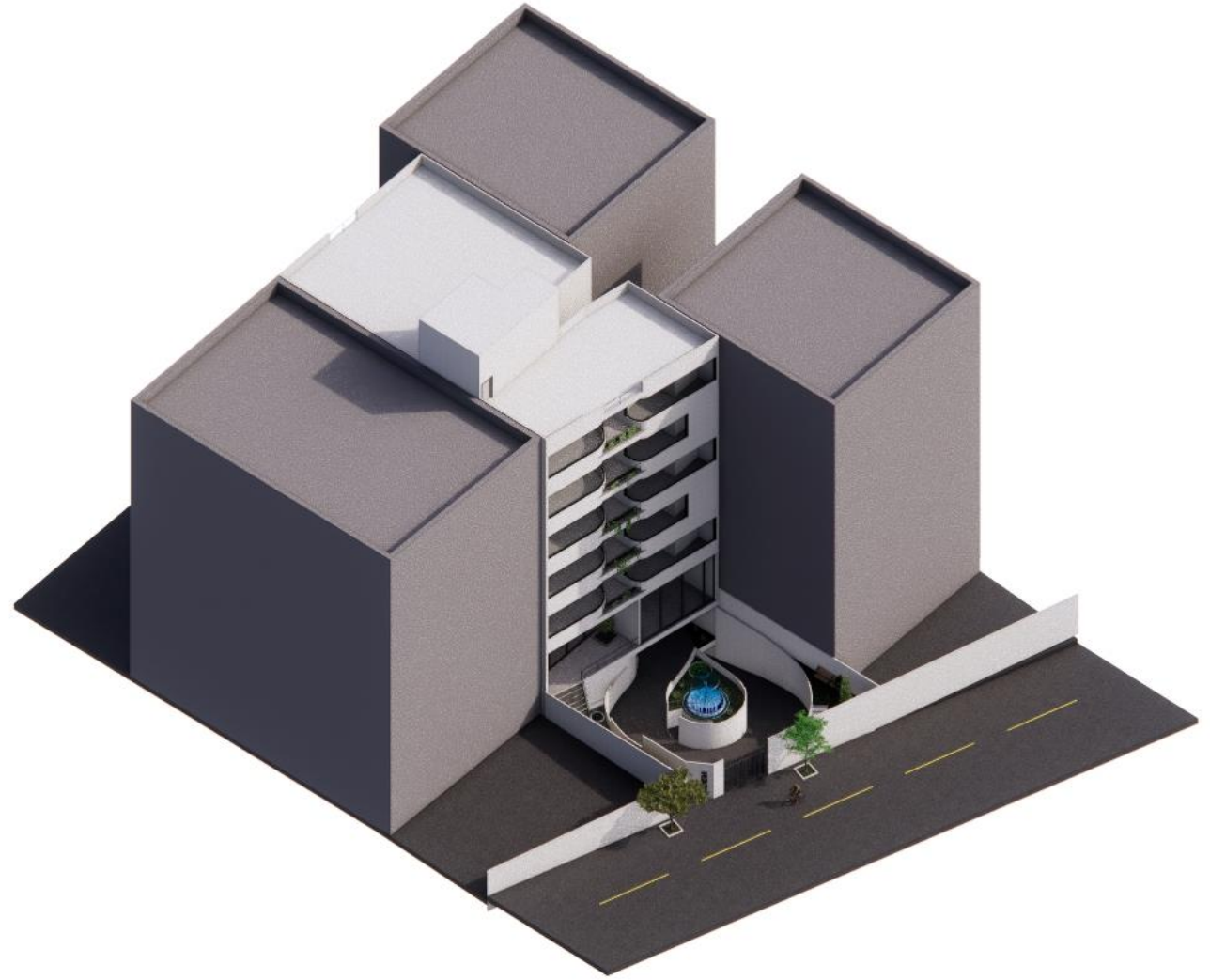


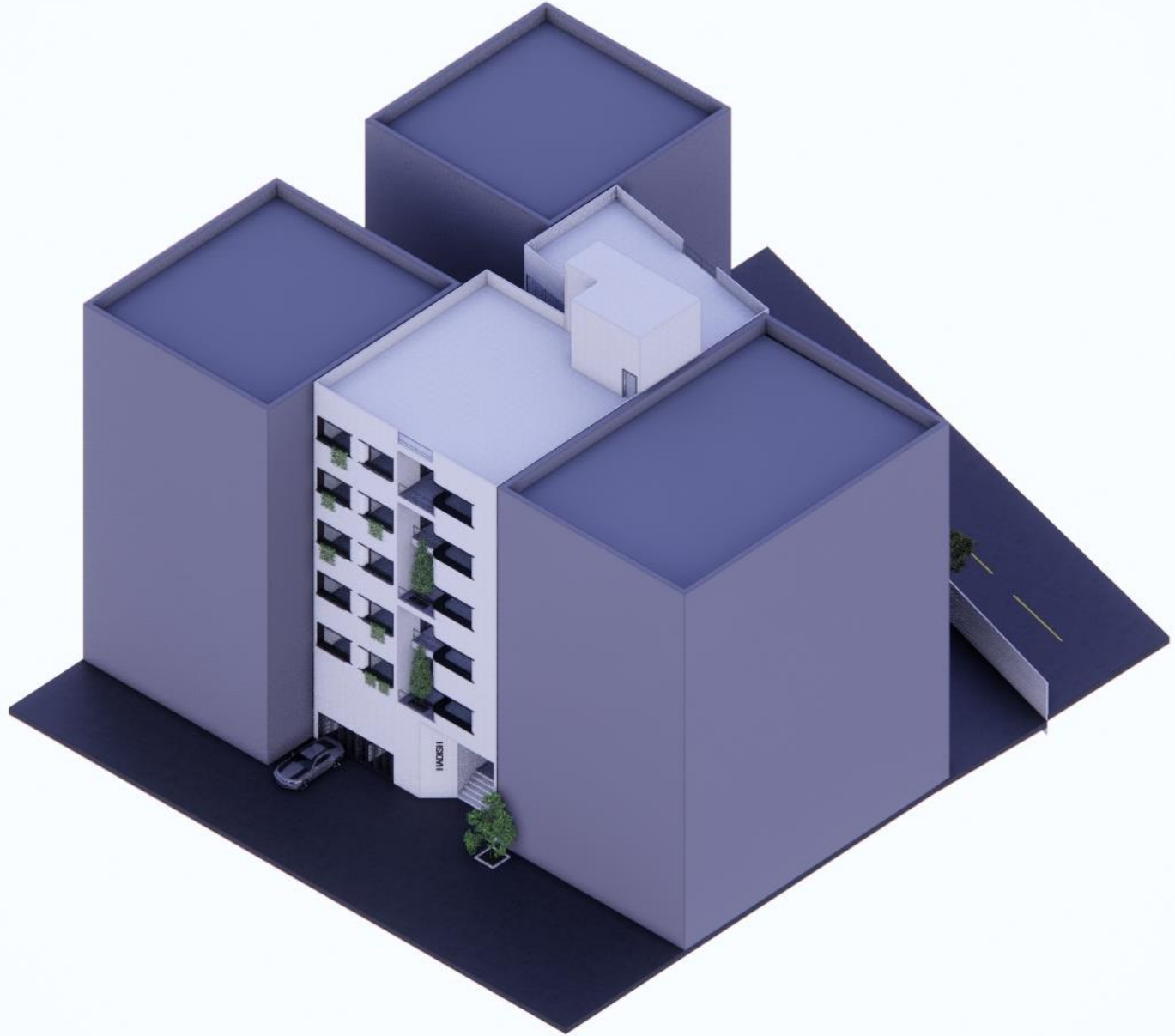
Perspectives



Perspectives







Perspectives



Perspectives



Perspectives



Perspectives



Thank you for your attention!