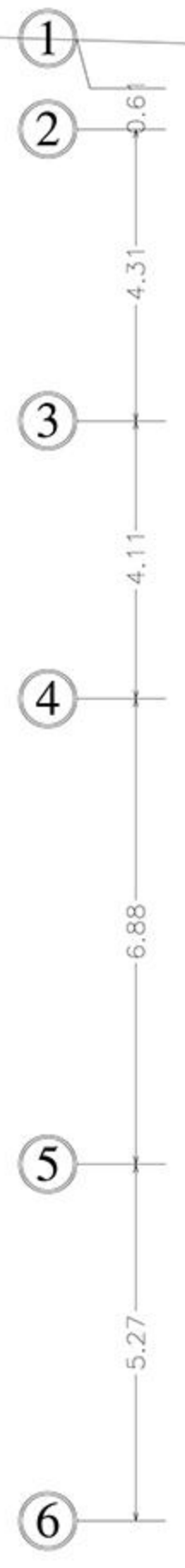
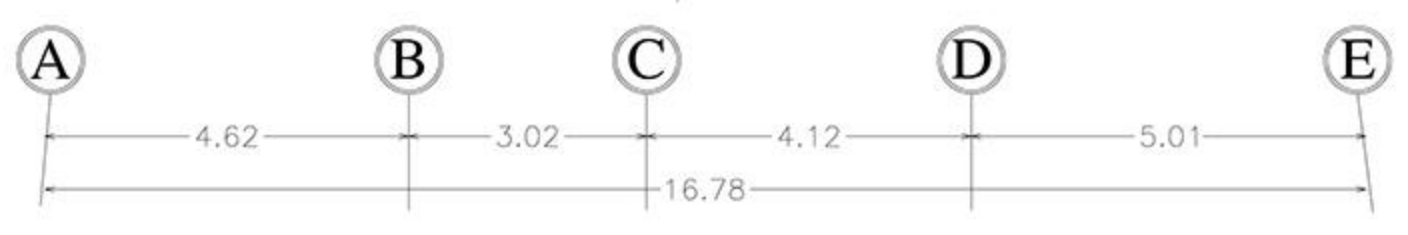




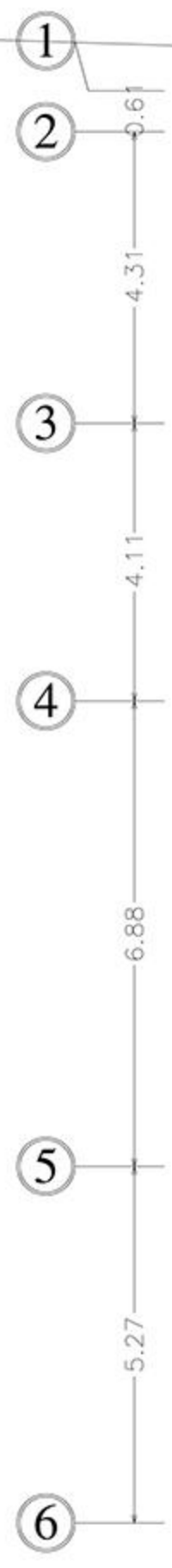
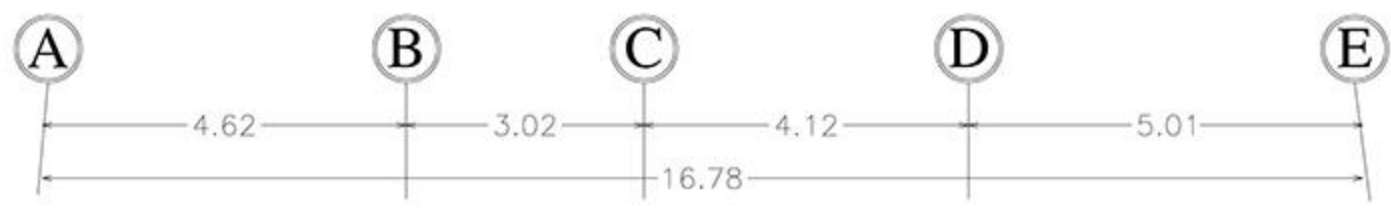
+7.40



-  **PARKING**  
Car Parking No. 14 Units
-  **STORAGE**  
Storage No. 15 Units



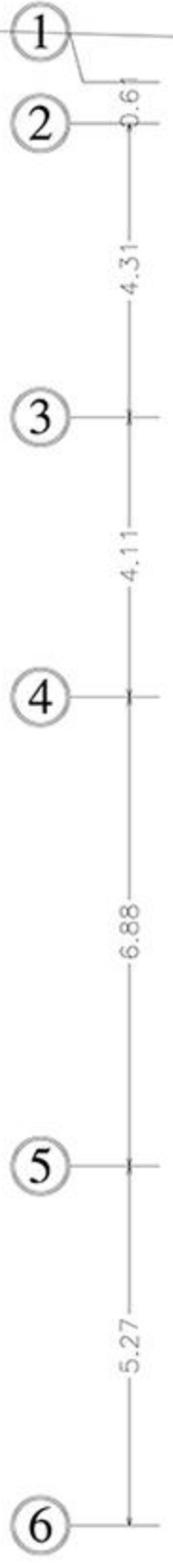
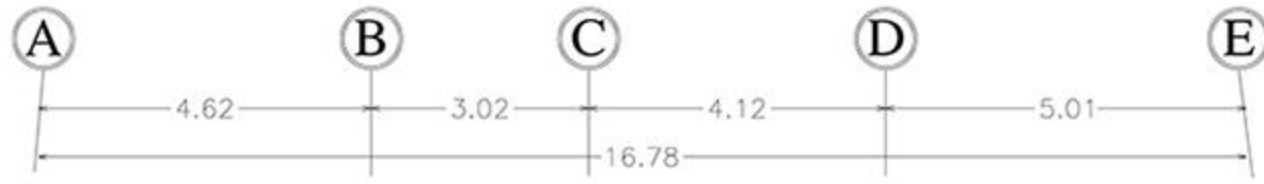
+7.40



- |  |   |  |   |
|--|---|--|---|
|  | <b>PARKING</b><br>Car Parking No. 9 Units |  | <b>SERVANT ROOM</b><br>Area: 40 m <sup>2</sup>    |
|  | <b>STORAGE</b><br>Storage No. 3 Units     |  | <b>MECHANICAL ROOM</b><br>Area: 55 m <sup>2</sup> |



+7.40



**PARKING**  
Car Parking No. 7 Units

**FANA KHOSRO PROJECT**  
**GROUND FLOOR PLAN**

SC. 1:100



+7.40

A B C D E  
4.62 3.02 4.12 5.01  
16.78

1  
2 0.61  
3 4.31  
4 4.11  
5 6.88  
6 5.27



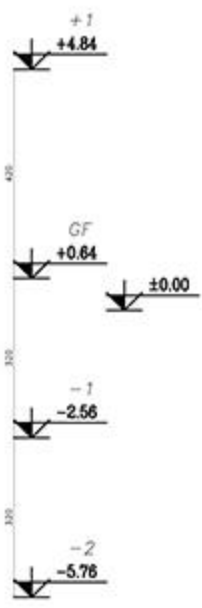
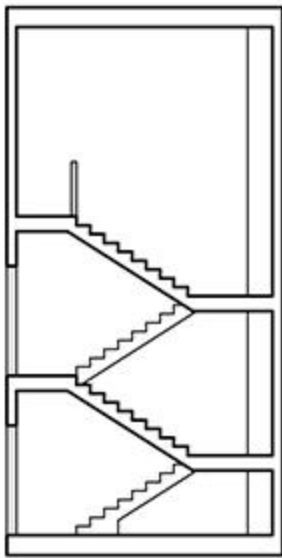
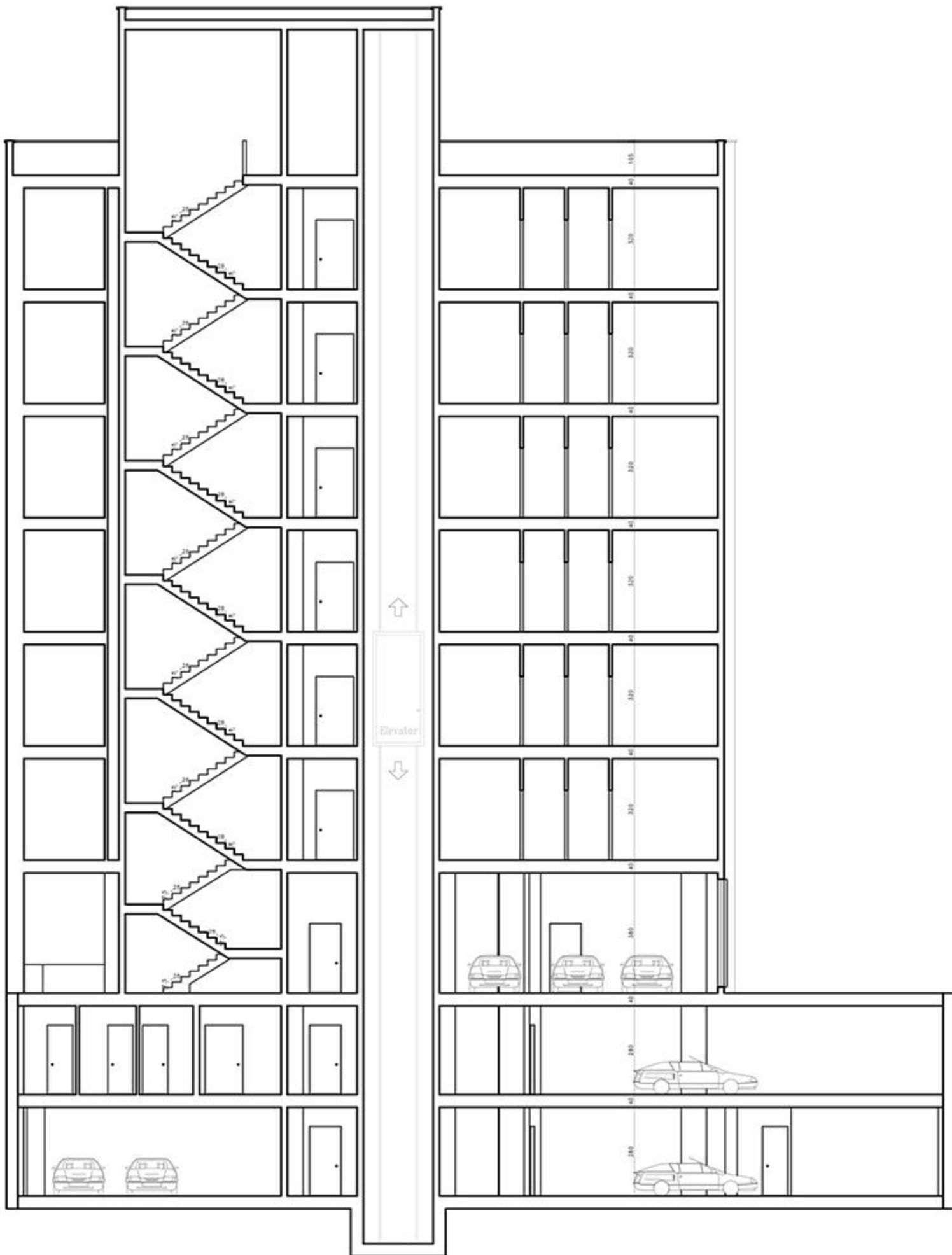
+22.84  
+19.24  
+15.64  
+12.04  
+8.44  
+4.84

-0.25 ±0.00 +0.25

-  NO. 1 UNIT 148.67 m<sup>2</sup>  
3 Bedrooms Apartment
-  NO. 2 UNIT 147.90 m<sup>2</sup>  
3 Bedrooms Apartment
-  NO. 3 UNIT 99.00 m<sup>2</sup>  
2 Bedrooms Apartment

TOTAL AREA = 395.57 m<sup>2</sup>

1 2 3 4 5 6  
 0.61 4.31 4.11 6.88 5.27



**SECTION A-A & B-B**

SC. 1:100