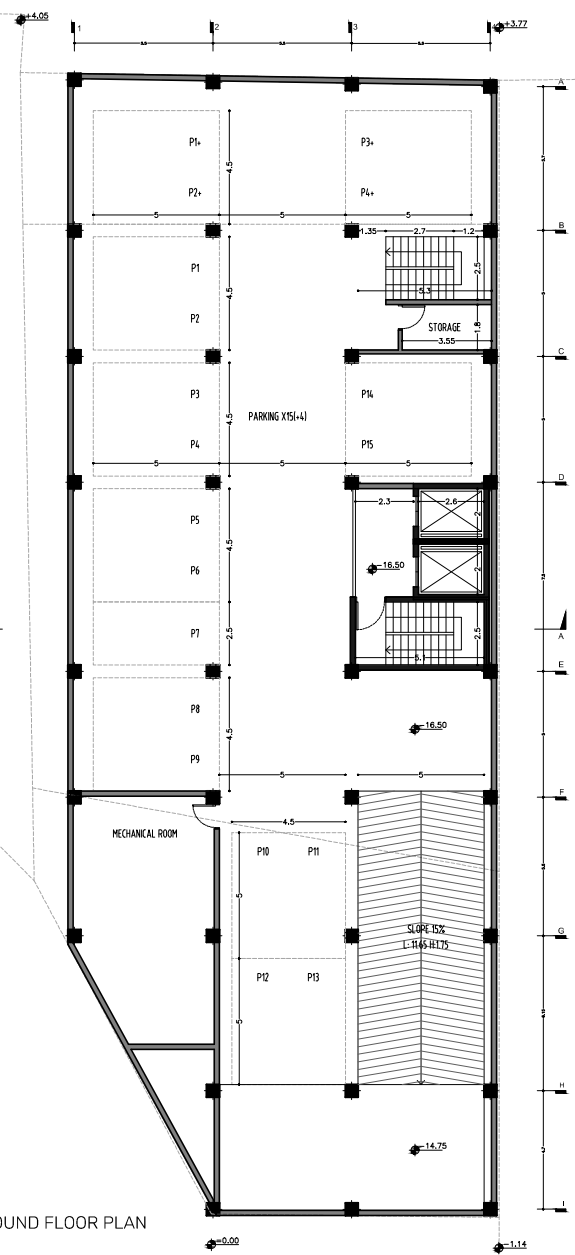


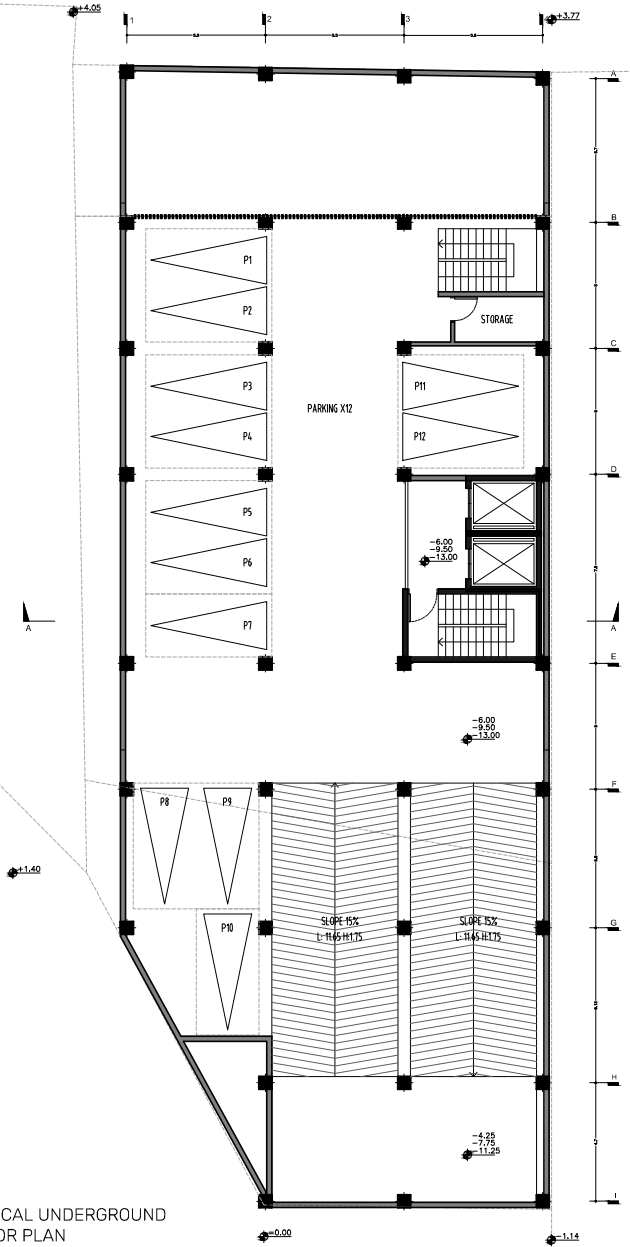
UNDERGROUND FLOOR PLAN
LEVEL -5

PARKING IN LEVEL -5 = 15 (+4)
SUM IN ALL LEVELS = 60 (+4)

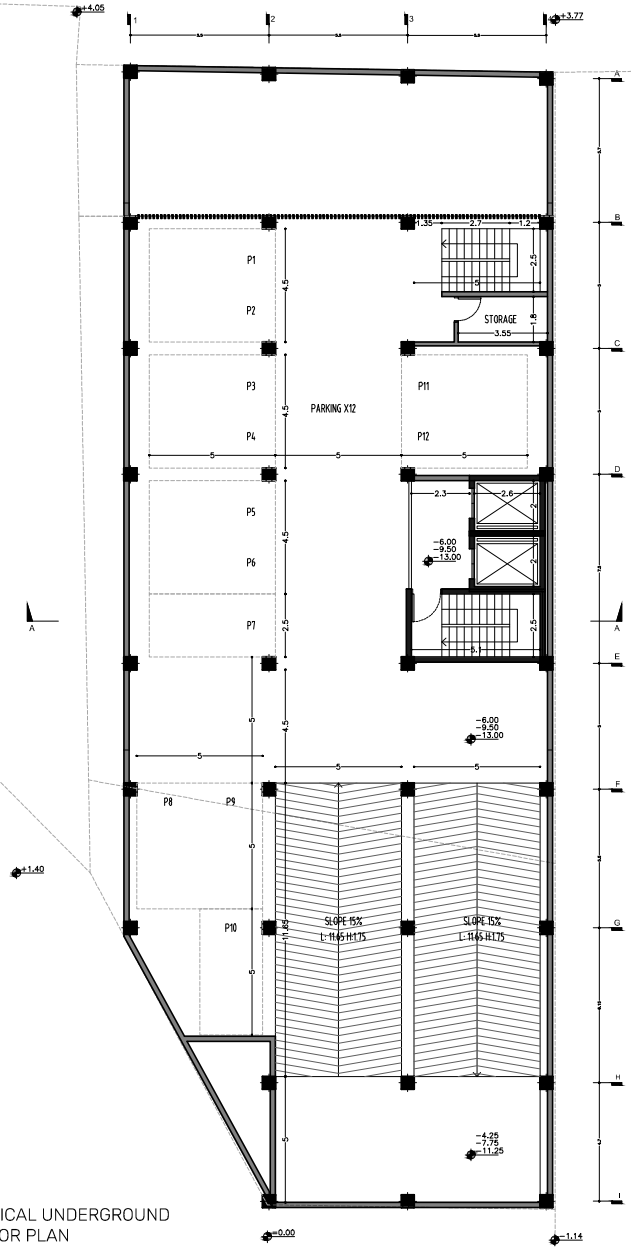


UNDERGROUND FLOOR PLAN
LEVEL -5

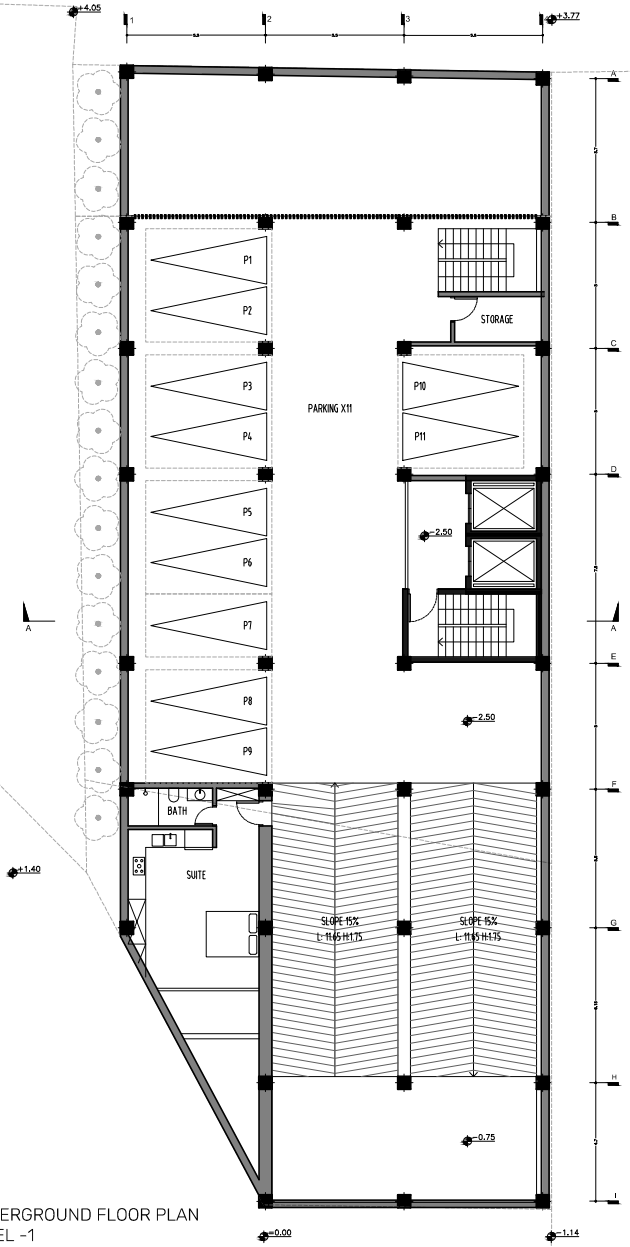
PARKING IN LEVEL -5 = 15 (+4)
SUM IN ALL LEVELS = 60 (+4)



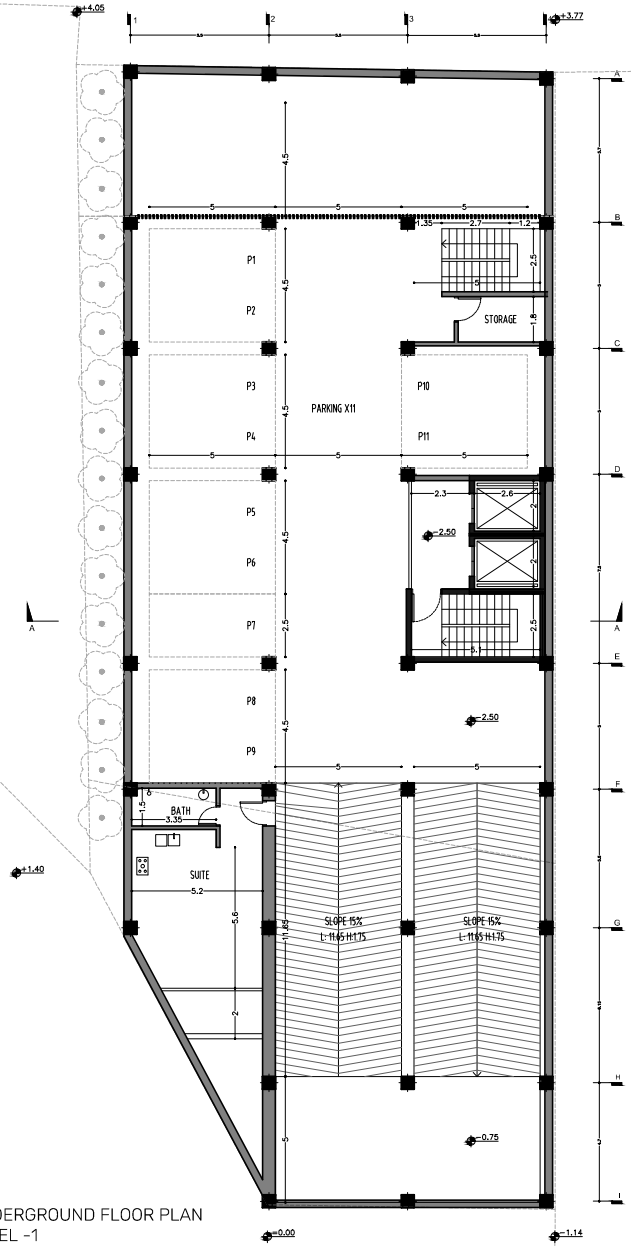
TYPICAL UNDERGROUND
FLOOR PLAN
LEVEL -2, -3, -4
PARKING IN LEVELS -2, -3, -4 = 36
SUM IN ALL LEVELS = 60 (44)



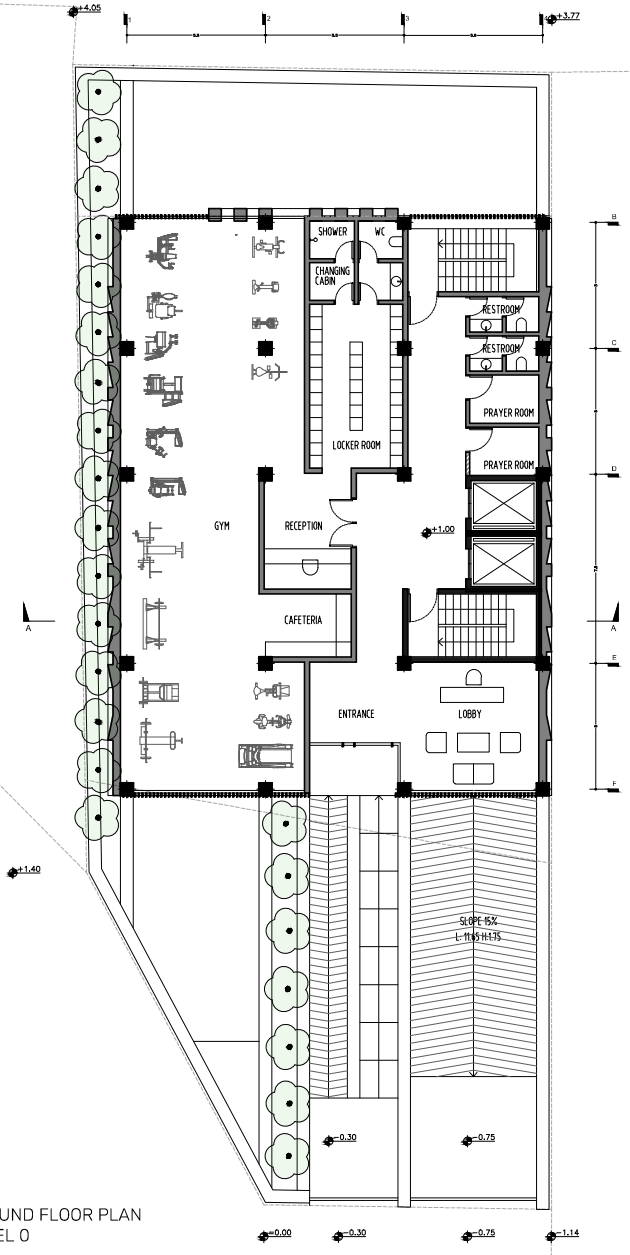
TYPICAL UNDERGROUND
FLOOR PLAN
LEVEL -2, -3, -4
PARKING IN LEVELS -2, -3, -4 = 36
SUM IN ALL LEVELS = 60 (44)



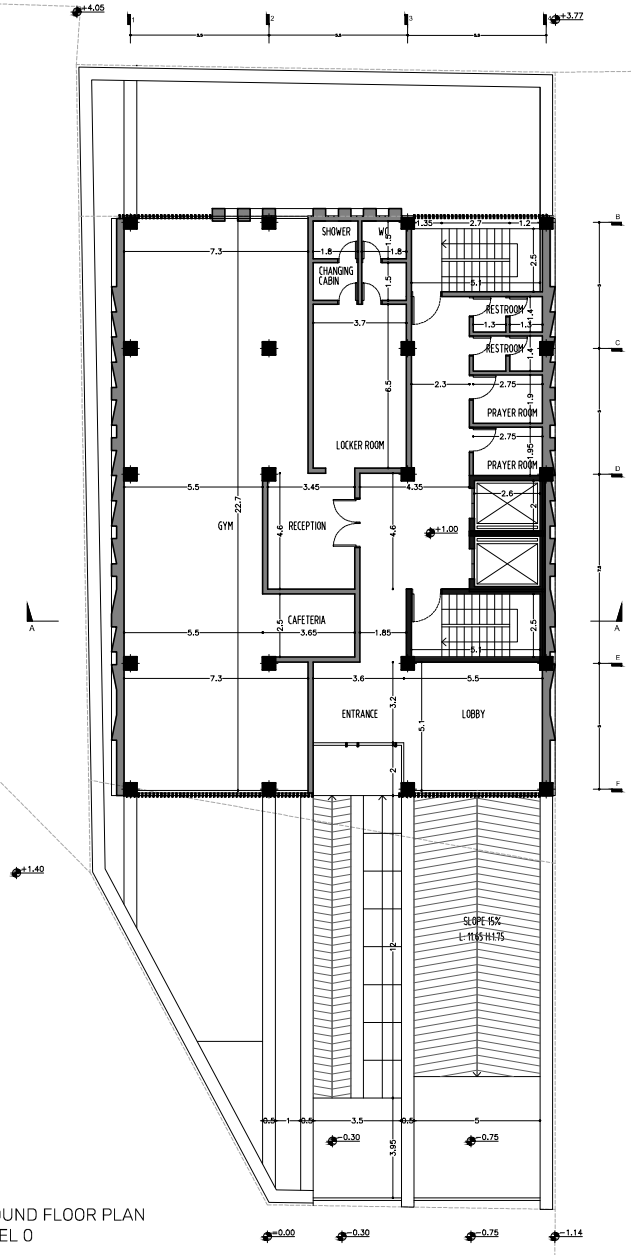
UNDERGROUND FLOOR PLAN
LEVEL -1
PARKING IN LEVEL -1 = 11
SUM IN ALL LEVELS = 60 (1+4)



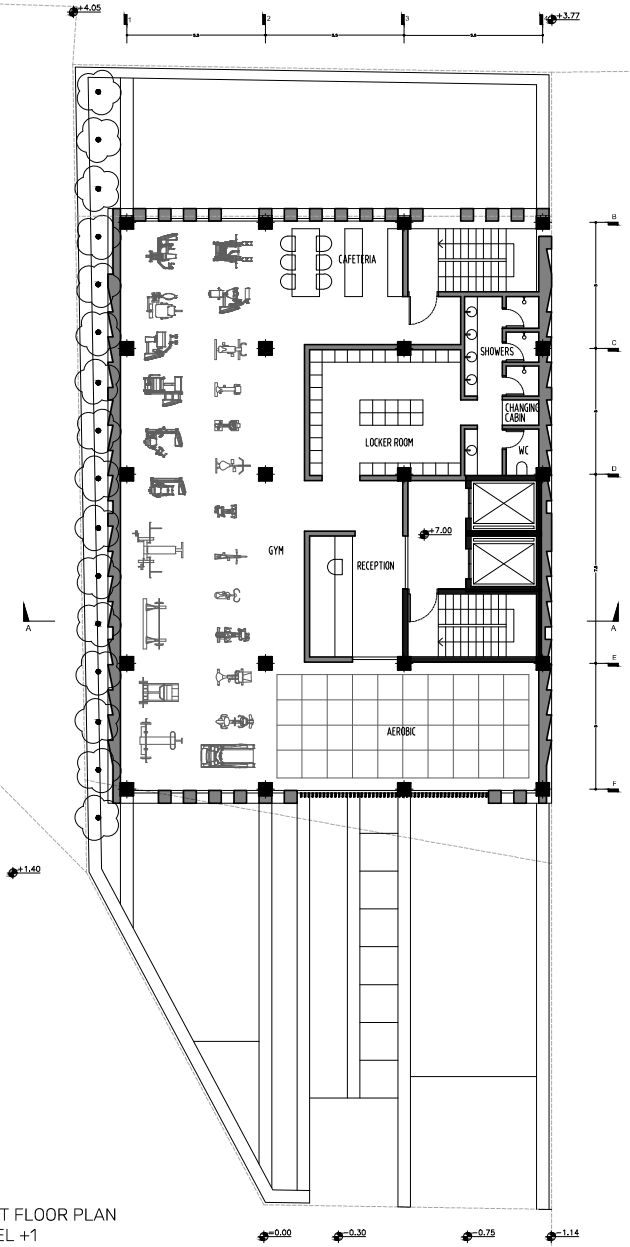
UNDERGROUND FLOOR PLAN
LEVEL -1
PARKING IN LEVEL -1 = 11
SUM IN ALL LEVELS = 60 (1+4)



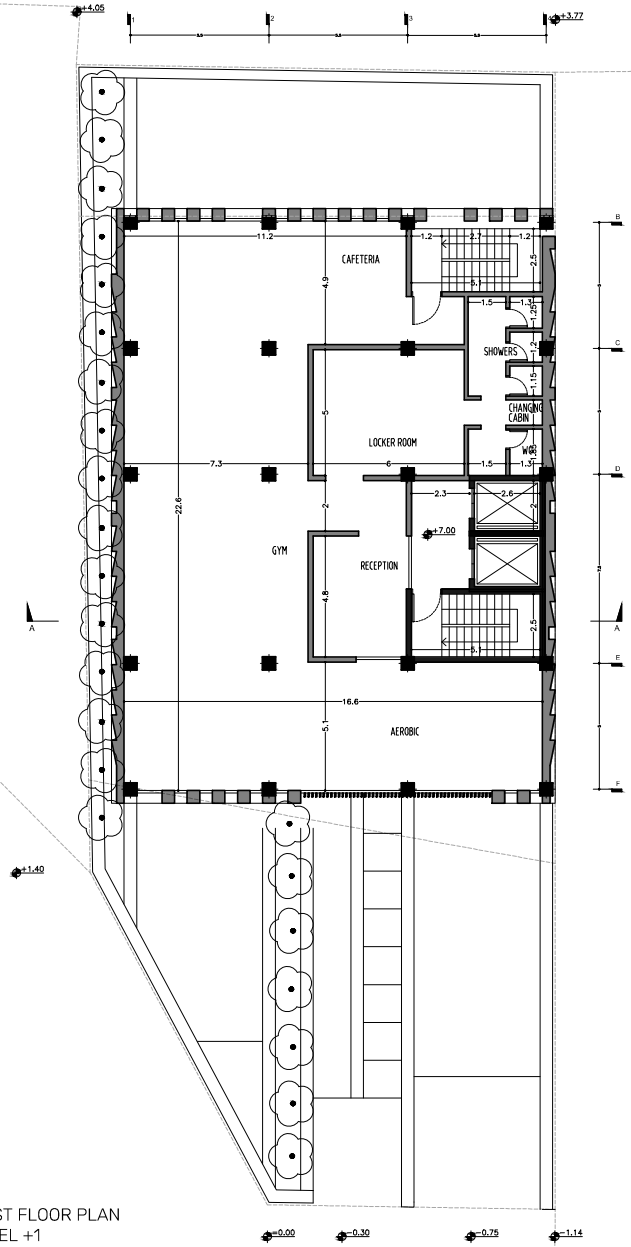
GROUND FLOOR PLAN
LEVEL 0



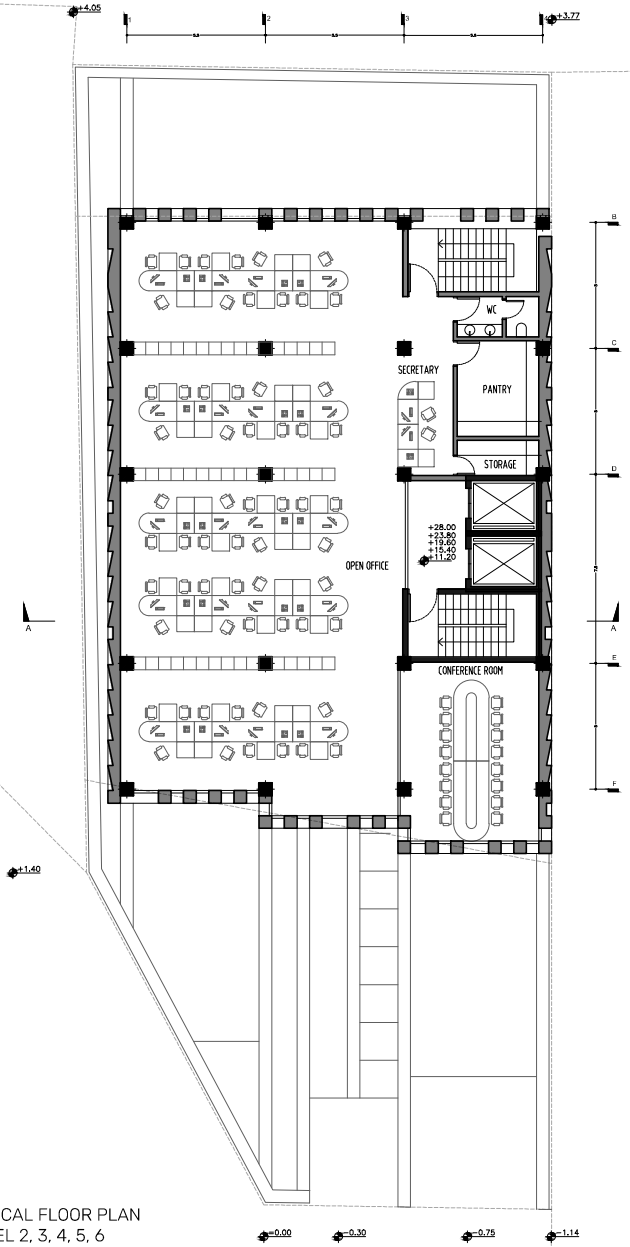
GROUND FLOOR PLAN
LEVEL 0



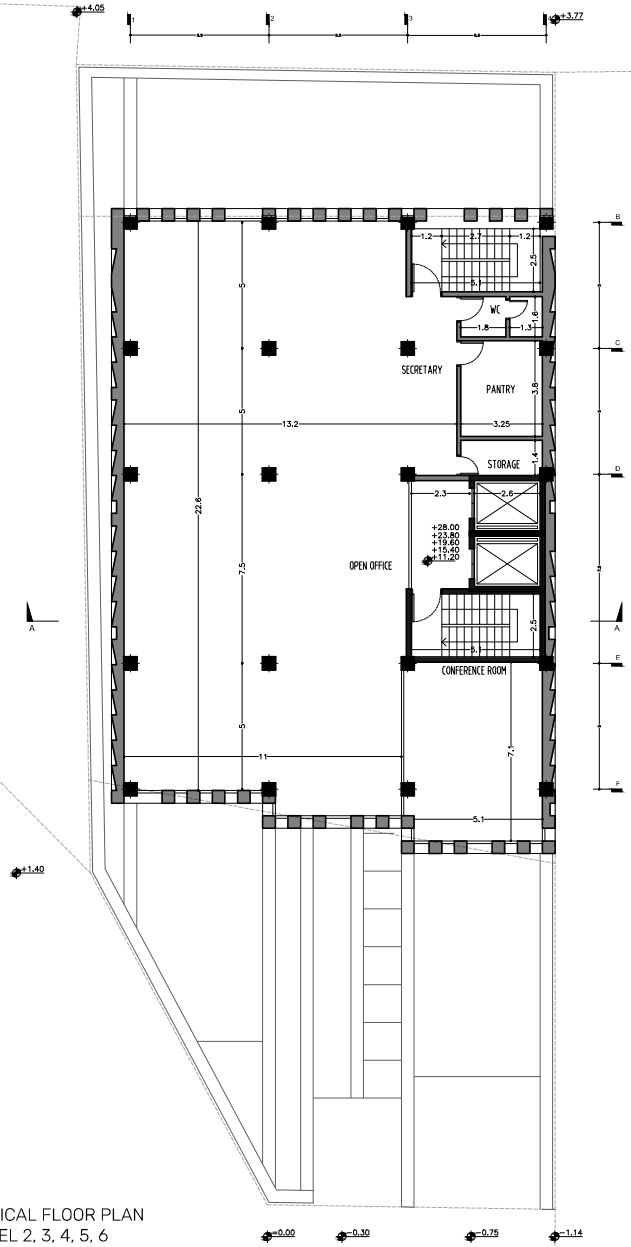
FIRST FLOOR PLAN
LEVEL +1



FIRST FLOOR PLAN
LEVEL +1



TYPICAL FLOOR PLAN
LEVEL 2, 3, 4, 5, 6



TYPICAL FLOOR PLAN
LEVEL 2, 3, 4, 5, 6