

Farmaniye Office

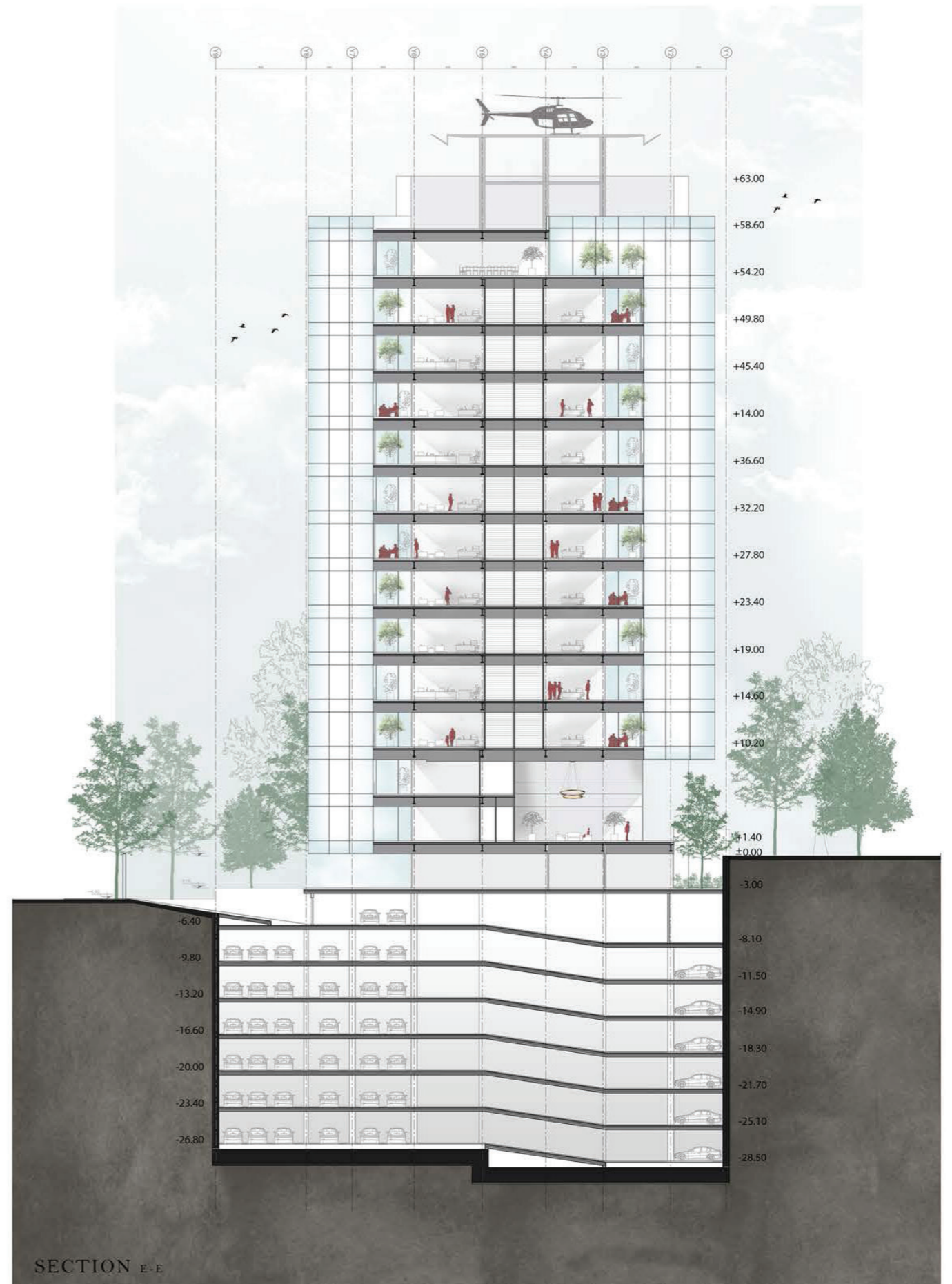
The building is a blend of contrasting forms, featuring a prominent large black solid box made primarily of glass, which serves as the main volume of the office space. This element symbolizes strength and modernity, while maximizing natural light and views.

The use of glass for the black box not only creates a sleek aesthetic but also allows for transparency and visual connection with the surrounding environment. The contrasting cubic boxes, likely constructed from materials such as concrete or metal, create dynamic visual interest and add complexity to the structure.

The smaller cubic volumes that appear to “move” in relation to each other can represent modular design principles, emphasizing flexibility and innovation in workspace configurations. This design can facilitate collaboration and interaction among occupants.

The layout may incorporate a variety of office spaces, meeting rooms, and communal areas, promoting an open and collaborative work environment. The juxtaposition of the solid black box with the modular cubes enhances spatial dynamism





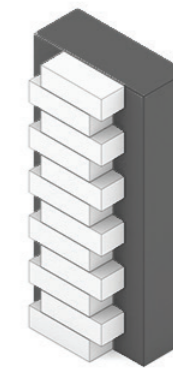
SECTION E-E



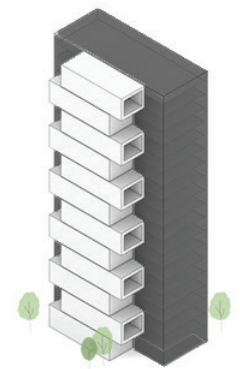
O1



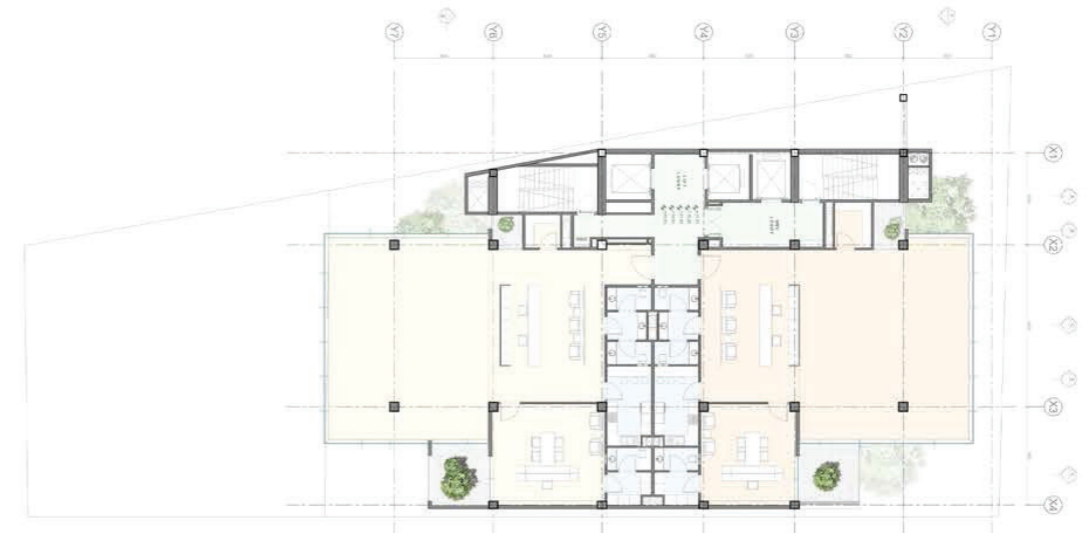
O2



O3



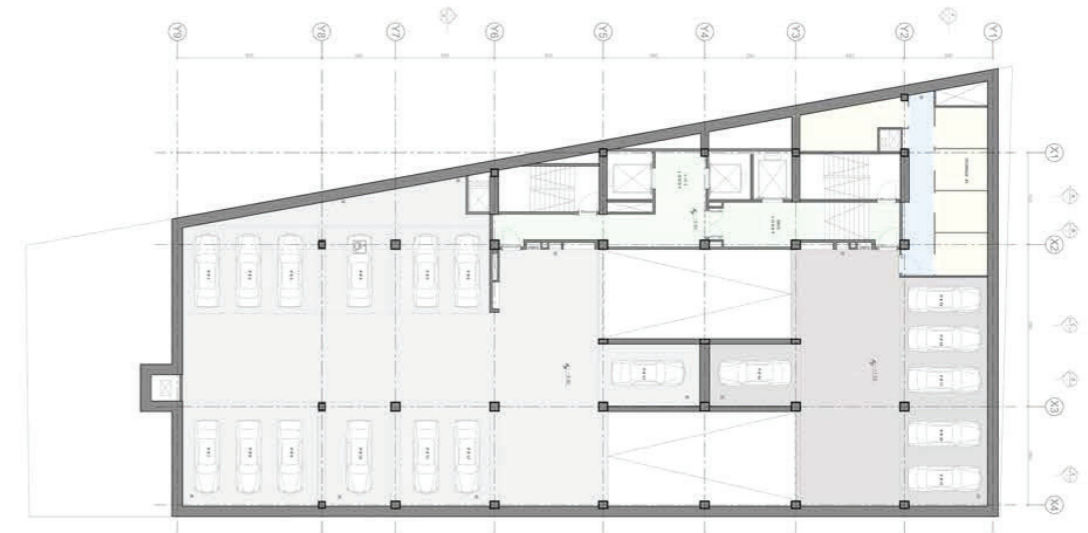
O4



Office Typical Plan



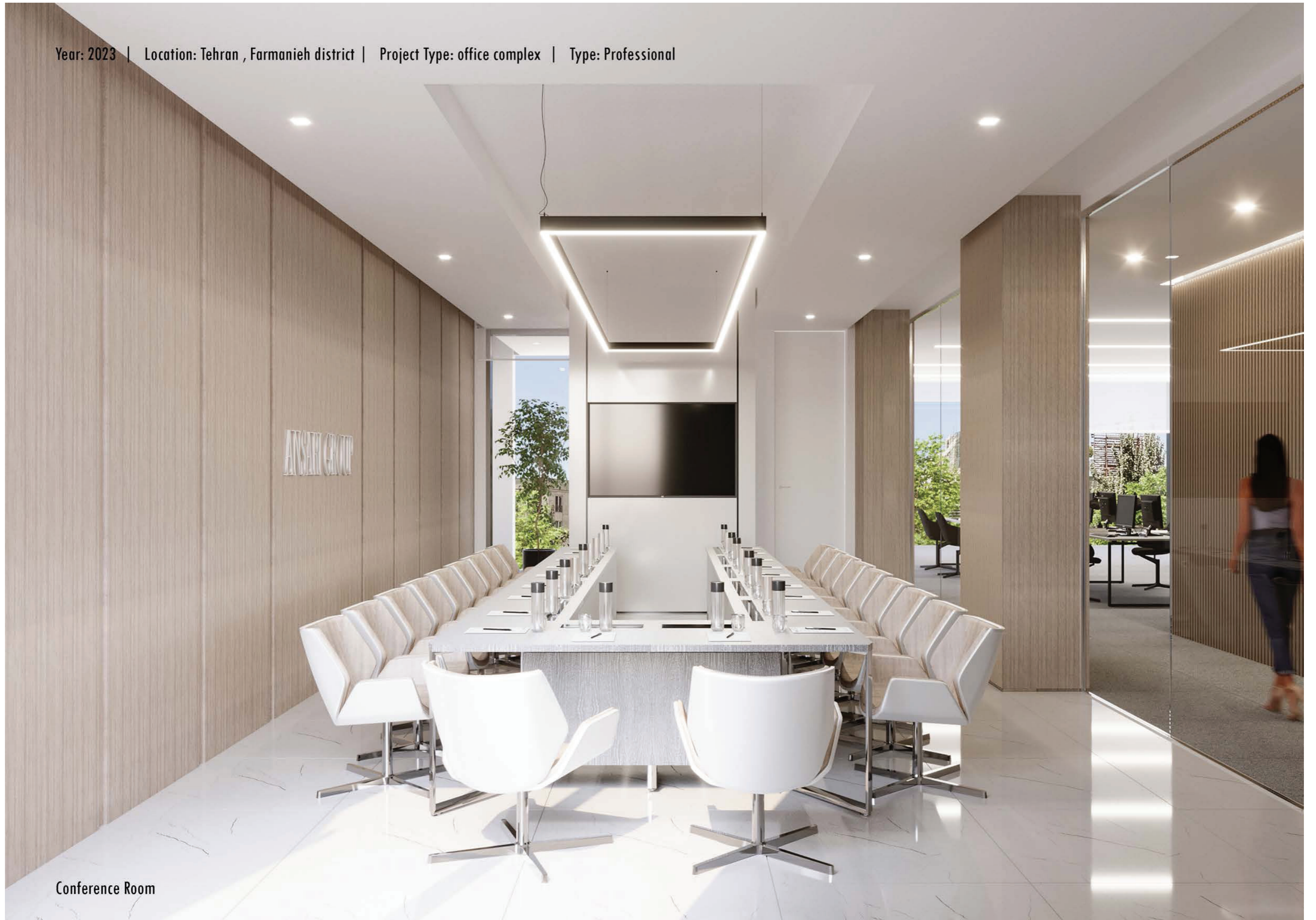
Ground Floor Plan



Parking Typical Plan







Conference Room