



Valiasr Street : 550m



Kordestani Highway : 1600m



Station BRT : 450m



Mirza Shirazi Metro Station : 900m



Kosar Hospital : 100m



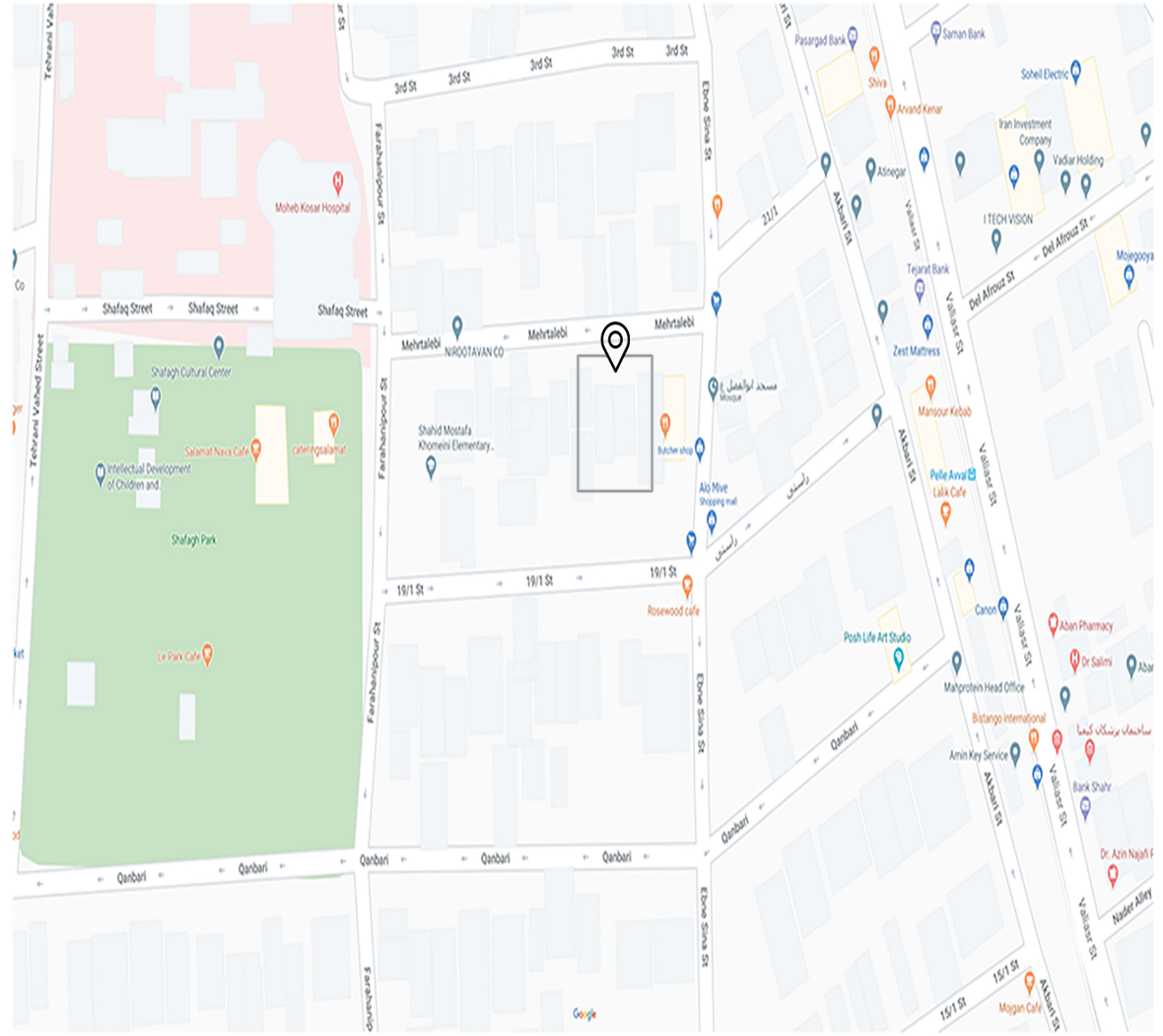
Cultural center Shafagh : 100m



Milad Tower : 800m



Imam Khomeini airport :5300m



# FLOOR PLANS

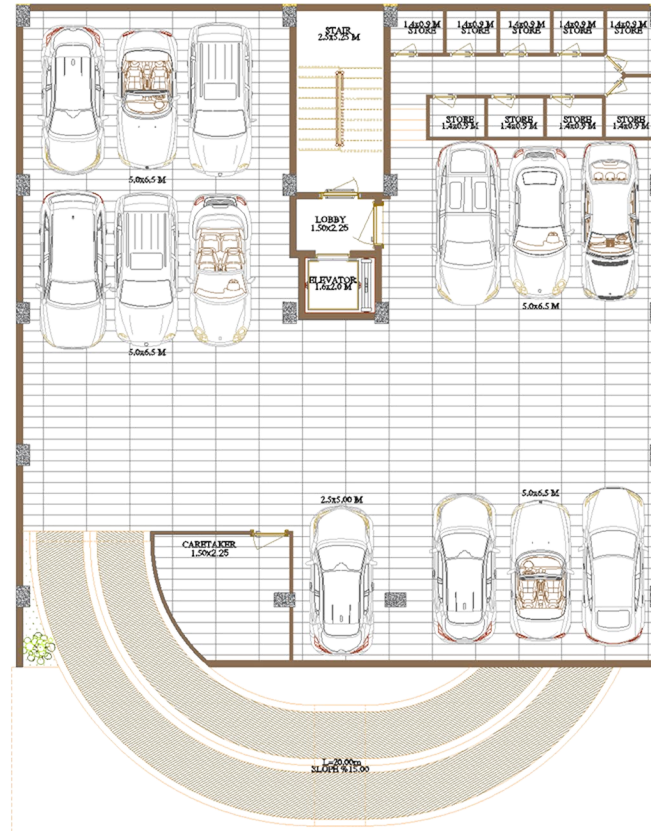
# THE PARADISE

-1 BASEMENT FLOOR

13 CARPARK

9 STORAGE

CARETAKER

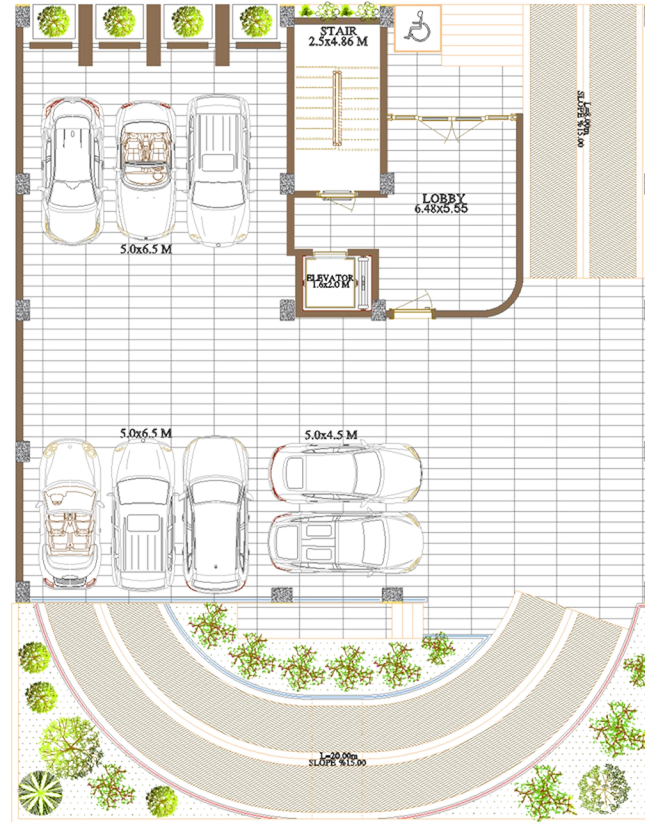


# THE PARADISE

GROUND FLOOR

8 CARPARK

LOBBY AREA 30.15 SQ.M.



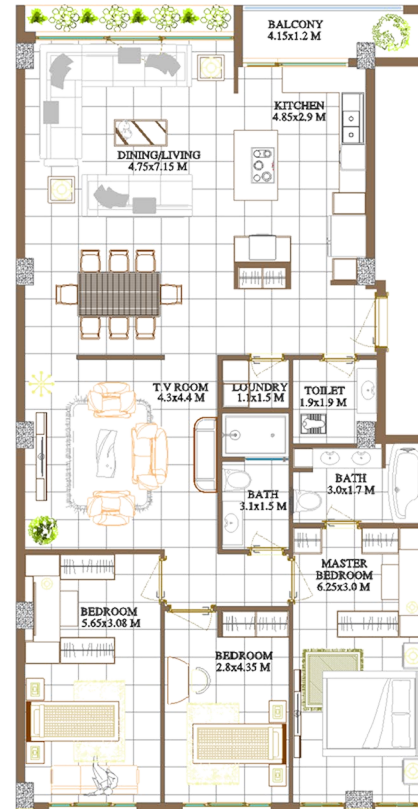
# THE PARADISE

TYPICAL FLOOR

3 BEDROOM

WESTERN UNIT

SUITE AREA	156.17	SQ.M.
BALCONY AREA	5.91	SQ.M.
TOTAL AREA	162.08	SQ.M.



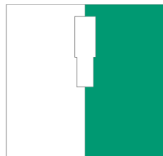
# THE PARADISE

TYPICAL FLOOR

3 BEDROOM

EASTERN UNIT

SUITE AREA	156.17	SQ.M.
BALCONY AREA	5.91	SQ.M.
TOTAL AREA	162.08	SQ.M.



# THE PARADISE

TYPICAL FLOOR

2 UNIT | 3 BEDROOM

2 UNIT

SUITE AREA	312.34	SQ.M.
BALCONY AREA	11.82	SQ.M.
TOTAL AREA	324.16	SQ.M.

