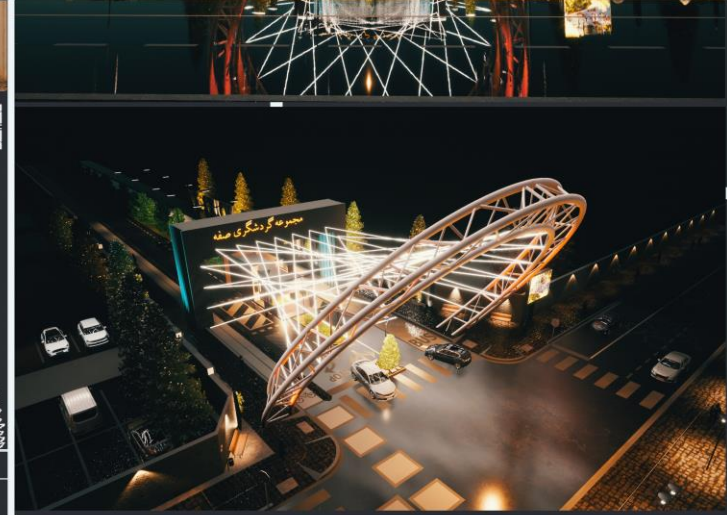
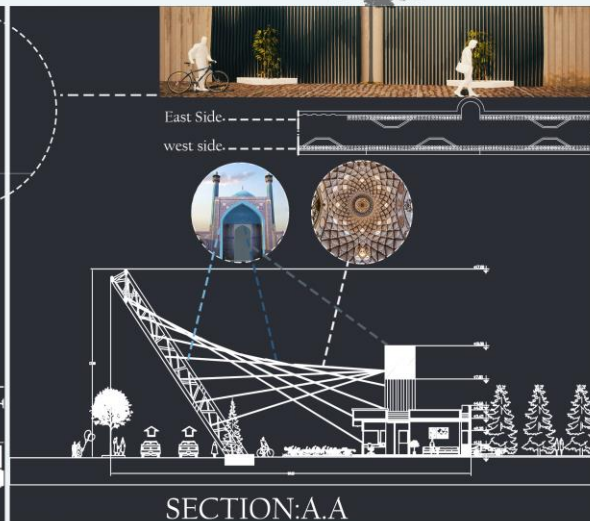
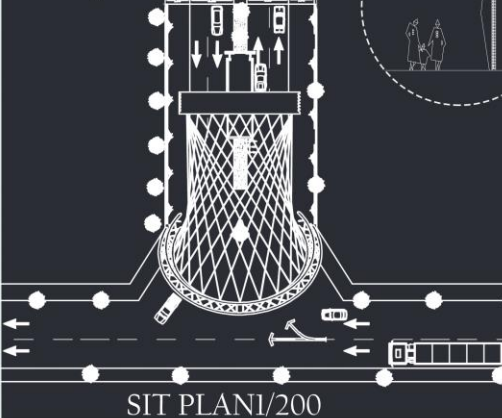


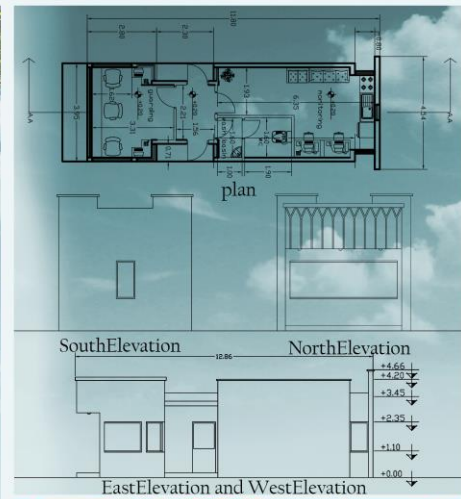
Sofhe tourism complex



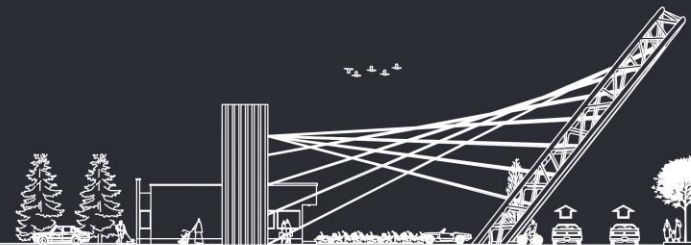
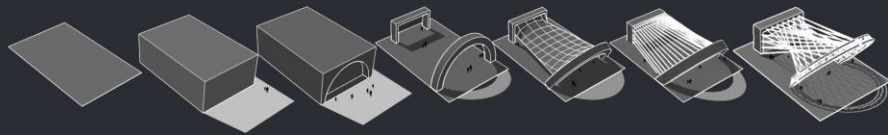
In the above design, the elements of Islamic Iranian architecture such as arches, niches, porches, carbandi, moqrans, as well as the design of neutral colors are used, so that by creating a space between the two main elements at the beginning and end of the entrance, a dynamic and active space is created. It is created using metal cables.



Sofhe tourism complex



According to its nature, the tourism complex should become a well-known and legible symbol. Therefore, entrance doors with large and different dimensions. Construction techniques can add visual impact to this design, be attractive and make it appear as a recognized element.



East Elevation and West Elevation



North Elevation



South Elevation